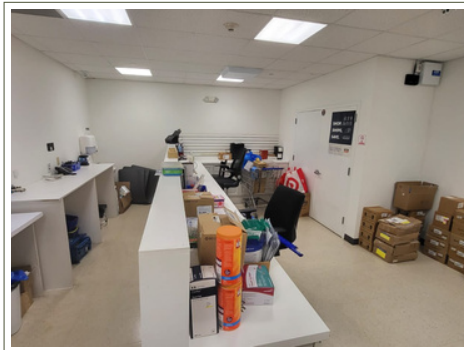


STARTING FROM  
**\$3,000**

**FOR  
RENT**

838 E GRAND ST.  
ELIZABETH, NJ 07201



## FEATURES:

- Retail Business inside the Extra Supermarket in Elizabeth
- Utilities & taxes included
- Abundant parking
- High foot traffic generated by the supermarket.
- Perfect for a pharmacy, optical, nail or hair salon, phone company, etc



**GISELLE ORTEGA**

realestate.giselle@gmail.com  
(786) 720-6237

**REALESTATEGISELLE.KW.COM**