

\*ALL PROPERTY LINES ARE ROUGH ESTIMATIONS  
AND NOT SURVEY ACCURATE

PARCEL  
"A"

PARCEL  
"B"

**FOR SALE**

**REGION**

COMMERCIAL REAL ESTATE

## INTERSTATE PARCEL B WEST SPRINGFIELD, MA

Region Commercial is pleased to offer, on an exclusive basis, Interstate Parcel B, a  $\pm 8.50$ -acre parcel available for sale.

The land is ideally located at the crossroads of Interstate I-90 and I-91, offering accessibility and visibility. This location provides easy regional connectivity and convenient transportation access. Its strategic position enhances development potential and long-term value.

The parcel offers flexible development potential in a well-positioned location, suitable for a range of uses. Built-to-suit opportunities are available.

PRICE **\$200,000/AC**

ZONING INDUSTRIAL PARK

ACRES  $\pm 8.50$  ACRES

TOPOGRAPHY SLOPED TERRAIN

ELECTRIC/GAS EVERSOURCE ENERGY

WATER/SEWER MUNICIPAL

## CONTACT

### MITCH BOLOTIN

P: 413-415-1200 C: 413-537-2020

E: MITCH@REGIONCO.COM

LIC (MA): 134459

REGION CO LLC

### BEN BOLOTIN

P: 413-415-1200 C: 413-530-3215

E: BEN@REGIONCO.COM

LIC (MA): 9582125

REGION CO LLC



# REGION

COMMERCIAL REAL ESTATE

THE INFORMATION CONTAINED HEREIN HAS NOT BEEN VERIFIED AND IS FROM THIRD PARTY SOURCES. ALL INDIVIDUALS CONSIDERING THE SUBJECT PARTY MUST CONDUCT THEIR OWN ANALYSIS AND DETERMINE THE ACCURACY OF THE INFORMATION PROVIDED.

## CONTACT

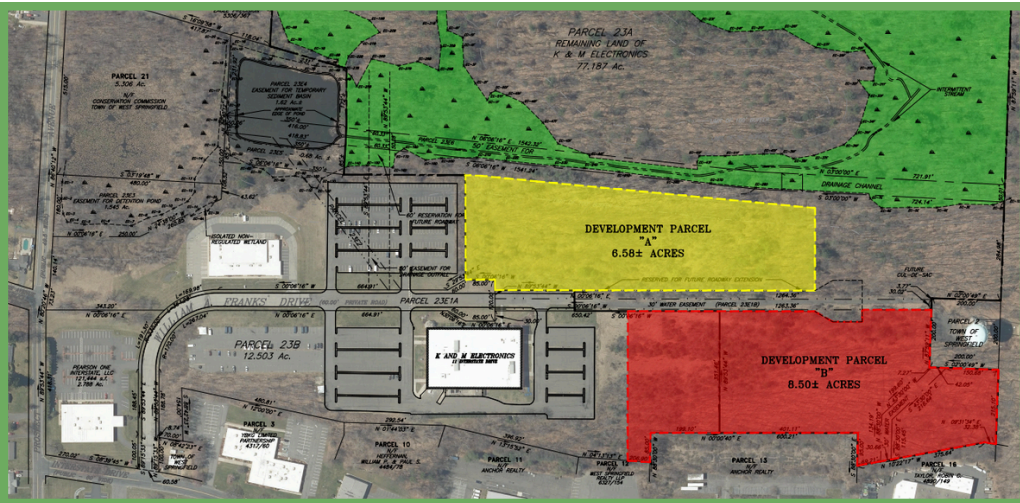
### MITCH BOLOTIN

P: 413-415-1200 C: 413-537-2020  
E: MITCH@REGIONCO.COM  
LIC (MA): 134459  
REGION CO LLC

### BEN BOLOTIN

P: 413-415-1200 C: 413-530-3215  
E: BEN@REGIONCO.COM  
LIC (MA): 9582125  
REGION CO LLC





# REGION

COMMERCIAL REAL ESTATE

THE INFORMATION CONTAINED HEREIN HAS NOT BEEN VERIFIED AND IS FROM THIRD PARTY SOURCES. ALL INDIVIDUALS CONSIDERING THE SUBJECT PARTY MUST CONDUCT THEIR OWN ANALYSIS AND DETERMINE THE ACCURACY OF THE INFORMATION PROVIDED.

## CONTACT

### MITCH BOLOTIN

P: 413-415-1200 C: 413-537-2020  
E: MITCH@REGIONCO.COM  
LIC (MA): 134459  
REGION CO LLC

### BEN BOLOTIN

P: 413-415-1200 C: 413-530-3215  
E: BEN@REGIONCO.COM  
LIC (MA): 9582125  
REGION CO LLC