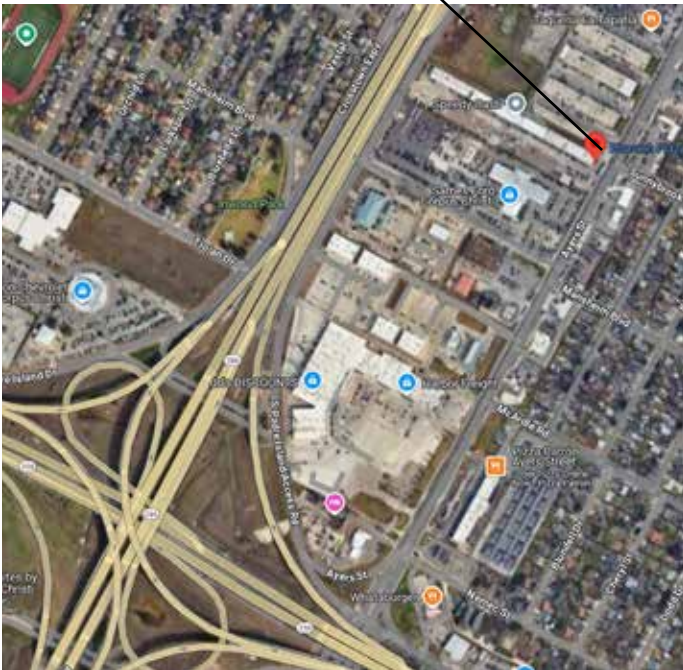




**FOR
LEASE**

Pharaoh Plaza Shopping Center
4701 Ayers Street, Corpus Christi, TX 78415
2,500 sq foot office currently set up as a Church



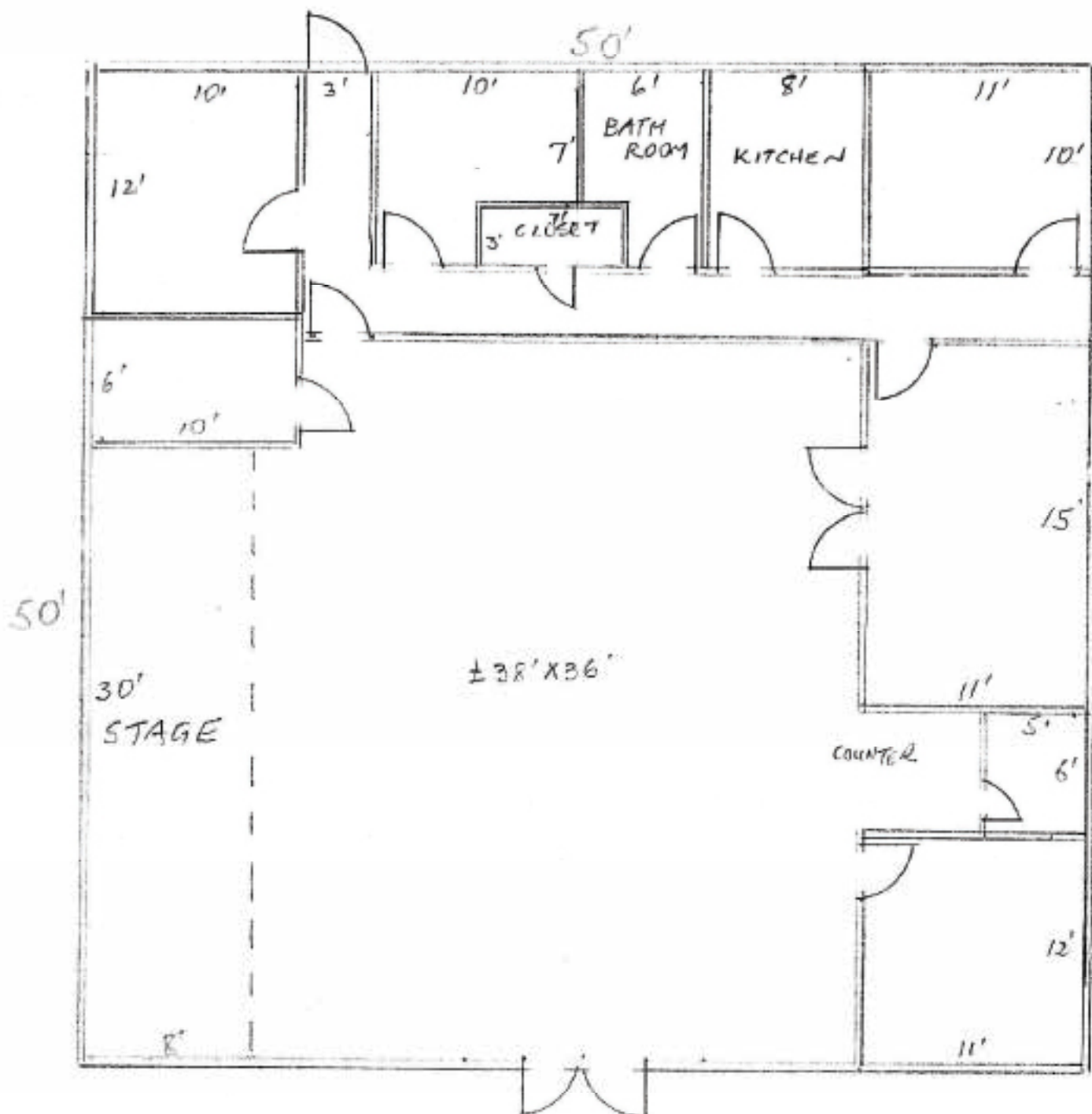
Jack and Ben Super
 SuperTex Properties L.P.
 Super Commercial Properties
 4531 Ayers Street, Suite 201, Corpus Christi, TX 78415
 (361) 853-3003 Fax: (361) 853-9141 cell: (361) 215-8018



SuperTex Properties
4531 Ayers, Suite 201
Corpus Christi, Texas 78415
Phone (361) 853-3003 Fax: (361) 853-9141
zjsuper@gmail.com

Pharaoh Plaza Shopping Center
4701 Ayers Street, Corpus Christi TX 78415
2,500 Square Feet For Lease

- Location:** Pharaoh Plaza is located between Ayers Street and the Crosstown Expressway just north of the SPID freeway. It has entrances from both Ayers Street and the Crosstown Expressway access road.
- Description:** Pharaoh Plaza is a 47,000 square feet shopping center with 29 rental suites including a freestanding drive thru convenience store.
- Acreage:** Situated on 5 acres
- Parking:** There are 283 parking spaces
- Suite Description:** All suites are 50 feet deep.
Frontages vary from 20 to 40 feet and are all glass.
- Lease Rate:** \$1.00 per square foot per month modified gross
No CAM's
Each suite is individually metered for electricity.
Each Tenant pays for its own power.
Landlord pays water and supplies dumpsters.
- Now Available:** Former Church
Suite 600
2,500 sq ft
\$2,500 per month
- Broker Coop:** Encouraged
- Corpus Christi:** Corpus Christi, Texas is a desirable place to live due to its beautiful beaches, subtropical climate, affordable cost of living, and rich cultural heritage. The city's location on the Gulf of America provides ample opportunities for water sports, swimming, and enjoying fresh seafood. Catering to diverse interests, Corpus Christi, offers a variety of attractions, including the Texas State Aquarium, the USS Lexington Museum and the Selena museum.











Pharaoh Plaza Shopping Center

4701 Ayers Street, Corpus Christi, TX 78415

