

FOR SUBLEASE

PLAZA 192ND CLASS A MEDICAL CLINIC

2115 SE 192nd Ave | Camas, WA 98607



COMMERCIAL REAL ESTATE SERVICES

900 Washington St, Suite 850, Vancouver, WA
360.750.5595 | www.fg-cre.com



PROPERTY HIGHLIGHTS

- Class A, Fully built-out medical clinic directly on 192nd
- Nearby retail development includes 192nd Station, Candlewood Suites and Holiday Inn Express
- Surrounding major employers include Karcher, Sharp Electronics, Furuno USA, Columbia Tech Center, Banfield, Fisher Investments, and Hewlett Packard
- Fellow tenants include Tapped Brew House & Pub, State Farm, Allure Salon and Spa, Regus and more
- 2,852 RSF
- \$39.50/SF NNN
- Direct lease term ends June 30, 2027



FOR MORE INFORMATION:

Adam Roselli, CCIM, SIOR
360.597.0568 | aroselli@fg-cre.com

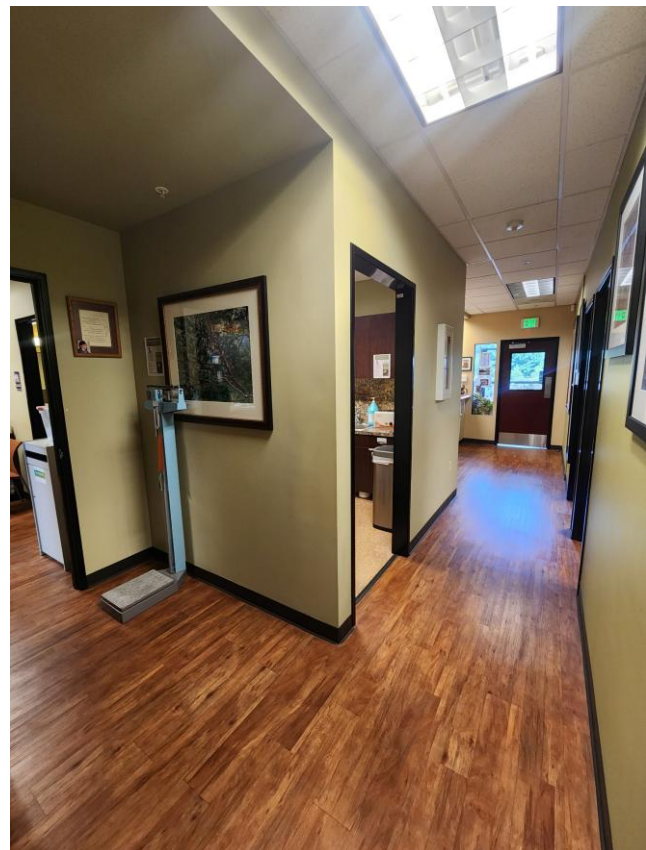
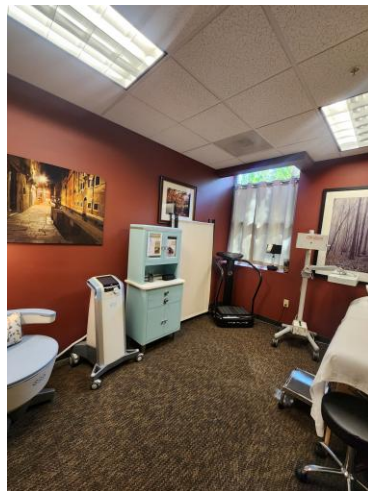
FOR SUBLEASE

PLAZA 192ND CLASS A MEDICAL CLINIC

2115 SE 192nd Ave | Camas, WA 98607



900 Washington St, Suite 850, Vancouver, WA
360.750.5595 | www.fg-cre.com



FOR SUBLEASE

PLAZA 192ND CLASS A MEDICAL CLINIC

2115 SE 192nd Ave | Camas, WA 98607



900 Washington St, Suite 850, Vancouver, WA
360.750.5595 | www.fg-cre.com



2024 DEMOGRAPHICS

	1 Mile	3 Mile	5 Mile
Est. Population	9,895	66,552	236,375
2029 Projected Population	10,996	71,366	245,905
Average Household Income	\$81,477	\$84,564	\$95,195
Total Employees	16,170	44,205	119,823

Average Daily Traffic

C St @ E 7th St S – 3,966

E 6th St @ Broadway St W – 4,235

E Evergreen Blvd @ Broadway St E – 6,246

This statement with the information it contains is given with the understanding that all the negotiations relating to the purchase, rental or leasing of the property described above shall be conducted through this office. The above information, while not guaranteed, has been secured from sources we believe to be reliable.