

Historic Downtown Littleton Restaurant For Sale

2589 W MAIN STREET
Littleton, CO 80120



Patrick Henry
Principal
Pat@henrygroupe.com
303.625.7444

Boston Weir
Principal
Boston@henrygroupe.com
303.327.9753

Montana Rae
Broker Associate
Montana@henrygroupe.com
970.618.6257

PROPERTY DESCRIPTION

Bring your exciting new food and beverage concept to the coveted Historic Downtown Littleton submarket! Built in 2011, this restaurant occupies a prime corner at West Main Street and Curtice Street, within Littleton's pedestrian-friendly core. Surrounded by world-class dining, shopping, and entertainment, this is one of Metro Denver's most vibrant areas.

The 6,058-square-foot, two-story building boasts an additional 1,833 square feet of multi-level rooftop terraces with breathtaking mountain views. The high-end architectural design includes various dining and bar areas, cozy lounges, and indoor and outdoor fireplaces. Impressive finishes throughout combine brick, wood, and metal detailing, complemented by dramatic suspended wood beams.

This property is ideally suited to a concept designed for the Colorado lifestyle. Take advantage of this unique opportunity to offer entertainment, stunning mountain views, outstanding beverages, and delicious food for year-round enjoyment under one roof.

PROPERTY HIGHLIGHTS

- Highly-desirable downtown Littleton submarket
- Transferable liquor license
- 45 feet of frontage on West Main Street
- Formerly the Tavern Littleton
- Abundant street parking

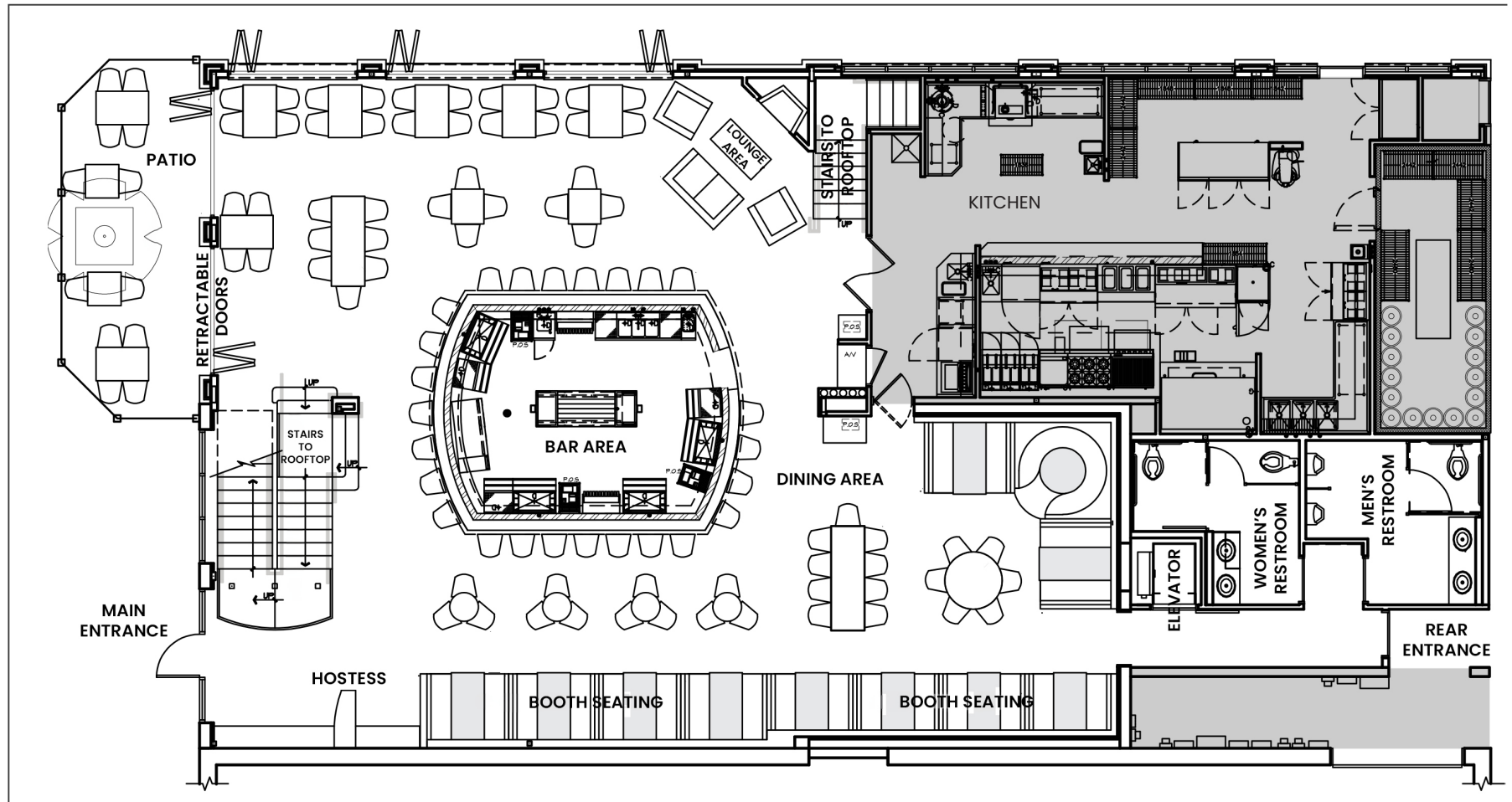


Address	2589 W Main Street Littleton, CO 80120
Price	\$3,000,000
Building SF	6,058 SF 1,833 Rooftop Patio (Approx.)
Lot Size	3,833 SF
Zoning	DMS (Downtown Main Street)
Occupancy	Currently Vacant
Building Type	Restaurant/Retail
Submarket	Old Town Littleton
Year Built	2011
Property Taxes	\$52,443.85 (2024)

FIRST LEVEL FLOOR PLAN

CURTICE STREET

MAIN STREET

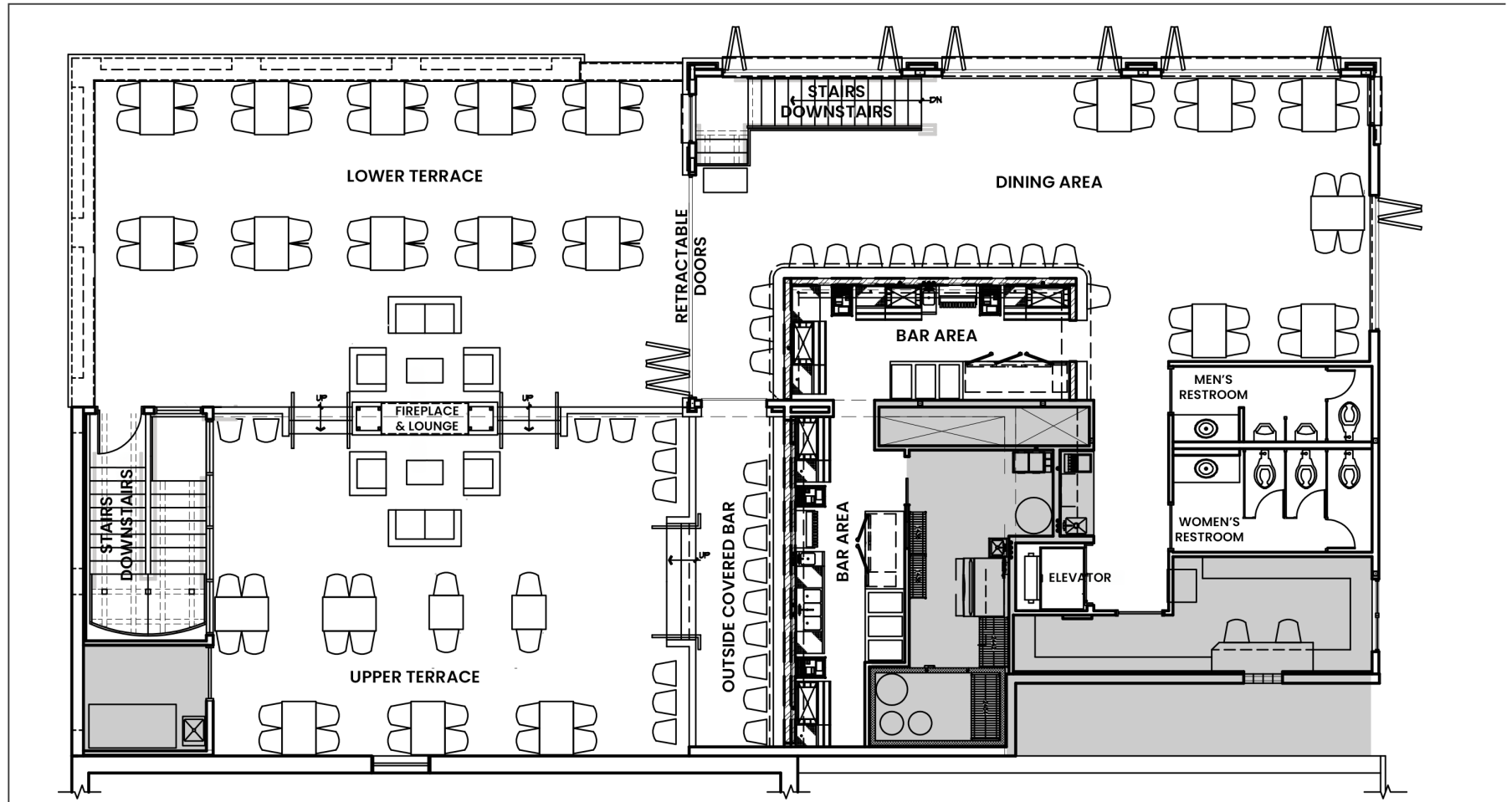


FIRST LEVEL FLOOR PLAN

SECOND LEVEL FLOOR PLAN

CURTICE STREET

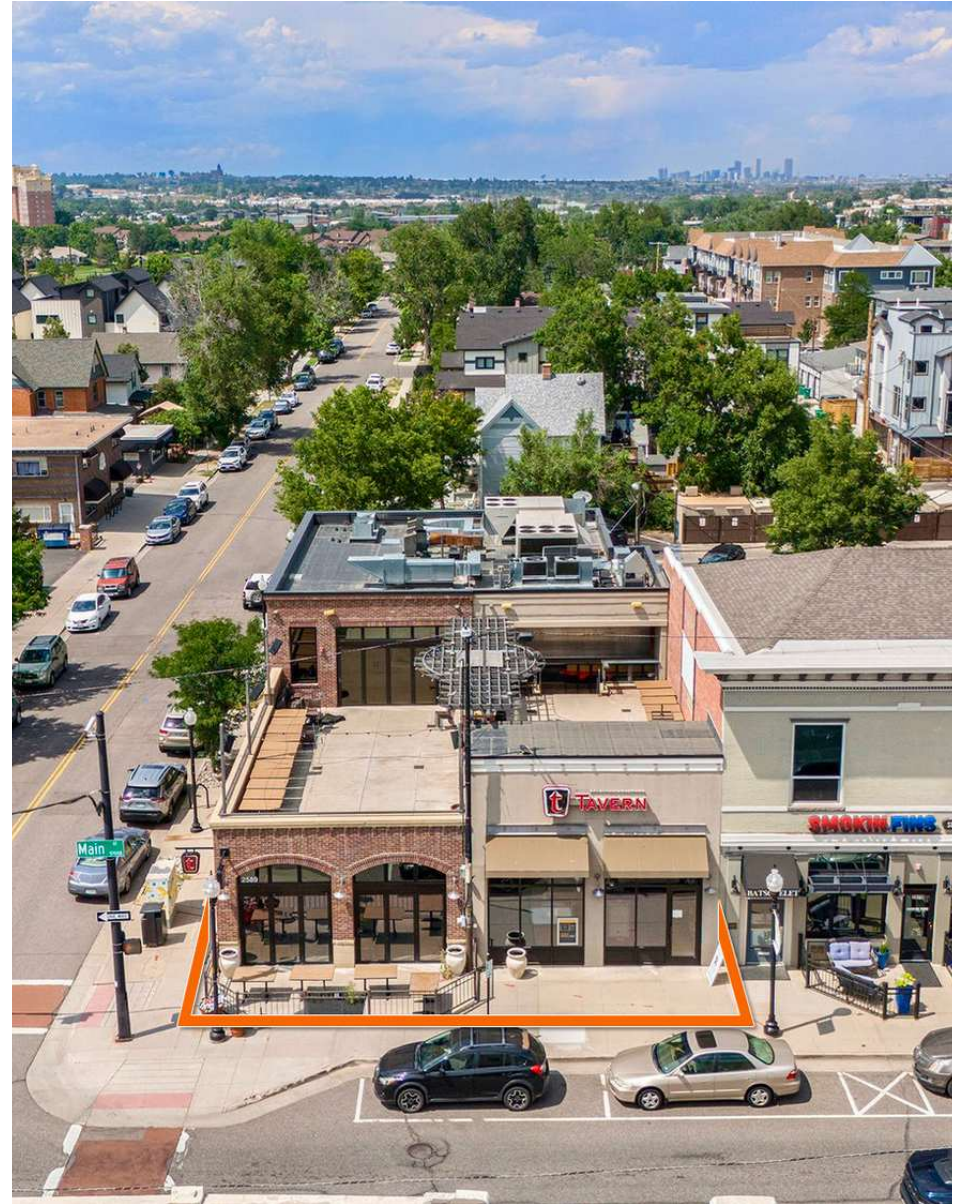
MAIN STREET

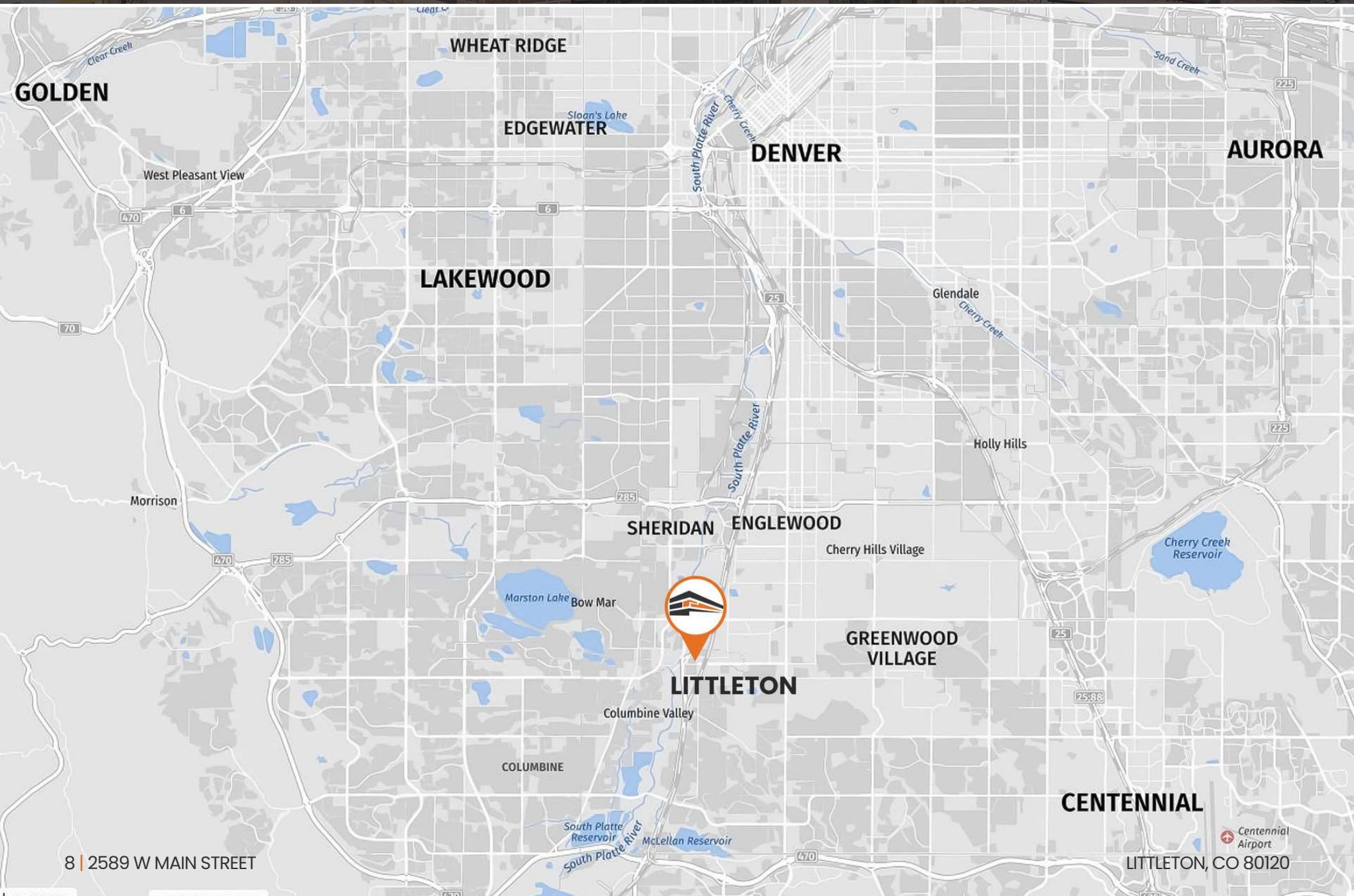


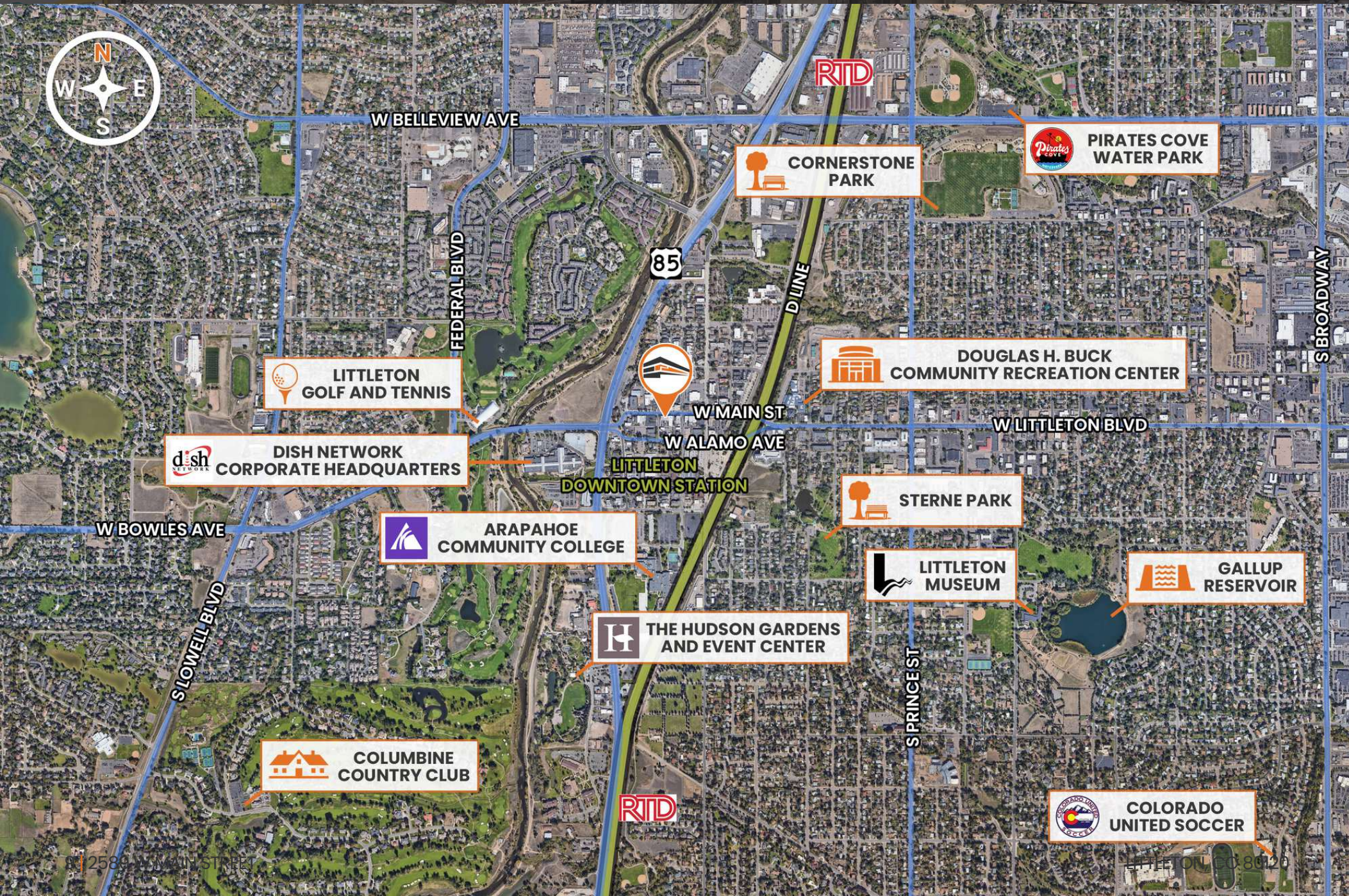
SECOND LEVEL FLOOR PLAN

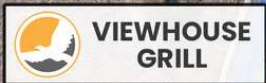
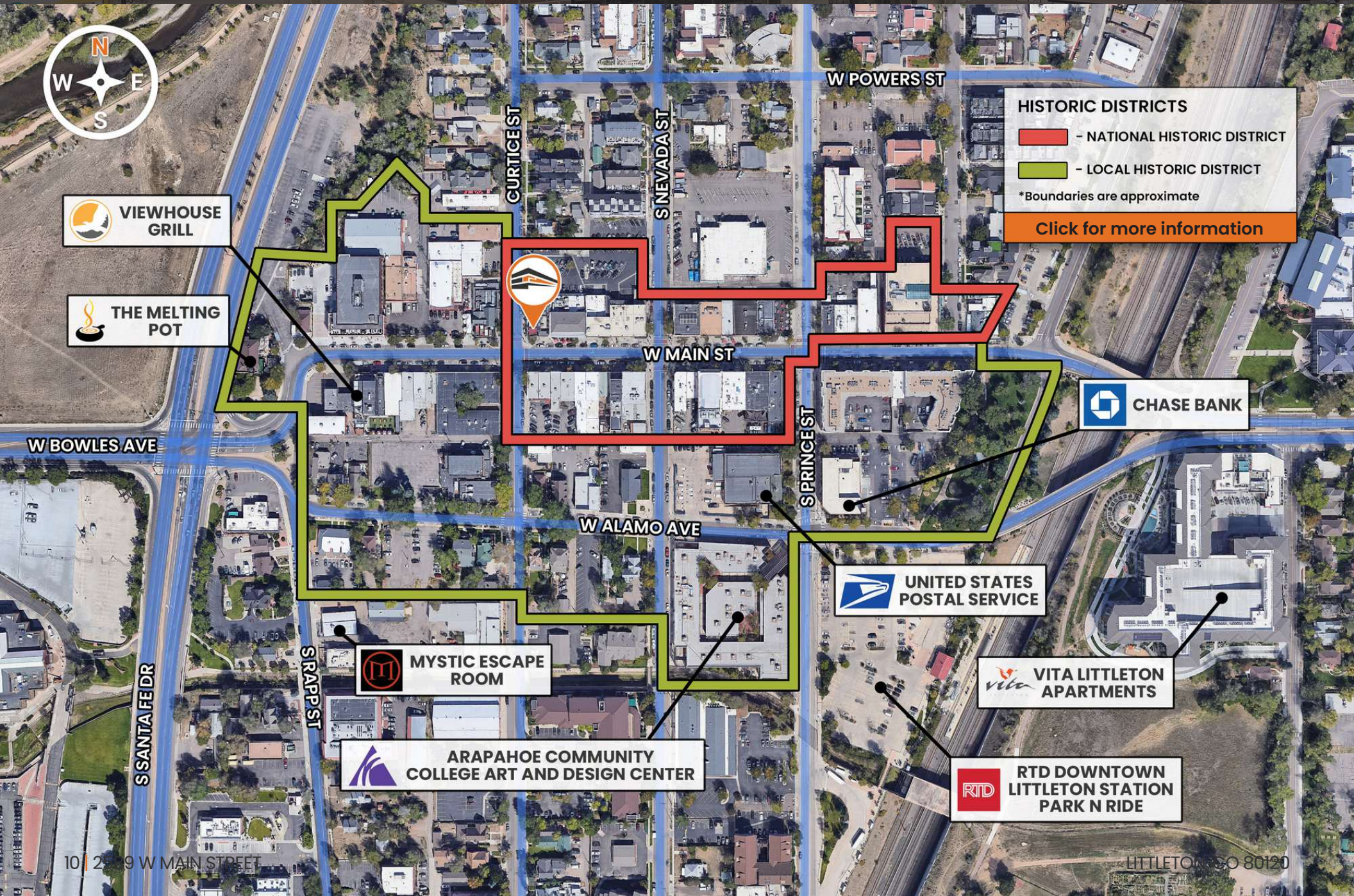












W BOWLES AVE

CURTICE ST

NEVADA ST

W POWERS ST

W MAIN ST

W ALAMO AVE

SPRING ST

S RAPIST ST

S SANTA FE DR

HISTORIC DISTRICTS

-  - NATIONAL HISTORIC DISTRICT
-  - LOCAL HISTORIC DISTRICT

*Boundaries are approximate

[Click for more information](#)



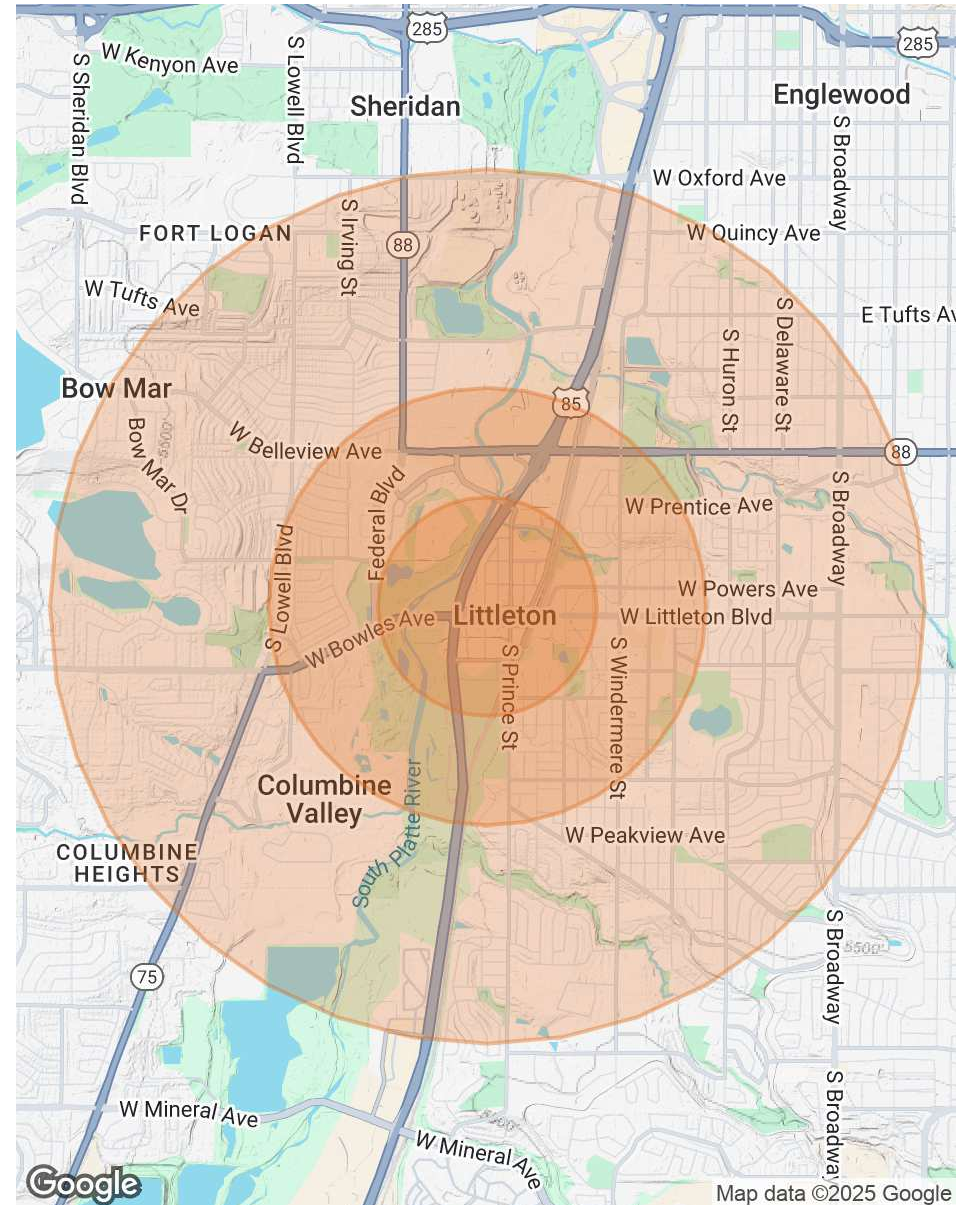
POPULATION

	0.5 MILES	1 MILE	2 MILES
Total Population	2,772	13,188	44,633
Average Age	46	43	42
Average Age (Male)	43	41	41
Average Age (Female)	48	44	43

HOUSEHOLDS & INCOME

	0.5 MILES	1 MILE	2 MILES
Total Households	1,551	6,470	19,258
# of Persons per HH	1.8	2	2.3
Average HH Income	\$95,335	\$105,510	\$121,716
Average House Value	\$803,829	\$687,434	\$729,656

Demographics data derived from AlphaMap



CONFIDENTIALITY & DISCLAIMER

All materials and information received or derived from Henry Group LLC d/b/a, Henry Group Real Estate its directors, officers, agents, advisors, affiliates and/or any third party sources are provided without representation or warranty as to completeness, veracity, or accuracy, condition of the property, compliance or lack of compliance with applicable governmental requirements, developability or suitability, financial performance of the property, projected financial performance of the property for any party's intended use or any and all other matters.

Neither Henry Group LLC d/b/a, Henry Group Real Estate, its directors, officers, agents, advisors, or affiliates makes any representation or warranty, express or implied, as to accuracy or completeness of any materials or information provided, derived, or received. Materials and information from any source, whether written or verbal, that may be furnished for review are not a substitute for a party's active conduct of its own due diligence to determine these and other matters of significance to such party. Henry Group LLC d/b/a, Henry Group Real Estate will not investigate or verify any such matters or conduct due diligence for a party unless otherwise agreed in writing.

EACH PARTY SHALL CONDUCT ITS OWN INDEPENDENT INVESTIGATION AND DUE DILIGENCE.

Any party contemplating or under contract or in escrow for a transaction is urged to verify all information and to conduct their own inspections and investigations including through appropriate third party independent professionals selected by such party. All financial data should be verified by the party including by obtaining and reading applicable documents and reports and consulting appropriate independent professionals. Henry Group LLC d/b/a, Henry Group Real Estate makes no warranties and/or representations regarding the veracity, completeness, or relevance of any financial data or assumptions. Henry Group LLC d/b/a, Henry Group Real Estate does not serve as a financial advisor to any party regarding any proposed transaction. All data and assumptions regarding financial performance, including that used for financial modeling purposes, may differ from actual data or performance. Any estimates of market rents and/or projected rents that may be provided to a party do not necessarily mean that rents can be established at or increased to that level. Parties must evaluate any applicable contractual and governmental limitations as well as market conditions, vacancy factors and other issues in order to determine rents from or for the property.

Legal questions should be discussed by the party with an attorney. Tax questions should be discussed by the party with a certified public accountant or tax attorney. Title questions should be discussed by the party with a title officer or attorney. Questions regarding the condition of the property and whether the property complies with applicable governmental requirements should be discussed by the party with appropriate engineers, architects, contractors, other consultants and governmental agencies. All properties and services are marketed by Henry Group LLC d/b/a, Henry Group Real Estate in compliance with all applicable fair housing and equal opportunity laws.



495 S Pearl Street, Denver, CO 80209 | 303.625.7444 | www.henrygroupe.com