



9<sup>th</sup> Floor - 1080 Howe Street | Vancouver, BC

## FOR LEASE | Downtown Vancouver Executive Place Tower

Opportunity to lease a full floor penthouse (5,053 SF) of fully-improved, premier office space in the heart of downtown Vancouver. Centrally situated at Howe and Helmcken, this building is within close proximity to public transportation, trendy restaurants and is within walking distance to all points on the downtown peninsula.



## 9<sup>th</sup> Floor - 1080 Howe Street Vancouver, BC

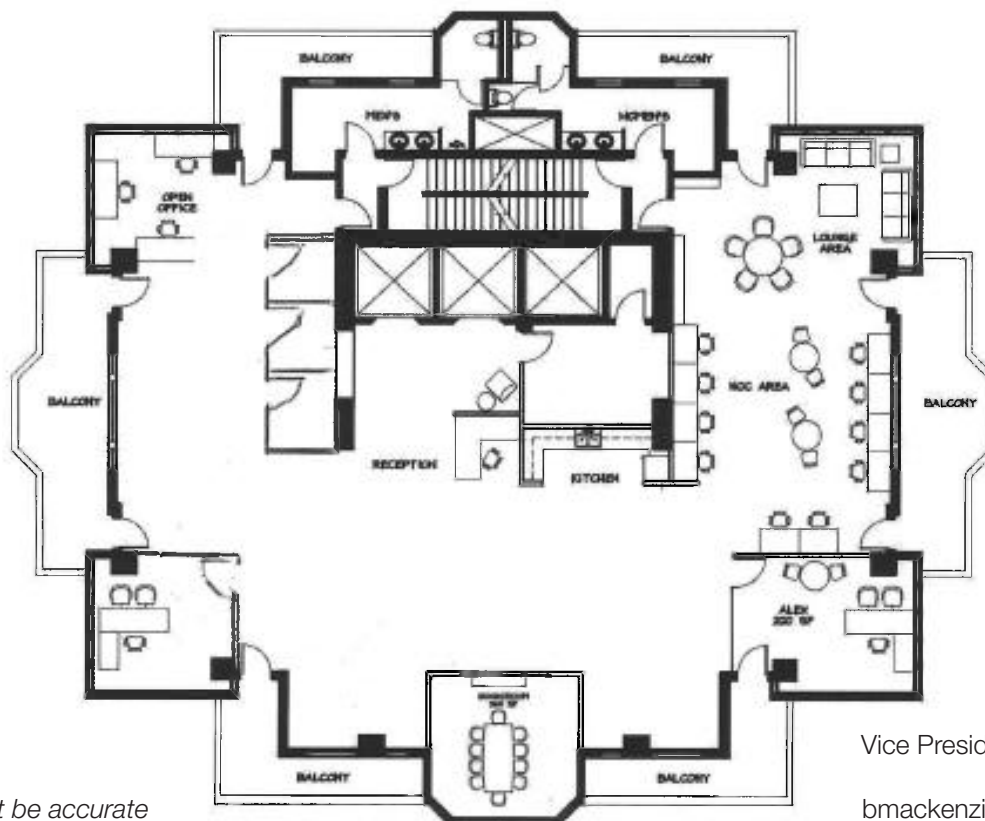
### Property Description

The full 9<sup>th</sup> floor (the top floor of the building) is available for lease. The premises features a mixture of private offices, meeting rooms, three breakout rooms, private washrooms, large, open kitchen, private balconies and open area.

### Highlights

- ▶ Full floor penthouse
- ▶ Six private balconies with plenty of fresh air
- ▶ Fully-improved space
- ▶ Underground parking
- ▶ Gym, showers, kitchen and common boardroom
- ▶ Open area & enclosed offices with glass doors
- ▶ Double glass door entry to the building
- ▶ Open area with lots of natural light
- ▶ Space for multiple workstations

### Floor Plan



\*Floor plan may not be accurate

## Property Details

### Size

5,053 SF

### Base Rent

\$20.00/SF

### Operating Cost and Property Taxes

\$22.00/SF (2024 estimate)

### Parking

Eight (8) stalls available at \$200/month per stall plus taxes

### Availability

Immediate

**Brian Mackenzie**

Vice President, Leasing & Sales

604 691 6618

[bmackenzie@naicommercial.ca](mailto:bmackenzie@naicommercial.ca)



