

FOR SALE

322,170 SF INDUSTRIAL BUILDING

970 Ogden Road | Peshtigo, WI



Well maintained industrial building for sale in the City of Peshtigo. The facility is located on the east side of Peshtigo in the Pine View Commercial & Industrial Park less than a mile from Hwy 41. The facility is divisible and

THERE ARE 3 SALE OPTIONS AVAILABLE:

- The entire 322,170 sf building
- West Building, which is 136,000 sf
- East Building, which is 186,170 sf

Currently, there is 80,000 sf leased.

ENTIRE BUILDING	
SALE PRICE	\$14,500,000 (\$45.00 psf)
BUILDING SIZE	Mfg/warehouse: 316,972 sf Office: 12,000 sf Total: 322,170 sf
LOT SIZE	43.19 acres
PARCEL #	271-00609.005
CEILING HEIGHT	19' to 24'
TRAILER PARKING	22 acres, graveled
DOCK DOORS	2 covered
OVERHEAD DOORS	7
SPRINKLERED	Yes
ELECTRICAL	3-phase/800 amps
ZONED	Light Industrial

WEST BUILDING	
BUILDING SIZE	Heated warehouse: 130,000 sf Office: 6,000 sf Total: 136,000 sf
LOT SIZE	12 acres
SALE PRICE	\$6,500,000 (\$50.00 psf)
CEILING HEIGHT	12'
DOCK DOORS	2 covered, w/ramp
OVERHEAD DOORS	3 covered and 3 uncovered

EAST BUILDING	
BUILDING SIZE	Heated warehouse: 180,00 sf Office: 6,170 sf Total: 186,170 sf
LOT SIZE	31.19 acres
SALE PRICE	\$8,000,000 (\$42.97 psf)
CEILING HEIGHT	24'
TRAILER PARKING	22 graveled acres
OVERHEAD DOORS	1
DOCK DOORS	1



Todd DeVillers, SIOR, CCIM

Managing Partner

920.470.7573

todd.devillers@recwi.com

RE Commercial LLC

677 Baeten Rd, Green Bay, WI

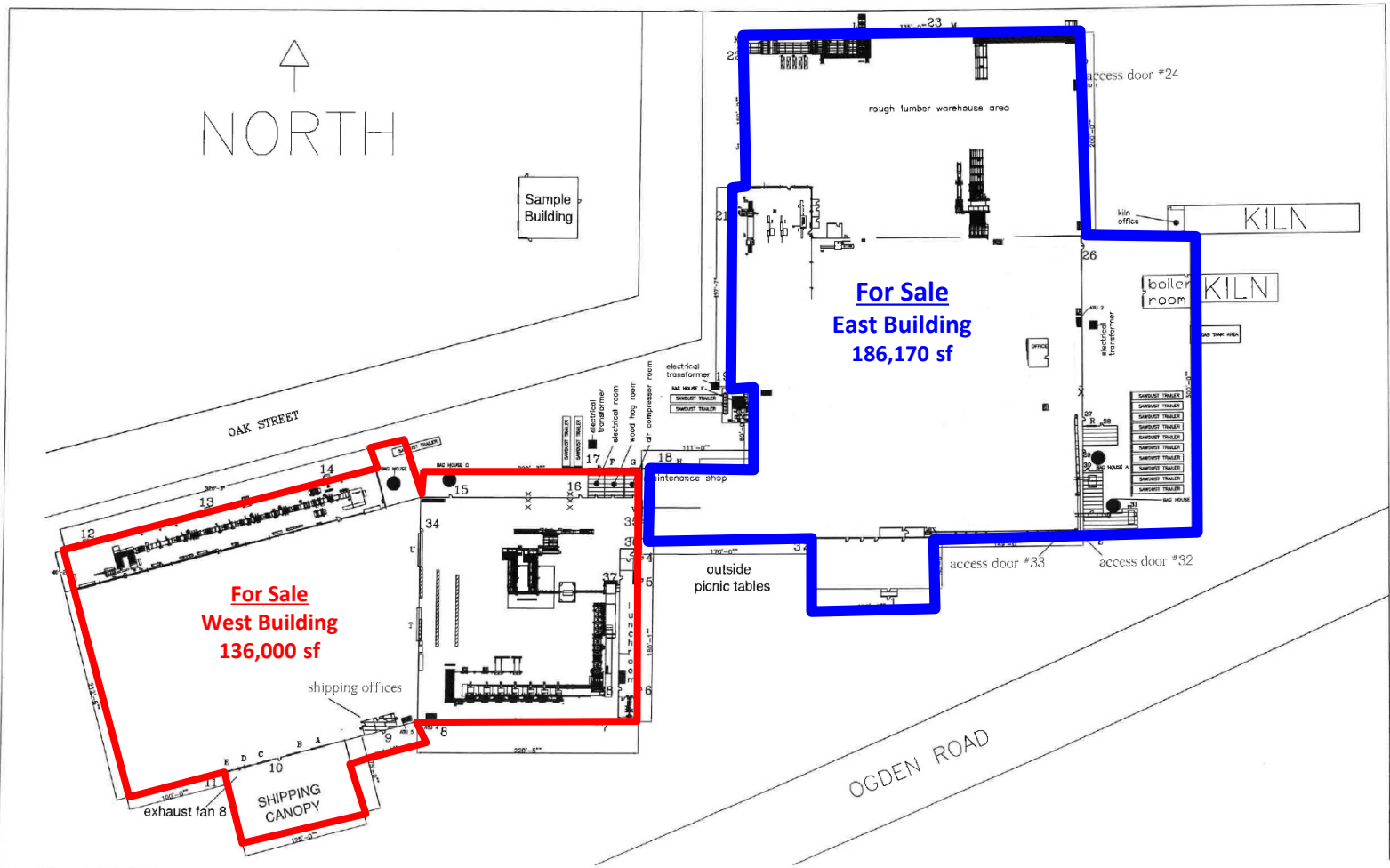
920.997.3334

www.recommercialwi.com

FOR SALE

322,170 SF INDUSTRIAL BUILDING

970 Ogden Road
Peshtigo, WI



For Sale
West Building
136,000 sf

For Sale
East Building
186,170 sf

All of the information furnished above is believed to be accurate in all rational respects and was obtained from source(s) reasonably believed to be reliable. However, RE Commercial LLC has not verified the accuracy of such information and makes no guarantees, warranties or representations about the accuracy and validity of such information or its source(s). The information provided herein is subject to the possibility of errors, omissions and/or changes relating to the price, condition and/or any other circumstance without notice. RE Commercial LLC shall not be liable for any losses or damages, including, without limitation, any indirect or consequential losses or damages, whatsoever, arising from or out of the reliance on the accuracy and validity of the information provided for herein.

Todd DeVillers, SIOR, CCIM
Managing Partner
920.470.7573
todd.devillers@recwi.com

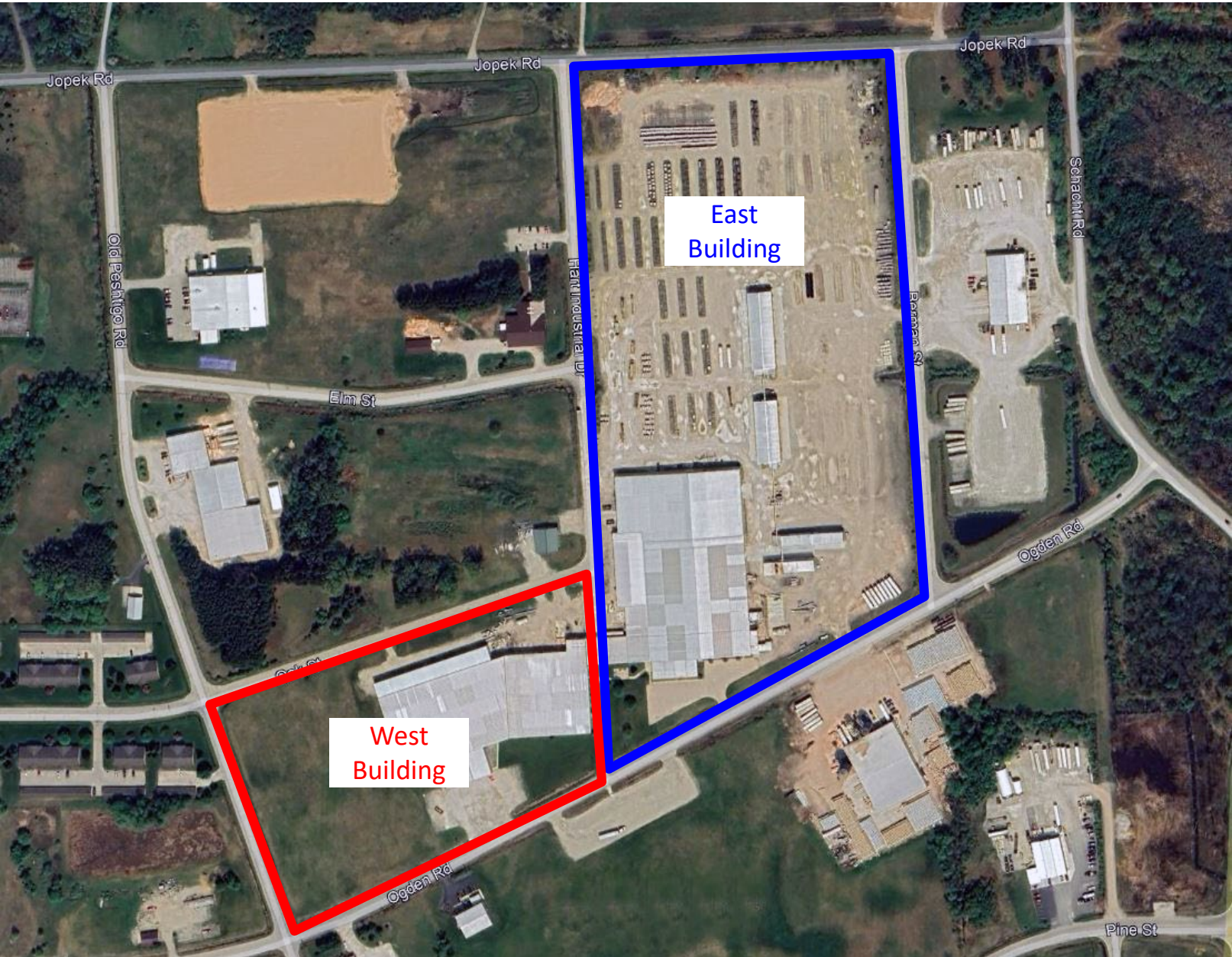
RE Commercial LLC
677 Baeten Rd, Green Bay, WI
920.997.3334
www.recommercialwi.com



FOR SALE

322,170 SF INDUSTRIAL BUILDING

970 Ogden Road
Peshtigo, WI



Todd DeVillers, SIOR, CCIM
Managing Partner
920.470.7573
todd.devillers@recwi.com

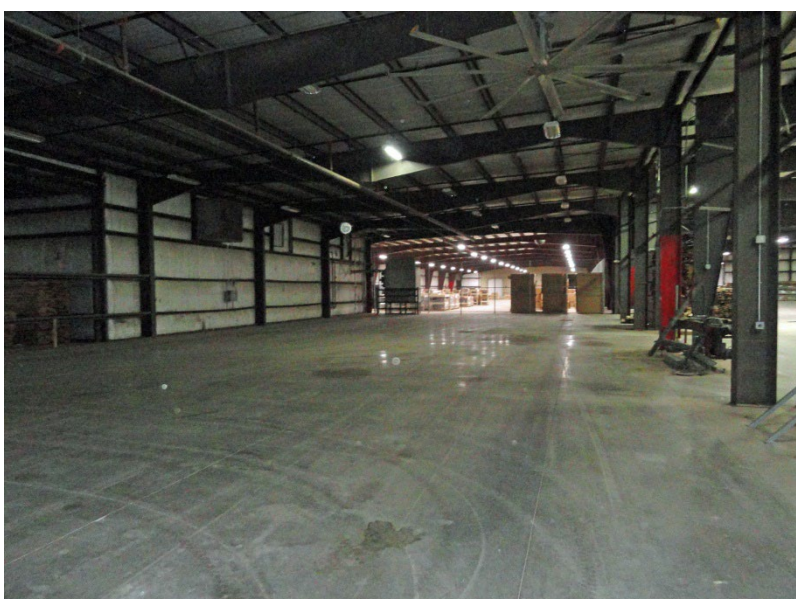
RE Commercial LLC
677 Baeten Rd, Green Bay, WI
920.997.3334
www.recommercialwi.com



FOR SALE

322,170 SF INDUSTRIAL BUILDING

970 Ogden Road
Peshtigo, WI



Todd DeVillers, SIOR, CCIM
Managing Partner
920.470.7573
todd.devillers@recwi.com

RE Commercial LLC
677 Baeten Rd, Green Bay, WI
920.997.3334
www.recommercialwi.com



DISCLOSURE TO NON-RESIDENTIAL CUSTOMERS

1 Prior to negotiating on your behalf the brokerage firm, or an agent associated with the firm, must provide you the
2 following disclosure statement:

3 **DISCLOSURE TO CUSTOMERS** You are a customer of the brokerage firm (hereinafter Firm). The Firm is either an agent
4 of another party in the transaction or a subagent of another firm that is the agent of another party in the transaction. A
5 broker or a salesperson acting on behalf of the Firm may provide brokerage services to you. Whenever the Firm is
6 providing brokerage services to you, the Firm and its brokers and salespersons (hereinafter Agents) owe you, the
7 customer, the following duties:

- 8 (a) The duty to provide brokerage services to you fairly and honestly.
- 9 (b) The duty to exercise reasonable skill and care in providing brokerage services to you.
- 10 (c) The duty to provide you with accurate information about market conditions within a reasonable time if you request
11 it, unless disclosure of the information is prohibited by law.
- 12 (d) The duty to disclose to you in writing certain Material Adverse Facts about a property, unless disclosure of the
13 information is prohibited by law (see lines 42-51).
- 14 (e) The duty to protect your confidentiality. Unless the law requires it, the Firm and its Agents will not disclose your
15 confidential information or the confidential information of other parties (see lines 23-41).
- 16 (f) The duty to safeguard trust funds and other property held by the Firm or its Agents.
- 17 (g) The duty, when negotiating, to present contract proposals in an objective and unbiased manner and disclose the
18 advantages and disadvantages of the proposals.

19 Please review this information carefully. An Agent of the Firm can answer your questions about brokerage services,
20 but if you need legal advice, tax advice, or a professional home inspection, contact an attorney, tax advisor, or home
21 inspector. This disclosure is required by section 452.135 of the Wisconsin statutes and is for information only. It is a
22 plain-language summary of the duties owed to a customer under section 452.133(1) of the Wisconsin statutes.

23 **CONFIDENTIALITY NOTICE TO CUSTOMERS** The Firm and its Agents will keep confidential any information given to the
24 Firm or its Agents in confidence, or any information obtained by the Firm and its Agents that a reasonable person
25 would want to be kept confidential, unless the information must be disclosed by law or you authorize the Firm to
26 disclose particular information. The Firm and its Agents shall continue to keep the information confidential after the
27 Firm is no longer providing brokerage services to you.

28 The following information is required to be disclosed by law:

- 29 1. Material Adverse Facts, as defined in Wis. Stat. § 452.01(5g) (see lines 42-51).
- 30 2. Any facts known by the Firm or its Agents that contradict any information included in a written inspection
31 report on the property or real estate that is the subject of the transaction.

32 To ensure that the Firm and its Agents are aware of what specific information you consider confidential, you may
33 list that information below (see lines 35-41) or provide that information to the Firm or its Agents by other means. At a
34 later time, you may also provide the Firm or its Agents with other Information you consider to be confidential.

35 **CONFIDENTIAL INFORMATION:** _____
36 _____
37 _____

38 **NON-CONFIDENTIAL INFORMATION** (the following information may be disclosed by the Firm and its Agents): _____
39 _____
40 _____

41 _____ (Insert information you authorize to be disclosed, such as financial qualification information.)
42 _____

42 **DEFINITION OF MATERIAL ADVERSE FACTS**

43 A "Material Adverse Fact" is defined in Wis. Stat. § 452.01(5g) as an Adverse Fact that a party indicates is of such
44 significance, or that is generally recognized by a competent licensee as being of such significance to a reasonable
45 party, that it affects or would affect the party's decision to enter into a contract or agreement concerning a transaction
46 or affects or would affect the party's decision about the terms of such a contract or agreement.

47 An "Adverse Fact" is defined in Wis. Stat. § 452.01(1e) as a condition or occurrence that a competent licensee
48 generally recognizes will significantly and adversely affect the value of the property, significantly reduce the structural
49 integrity of improvements to real estate, or present a significant health risk to occupants of the property; or information
50 that indicates that a party to a transaction is not able to or does not intend to meet his or her obligations under a
51 contract or agreement made concerning the transaction.

52 **NOTICE ABOUT SEX OFFENDER REGISTRY** You may obtain information about the sex offender registry and persons
53 registered with the registry by contacting the Wisconsin Department of Corrections on the Internet at
54 <http://www.doc.wi.gov> or by telephone at 608-240-5830.

No representation is made as to the legal validity of any provision in any specific transaction.
Copyright © 2016 by Wisconsin REALTORS® Association Drafted by Attorney Debra Peterson Conrad