

DEER CREEK MARKETPLACE - RESTAURANT FOR LEASE



SPACE HIGHLIGHTS

- **8,995 SF Freestanding Restaurant**
- Located at 135th St & Metcalf, a premier retail intersection in the KC Metro
- Surrounded by densely populated residential neighborhoods
- Excellent visibility to over 60,000 cars per day with a dedicate stoplight at 135th St & Metcalf
- Located in one of Kansas City's busiest corridors with national and local retailers and premier restaurants.
- Join Hen House, Panera, Snooze, Chipotle and more!

LEASING CONTACT

ERIN JOHNSTON

P (816) 701-5028

ejohnston@copaken-brooks.com

KASSIE MURPHY

P (816) 701-5030

kmurphy@copaken-brooks.com

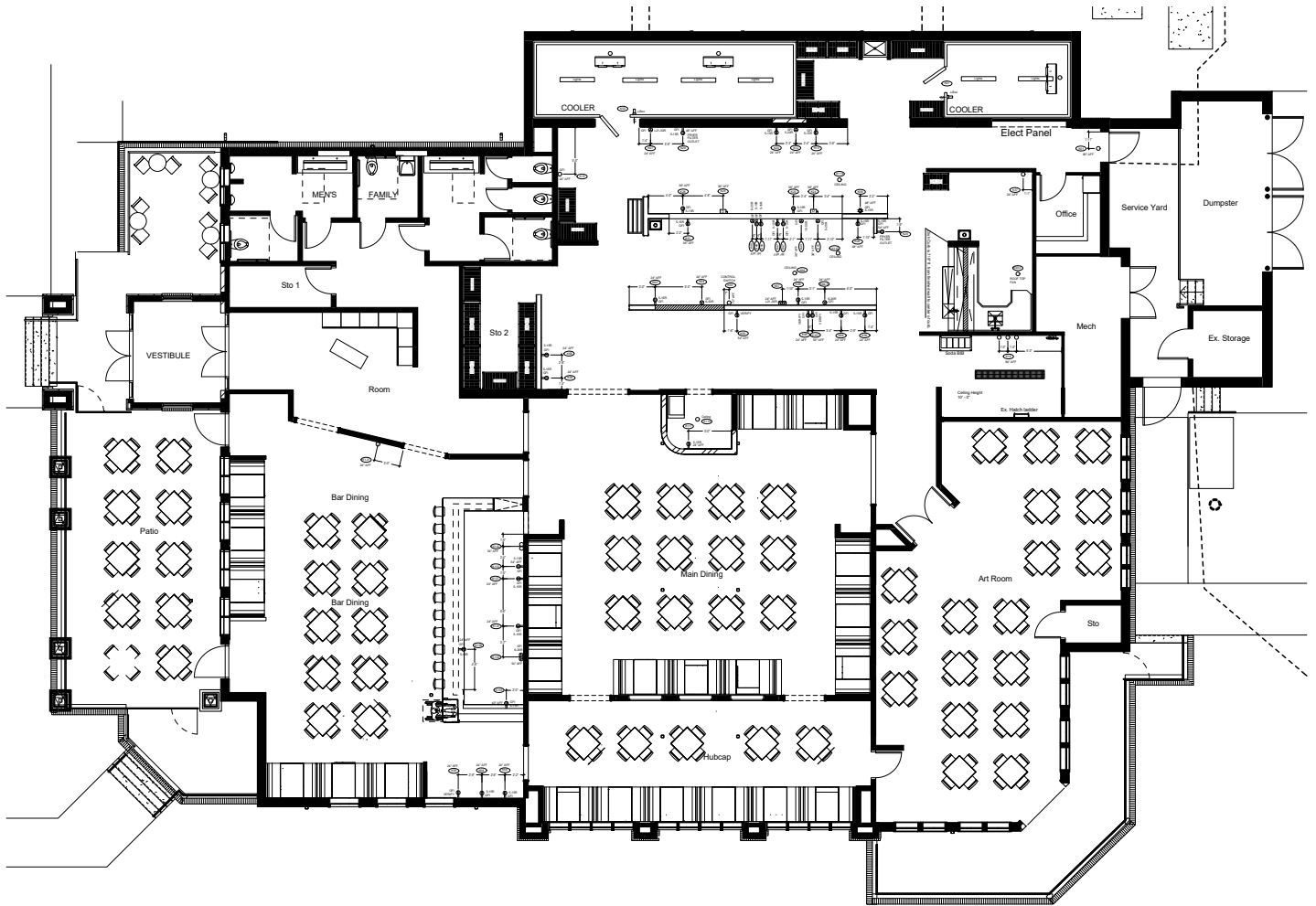
SITE PLAN



Deer Creek Marketplace Tenants

- | | | |
|------------------------------------|----------------------------------|---|
| 1 Tide Dry Cleaners | 2 AVAILABLE - 3,180 SF | 3 AVAILABLE - 1,512 SF |
| 4 Stitch Salon | 5 Results By Rob | 6 Artisan Nail Spa |
| 7 LA Bikini | 8 Betty Rae's | 9 Hen House |
| 10 Metcalf Discount Liquor | 11 Panera | 12 Kyoto Sushi & Steak |
| 13 AVAILABLE - 1,600 SF | 14 SportClips | 15 Crumbl Cookies |
| 16 Amelia's Boutique | 17 Land of Paws | 18 Pilates of Kansas City |
| 19 Goodcents | 20 Children's Mercy | 21 AVAILABLE - 8,995 SF |
| 22 Nick & Jake's | 23 UMB Bank | 24 Academy Bank |
| 25 The Joint | 26 Prime IV | 27 UBREAKIFIX |
| 28 Snooze Eatery | 29 AAA Automotive Insurance | 30 Chipotle |
| 31 LEASE PENDING - 1,550 SF | 32 Salinity Salt & Flotation Spa | 33 Rise Southern Biscuits & Righteous Chicken |
| 34 Ethan Allen | | |

FLOOR PLAN



RESTAURANT SPACE FOR LEASE



LEASING CONTACT

ERIN JOHNSTON

P (816) 701-5028

ejohnston@copaken-brooks.com

KASSIE MURPHY

P (816) 701-5030

kmurphy@copaken-brooks.com

All information furnished regarding property for sale or lease is from sources deemed reliable, but no warranty or representation is made as to the accuracy thereof and the same is subject to errors, omissions, changes of prices, rental or other conditions, prior sale or lease, or withdrawal without notice.