



WAREHOUSE CONDOMINIUM

6200 DAYS COVE ROAD | WHITE MARSH, MARYLAND 21162

FOR
LEASE

8,800 SF ± AVAILABLE



MACKENZIE

COMMERCIAL REAL ESTATE SERVICES, LLC

PROPERTY OVERVIEW

HIGHLIGHTS:

- 8,800 SF \pm warehouse condominium available
- Includes 4,000 SF \pm of office
- Well-maintained suite
- Security cameras
- Ample on-site parking
- Close proximity to the Port of Baltimore
- Excellent access to I-95, I-685 and MD Route 40 (Pulaski Highway) in White Marsh

AVAILABLE:

8,800 SF \pm (UNIT 5)

CLEAR HEIGHT:

27' \pm

DOCKS:

2 (9' x 10')

POWER:

3-PHASE 277/480V

SPRINKLER:

ESFR

WAREHOUSE HEAT:

GAS FIRED UNIT HEATERS

ZONING:

ML (MANUFACTURING, LIGHT)

RENTAL RATE:

\$10.50 PSF, NNN



GOOGLE STREET VIEW

LOCAL BIRDSEYE



TRADE AREA

DRIVING DISTANCE TO:

40 0.0 MILES
0 MIN. DRIVE

95 3.4 MILES
6 MIN. DRIVE

695 6.8 MILES
8 MIN. DRIVE

PORT OF BALTIMORE
15.9 MILES
18 MIN. DRIVE
(SEAGIRT MARINE TERMINAL)

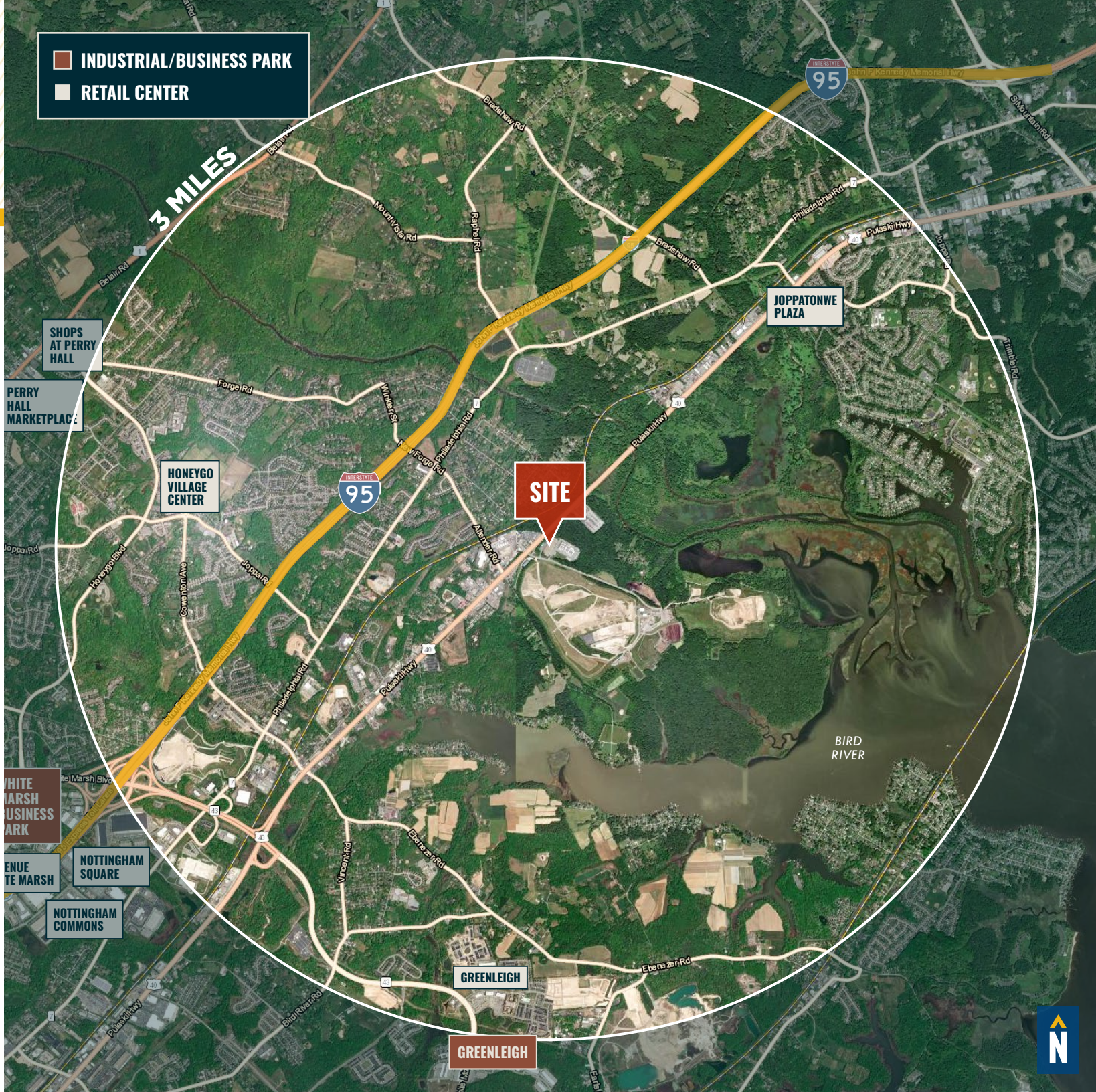
BWI
24.8 MILES
26 MIN. DRIVE

BALTIMORE, MD 24.0 MILES
15 MIN.

WASHINGTON, DC 53.8 MILES
55 MIN.

PHILADELPHIA, PA 86.9 MILES
1 HR. 25 MIN.

RICHMOND, VA 167.0 MILES
2 HRS. 30 MIN.



FOR MORE INFO CONTACT:



DANIEL HUDAK, SIOR

SENIOR VICE PRESIDENT & PRINCIPAL

443.573.3205

DHUDAK@mackenziecommercial.com



ALTON CURRY

REAL ESTATE ADVISOR

443.841.9780

ACURRY@mackenziecommercial.com



ANDREW MEEDER, SIOR

SENIOR VICE PRESIDENT & PRINCIPAL

410.494.4881

AMEEDER@mackenziecommercial.com



MATTHEW CURRAN, SIOR

SENIOR VICE PRESIDENT & PRINCIPAL

443.573.3203

MCURRAN@mackenziecommercial.com



VISIT **PROPERTY PAGE** FOR MORE INFORMATION.



MACKENZIE

COMMERCIAL REAL ESTATE SERVICES, LLC

443-573-3200

**111 S. Calvert Street
Baltimore, MD 21202**

OFFICES IN: ANNAPOLIS, MD **BALTIMORE, MD** BEL AIR, MD COLUMBIA, MD LUTHERVILLE, MD CHARLOTTESVILLE, VA

www.MACKENZIECOMMERCIAL.com

No warranty or representation, expressed or implied, is made as to the accuracy of the information contained herein, and same is submitted subject to errors, omissions, change of price, rental or other conditions, withdrawal without notice, and to any specific listing conditions imposed by our principals.