

INDUSTRIAL FOR SALE

LAKEVILLE/EUREKA INDUSTRIAL LAND - 18.75 ACRES

9085 225TH STREET WEST, LAKEVILLE, MN 55044



KW COMMERCIAL MIDWEST

14665 Galaxie Avenue
Apple Valley, MN 55124



Each Office Independently Owned and Operated

PRESENTED BY:

DALE SEVERSON

Director of CREST
O: (651) 262-1000
C: (651) 491-1620
dales@kw.com
40242734, Minnesota

We obtained the information above from sources we believe to be reliable. However, we have not verified its accuracy and make no guarantee, warranty or representation about it. It is submitted subject to the possibility of errors, omissions, change of price, rental or other conditions, prior sale, lease or financing, or withdrawal without notice. We include projections, opinions, assumptions or estimates for example only, and they may not represent current or future performance of the property. You and your tax and legal advisors should conduct your own investigation of the property and transaction.

DISCLAIMER

9085 225TH STREET WEST



All materials and information received or derived from KW Commercial its directors, officers, agents, advisors, affiliates and/or any third party sources are provided without representation or warranty as to completeness, veracity, or accuracy, condition of the property, compliance or lack of compliance with applicable governmental requirements, developability or suitability, financial performance of the property, projected financial performance of the property for any party's intended use or any and all other matters.

Neither KW Commercial its directors, officers, agents, advisors, or affiliates makes any representation or warranty, express or implied, as to accuracy or completeness of the any materials or information provided, derived, or received. Materials and information from any source, whether written or verbal, that may be furnished for review are not a substitute for a party's active conduct of its own due diligence to determine these and other matters of significance to such party. KW Commercial will not investigate or verify any such matters or conduct due diligence for a party unless otherwise agreed in writing.

EACH PARTY SHALL CONDUCT ITS OWN INDEPENDENT INVESTIGATION AND DUE DILIGENCE.

Any party contemplating or under contract or in escrow for a transaction is urged to verify all information and to conduct their own inspections and investigations including through appropriate third-party independent professionals selected by such party. All financial data should be verified by the party including by obtaining and reading applicable documents and reports and consulting appropriate independent professionals. KW Commercial makes no warranties and/or representations regarding the veracity, completeness, or relevance of any financial data or assumptions. KW Commercial does not serve as a financial advisor to any party regarding any proposed transaction.

All data and assumptions regarding financial performance, including that used for financial modeling purposes, may differ from actual data or performance. Any estimates of market rents and/or projected rents that may be provided to a party do not necessarily mean that rents can be established at or increased to that level. Parties must evaluate any applicable contractual and governmental limitations as well as market conditions, vacancy factors and other issues in order to determine rents from or for the property. Legal questions should be discussed by the party with an attorney. Tax questions should be discussed by the party with a certified public accountant or tax attorney. Title questions should be discussed by the party with a title officer or attorney. Questions regarding the condition of the property and whether the property complies with applicable governmental requirements should be discussed by the party with appropriate engineers, architects, contractors, other consultants, and governmental agencies. All properties and services are marketed by KW Commercial in compliance with all applicable fair housing and equal opportunity laws.

KW COMMERCIAL MIDWEST

14665 Galaxie Avenue
Apple Valley, MN 55124



Each Office Independently Owned and Operated

PRESENTED BY:

DALE SEVERSON

Director of CREST
O: (651) 262-1000
C: (651) 491-1620
dales@kw.com
40242734, Minnesota

The calculations and data presented are deemed to be accurate, but not guaranteed. They are intended for the purpose of illustrative projections and analysis. The information provided is not intended to replace or serve as substitute for any legal, accounting, investment, real estate, tax or other professional advice, consultation or service. The user of this software should consult with a professional in the respective legal, accounting, tax or other professional area before making any decisions.

EXECUTIVE SUMMARY

9085 225TH STREET WEST



OFFERING SUMMARY

PRICE:	\$3,250,000
	18.75 acres PLUS:
	- Home
	- Two Car Garage
	- Equipment & Maintenance Barn
	- Large Concrete Driveway
BUILDING SF:	1,790 sq. ft. residence,
	620 sq. ft. Two Car garage,
	1,920 sq. ft storage
LOT SIZE:	18.75 acres Total
	14.75 acres PID #13-00600-04-011
	3.0 acres PID # 13-00600-04-030
	1.0 acres PID # 13-00600-04-040

PROPERTY OVERVIEW

South end of Lakeville, border of Eureka Township
Over 15 acres of Farmland
South End of Industrial Zoned Land - Amazon to N.
Near Fed Ex, Air lake Airport,
Major National Businesses within 1/2 mile

PROPERTY HIGHLIGHTS

- Two Car Garage
- Equipment & Maintenance Garage/Barn - approx. 2,000 sf
- Land used for Farming
- Large Concrete Drive to home and garage
- Easy access from Dodd Rd. through Lakeville

PROPERTY PHOTOS

9085 225TH STREET WEST



ATTACHMENT 3

9085 225TH STREET WEST

18.75 acres – 3 Parcels (14.75, 3.0, 1.0 acres)

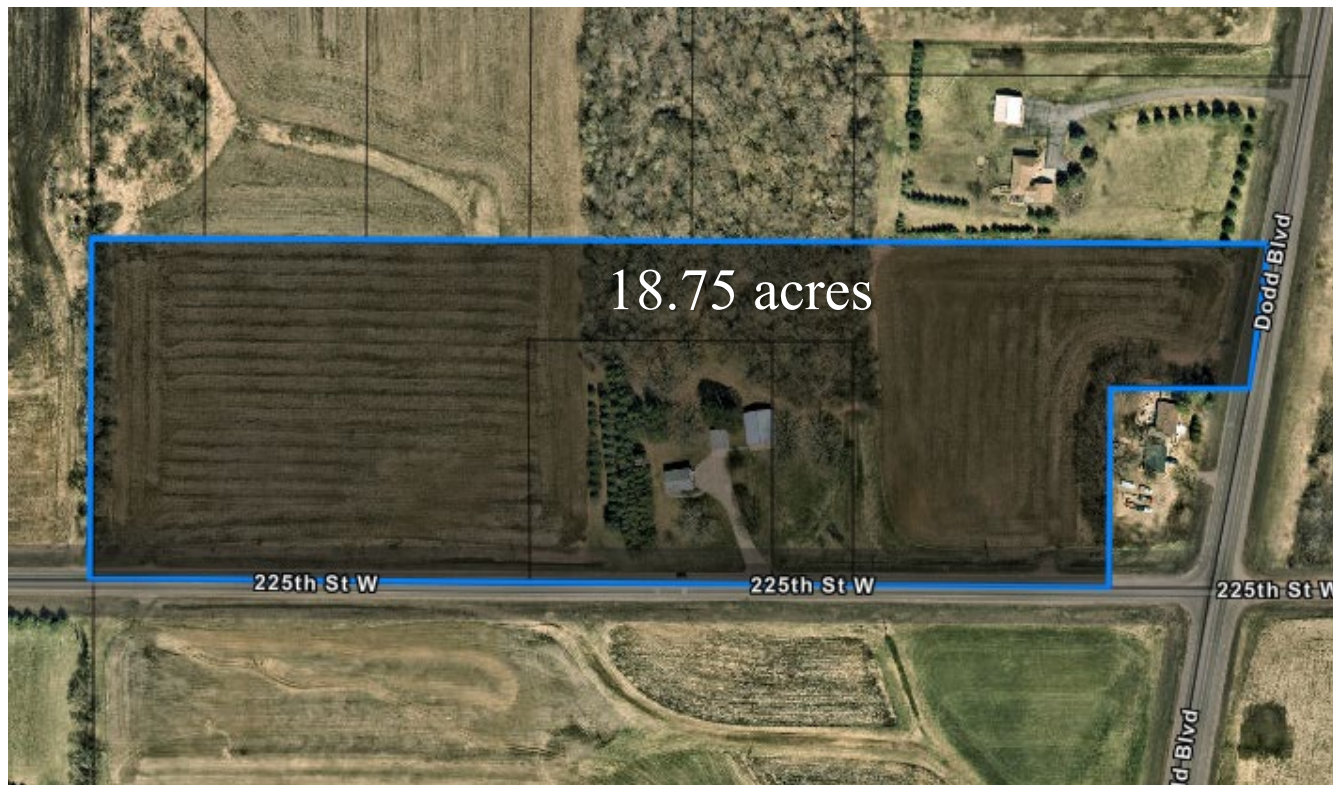
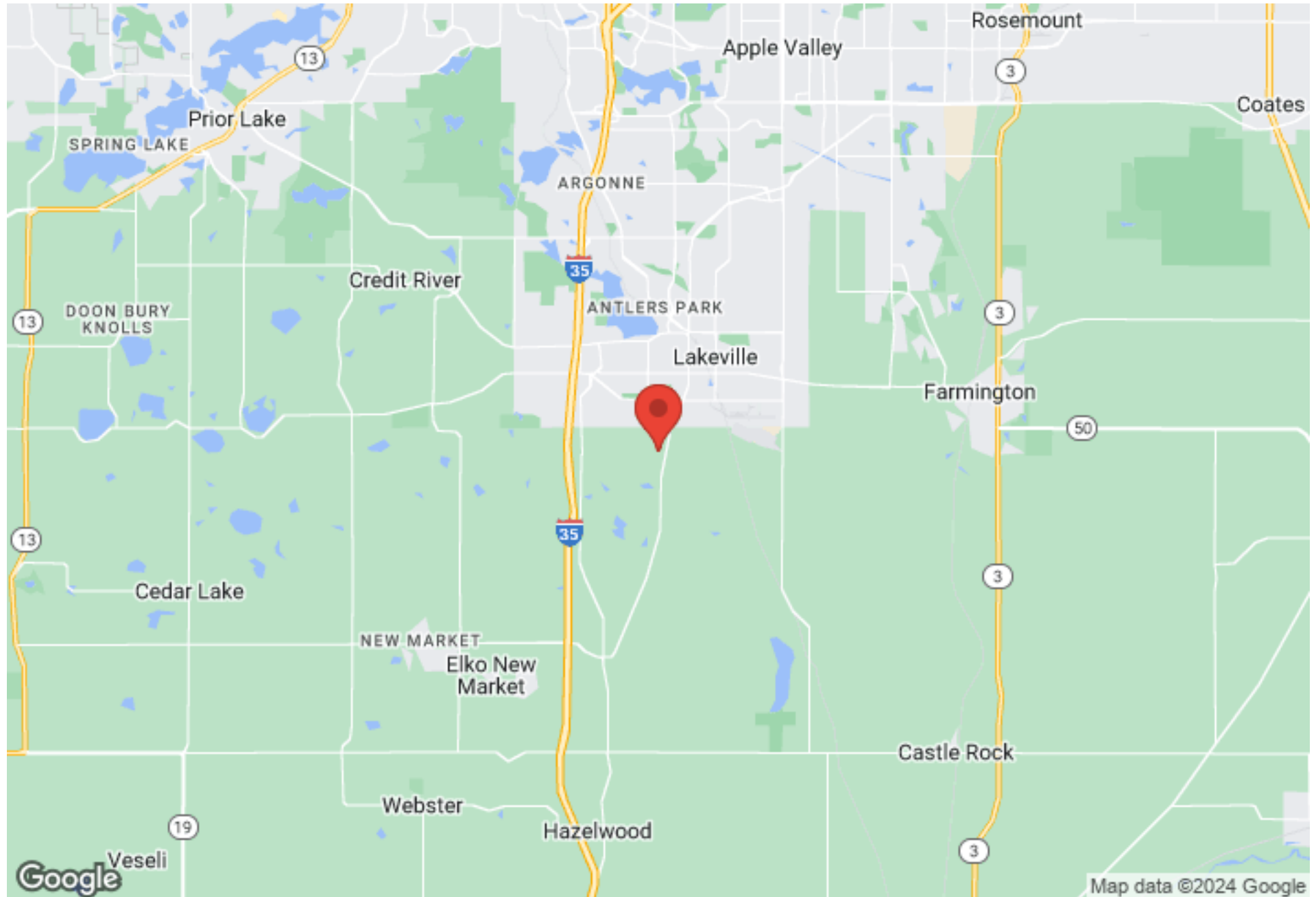


Photo Credit: gis.co.dakota.mn.us County Web photos

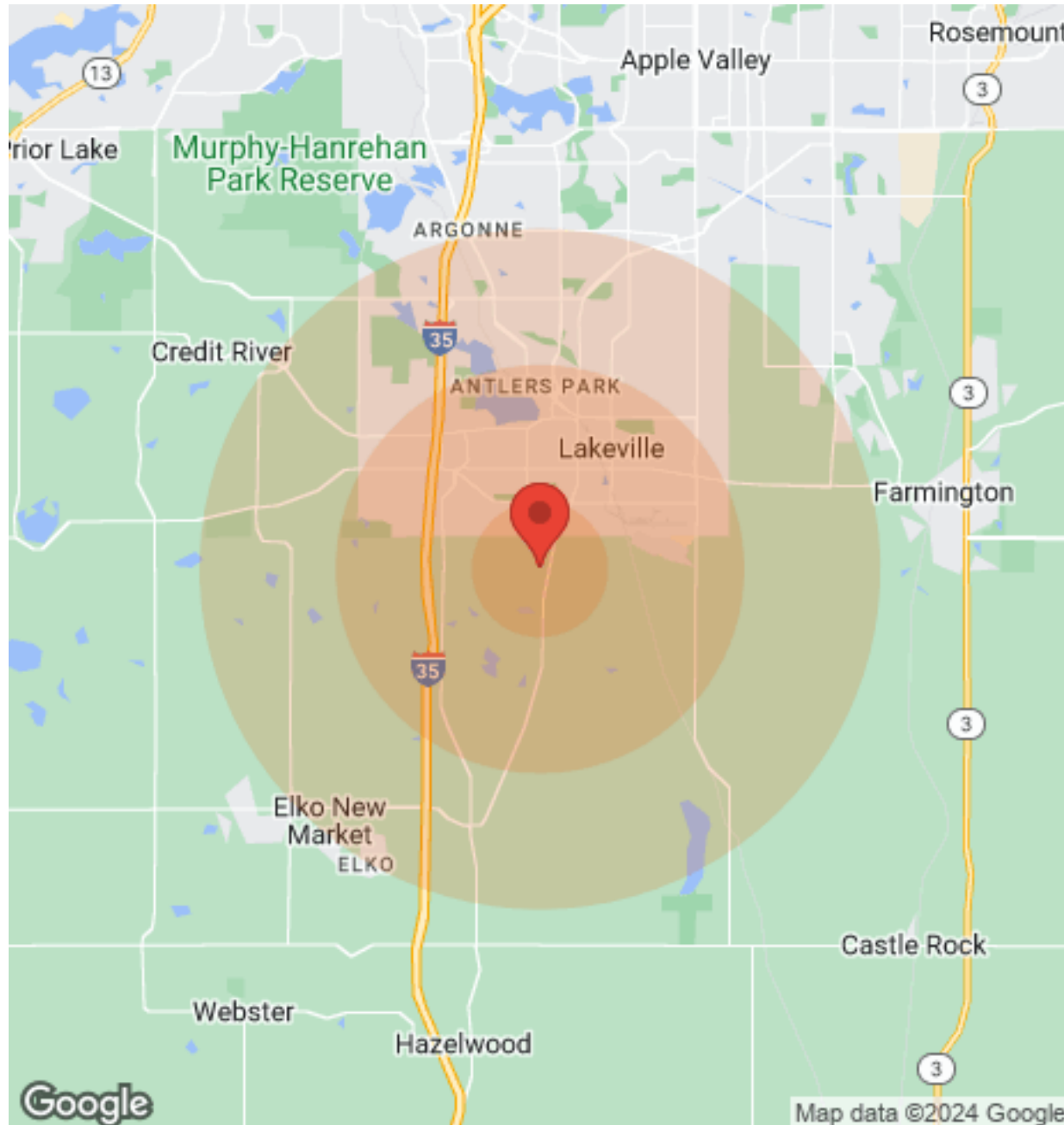
REGIONAL MAP

9085 225TH STREET WEST



DEMOGRAPHICS

9085 225TH STREET WEST



Population	1 Mile	3 Miles	5 Miles
Male	N/A	6,232	22,592
Female	N/A	6,069	21,888
Total Population	N/A	12,301	44,480

Age	1 Mile	3 Miles	5 Miles
Ages 0-14	N/A	2,868	10,403
Ages 15-24	N/A	2,159	7,569
Ages 25-54	N/A	4,507	16,624
Ages 55-64	N/A	1,379	5,017
Ages 65+	N/A	1,388	4,867

Race	1 Mile	3 Miles	5 Miles
White	N/A	11,506	41,508
Black	N/A	220	652
Am In/AK Nat	N/A	2	18
Hawaiian	N/A	N/A	N/A
Hispanic	N/A	306	1,035
Multi-Racial	N/A	744	2,264

Income	1 Mile	3 Miles	5 Miles
Median	N/A	\$92,380	\$92,380
< \$15,000	N/A	151	513
\$15,000-\$24,999	N/A	201	513
\$25,000-\$34,999	N/A	140	594
\$35,000-\$49,999	N/A	365	1,327
\$50,000-\$74,999	N/A	688	2,954
\$75,000-\$99,999	N/A	519	2,437
\$100,000-\$149,999	N/A	1,296	3,911
\$150,000-\$199,999	N/A	393	1,649
> \$200,000	N/A	297	1,212

Housing	1 Mile	3 Miles	5 Miles
Total Units	N/A	4,070	14,917
Occupied	N/A	3,856	14,205
Owner Occupied	N/A	3,216	12,109
Renter Occupied	N/A	640	2,096
Vacant	N/A	214	712