

16185 LOS GATOS BLVD

Los Gatos, CA



±10,594 SF (DIVISIBLE) FOR LEASE
CENTRAL LOS GATOS LOCATION

ERIK HALLGRIMSON
(408) 615-3435
erik.hallgrimson@cushwake.com
Lic. #01274540

CLARK STEELE
408 436 3653
clark.steele@cushwake.com
LIC #01995379

KATE MYERS
(408) 502 0196
kate.myers@cushwake.com
Lic. #02253804



**CUSHMAN &
WAKEFIELD**

HIGHLIGHTS

- Rare 1st Floor Retail/Office/Medical
- High Visibility Location
- Excellent Signage
- Ample On-Site Parking
- Central Los Gatos Location
- Walk to Retail: King's Court & Lester Square
- Immediate Access to Hwy's 17 & 9
- Several Demising Options
- Available Now



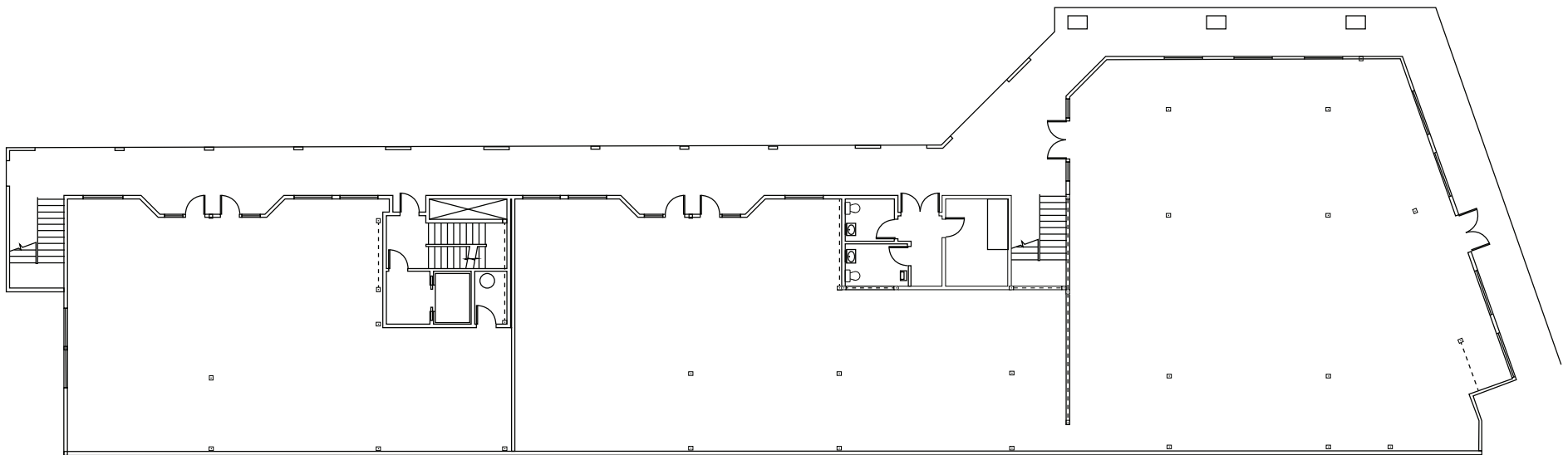
Located on bustling Los Gatos Blvd, this new listing benefits from prime visibility in one of Silicon Valley's most affluent and vibrant communities.

Los Gatos is home to over 2,500 businesses and nearly 35,000 residents, with a walkable, high-income population (average HH income of \$254,777, projected to reach \$281,706 by 2028). The town's thriving downtown and strong retail presence — over 15% of local businesses — make it a destination for upscale dining, shopping, and services.

With a highly educated workforce and strong employment in professional services, manufacturing, and health care, Los Gatos continues to offer exceptional market fundamentals for long-term commercial success.

FLOORPLAN

±10,594 SF (DIVISIBLE)



AMENITIES MAP





16185 LOS GATOS BLVD

Los Gatos, CA



±10,594 SF (DIVISIBLE) FOR LEASE | CENTRAL LOS GATOS LOCATION

ERIK HALLGRIMSON

(408) 615-3435

erik.hallgrimson@cushwake.com

Lic. #01274540

CLARK STEELE

408 436 3653

clark.steele@cushwake.com

LIC #01995379

KATE MYERS

(408) 502 0196

kate.myers@cushwake.com

Lic. #02253804



**CUSHMAN &
WAKEFIELD**

©2025 Cushman & Wakefield. All rights reserved. The information contained in this communication is strictly confidential. This information has been obtained from sources believed to be reliable but has not been verified. NO WARRANTY OR REPRESENTATION, EXPRESS OR IMPLIED, IS MADE AS TO THE CONDITION OF THE PROPERTY (OR PROPERTIES) REFERENCED HEREIN OR AS TO THE ACCURACY OR COMPLETENESS OF THE INFORMATION CONTAINED HEREIN, AND SAME IS SUBMITTED SUBJECT TO ERRORS, OMISSIONS, CHANGE OF PRICE, RENTAL OR OTHER CONDITIONS, WITHDRAWAL WITHOUT NOTICE, AND TO ANY SPECIAL LISTING CONDITIONS IMPOSED BY THE PROPERTY OWNER(S). ANY PROJECTIONS, OPINIONS OR ESTIMATES ARE SUBJECT TO UNCERTAINTY AND DO NOT SIGNIFY CURRENT OR FUTURE PROPERTY PERFORMANCE.