

A photograph of a commercial building with a dark blue, curved upper section and a brick lower section. The words "BIG LOTS!" are mounted on the blue section in large white letters, with the exclamation mark in orange. Below the sign is a large glass window reflecting the sky and trees. The brick section is on the right side of the image.

**BIG
LOTS!**

Representative Photo

FORMER BIG LOTS

28 WHITES CROSSING LANE, WHITEVILLE, NC 28472

FOR LEASE OR PURCHASE

The TSCG logo consists of the letters "TSCG" in a bold, orange, sans-serif font. It is positioned inside a dark grey square, which is itself set against a background of colorful, overlapping geometric shapes in shades of orange, red, and yellow.

TSCG

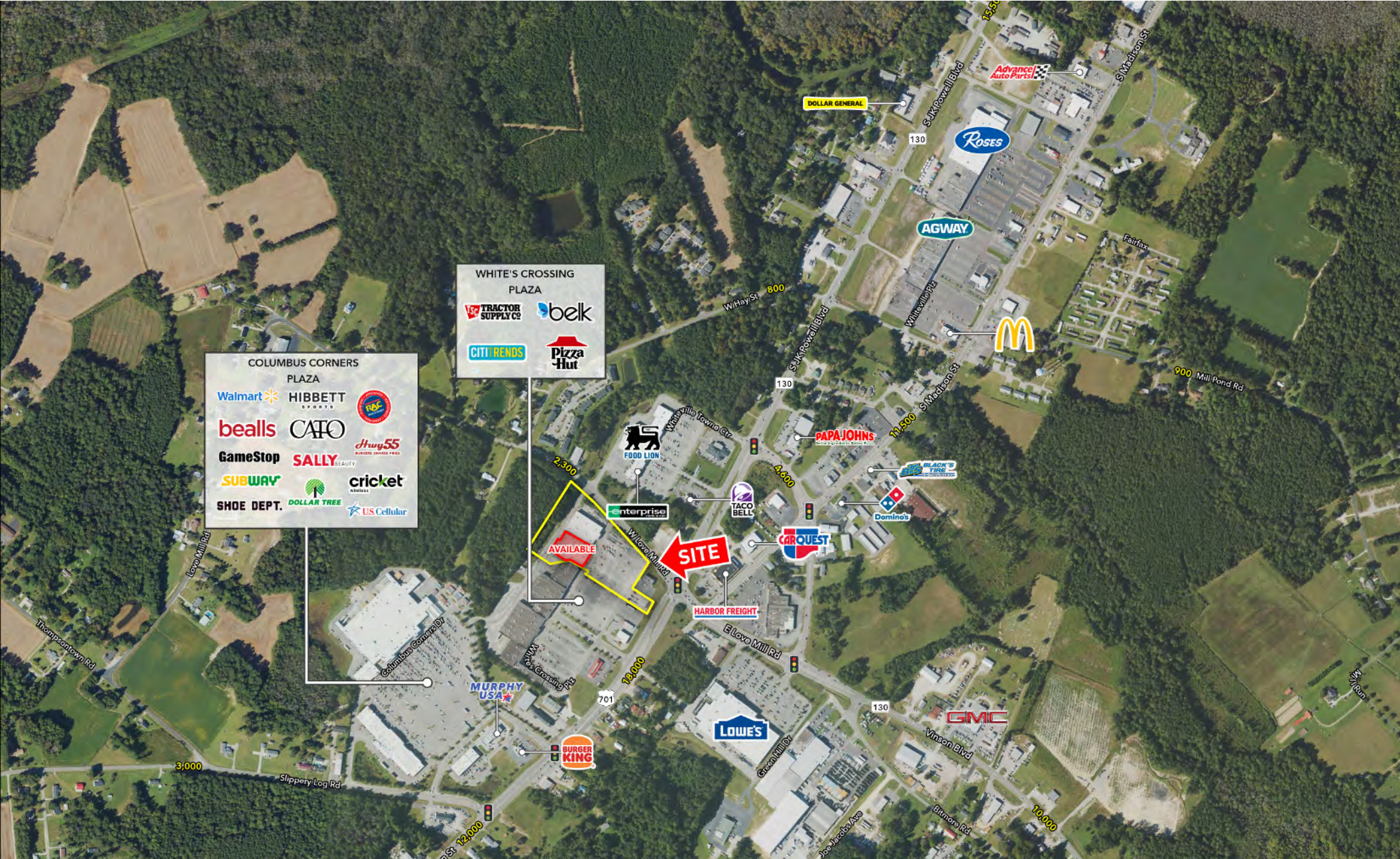
PROPERTY HIGHLIGHTS

- 40,000 SF former Big Lots box available for lease or purchase
- Located on W Love Mill Rd & S JK Powell Blvd.
- Traffic count on W Love Mill Rd: 2,300 AADT
- Traffic count on S JK Powell Blvd: 15,500 AADT
- Nearby Retailers: Tractor Supply Co, Belk, Citi Trends, Pizza Hut, Enterprise Rent-a-Car, Taco Bell, Walmart, GameStop, and more!

DEMOGRAPHICS

	1 MILE	3 MILES	5 MILES
2025 Total Population	629	7,403	12,170
2025 Daytime Population	1,674	5,890	7,691
2025 Median HH Income	\$42,885	\$40,620	\$44,813
2025 Households	301	3,091	5,032





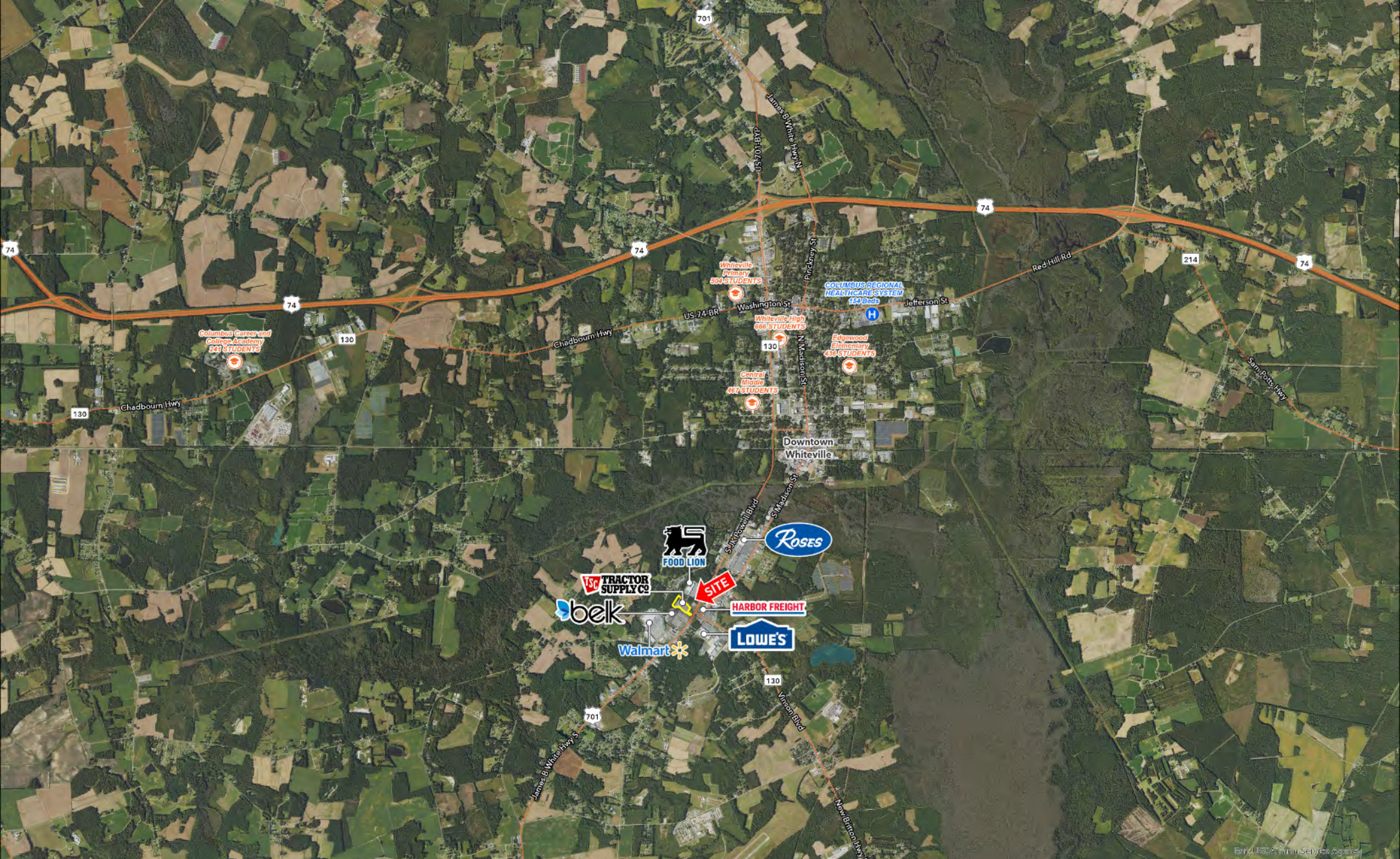
COLUMBUS CORNERS PLAZA

Walmart HIBBETT
bealls C&O
GameStop SALLY
SUBWAY cricket
SHOE DEPT. DOLLAR TREE
US Cellular

WHITE'S CROSSING PLAZA

TRACTOR SUPPLIES belk
CITI RENDS Pizza Hut

MIDAERIAL



AERIAL OVERVIEW



BIG LOTS!

Representative Photo

EXCLUSIVE AGENT(S):

JEFF NIMMER, CCIM

Jeff.Nimmer@tscg.com
984.960.3161

TYLER QUINN

Tyler.Quinn@tscg.com
984.960.3165

TAYLOR DROUILLARD

Taylor.Drouillard@tscg.com
984.960.3164

4601 SIX FORKS ROAD
SUITE 405
RALEIGH, NC 27609
919.268.8276
TSCG.COM

**TSCG**