



FERRERO PKWY

BENTON CT

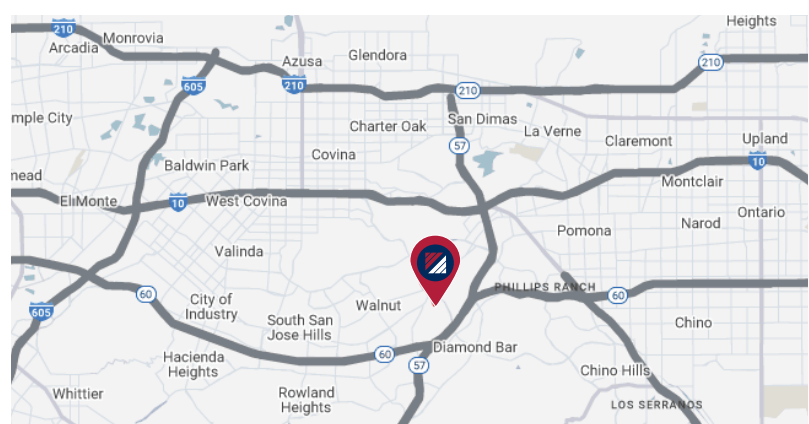
FOR LEASE

32,095 SF AVAILABLE

21717 FERRERO PARKWAY | CITY OF INDUSTRY | CA

PROPERTY HIGHLIGHTS:

- 32,095 SF - Free Standing Building
- 73,250 SF Lot
- 6,820 SF Office
- 24' Clear Height
- 4 Dock High Doors
- 1 Drive in Door
- Available 1/1/2025
- Landlord to provide existing racks



FOR MORE INFORMATION, PLEASE CONTACT:

NATHAN LARA, SIOR
Executive Vice President
P: 562.692.5983
nathan.lara@daumcre.com
CADRE #01923385

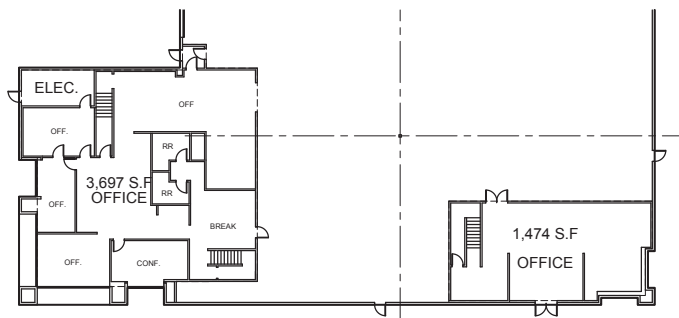
JACK NERSESIAN, MBA
Business Development Manager
P: 818.636.3460 | M: 818.636.3460
jack.nerseasian@daumcre.com
CADRE #01717556

ANDREW LARA, SIOR
Executive Vice President
P: 714.723.2626
alara@daumcre.com
CADRE #01820297

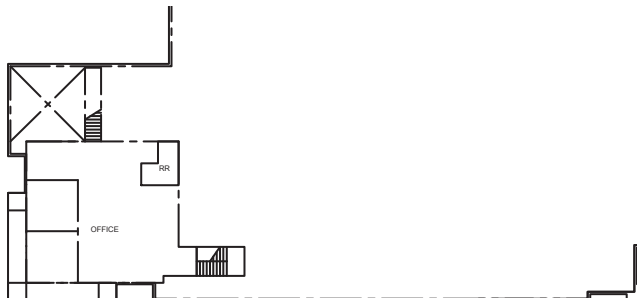


D/AQ Corp. #01129558. Maps Courtesy ©Google & ©Microsoft. Although all information is furnished regarding for sale, rental or financing is from sources deemed reliable, such information has not been verified and no express representation is made nor is any to be implied as to the accuracy thereof, and it is submitted subject to errors, omissions, changes of price, rental or other conditions, prior sale, lease or financing, or withdrawal without notice.

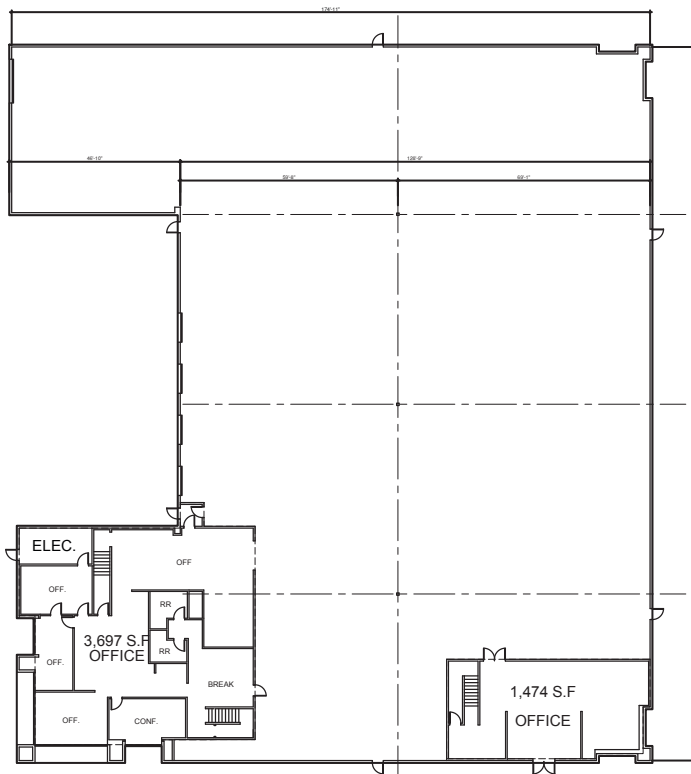
GROUND FLOOR OFFICE



MEZZANINE OFFICE



BUILDING PLAN



FOR MORE INFORMATION, PLEASE CONTACT:

NATHAN LARA, SIOR
Executive Vice President
P: 562.692.5983
nathan.lara@daumcre.com
CADRE #01923385

JACK NERSESIAN, MBA
Business Development Manager
P: 818.636.3460 | M: 818.636.3460
jack.nersestan@daumcre.com
CADRE #01717556

ANDREW LARA, SIOR
Executive Vice President
P: 714.723.2626
alara@daumcre.com
CADRE #01820297



LARA TEAM

FLOOR PLANS



FOR MORE INFORMATION, PLEASE CONTACT:

NATHAN LARA, SIOR
Executive Vice President
P: 562.692.5983
nathan.lara@daumcre.com
CADRE #01923385

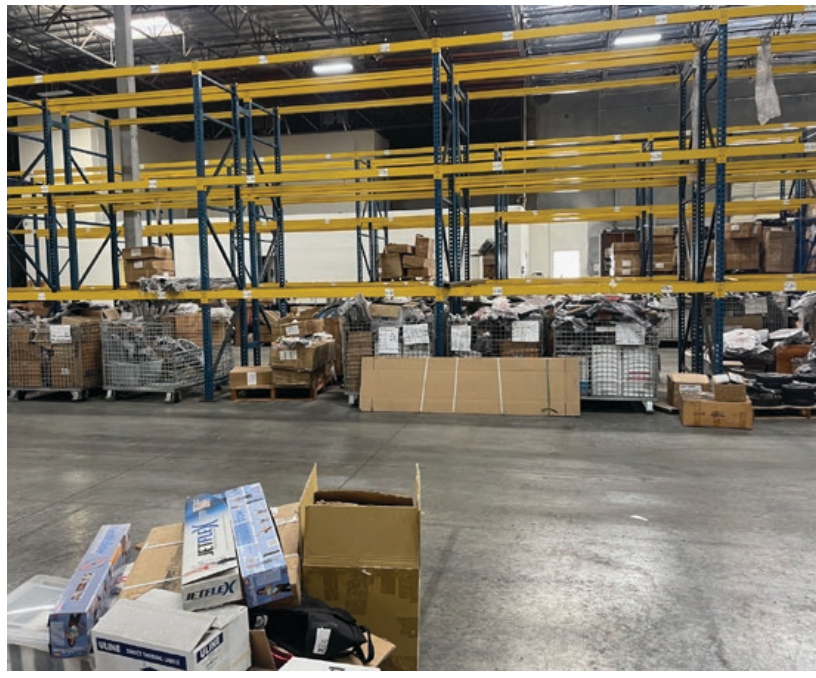
JACK NERSESIAN, MBA
Business Development Manager
P: 818.636.3460 | M: 818.636.3460
jack.nersejian@daumcre.com
CADRE #01717556

ANDREW LARA, SIOR
Executive Vice President
P: 714.723.2626
alara@daumcre.com
CADRE #01820297



LARA TEAM

AERIALS



FOR MORE INFORMATION, PLEASE CONTACT:

NATHAN LARA, SIOR
Executive Vice President
P: 562.692.5983
nathan.lara@daumcre.com
CADRE #01923385

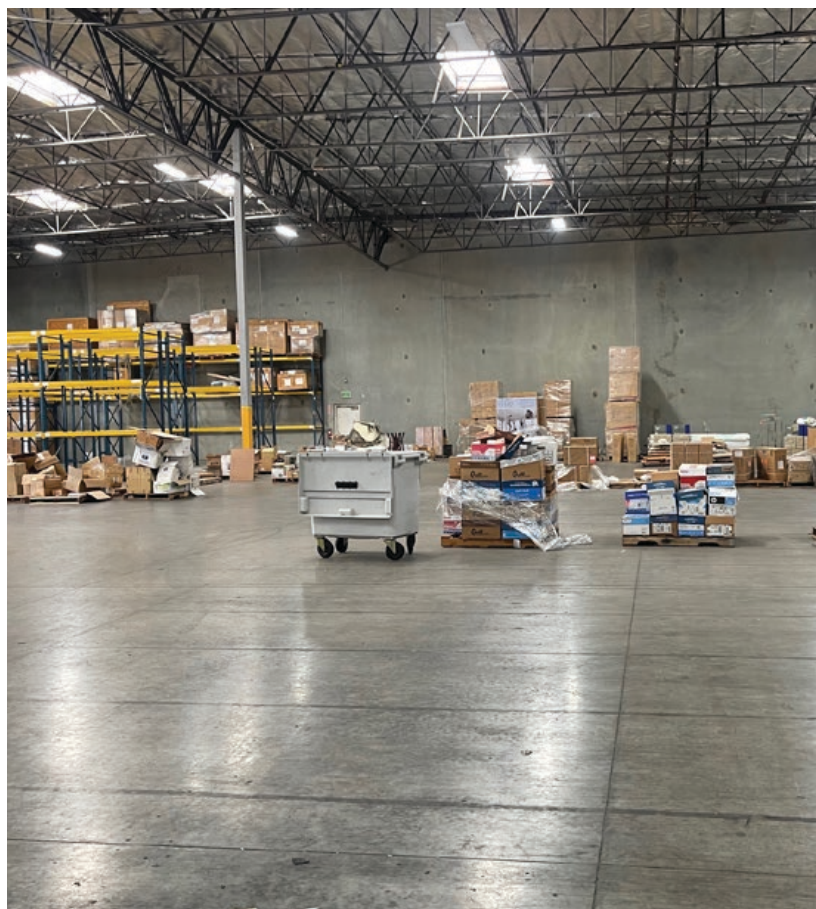
JACK NERSESIAN, MBA
Business Development Manager
P: 818.636.3460 | M: 818.636.3460
jack.nersejian@daumcre.com
CADRE #01717556

ANDREW LARA, SIOR
Executive Vice President
P: 714.723.2626
alara@daumcre.com
CADRE #01820297



LARA TEAM

PHOTOS



FOR MORE INFORMATION, PLEASE CONTACT:

NATHAN LARA, SIOR
Executive Vice President
P: 562.692.5983
nathan.lara@daumcre.com
CADRE #01923385

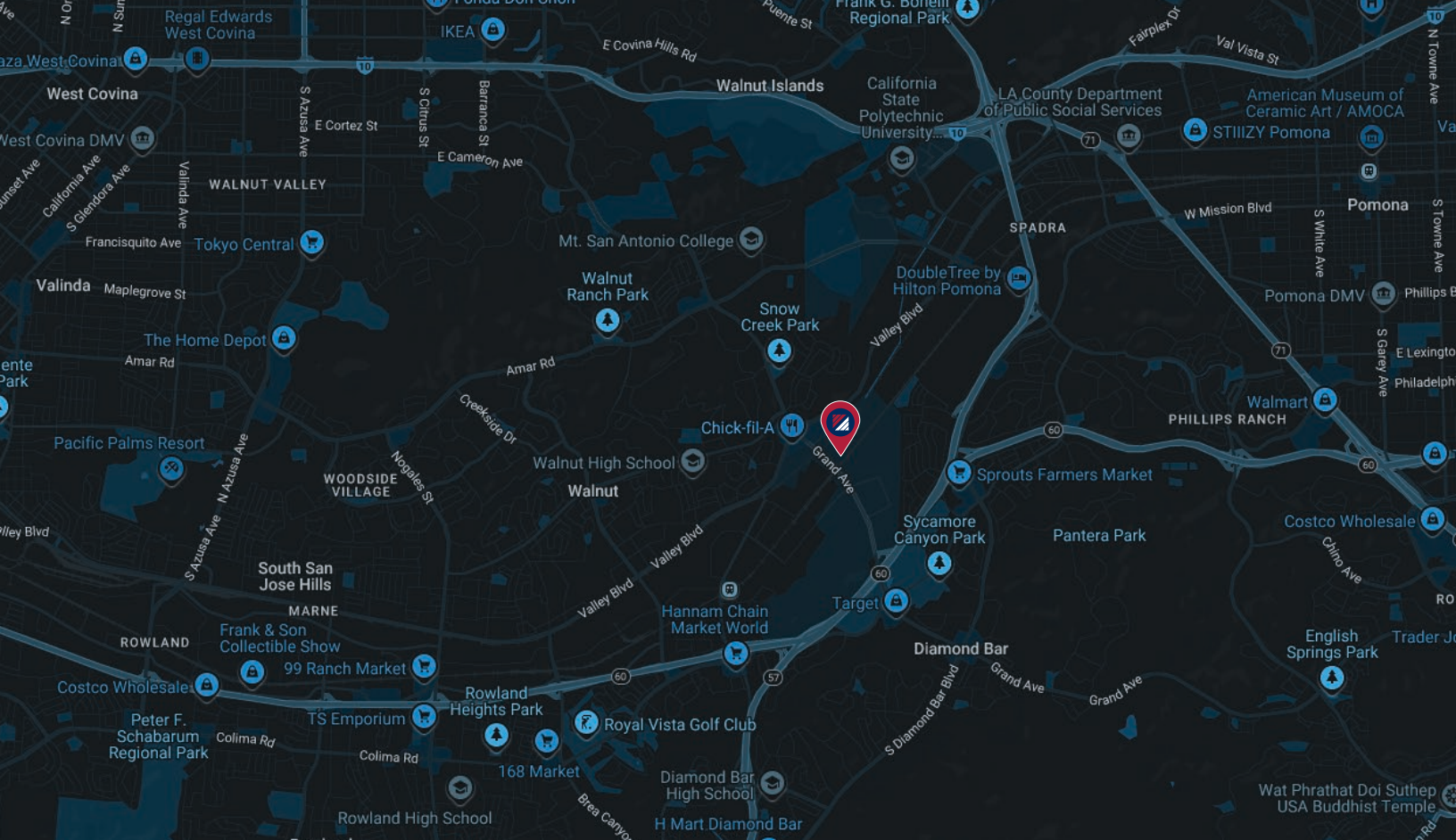
JACK NERSESIAN, MBA
Business Development Manager
P: 818.636.3460 | M: 818.636.3460
jack.nersejian@daumcre.com
CADRE #01717556

ANDREW LARA, SIOR
Executive Vice President
P: 714.723.2626
alara@daumcre.com
CADRE #01820297



LARA TEAM

PHOTOS



FOR MORE INFORMATION, PLEASE CONTACT:

NATHAN LARA, SIOR
 Executive Vice President
 P: 562.692.5983
 nathan.lara@daumcre.com
 CADRE #01923385

JACK NERSESIAN, MBA
 Business Development Manager
 P: 818.636.3460 | M: 818.636.3460
 jack.nersestan@daumcre.com
 CADRE #01717556

ANDREW LARA, SIOR
 Executive Vice President
 P: 714.723.2626
 alara@daumcre.com
 CADRE #01820297



LOCATION MAP

LARA TEAM