



Keegan & Coppin
COMPANY, INC.

FOR LEASE

BON AIR
GREENBRAE, CA

RETAIL & OFFICE SPACE
FOR LEASE



Go beyond broker.

REPRESENTED BY:

VESA BECAM, PARTNER
LIC # 01459190 (415) 461-1010, EXT 114
VESA@KEEGANCOPPIN.COM



RETAIL & OFFICE SPACE FOR LEASE



BON AIR
GREENBRAE, CA

RETAIL FOR LEASE

PROPERTY INFORMATION

HIGHLIGHTS

- BEST LOCATION IN MARIN COUNTY

DESCRIPTION OF PREMISES

Bon Air represents an exceptional opportunity to lease retail space in the most sought-after location in Marin County, featuring popular restaurants, boutiques, financial services and fitness opportunities. Bon Air's welcoming outdoor spaces and spectacular Mt. Tam views provide a sense of place for special events and the community. Bon Air is Greenbrae's gathering place for shopping, dining, playing and relaxing. Choose from 50 specialty merchants, family-friendly restaurants and essential services conveniently located in the heart of Marin. For more than 70 years, Bon Air's welcoming outdoor spaces and spectacular Mt. Tam views have provided a sense of place for special events and the community. Local roots. Local spirit.

DESCRIPTION OF AREA

The Sir Francis Drake corridor is at the commercial core of Marin County. At the confluence of several major transportation axes, both local and regional, the area is a hub of local infrastructure and business. Two major interstate freeways, highways 101 and 580, intersect at Sir Francis Drake Boulevard, which is also the principal artery linking the SF Bay Area to the Pacific coast. The Golden Gate Larkspur Ferry and Golden Gate Transit provide regular service to downtown San Francisco for commuters and visitors, and the SMART train station provides a transportation link between North Bay counties and San Francisco. Less than five minutes from the property, MarinHealth Medical Center is the only full-service acute care hospital in the County, and its sphere of influence extends throughout Greenbrae and Corte Madera, creating a cluster of medical providers in the South Eliseo and Tamal Vista corridors. This area enjoys a high concentration of retail activity, with Marin County's malls in immediate vicinity.

DEMOGRAPHICS

	1 Mile	3 Miles	5 Miles
Total Population:	12,747	82,815	153,605
Median Household Income:	\$130,903	\$125,062	\$132,166
Average Age:	46	42	43
Median Home Value:	\$1,069,067	\$1,067,415	\$1,043,521

LEASE TERMS

Size

722 - 6,138+/- rentable sq ft

Use

Retail/Office

Rate

Inquire for pricing

Terms

Minimum 5-year lease term

Parking

On-site

Zoning

PD

Keegan & Coppin Co., Inc.
101 Larkspur Landing Circle, Ste. 112
Larkspur, CA 94939
www.keegancoppin.com
(415) 461-1010

REPRESENTED BY:

VESA BECAM, PARTNER
LIC # 01459190 (415) 461-1010, EXT 114
VESA@KEEGANCOPPIN.COM

The above information, while not guaranteed, has been secured from sources we believe to be reliable. Submitted subject to error, change or withdrawal. An interested party should verify the status of the property and the information herein.



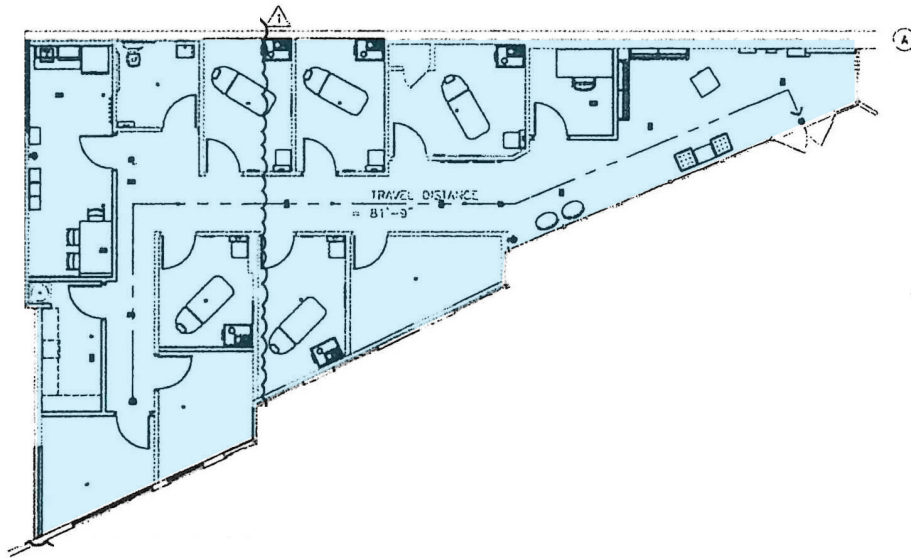
RETAIL SPACE FOR LEASE



BON AIR
GREENBRAE, CA

RETAIL FOR LEASE

SPACE 200
AVAILABLE
1,915+/- SQ. FT.



REPRESENTED BY: VESA BECAM, PARTNER
LIC # 01459190 (415) 461-1010, EXT 114
VESA@KEEGANCOPPIN.COM

The above information, while not guaranteed, has been secured from sources we believe to be reliable. Submitted subject to error, change or withdrawal. An interested party should verify the status of the property and the information herein.

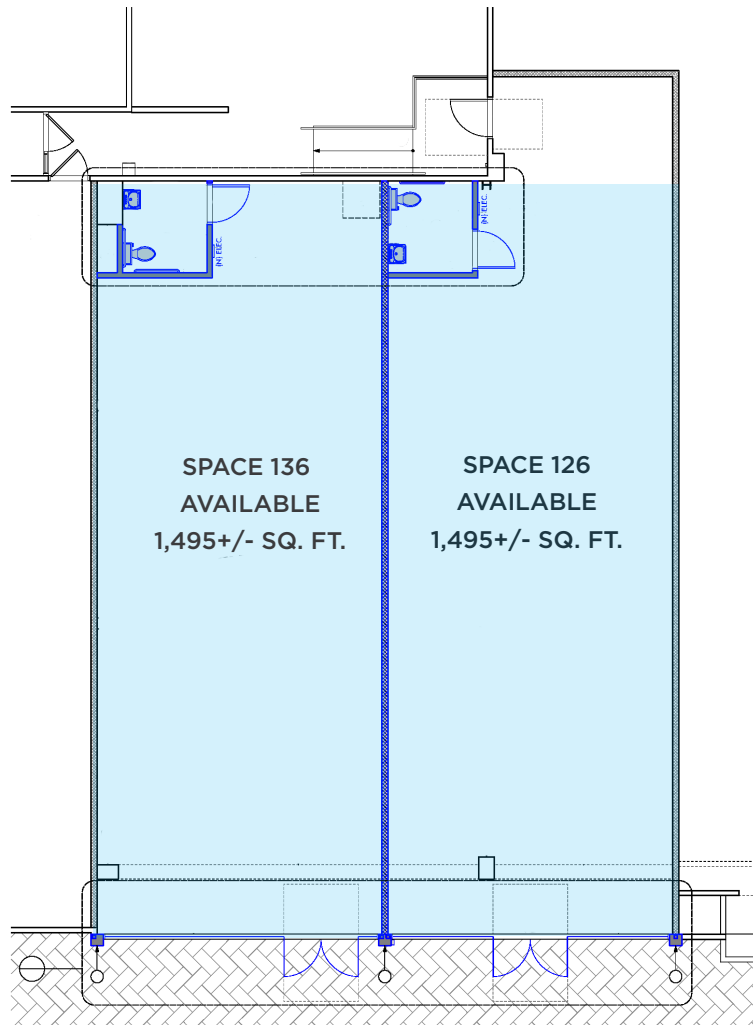


RETAIL SPACE FOR LEASE



BON AIR
GREENBRAE, CA

RETAIL FOR LEASE



REPRESENTED BY: VESA BECAM, PARTNER
LIC # 01459190 (415) 461-1010, EXT 114
VESA@KEEGANCOPPIN.COM

The above information, while not guaranteed, has been secured from sources we believe to be reliable. Submitted subject to error, change or withdrawal. An interested party should verify the status of the property and the information herein.

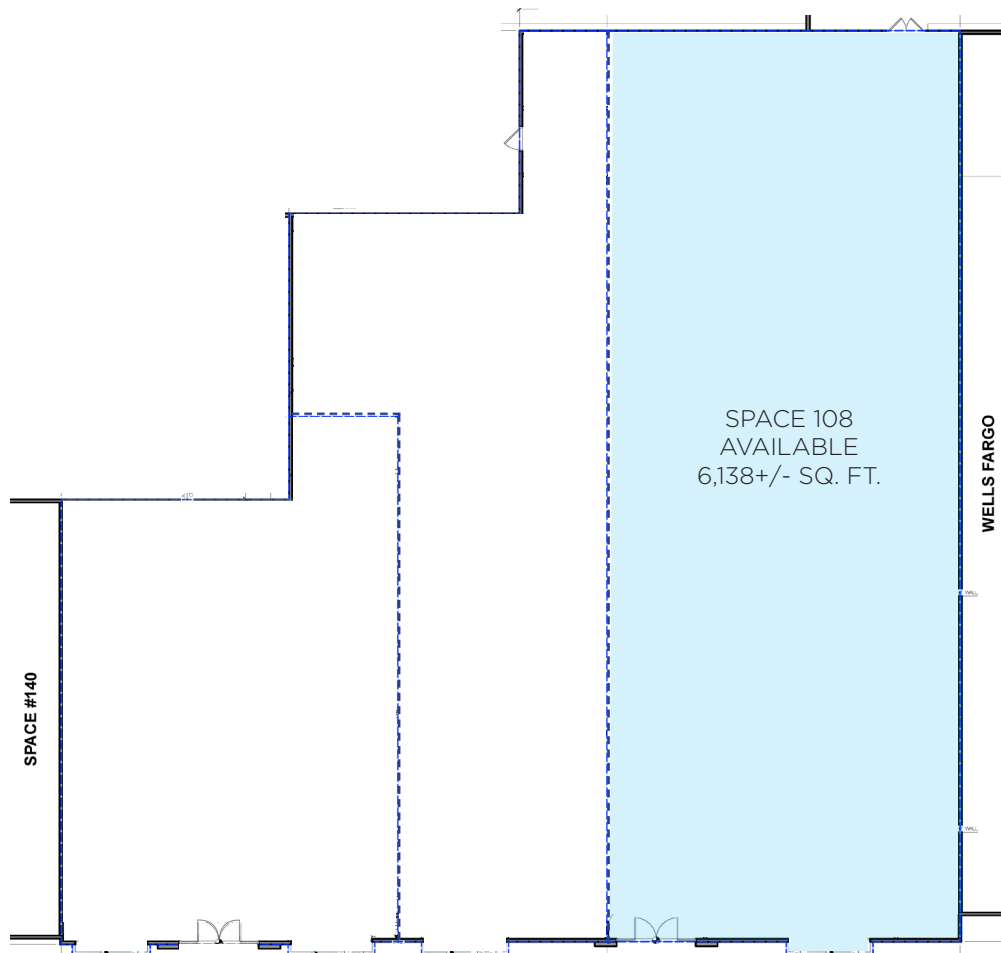


RETAIL SPACE FOR LEASE



BON AIR
GREENBRAE, CA

RETAIL FOR LEASE



REPRESENTED BY: VESA BECAM, PARTNER
LIC # 01459190 (415) 461-1010, EXT 114
VESA@KEEGANCOPPIN.COM

The above information, while not guaranteed, has been secured from sources we believe to be reliable. Submitted subject to error, change or withdrawal. An interested party should verify the status of the property and the information herein.



SITE PLAN

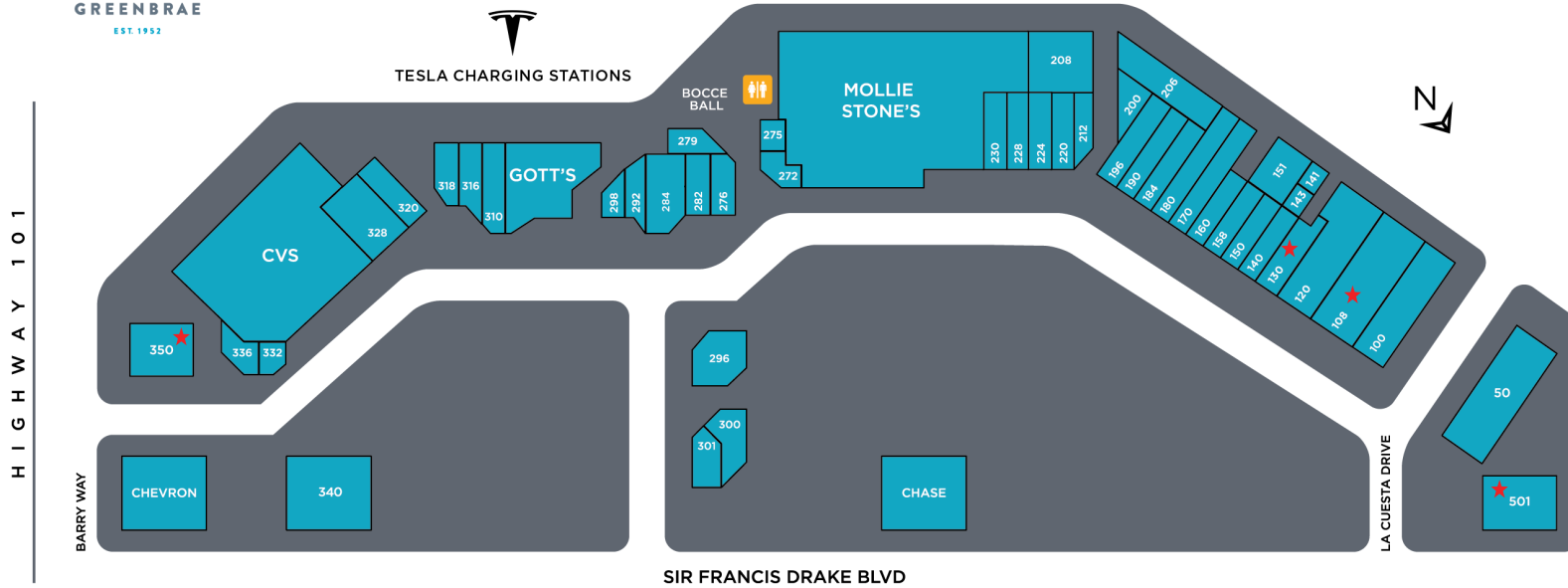


BON AIR
GREENBRAE, CA

RETAIL FOR LEASE

BON AIR

GREENBRAE
EST. 1952



REPRESENTED BY: VESA BECAM, PARTNER
LIC # 01459190 (415) 461-1010, EXT 114
VESA@KEEGANCOPPIN.COM

The above information, while not guaranteed, has been secured from sources we believe to be reliable. Submitted subject to error, change or withdrawal. An interested party should verify the status of the property and the information herein.



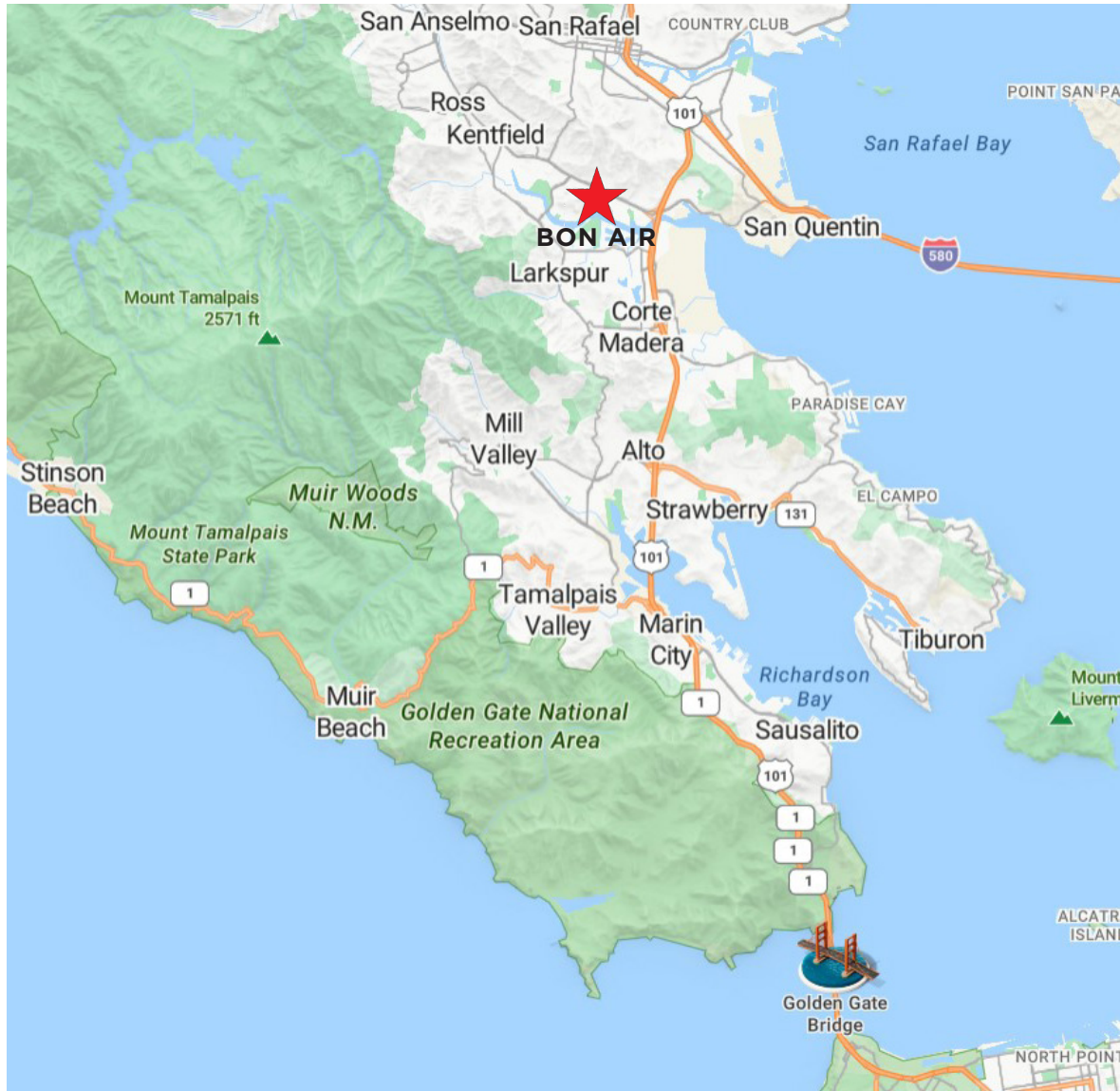
MAPS



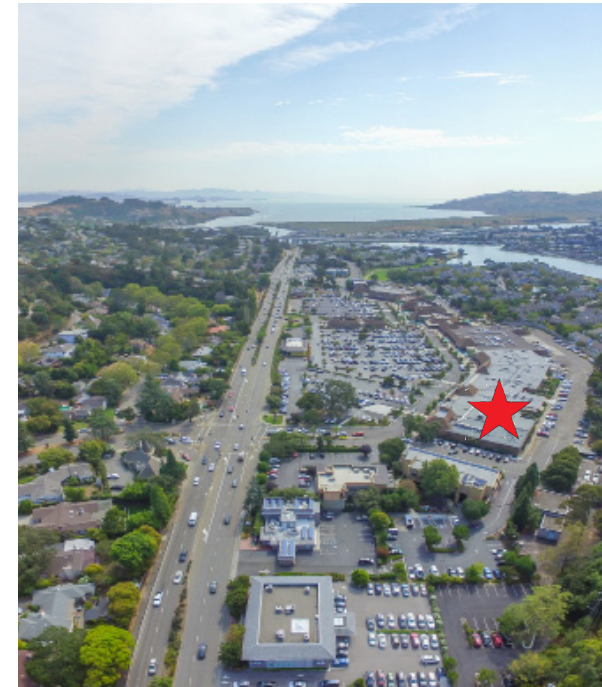
BON AIR
GREENBRAE, CA

RETAIL FOR LEASE

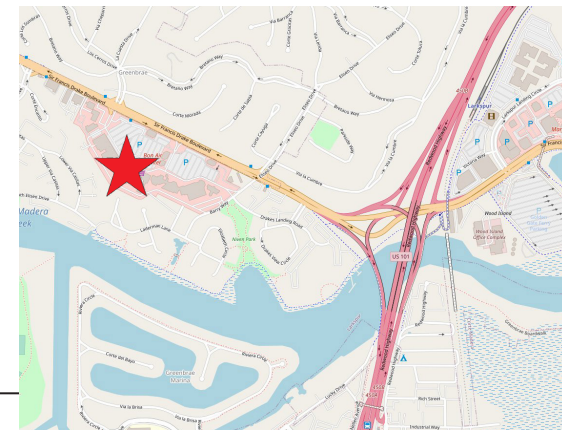
MARIN COUNTY 101 CORRIDOR



AERIAL MAP



VICINITY MAP



REPRESENTED BY: VESA BECAM, PARTNER
LIC # 01459190 (415) 461-1010, EXT 114
VESA@KEEGANCOPPIN.COM

The above information, while not guaranteed, has been secured from sources we believe to be reliable. Submitted subject to error, change or withdrawal. An interested party should verify the status of the property and the information herein.

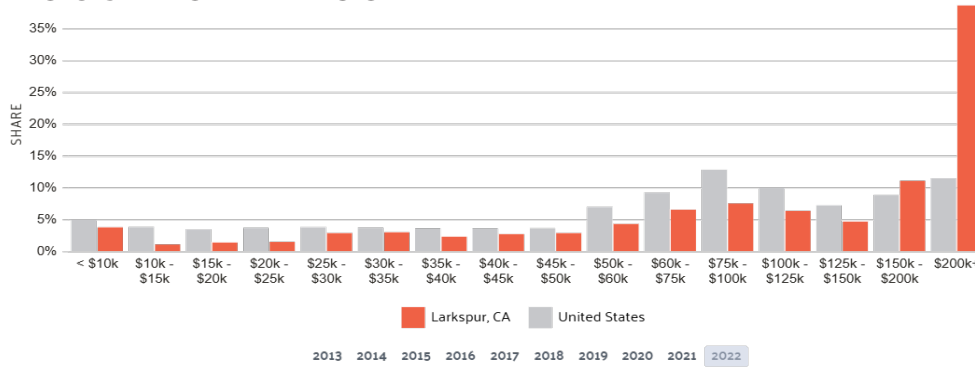


REGIONAL SNAPSHOT



BON AIR
GREENBRAE, CA
RETAIL FOR LEASE

HOUSEHOLD INCOME



MAJOR EMPLOYERS

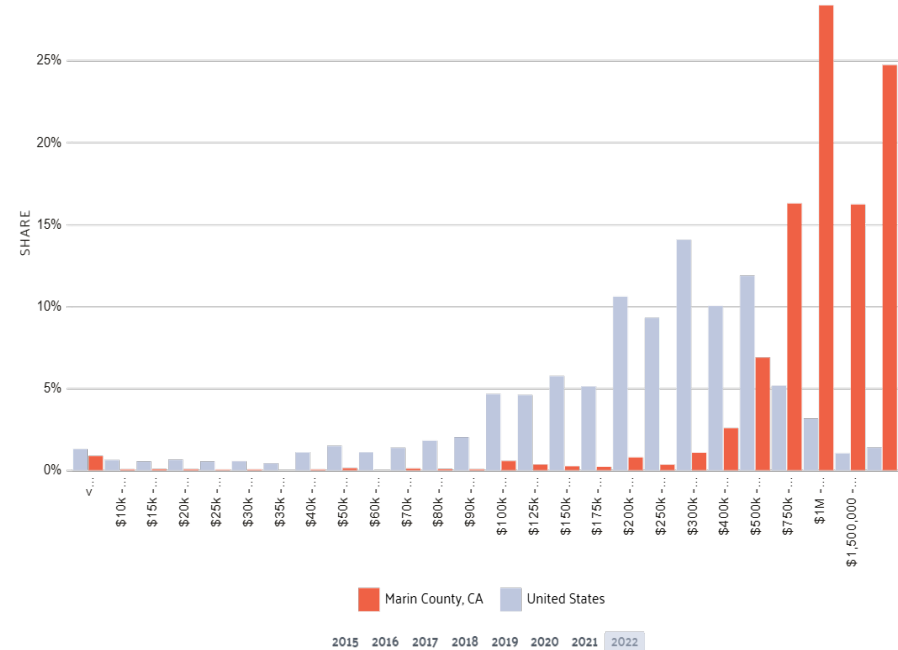


EMPLOYMENT BY INDUSTRY

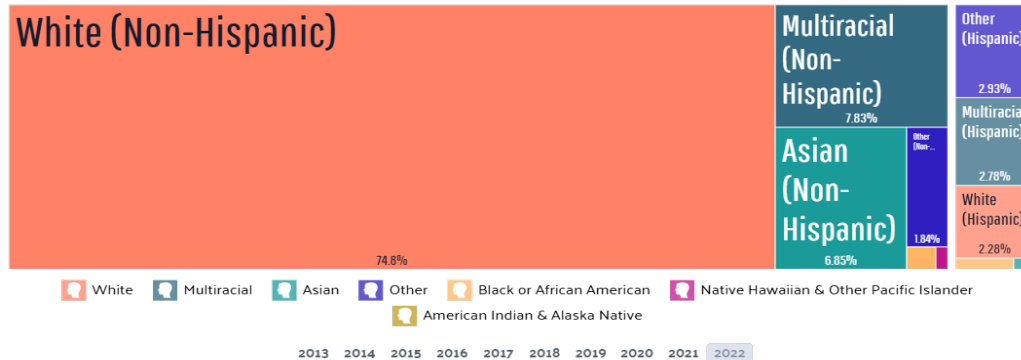
6,856 workers



PROPERTY VALUE



DIVERSITY



REPRESENTED BY:

VESA BECAM, PARTNER
LIC # 01459190 (415) 461-1010, EXT 114
VESA@KEEGANCOPPIN.COM

The above information, while not guaranteed, has been secured from sources we believe to be reliable. Submitted subject to error, change or withdrawal. An interested party should verify the status of the property and the information herein.