

# Office/Studio Space For Lease

## 3307 Clifton Avenue Cincinnati (Clifton)



### FEATURES

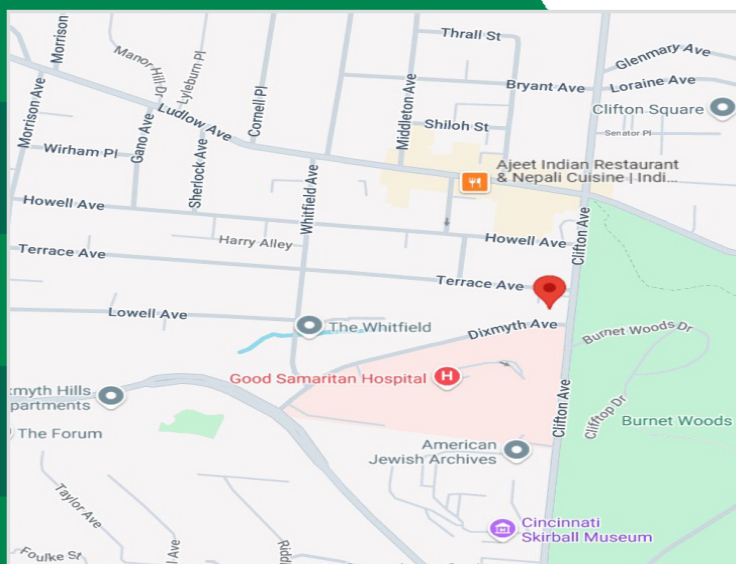
- **850 - 6,400 Total Sq. Ft. Available**
- Great Studio Space
- On bus-line
- Walking distance to Clifton Business District
- Free, off street parking
- Minutes from UC, H.U.C., Hospitals, Downtown Cincinnati, I-75

### LOCATION

**3307 Clifton Avenue**  
**Cincinnati (Clifton), OH 45220**  
**Corner of Clifton & Dixmyth Avenues**

### CONTACT

**Mark Freiberg, CCIM**  
mfreiberg@everestrealstate.com  
D 513/769-2502  
C 513/886-3303



The information submitted is not guaranteed. Although obtained from reliable sources, it is subject to errors, omissions, prior sale and withdrawal from the market without notice.



**COMMERCIAL REAL ESTATE SERVICES**

WEB [www.everestrealstate.com](http://www.everestrealstate.com) TEL 513-769-2500 FAX 513-769-2512

9902 Carver Road, Sycamore Office Park, Suite 105, Cincinnati, Ohio 45242



# 3307 Clifton Avenue



Eat-In Break Area



Distinctive Architectural Features - Lounge-Area



Bullpen Area



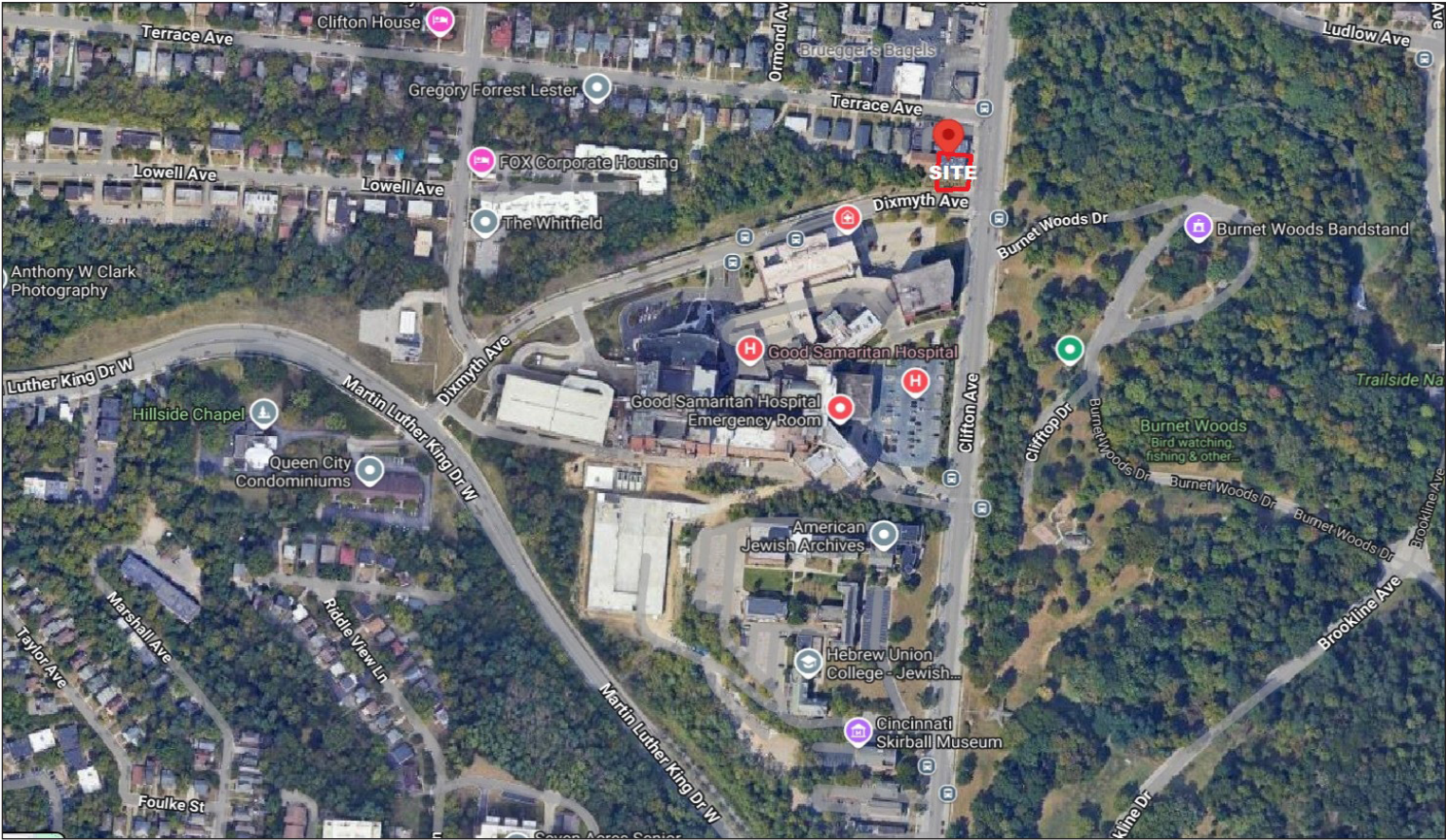
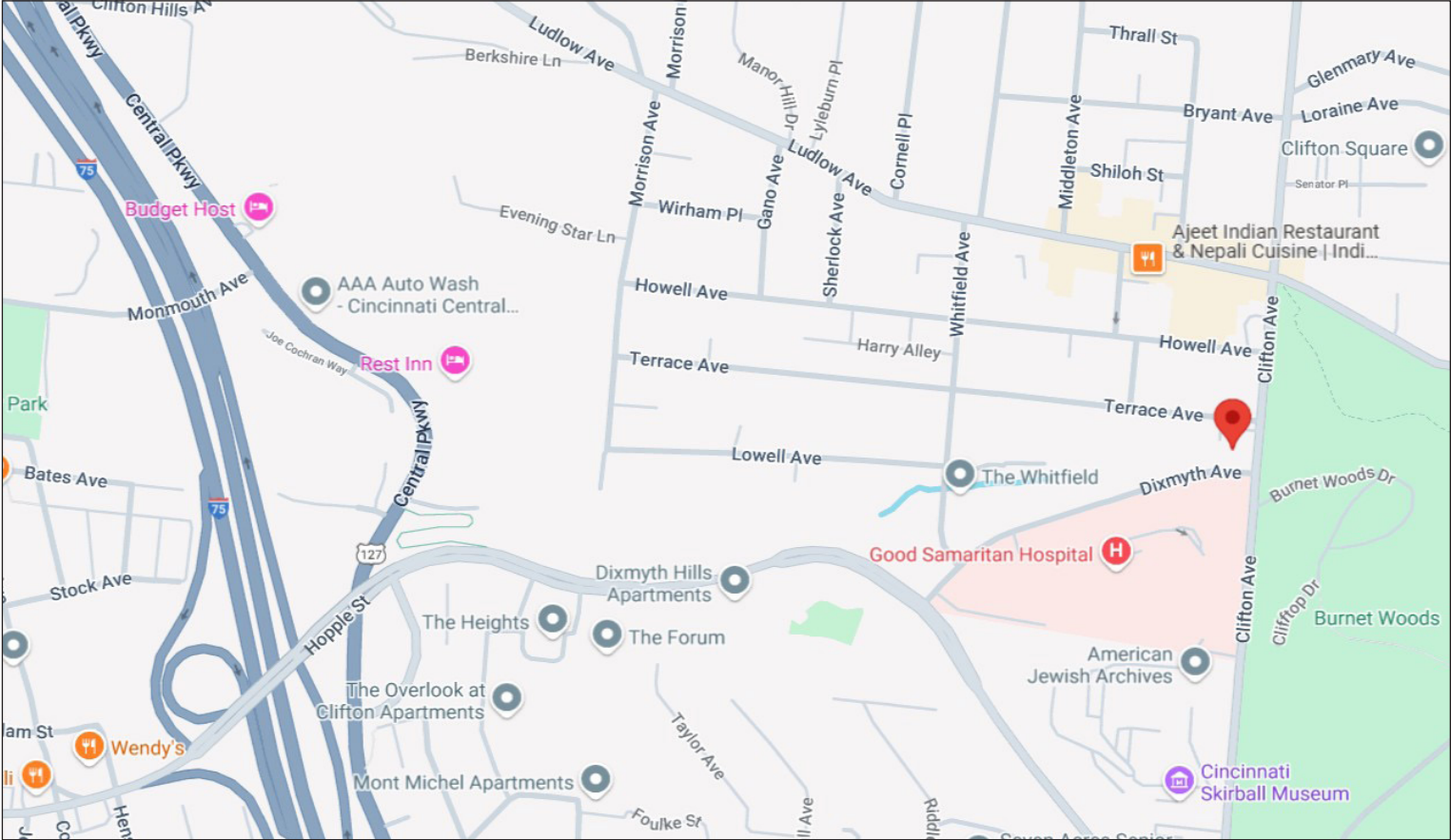
Bullpen Area

FOR MORE INFORMATION, CONTACT

**Mark Freiberg, CCIM**  
mfreiberg@everestrealstate.com  
D 513/769-2502  
C 513/886-3303



# 3307 Clifton Avenue





# 3307 Clifton Avenue

