

7678 QUARTERFIELD RD.
GLEN BURNIE, MD

7678 Quarterfield

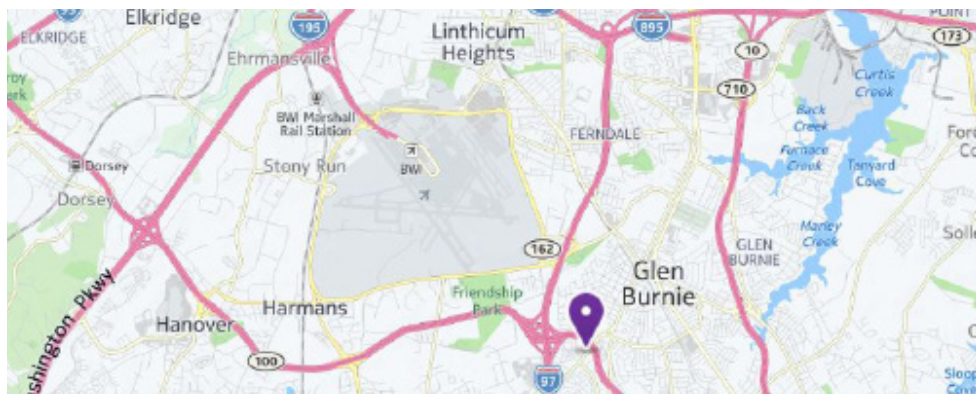
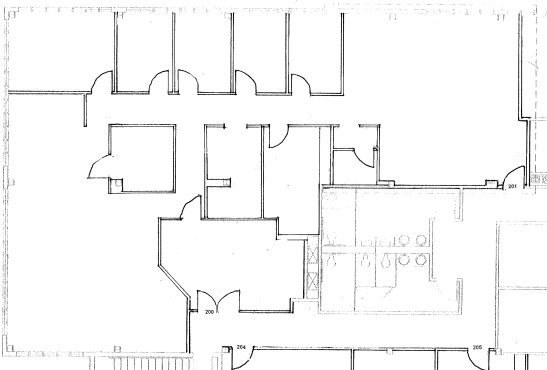
LEASE

Medical/Professional Office Move-in Ready Condition

- C-2 zoning, general office and medical use.
- Suite 201- 3,613 sqft, 2nd flr, 7 offices, conf rm large open space, can be demized
- Suite 102 - 800 sqft, office, conf, receipt, bathroom
- Close to BWMC and nearby medical offices
- Lease Rate-\$17.50 SF, 2nd floor; \$20.00/SF, 1st fl



LISA DAVISSON
Commercial Salesperson
410-449-1146
LDavisson@friendre.com



Main: 410-449-1144 · Fax: 410-983-3956 · friendre.com
8436 Veterans Hwy, Millersville, MD 21108

All information is from sources deemed reliable; However, we are not responsible for errors, omissions, misinterpretation, or misuse of information presented; We make no warranty of any kind, express or implied, with respect to the property or any other matters; Information and the property is subject to change, corrections, prior sales, or withdrawal.