

CVCB



CENTRAL
VALLEY
COMMERCIAL
BROKERS, INC

FOR LEASE

626/630 Main St. Delano, CA



Property Details

- \$1.10/sq ft NNN
- The owner is currently redoing landscaping
- APN: 038-310-26
- Ample on-site parking spaces
- Located in Downtown Delano, 2nd largest city in Kern County

626 Main St.

- 3,060 sq ft Medical Office
- 6 exam rooms, 2 admin offices, 1 large doctor's office
- Breakroom, admin reception area, and lobby

HENRY E. MENDEZ, JR.

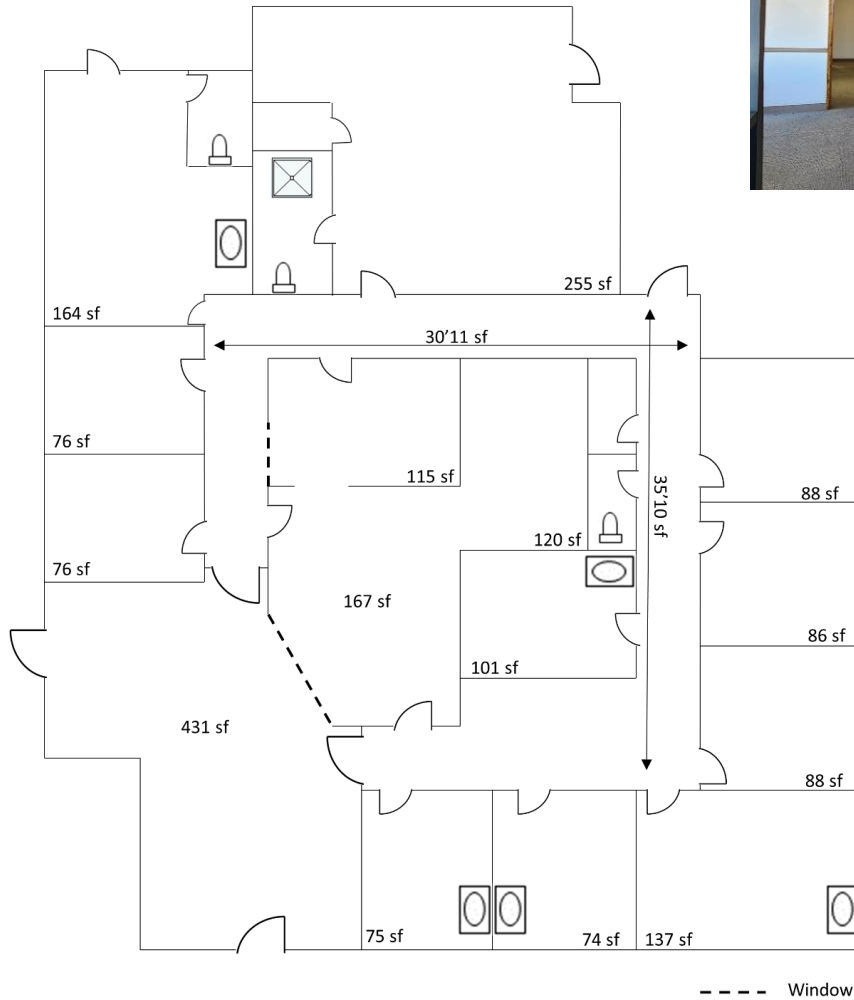
CA RE #01127054 CA DRE #02084340 • Broker/ Principal
hmendez@cvcbrokers.com • 661.404.4090 Office
930 Truxtun Ave., Suite 101, Bakersfield, CA 93301

The information contained herein may have been obtained from sources other than CVCB. We have not verified such information and make no guarantees, warranties, or representations about such information. It is your responsibility to independently confirm its accuracy and completeness prior to purchasing/leasing the property.



FOR LEASE

626 Main St. Delano, CA



HENRY E. MENDEZ, JR.

CA RE #01127054 CA DRE #02084340 • Broker/ Principal

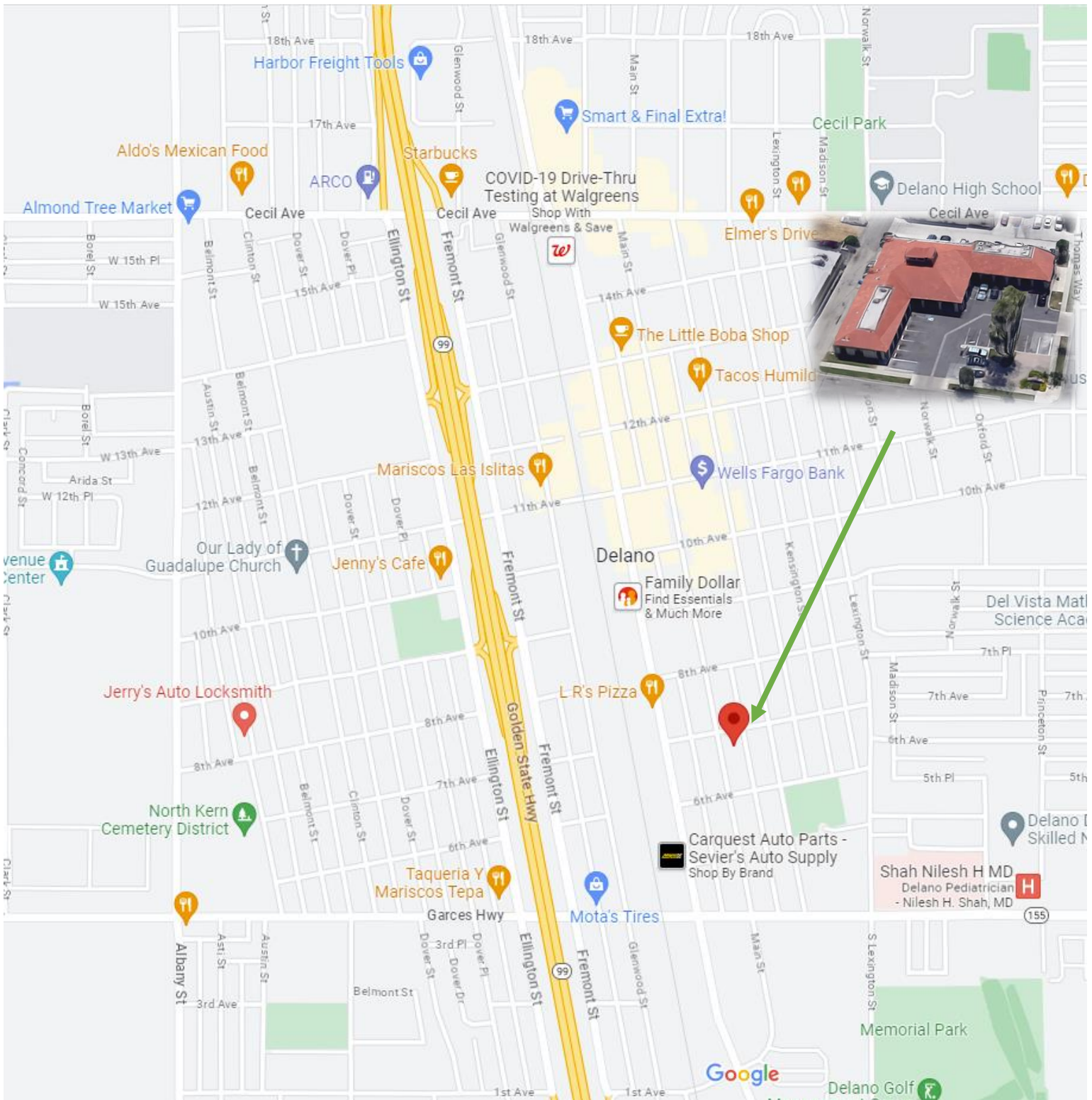
hmendez@cvcbrokers.com • 661.404.4090 Office

930 Truxtun Ave., Suite 101, Bakersfield, CA 93301

The information contained herein may have been obtained from sources other than CVCB. We have not verified such information and make no guarantees, warranties, or representations about such information. It is your responsibility to independently confirm its accuracy and completeness prior to purchasing/leasing the property.

FOR LEASE

626 Main St. Delano, CA



HENRY E. MENDEZ, JR.

CA RE #01127054 CA DRE #02084340 • Broker/ Principal

hmendez@cvcbrokers.com • 661.404.4090 Office

930 Truxtun Ave., Suite 101, Bakersfield, CA 93301

The information contained herein may have been obtained from sources other than CVCB. We have not verified such information and make no guarantees, warranties, or representations about such information. It is your responsibility to independently confirm its accuracy and completeness prior to purchasing/leasing the property.