

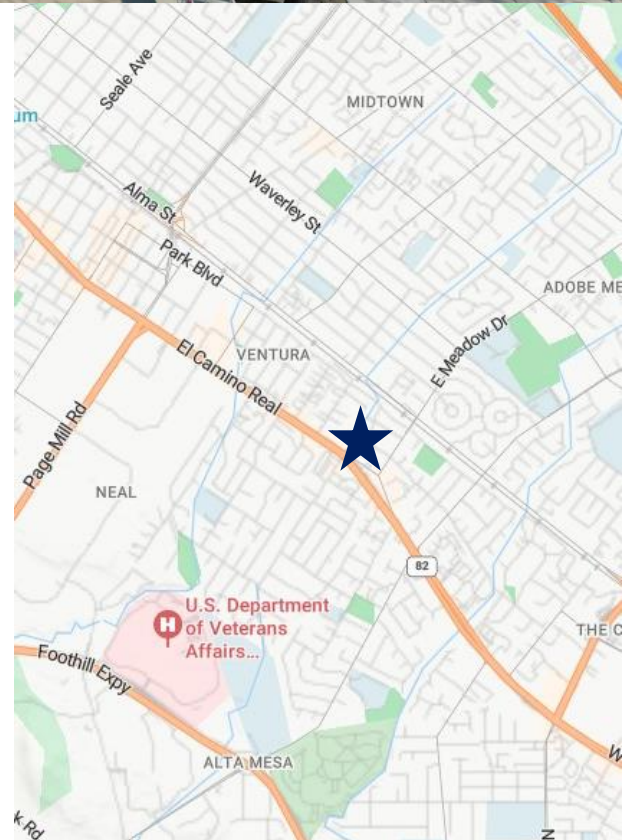
FOR LEASE

3939 El Camino Real
Palo Alto, CA 94306



FOR LEASE: +/-2,750 SF Auto Repair Facility

Address	3939 El Camino Real Palo Alto, CA 94306
GBA	+/- 2,500 SF
Site Size	+/- 7,840 SF
Zoning	CS, Service Commercial
Current Use	Auto Repair
Loading	2 Grade Doors
Lifts	2 Electric and 1 Hydraulic
HVAC	Heat in Warehouse
Parking	14 Spaces
Traffic Counts	51,000 Vehicles Per Day
Asking Rate	\$3.00 PSF Triple Net



Joshua Johnson
Cell (650) 208-5282
joshua.johnson@marcusmillichap.com
License: CA 01930127

Marcus & Millichap

FOR LEASE

3939 El Camino Real
Palo Alto, CA 94306

Permitted Uses – Service Commercial

- Banks and Financial services
- Private Educational Facilities
- Professional and General Office
- Retail Services
- Liquor Stores
- Eating and Drinking Services
- Day Care Facilities
- Animal Care
- Convalescent Facilities
- Personal Services
- Adult Day Care Homes
- Private Clubs and Fraternal Organizations
- Administrative Office Services
- Churches and Religious Facilities
- Business and Trade Schools
- Auto Repair (Conditional Use)



Joshua Johnson
Cell (650) 208-5282
joshua.johnson@marcusmillichap.com
License: CA 01930127

Marcus & Millichap

FOR LEASE

**3939 El Camino Real
Palo Alto, CA 94306**

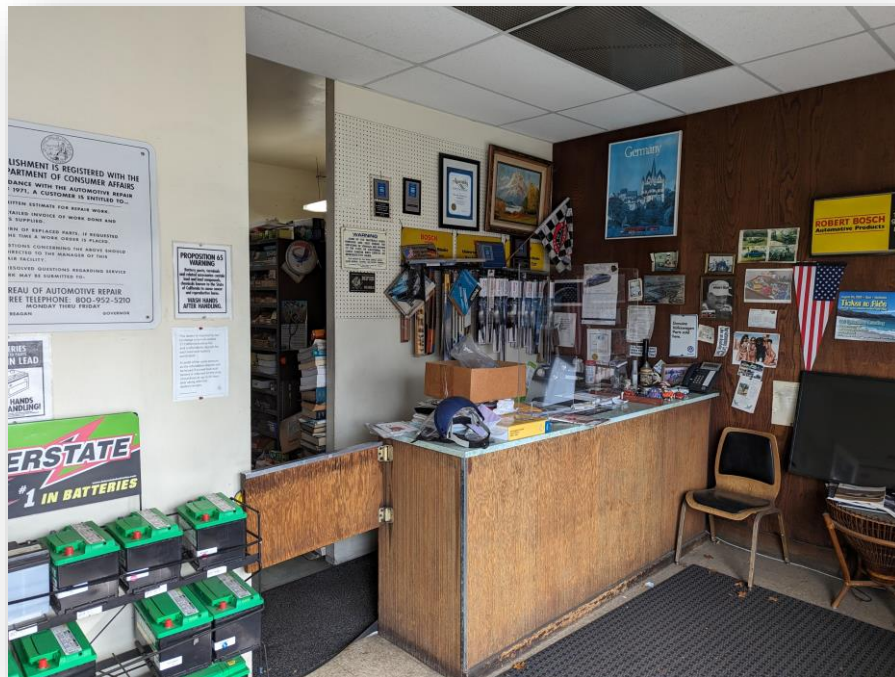


Joshua Johnson
Cell (650) 208-5282
joshua.johnson@marcusmillichap.com
License: CA 01930127

Marcus & Millichap

FOR LEASE

3939 El Camino Real
Palo Alto, CA 94306



Joshua Johnson
Cell (650) 208-5282
joshua.johnson@marcusmillichap.com
License: CA 01930127

Marcus & Millichap

FOR LEASE

3939 El Camino Real
Palo Alto, CA 94306



Joshua Johnson
Cell (650) 208-5282
joshua.johnson@marcusmillichap.com
License: CA 01930127

Marcus & Millichap

Demographic Summary

POPULATION	1 Mile	3 Miles	5 Miles
2027 Projection			
Total Population	23,273	150,856	297,041
2022 Estimate			
Total Population	22,536	144,932	286,351
2010 Census			
Total Population	21,311	131,312	261,780
2000 Census			
Total Population	20,372	125,002	251,298
Daytime Population			
2022 Estimate	50,112	225,328	469,789
HOUSEHOLDS	1 Mile	3 Miles	5 Miles
2027 Projection			
Total Households	9,340	58,549	113,055
2022 Estimate			
Total Households	9,098	56,234	109,119
Average (Mean) Household Size	2.5	2.4	2.5
2010 Census			
Total Households	8,543	51,090	99,983
2000 Census			
Total Households	8,678	49,652	97,268
HOUSEHOLDS BY INCOME	1 Mile	3 Miles	5 Miles
2022 Estimate			
\$150,000 or More	57.7%	51.2%	52.6%
\$100,000 - \$149,000	14.3%	14.5%	14.8%
\$75,000 - \$99,999	6.4%	7.0%	7.0%
\$50,000 - \$74,999	7.5%	8.4%	8.4%
\$35,000 - \$49,999	5.2%	6.3%	6.2%
Under \$35,000	8.8%	12.7%	11.1%
Average Household Income	\$239,794	\$219,265	\$223,776
Median Household Income	\$183,655	\$154,760	\$159,899
Per Capita Income	\$96,994	\$86,197	\$85,974