

*Crowne  
Oak Centre*



3 Available Move-In Ready Spaces  
from 1,276 SF to 1,581 SF

CALL FOR  
DETAILS

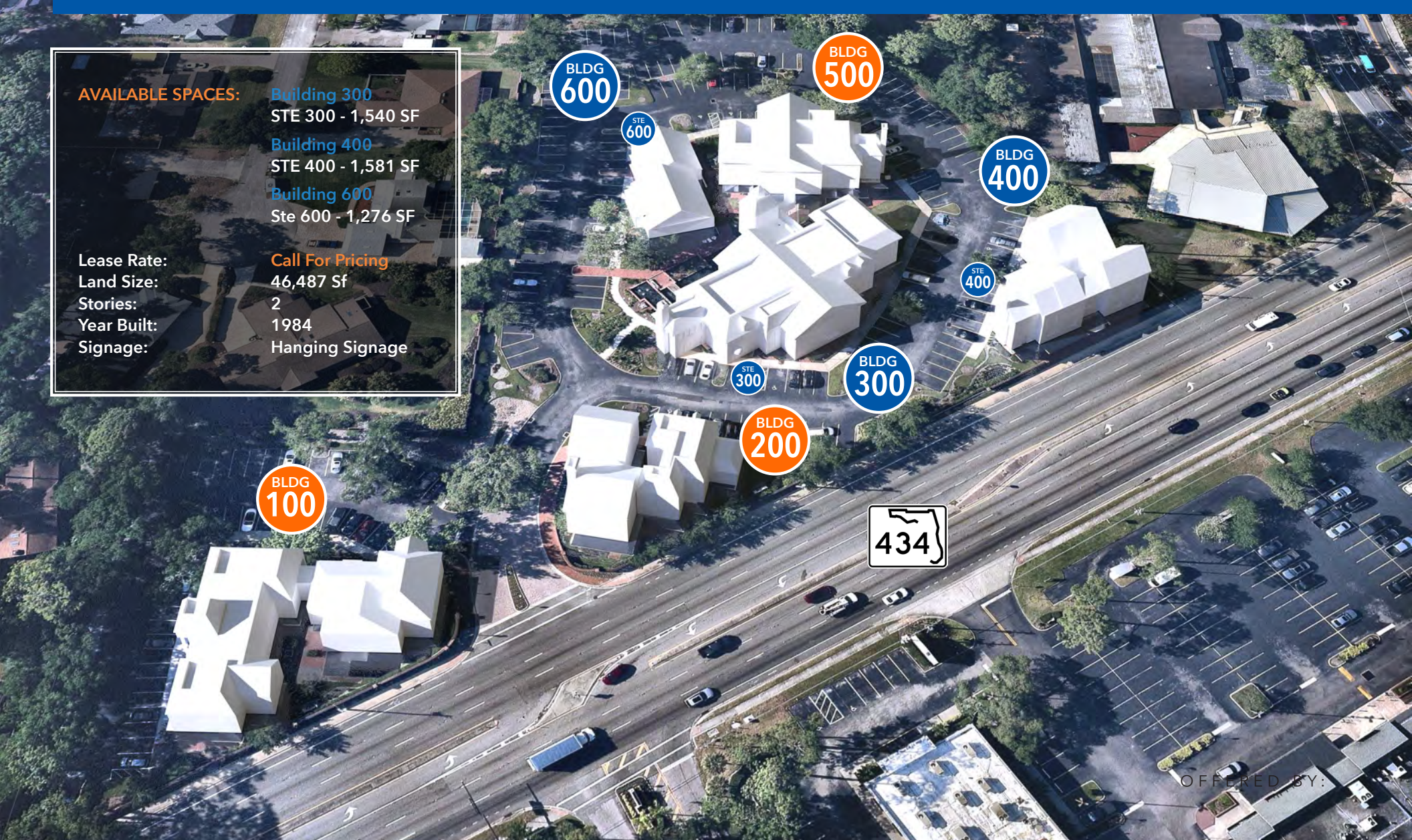


C R O W N   O A K   C E N T R E • L O N G W O O D ,   F L   3 2 7 5 0

**AVAILABLE SPACES:**

**Building 300**  
STE 300 - 1,540 SF  
**Building 400**  
STE 400 - 1,581 SF  
**Building 600**  
Ste 600 - 1,276 SF

Lease Rate: **Call For Pricing**  
Land Size: 46,487 Sf  
Stories: 2  
Year Built: 1984  
Signage: Hanging Signage



OFFERED BY:

## HIGHLIGHTS

- Ideal location - convenient to I-4
- Private Parking Spaces: 4/1000
- Professional Neighbors
- Well Maintained Common Areas

## MOVE IN READY OFFICE SUITES

Crown Oak Centre is located in Longwood, with great access to Interstate 4. The professional office development offers generous amounts of parking and attractive grounds. Nearby eateries include Bonefish Grill and 4Rivers Smokehouse. Ideal for law firm, call center, or real estate office.



**Colin Chou**  
850.218.1902  
colin@4acre.com

# PROPERTY AERIAL

*Crowne  
Oak Centre*



# SUITE 300

*Crowne  
Oak Centre*



# SUITE 300 LAYOUT | 1,540 SF



OFFICE  
14' 11" x 13' 8"

Office  
12' 10" x 13' 10"

Storage  
5' 6" x 8' 1"

Open Area  
15' 10" x 13' 3"

Kitchenette

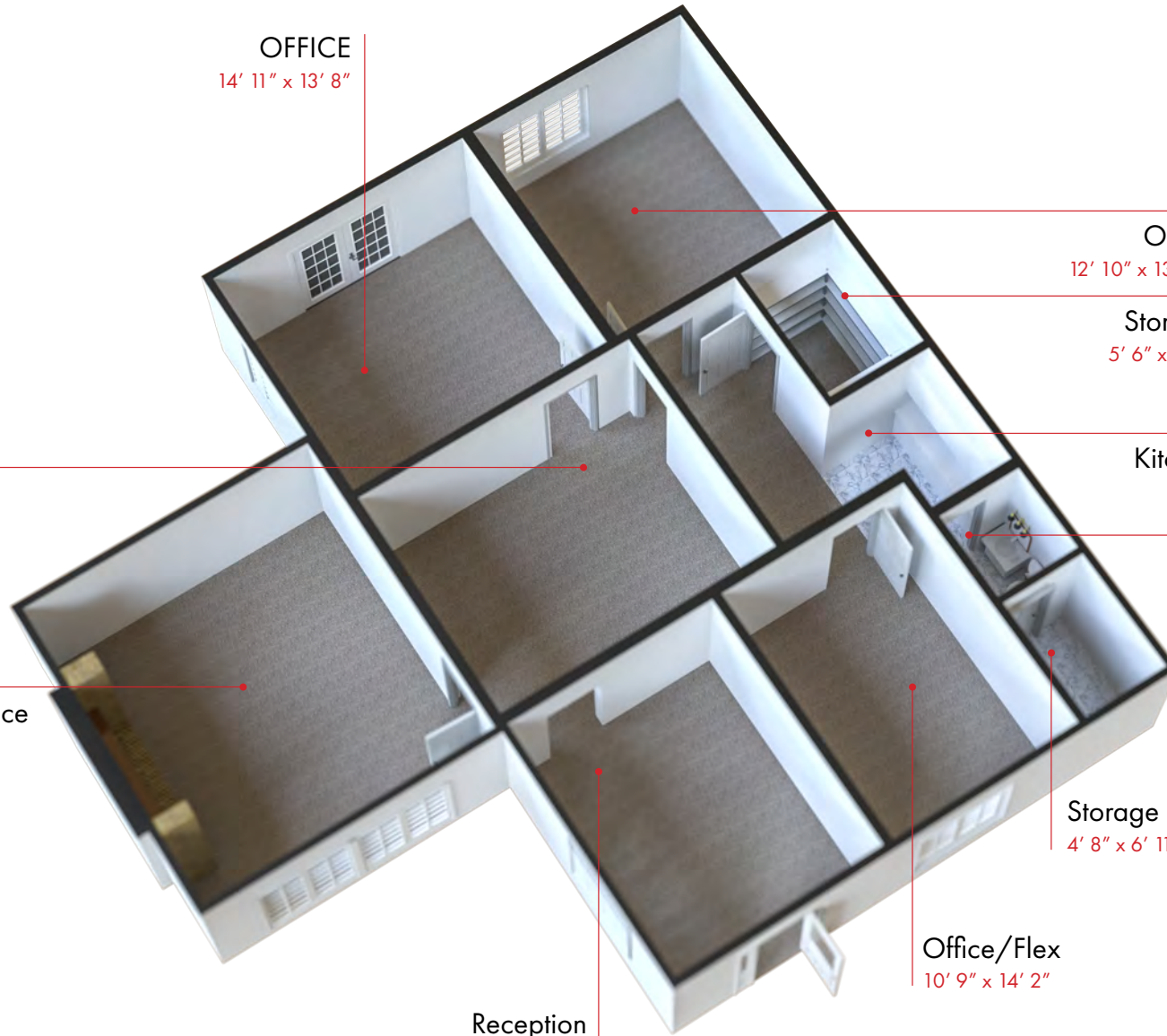
Restroom  
4' 8" x 5' 0"

Executive Office w/Fireplace  
16' 2" x 17' 7"

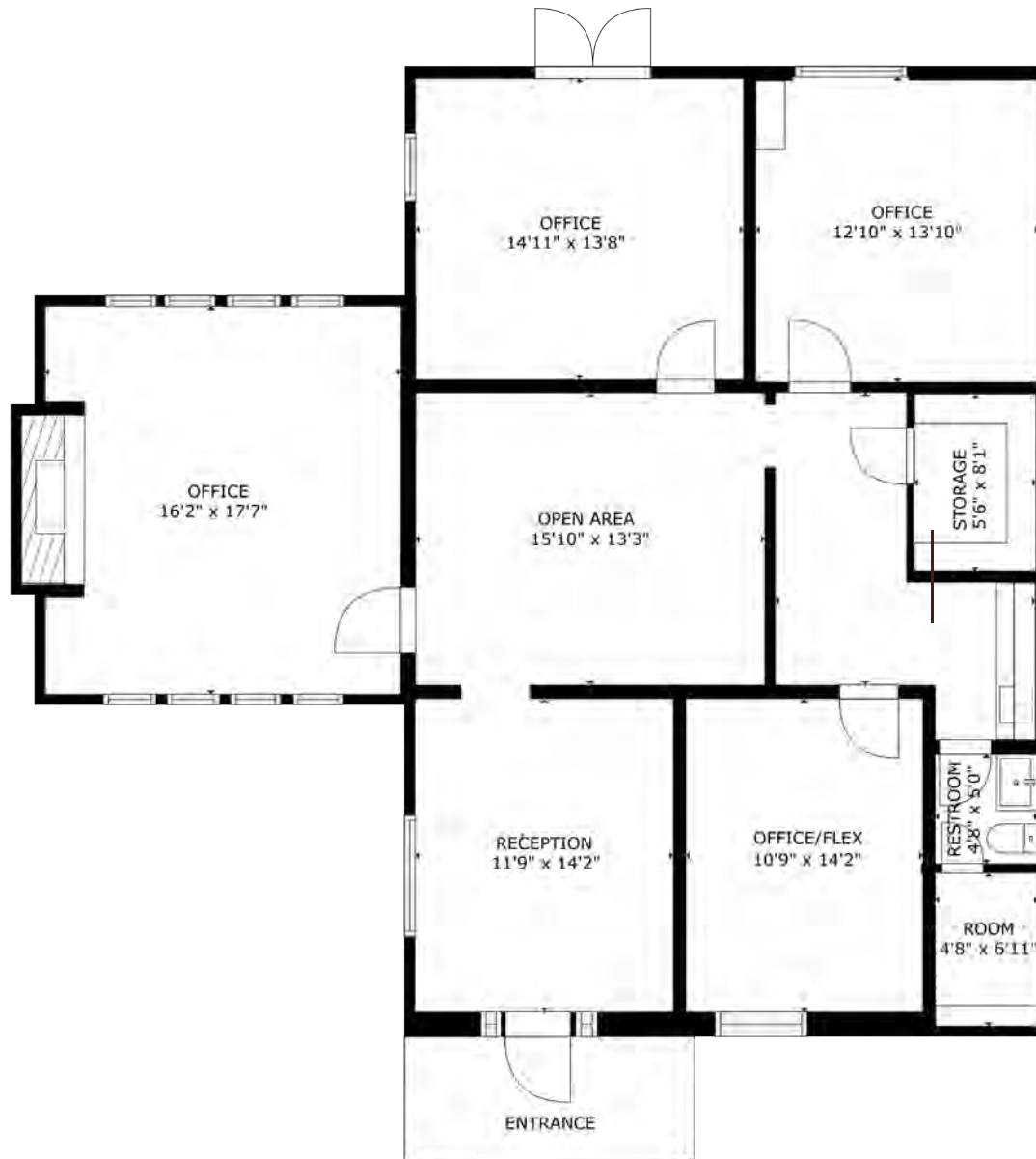
Storage  
4' 8" x 6' 11"

Reception  
11' 9" x 14' 2"

Office/Flex  
10' 9" x 14' 2"

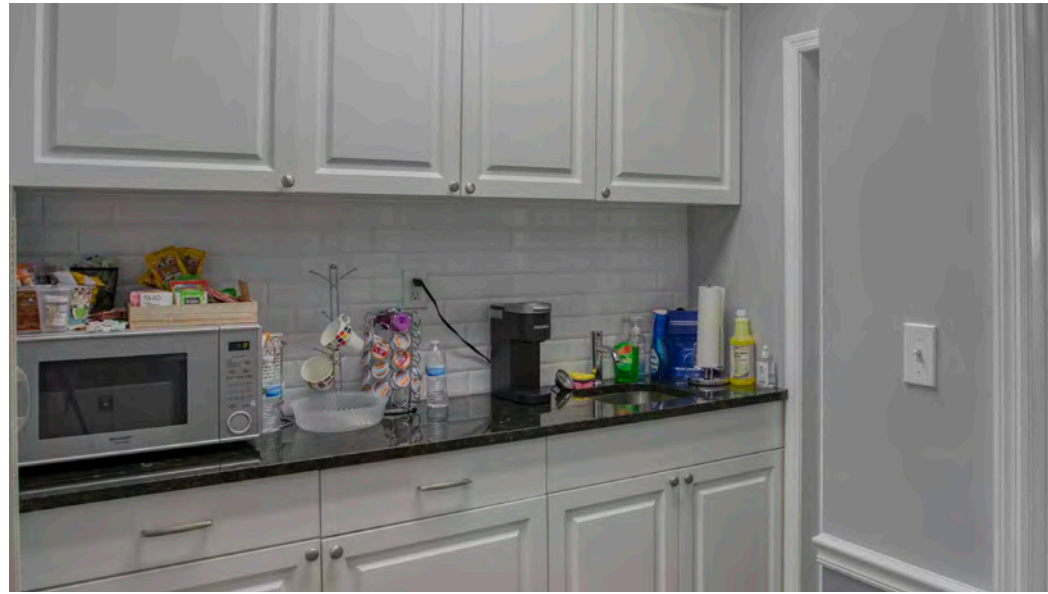
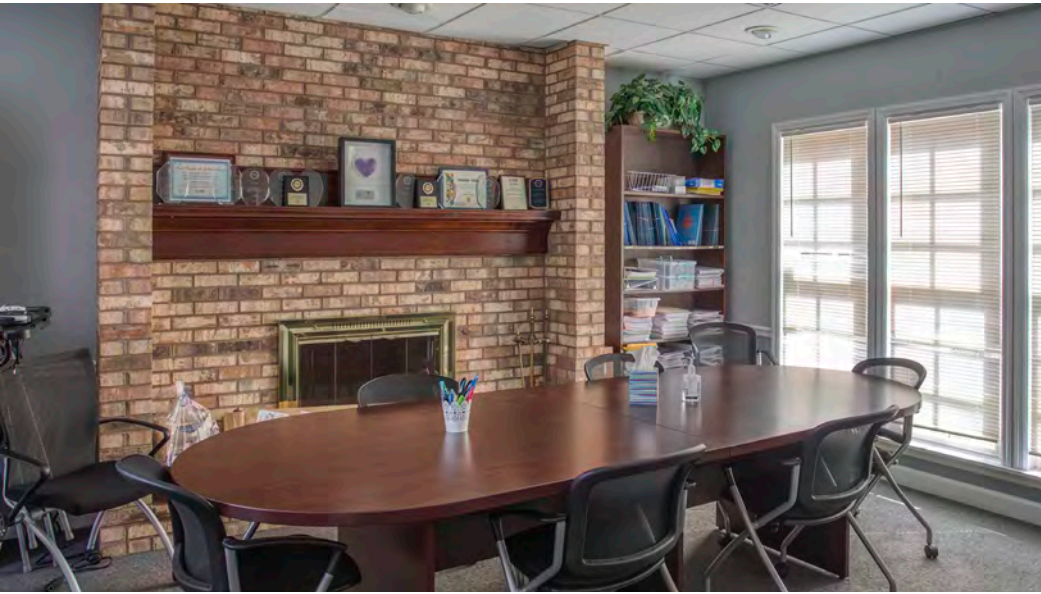


# SUITE 300 FLOOR PLAN | 1,540 SF



# SUITE 300 INTERIORS

*Crowne  
Oak Centre*



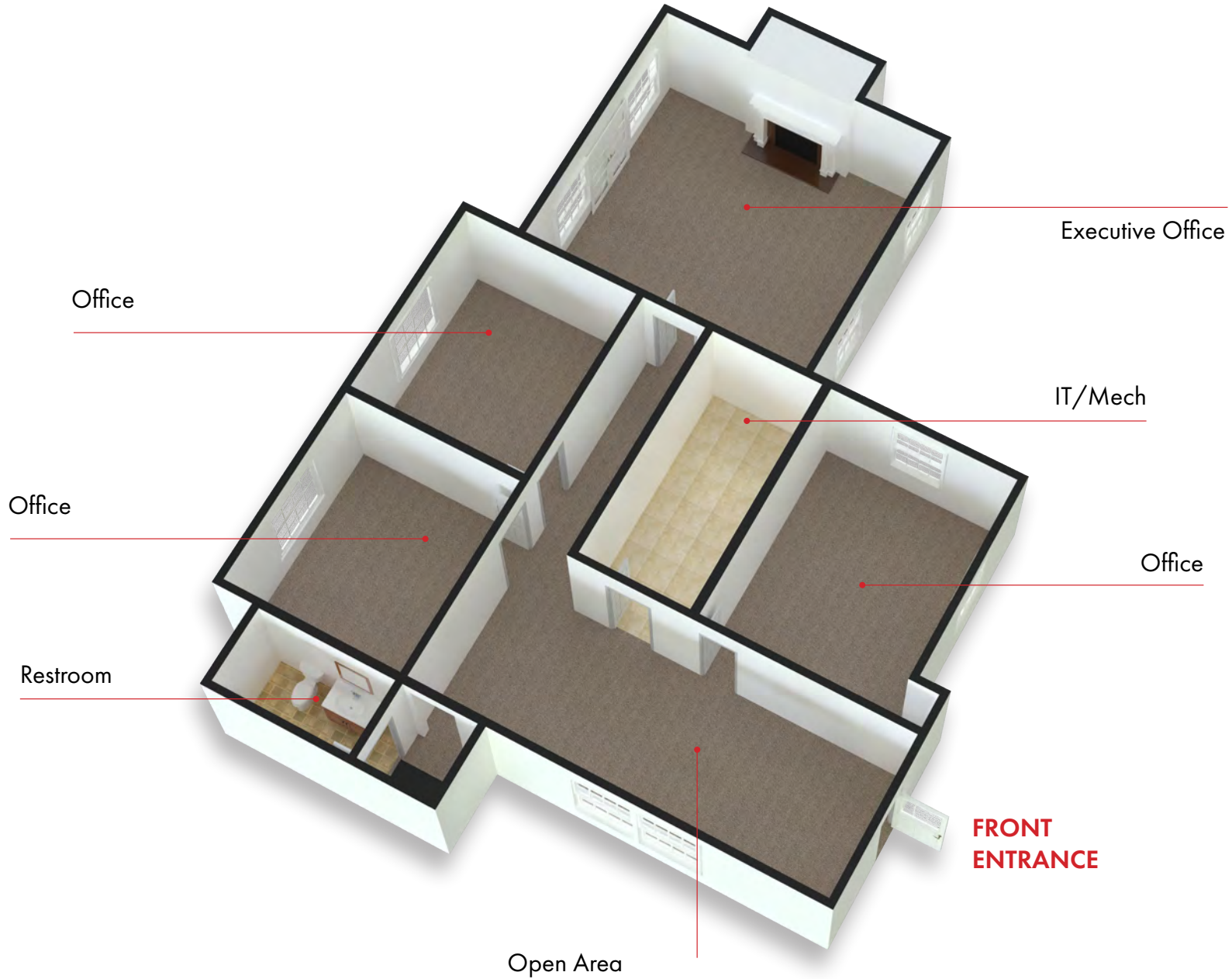
# SUITE 400

*Crowne  
Oak Centre*

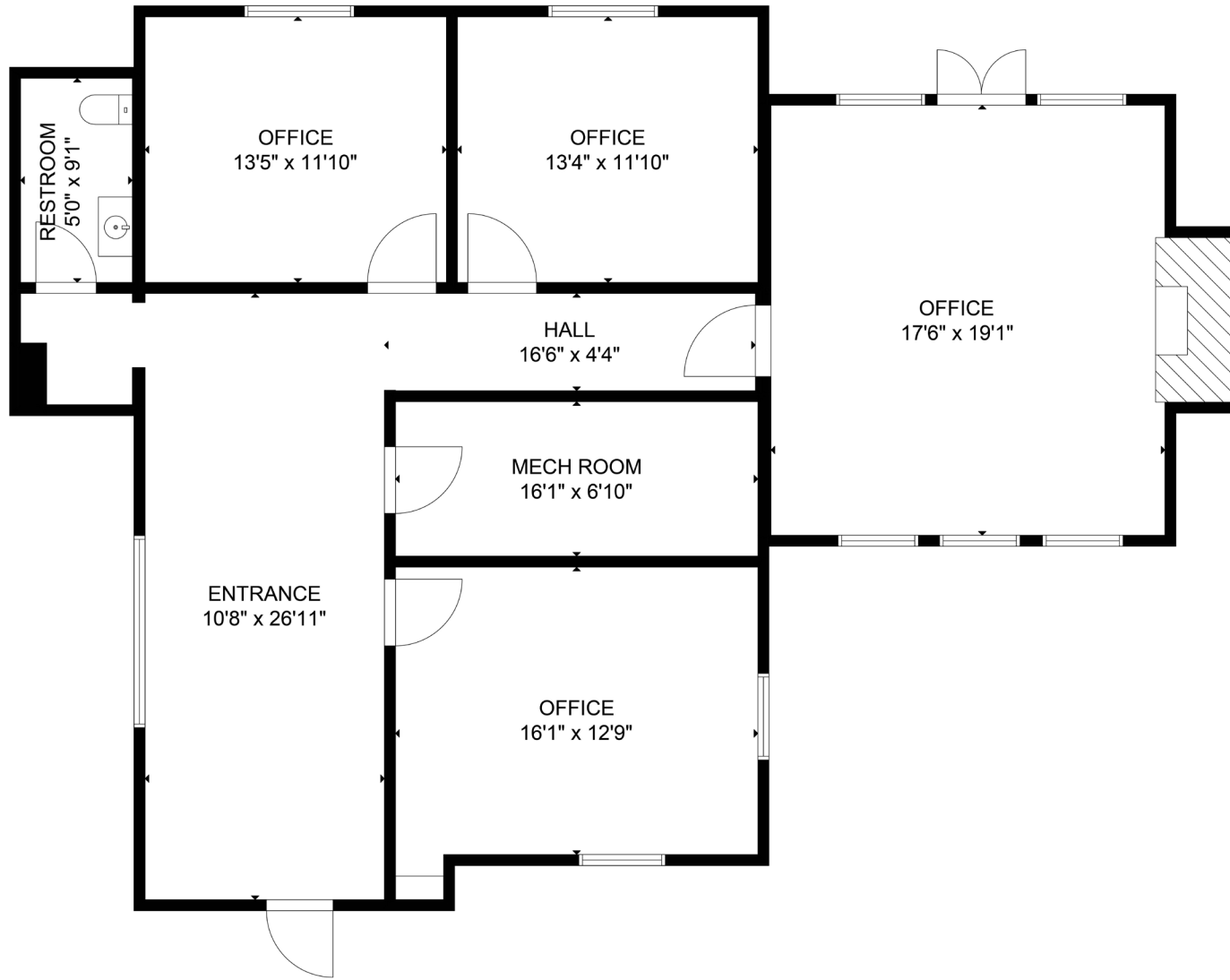




# SUITE 400 LAYOUT | 1,581 SF



# SUITE 400 FLOOR PLAN | 1,581 SF



# SUITE 400 INTERIORS

*Crowne  
Oak Centre*

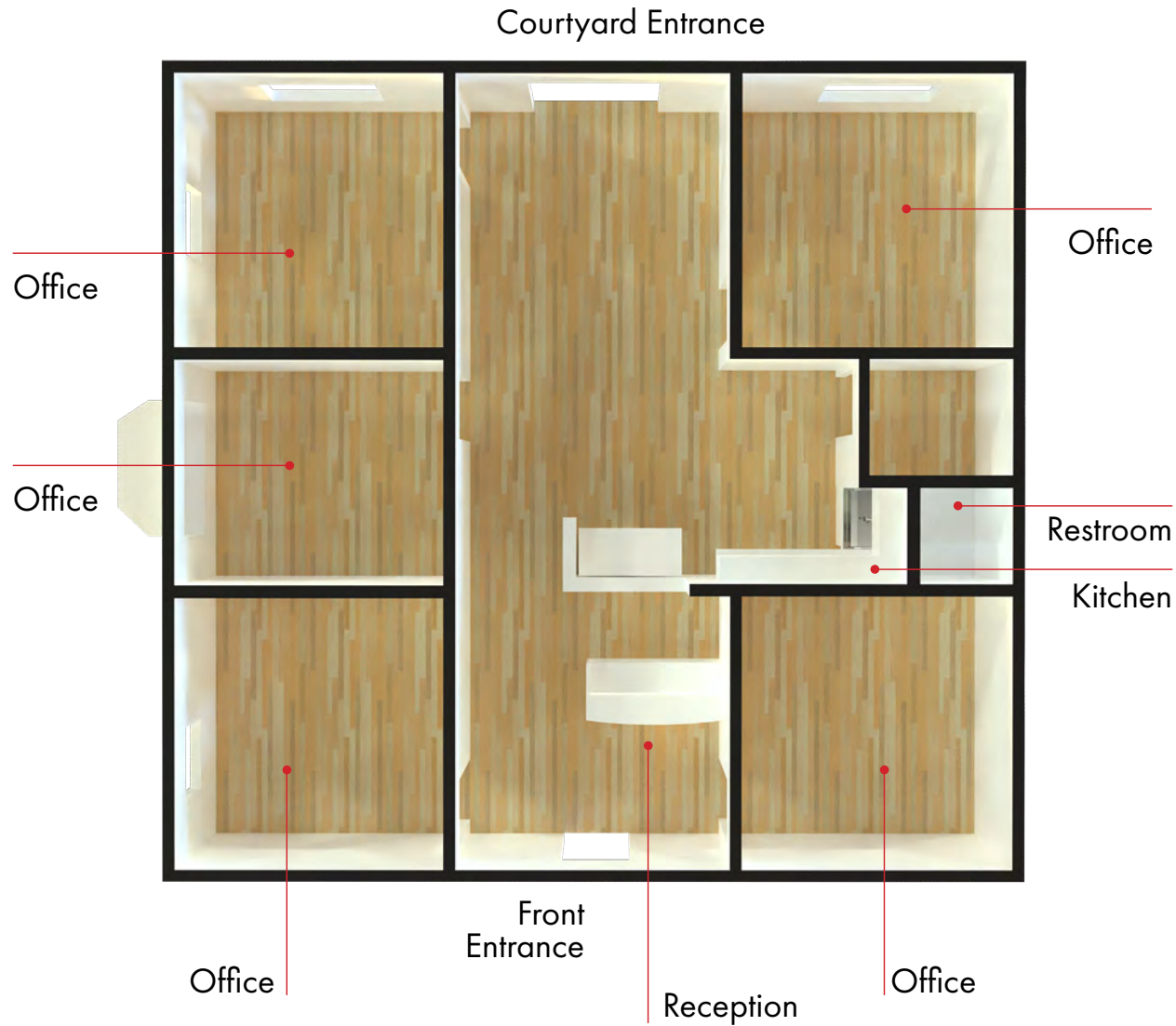


# SUITE 600 | 1,276 SF

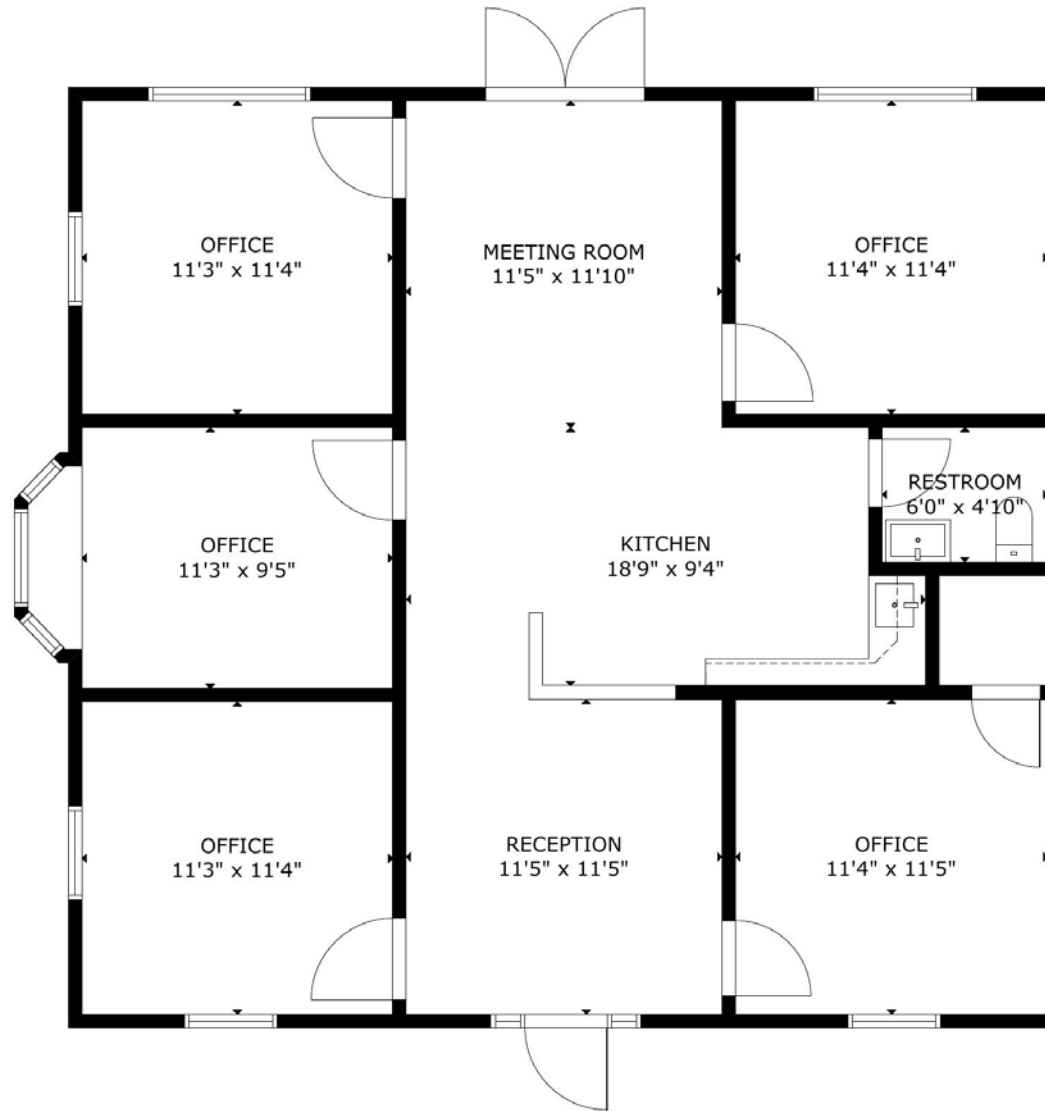
*Crowne  
Oak Centre*



# SUITE 600 LAYOUT | 1,276 SF



# SUITE 600 | 1,276 SF



# SUITE 600 INTERIORS



Reception



Main Open Area



Main Open Area



Kitchen Area



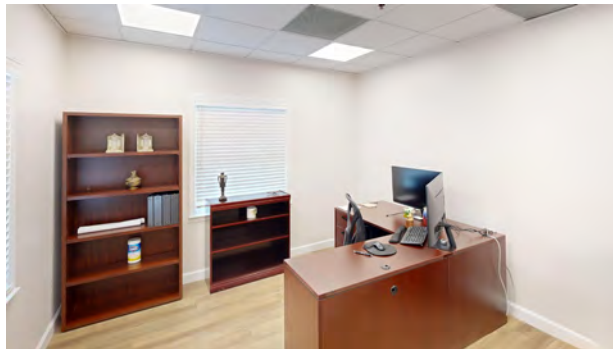
Kitchen Area



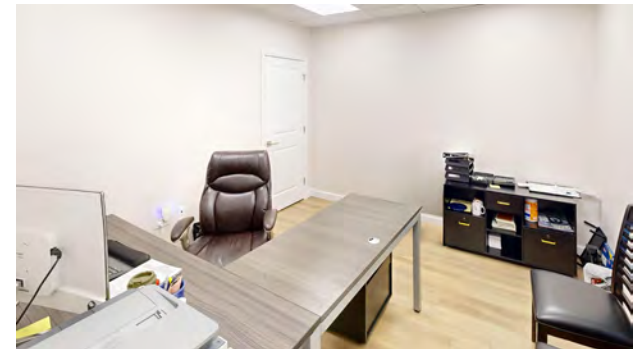
Office



Office



Office



Office

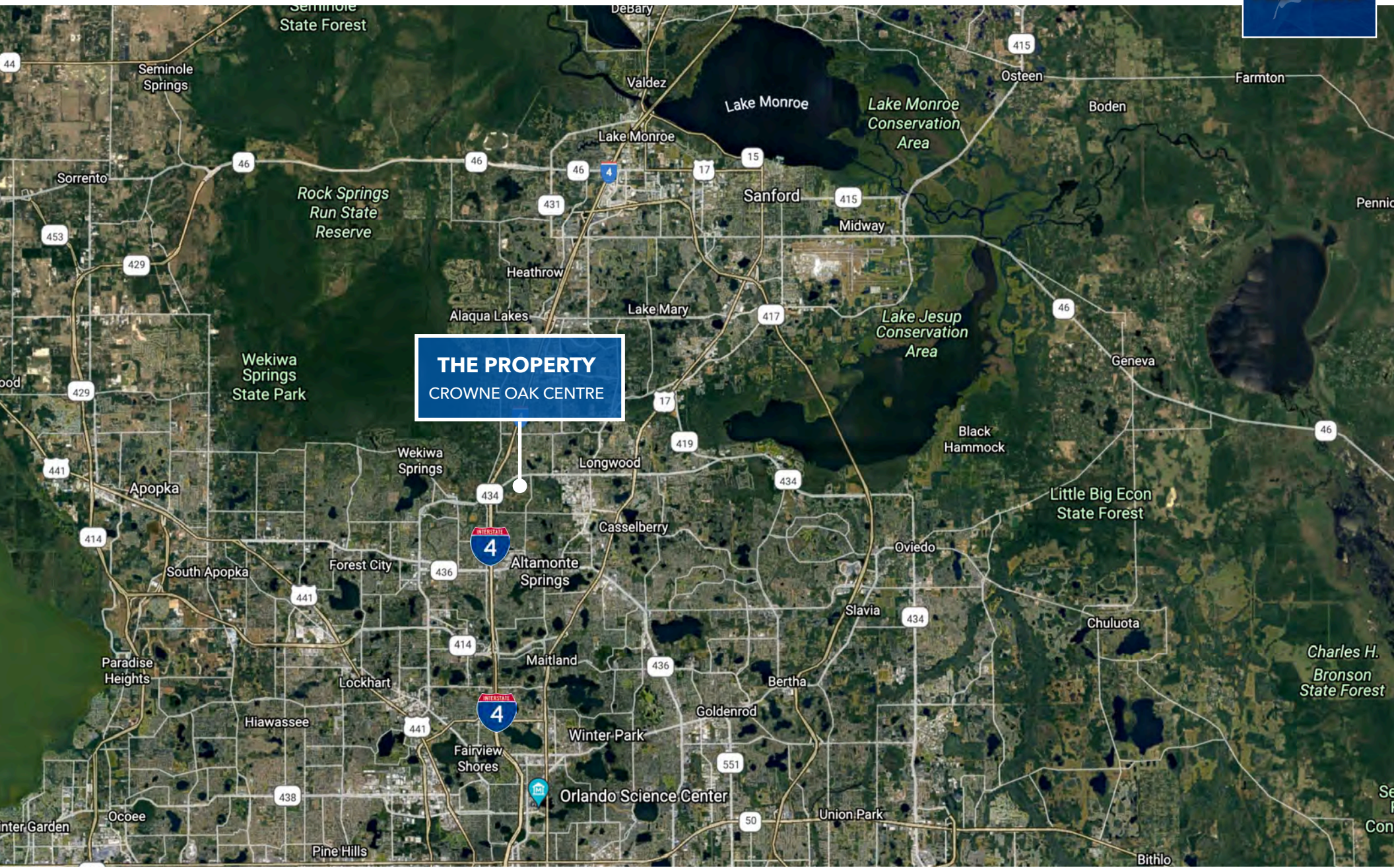
# POINTS OF INTEREST

Crowne  
Oak Centre





# LOCATION MAP



**THE PROPERTY**  
CROWNE OAK CENTRE

4 ACRE COMMERCIAL | CONTACT COLIN CHOU AT 850.218.1902





**COLIN CHOU**

**colin@4acre.com**

**850.218.1902**

4 Acre Commercial Real Estate (4 Acre) does not represent or warranty the accuracy of the information contained herein. Such information has been given to 4 Acre by the owner of the property or obtained from other sources deemed reliable. 4 Acre has no reason to doubt its accuracy, but does not guarantee it. The reviewer(s) of this document is encouraged to perform their own research for their own purposes to verify the dependability of the information being reviewed. All information should be verified by reviewer(s) prior to purchase or lease. Unless otherwise noted, the property is being offered as-is, where is, with all faults. This information represents the proprietary work product of 4 Acre Realty, LLC and may not be copied, reproduced, modified, distributed, published, transmitted, or otherwise disclosed without the express written consent of 4 Acre Realty, LLC.