

PARKRIDGE FOUR

10375 Park Meadows Drive, Lone Tree, CO 80124



PROPERTY HIGHLIGHTS

- RENOVATIONS UNDERWAY:
 - TRAINING/CONFERENCE CENTER
 - FITNESS CENTER
 - NEW TENANT LOUNGE
 - CAFE WITH OUTDOOR SEATING
- EASY ACCESS TO I-25 AND C-470
- WALK TO LINCOLN LIGHT RAIL STATION
- EXECUTIVE COVERED PARKING
- INCREDIBLE MOUNTAIN VIEWS
- LEED CERTIFIED
- 4.4:1,000 PARKING
- FITWEL RATED

RENOVATIONS IN PROGRESS



For leasing information please contact:

Matt Smith | 303.996.8460
msmith@premisescommercial.com

Michelle Gertzman | 720.743.6399
mgertzman@premisescommercial.com

PREMISES
PREMISES COMMERCIAL REAL ESTATE LLC
WWW.PREMISESCOMMERCIAL.COM

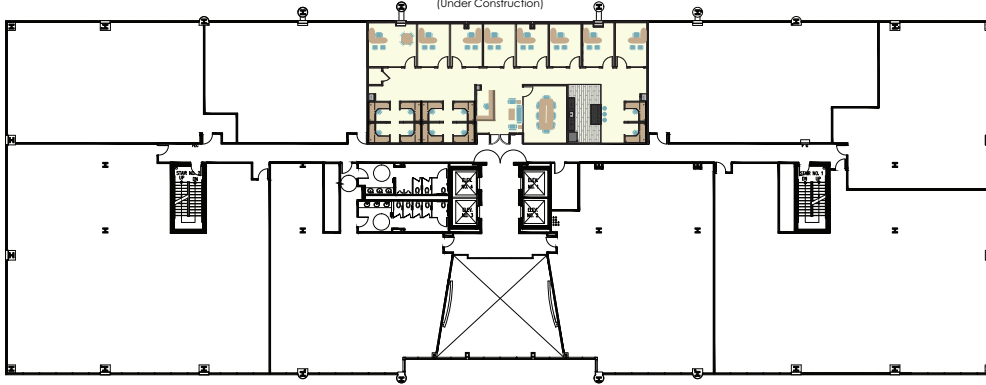
PARKRIDGE FOUR

10375 Park Meadows Drive, Lone Tree, CO 80124

AVAILABLE SUITES

Second Floor

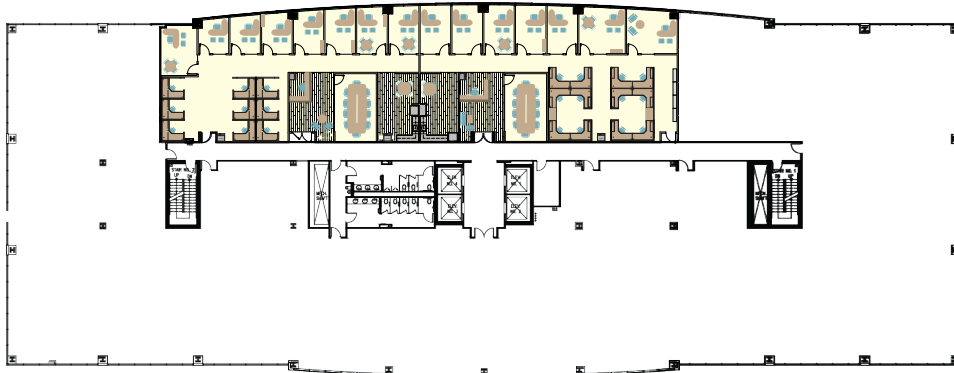
Spec Suite 240
3,523 sf
(Under Construction)



Third Floor

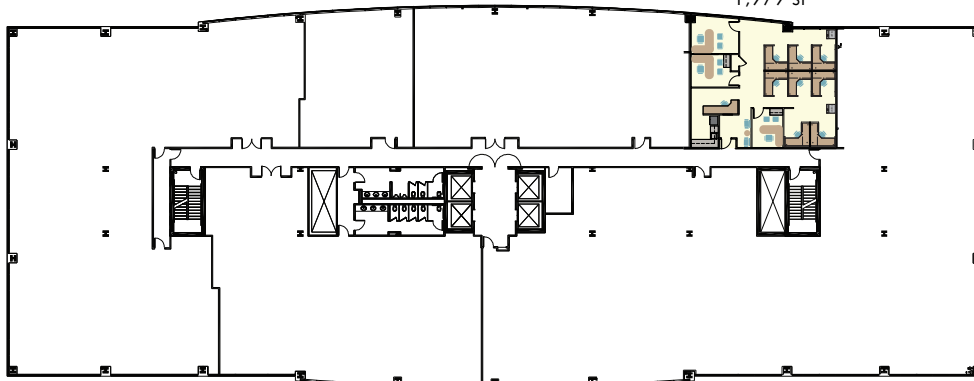
Spec Suite 370
3,767 sf
(Hypothetical)

Spec Suite 360
3,953 sf
(Hypothetical)



Fifth Floor

Suite 570
1,979 sf



WWW.PREMISESCOMMERCIAL.COM

The information contained herein, while not guaranteed, has been secured from sources we believe to be reliable. Different brokerage relationships are available which include Seller/Landlord Agency, Buyer/Tenant Agency and Transaction Broker. Premises Commercial Real Estate, LLC is acting in this capacity as Landlord's/Sublessor's Agent, unless otherwise agreed, and owes its fiduciary allegiance to Landlord/Sublessor as defined by Colorado Real Estate Commission.