

2825

SANTA MONICA BLVD



PLAY VIRTUAL TOUR

CBRE

2.8.2.5

SANTA MONICA BLVD

PROPERTY FEATURES



Fully renovated
in 2019



Large Block of Contiguous
Medical Space Available
on Santa Monica Blvd



On-Site
Subterranean Parking



Conveniently Located 2 Minutes
from Providence Saint John's and
4 Minutes from UCLA Medical Center

LEASE TERMS

- Suite 300: \pm 9,301 SF
- Suite 303A: \pm 1,923 SF
- Rate: \$5.50 MG
- Term: 5 to 10 years
- Parking: 3 per 1,000



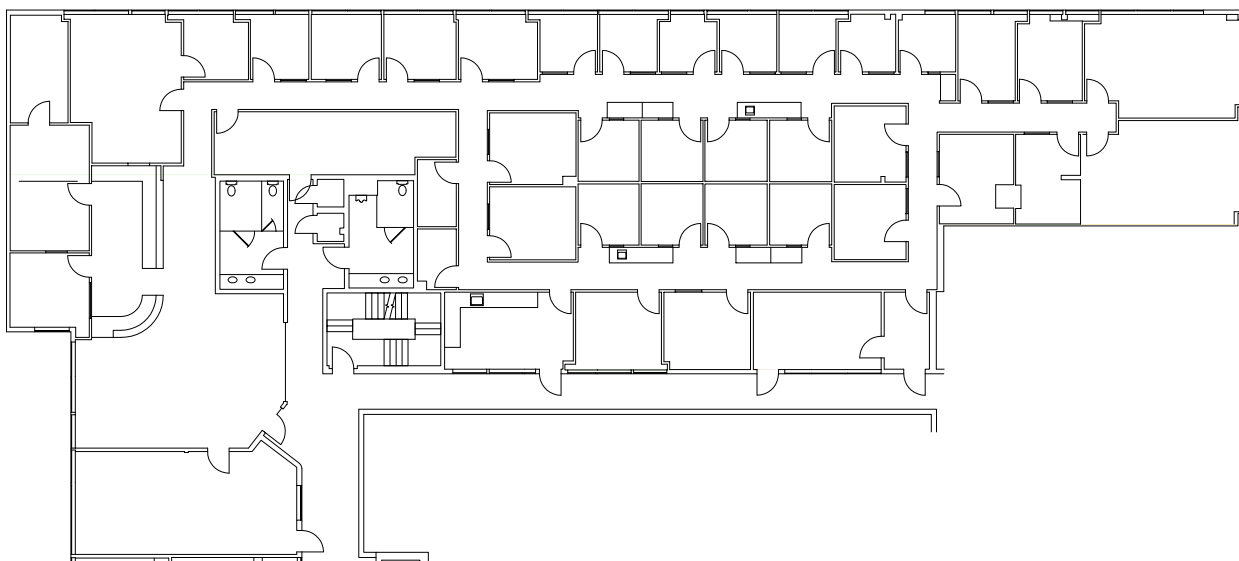
2·8·2·5

SANTA MONICA BLVD

AVAILABILITY

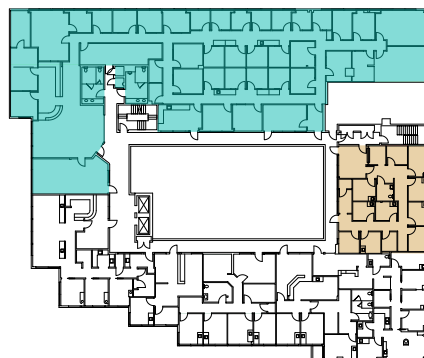
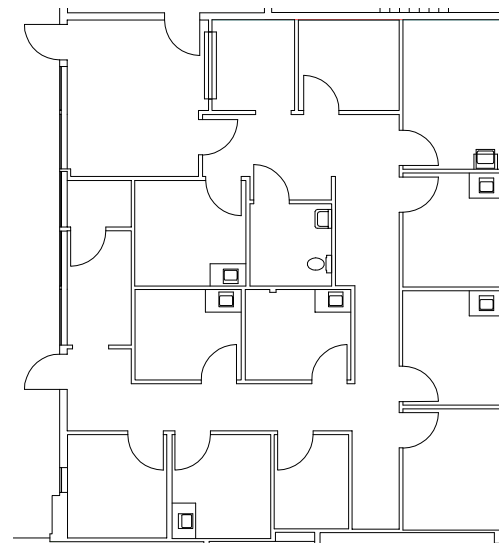
SUITE 300

±9,301 SF



SUITE 303A

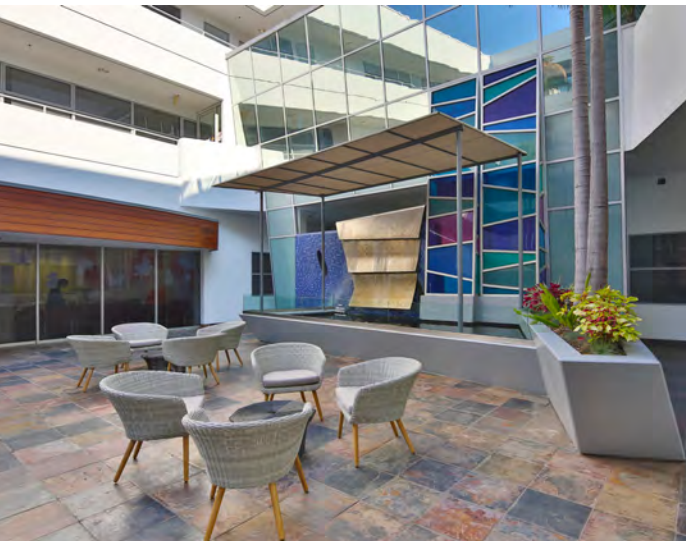
±1,923 SF





2·8·2·5

SANTA MONICA BLVD



2.8.2.5

SANTA MONICA BLVD

CONTACTS • • •

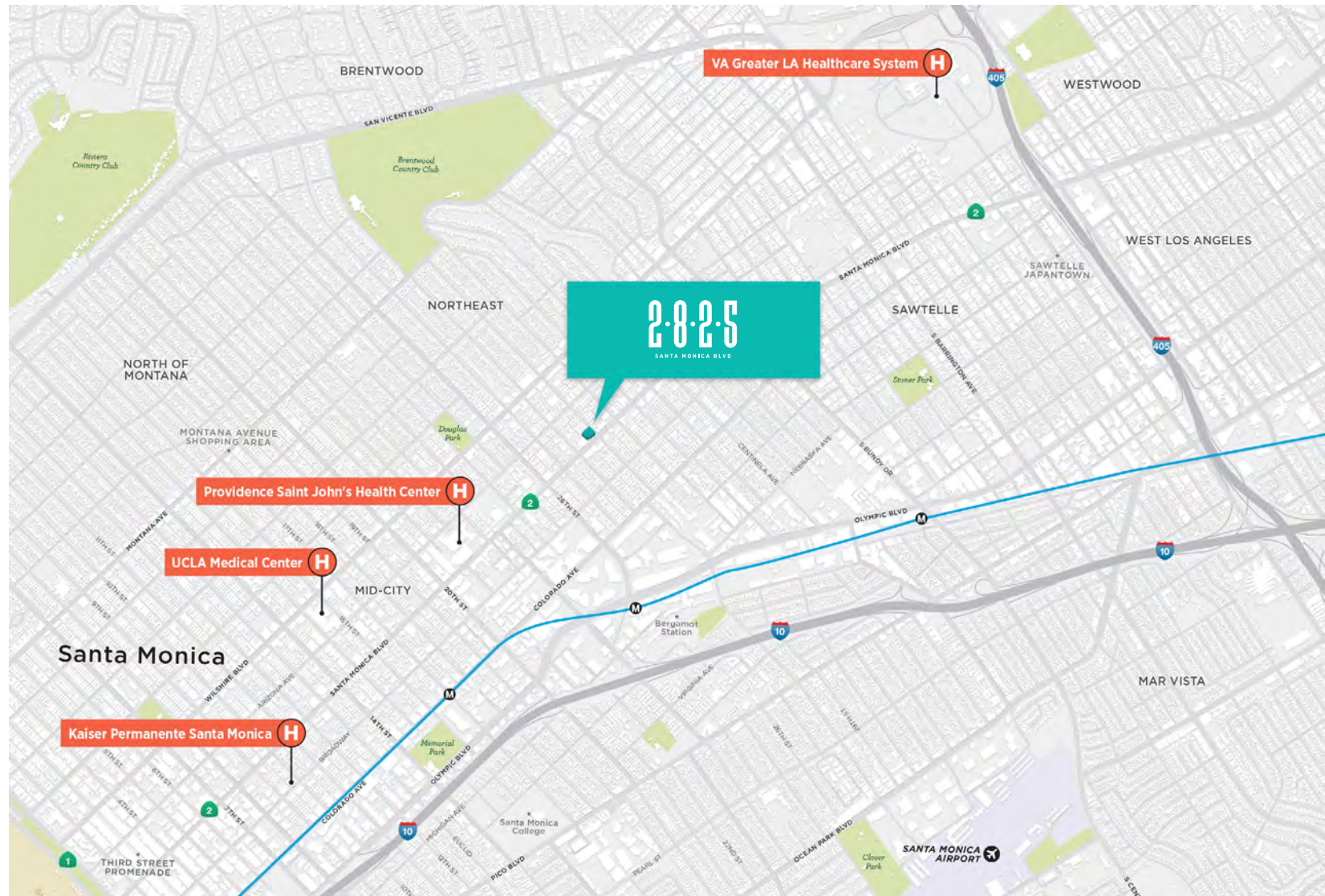
ANGIE WEBER

First Vice President
+1 818 502 6750
angie.weber@cbre.com
Lic. 01015031

DANA NIALIS

Senior Associate
+1 818 502 6774
dana.nialis@cbre.com
Lic. 01947265

CBRE



© 2020 CBRE, Inc. All rights reserved. This information has been obtained from sources believed reliable, but has not been verified for accuracy or completeness. You should conduct a careful, independent investigation of the property and verify all information. Any reliance on this information is solely at your own risk. CBRE and the CBRE logo are service marks of CBRE, Inc. All other marks displayed on this document are the property of their respective owners, and the use of such logos does not imply any affiliation with or endorsement of CBRE. Photos herein are the property of their respective owners. Use of these images without the express written consent of the owner is prohibited. PMStudio_February2020