

525 Old Piedmont Hwy

±100,000 up to ±411,000 SF Available

525 Old Piedmont Highway
Greenville, SC 29605
Site #2331

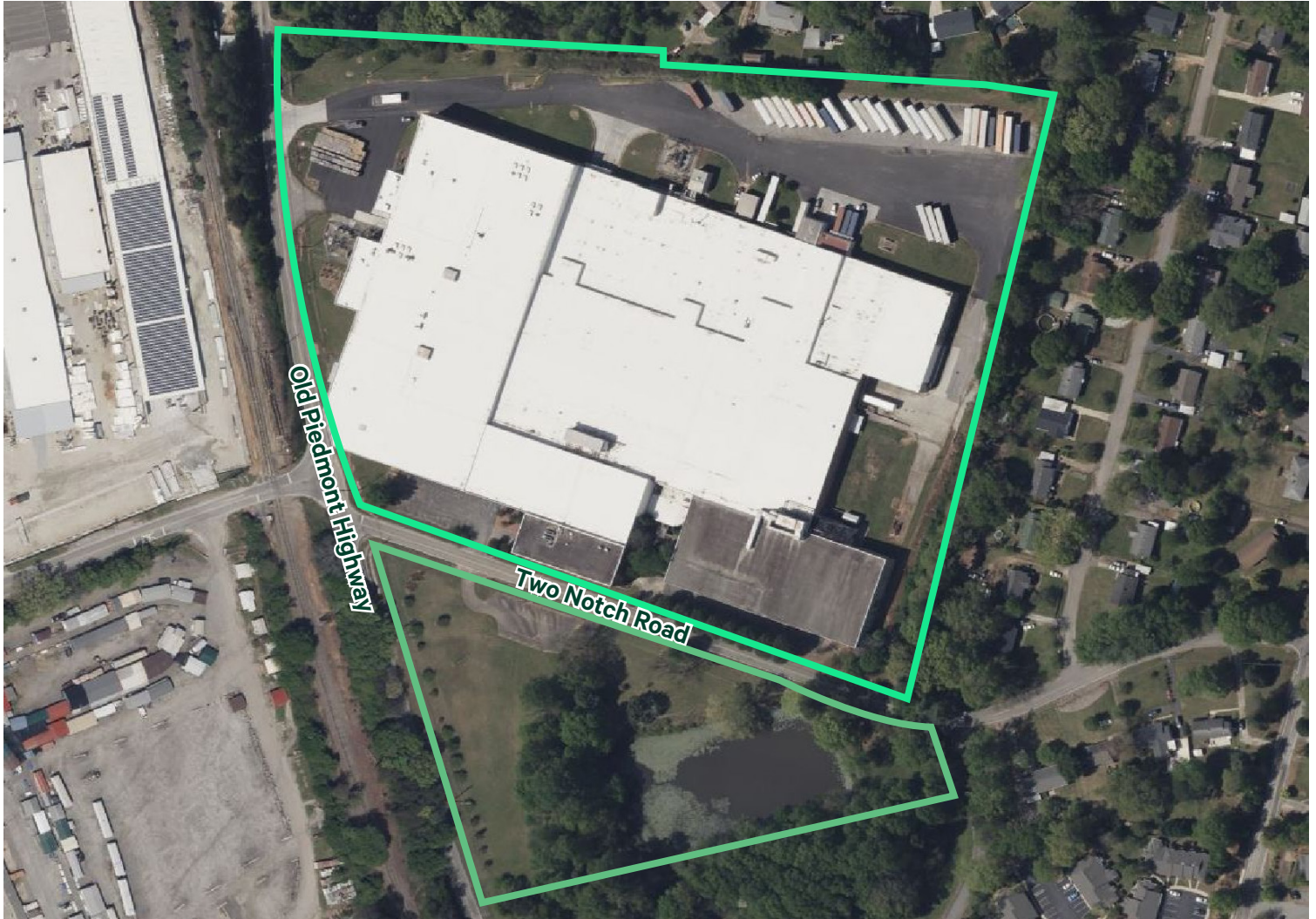
Contact Broker For Pricing



Contact Us

Campbell Lewis, SIOR
First Vice President
+1 404 312 1403
campbell.lewis@cbre.com

Marcus Cornelius, SIOR
First Vice President
+1 864 320 0445
marcus.cornelius@cbre.com



Property Details

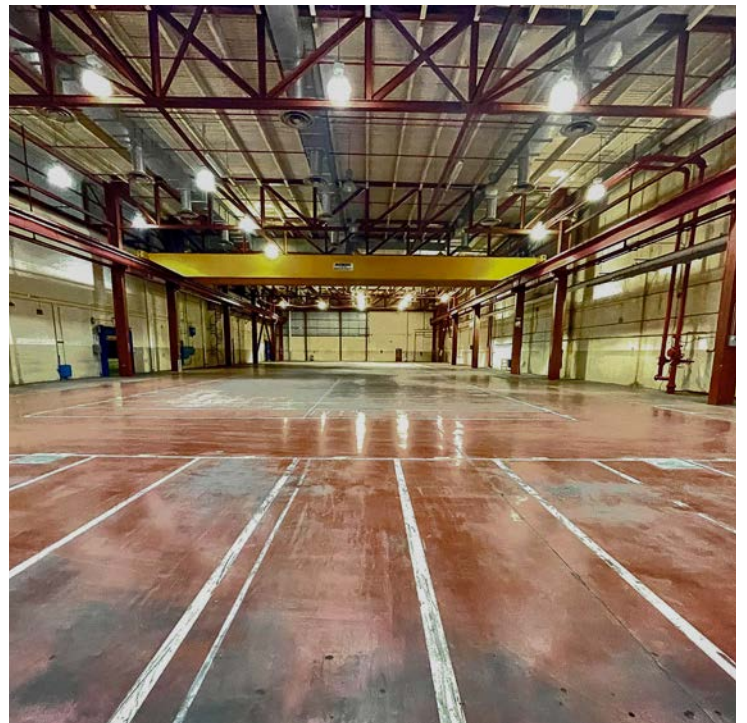
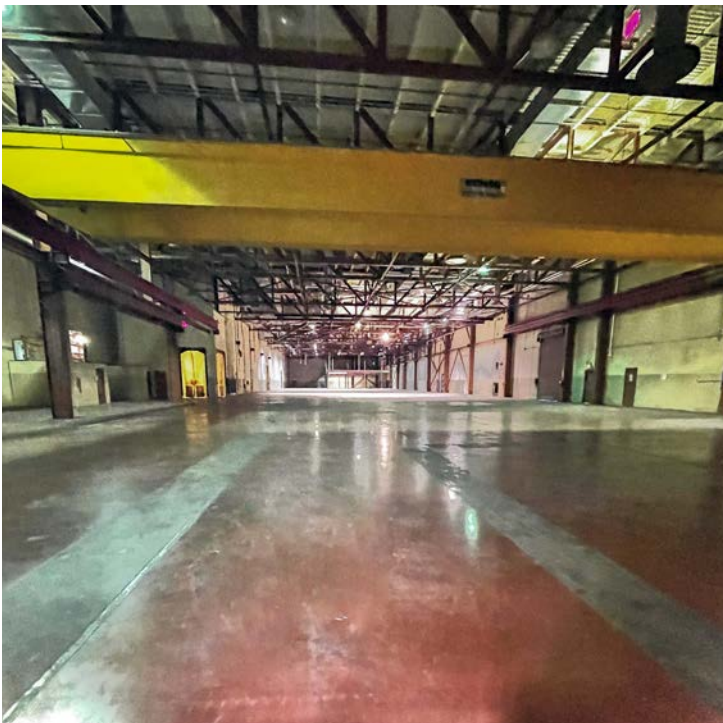
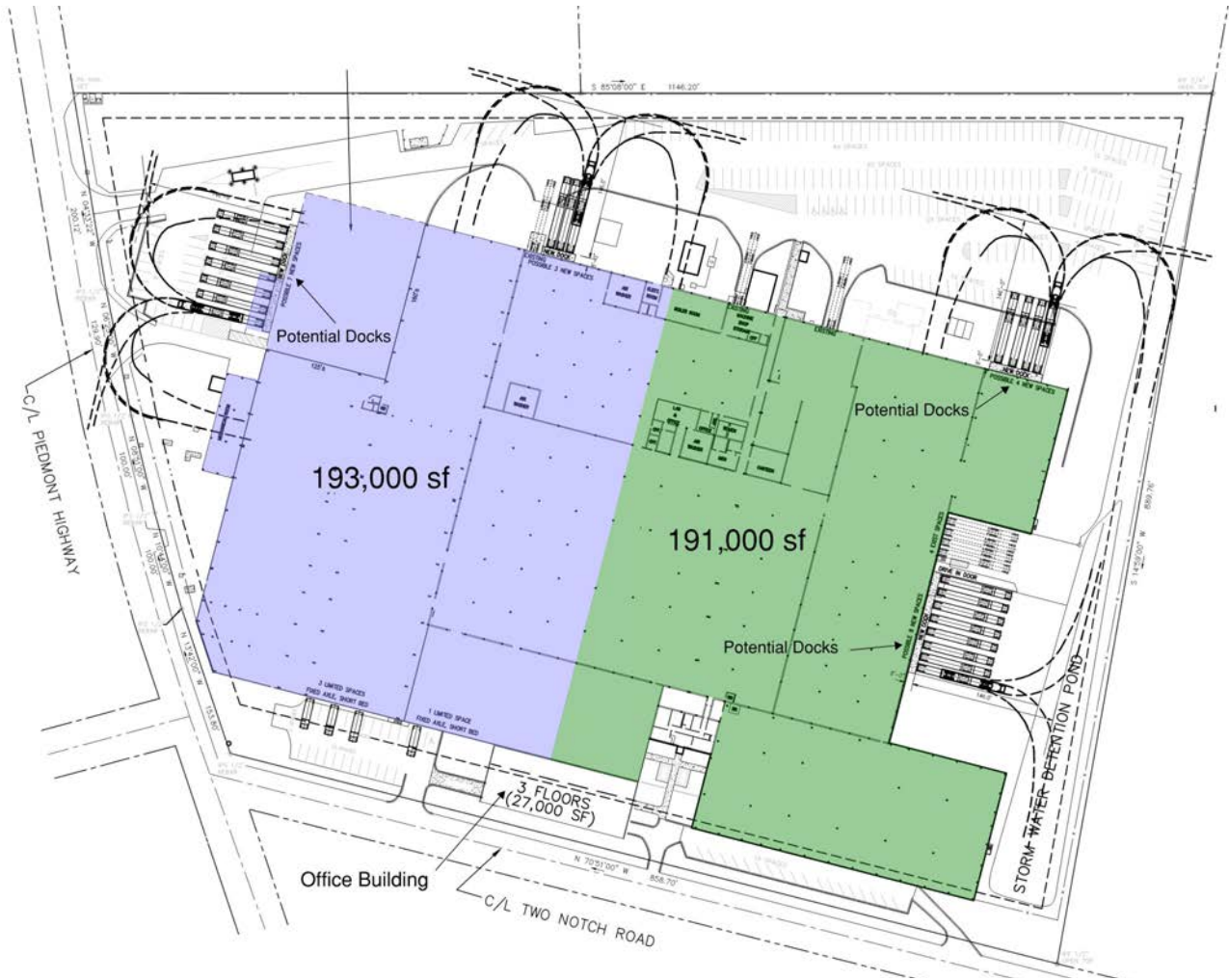
- + Total Building Size: ±411,000 SF
 - Manufacturing / Warehouse: ±384,000 SF
 - Office: ±27,000 SF (3 story)
- + Land Area: 22.97 Acres
- + Zoned: Greenville County | I-1
- + Tax Map #WG01010301100 & WG01010301400
- + Clear Height: 15' - 28'
 - 200,000 SF greater than 25'
- + Executive offices, cubicles and conference room
- + Dock Doors: 9
- + Drive-In Doors: 4
- + Overhead Cranes: 27 total ranging from 1-15 tons
- + Sprinkler: Wet
- + Up to 295 auto parking spaces available
- + Fenced secured truck court with guard shack
- + Power: 2, 44,000 volt substations; 6.5 MW
- + All Utilities Available:
 - Water: Greenville Water System
 - Sewer: Greater Greenville Sanitation
 - Gas: Piedmont Natural Gas
 - Electric: Duke

525 Old Piedmont Highway
Greenville, SC 29605

For Lease

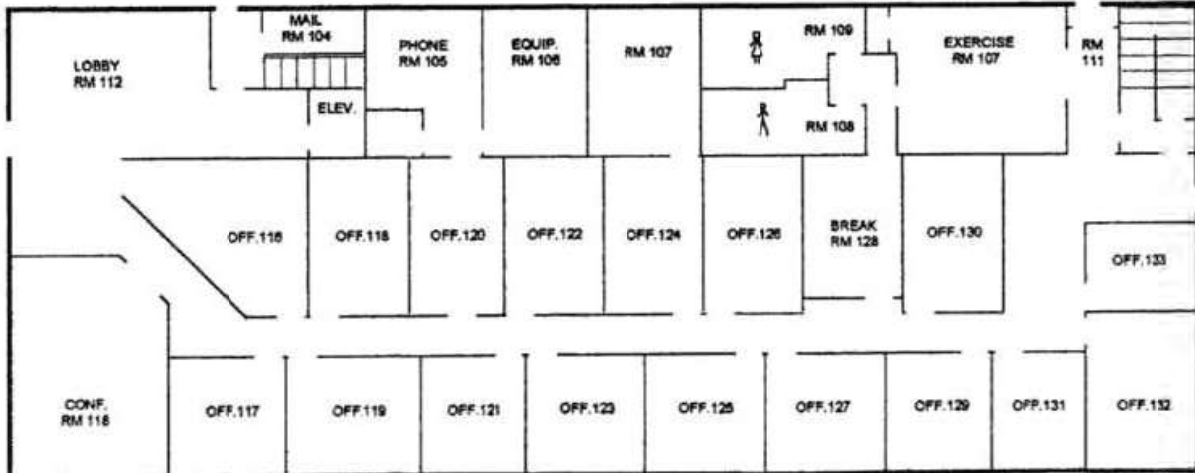


Building Floor Plan

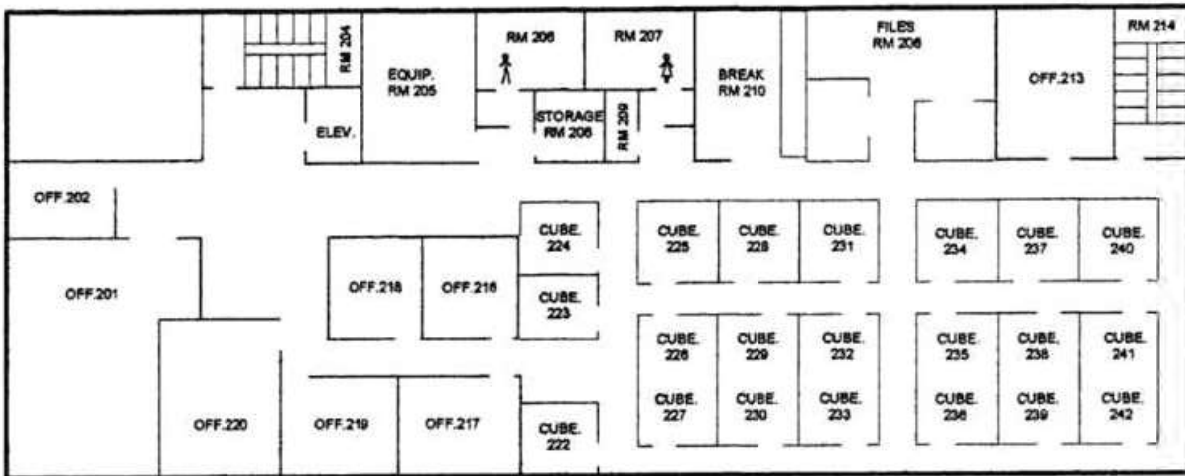


Office Floor Plan

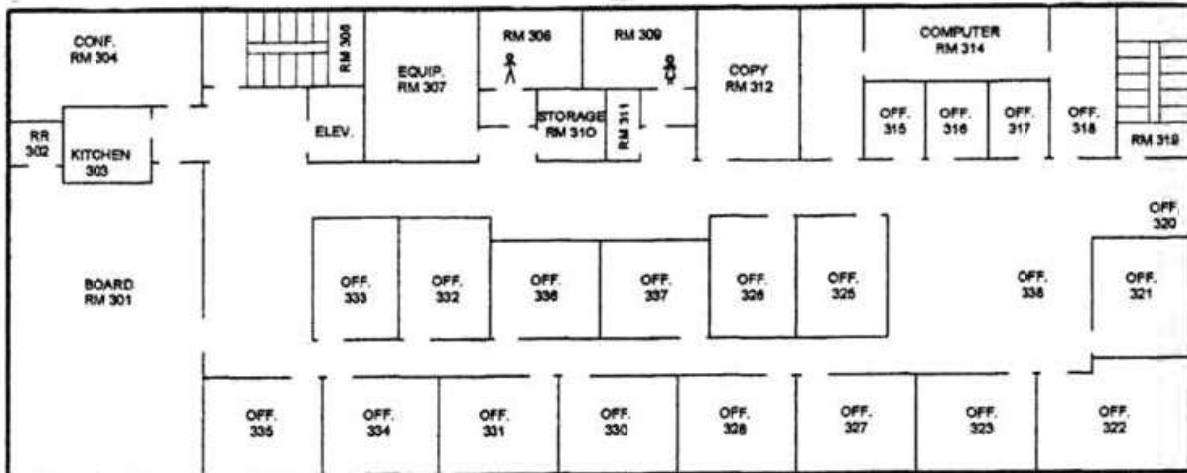
1st Floor:

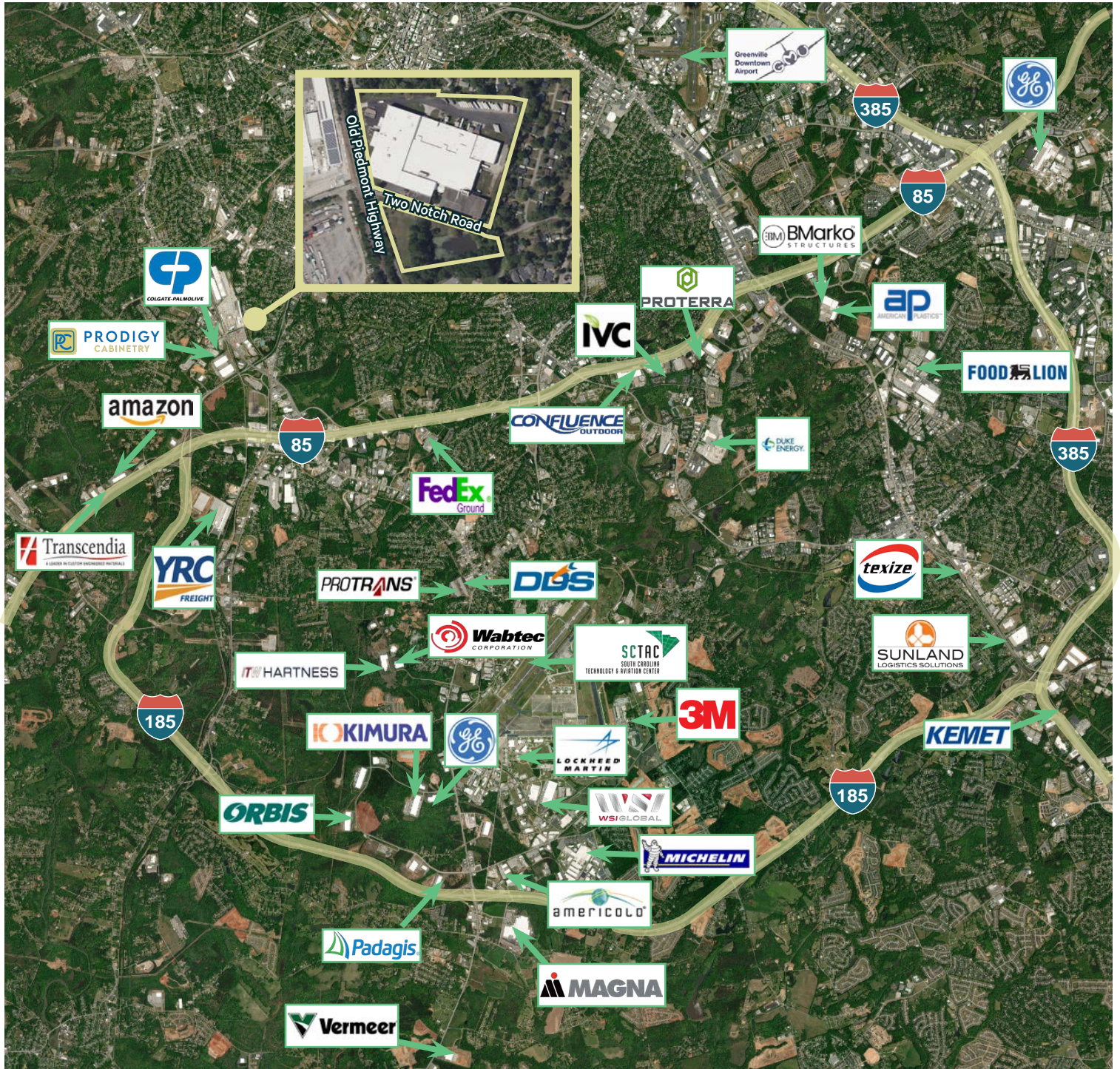


2nd Floor:



3rd Floor:

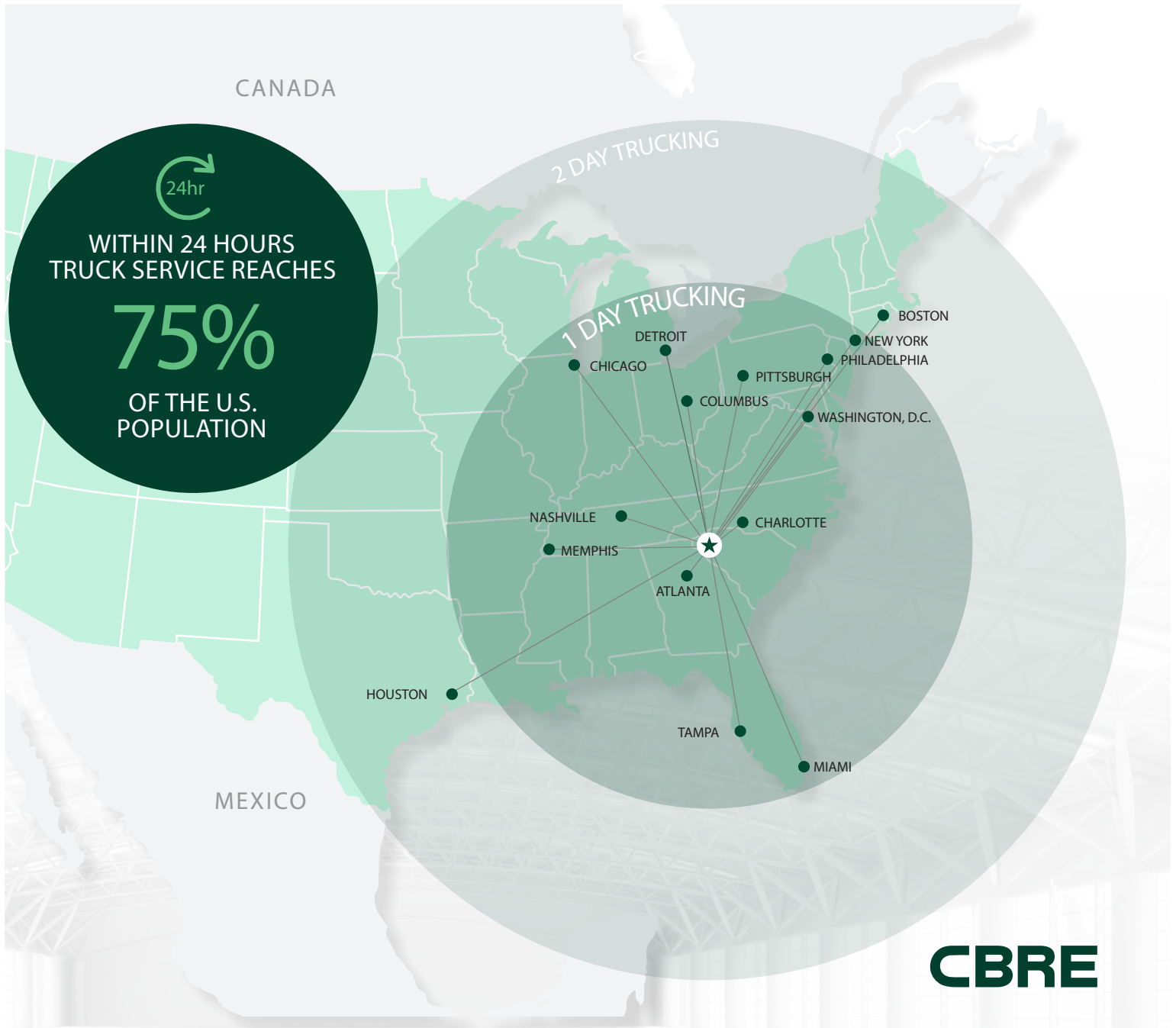




Demographics

	Population	Businesses	Labor Force	Bachelor's degree or Higher	Avg HH Income	Daytime Population
10 Miles	382,201	15,970	190,562	65,257	\$95,323	441,392
20 Miles	769,941	24,914	380,311	125,776	\$96,804	785,269
30 Miles	1,172,828	36,375	563,387	173,078	\$91,335	1,189,306

Trucking Map



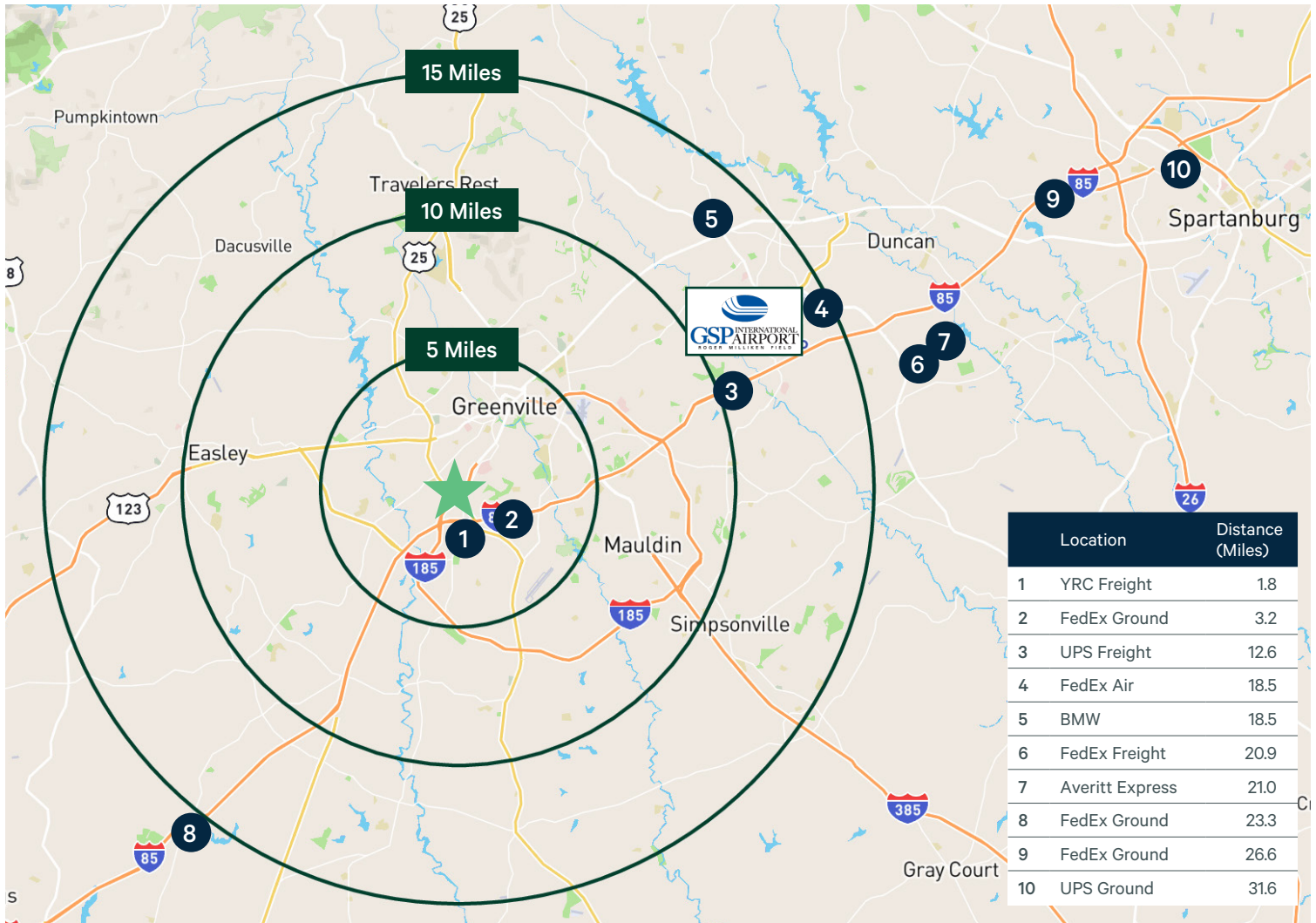
\$63.4B economic impact
100 foreign ports served
94M consumers live within 500 mile radius



MAJOR RAIL LINES AVAILABLE



19 NONSTOP DESTINATIONS ON
100+ DAILY FLIGHTS



0.9
Miles



2.3
Miles



15.8
Miles



22.1
Miles



31.3
Miles



219
Miles

Contact Us

Campbell Lewis, SIOR
First Vice President
+1 404 312 1403
campbell.lewis@cbre.com

Marcus Cornelius, SIOR
First Vice President
+1 864 320 0445
marcus.cornelius@cbre.com

© 2024 CBRE, Inc. All rights reserved. This information has been obtained from sources believed reliable, but has not been verified for accuracy or completeness. You should conduct a careful, independent investigation of the property and verify all information. Any reliance on this information is solely at your own risk. CBRE and the CBRE logo are service marks of CBRE, Inc. All other marks displayed on this document are the property of their respective owners, and the use of such logos does not imply any affiliation with or endorsement of CBRE. Photos herein are the property of their respective owners. Use of these images without the express written consent of the owner is prohibited.