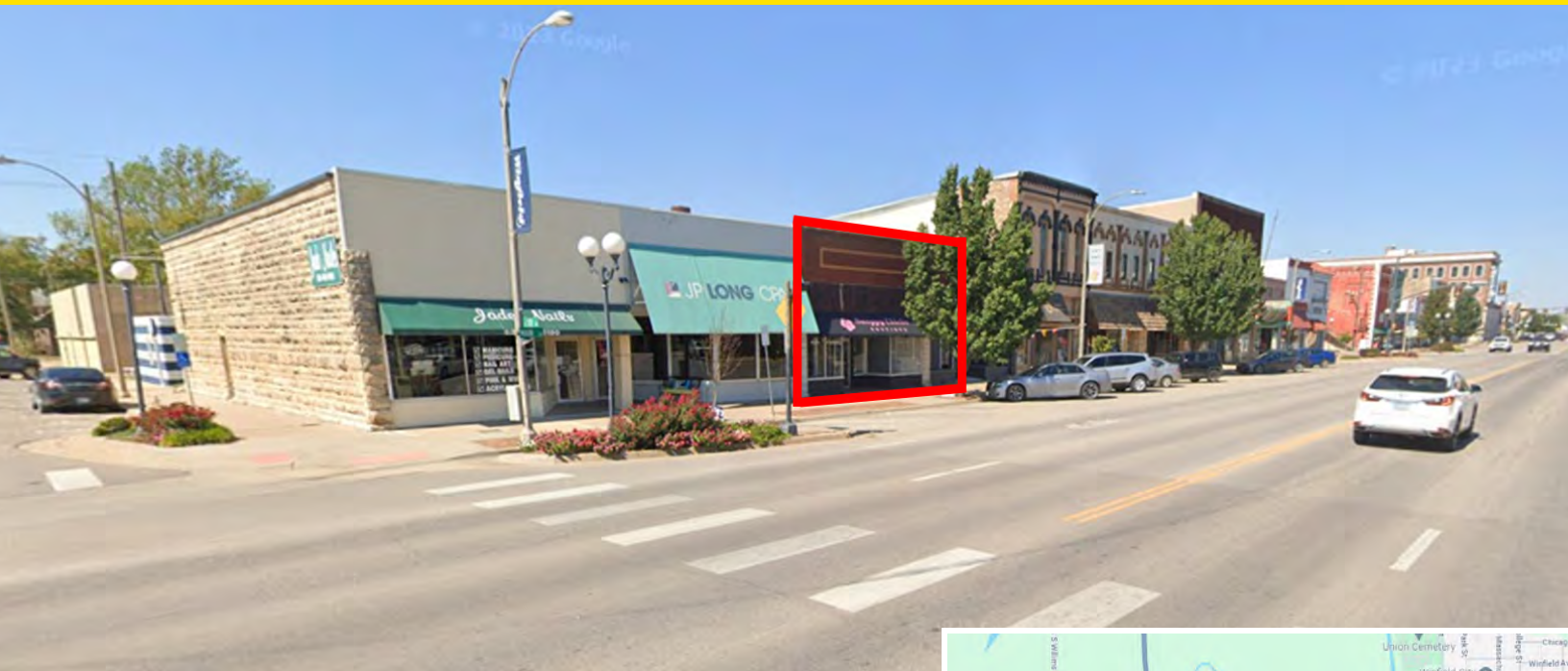


# RETAIL PROPERTY FOR SALE

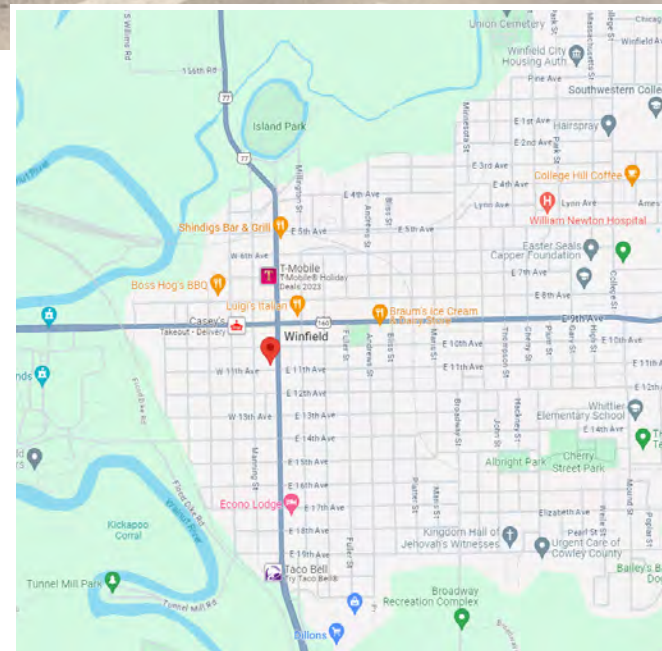


## OFFERING SUMMARY

Sale Price	\$150,000
Number of Units	1
Building Size	1,975 SF
Taxes	Generals: \$3,131.24

## PROPERTY HIGHLIGHTS

- Zoning: C-4
- Lot Size: 0.08 Acres
- Year Built: 1920
- Private parking in rear and ample street parking
- Property is located on main street of the U.B. Round Shopping District of Winfield, KS.
- Large glass storefront, open design modernized with a touch of old world charm, ready to be re-occupied for retail or office use!



**David Leyh, CCIM**  
Associate Broker  
O: 316.262.2442  
dleyh@ccim.net

**Kirk Short**  
Associate Broker  
Keller Williams  
O: 316.371.4669  
kirkshort@wichitahometeam.com



9TH AVE



Memorial Park



Bleus Family Diner

Say When Saloon



First United Methodist Church

**SITE**

11TH AVE

Edward Jones



MAIN ST

