

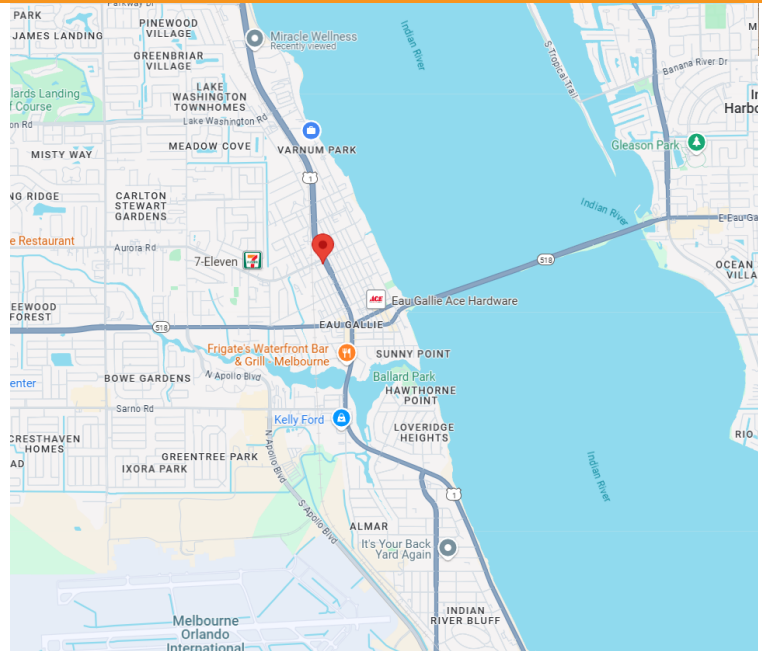
AUTOMOTIVE SHOP SPACE FOR LEASE

1700 N HARBOR CITY BLVD
Melbourne, FL 32935

FOR LEASE



- Automotive Shop Directly on US 1
- Very High Traffic and High Visibility Location
- 1,468 SF Building with Storefront/Showroom, Garage with 2 Roll-Up Doors, 1 Restroom
- Vintage 1961 Construction
- Corner Lot with 40,130 Daily Traffic Counts
- C-2 Zoning
- \$25/SF/YR



JMREALESTATE.COM

Nicole Reed

JM Real Estate, Inc.

Office: 321.242.2882 x 201

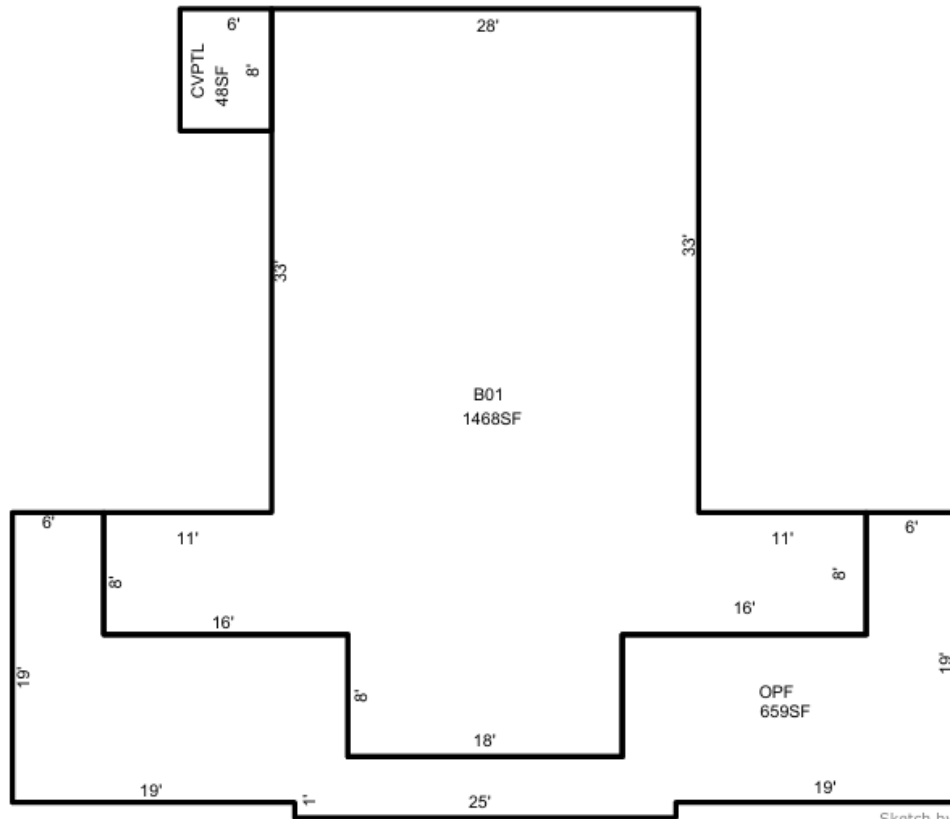
Cell: 314.795.4339

Nicole@JMRealEstate.com

Information contained herein has been obtained from others and is considered to be reliable; however, a prospective purchaser, agent, or lessee is expected to verify all information to their satisfaction. We make no guarantee, warranty, or representations herein. Licensed Real Estate Broker.

AUTOMOTIVE SHOP SPACE FOR LEASE

1700 N HARBOR CITY BLVD Melbourne, FL 32935



DEMOGRAPHICS	1 mile	3 miles	5 miles
2024 Population	7,107	51,890	127,364
2029 Pop Projection	7,764	56,377	138,857
Growth 2024-2029	0.7%	-0.2%	0.3%
Median Age	42.2	44.2	46.2
Bachelor's or Higher	20%	29%	33%
U.S. Armed Forces	6	98	397



JMREALESTATE.COM

Nicole Reed

JM Real Estate, Inc.

Office: 321.242.2882 x 201

Cell: 314.795.4339

Nicole@JMRealEstate.com

Information contained herein has been obtained from others and is considered to be reliable; however, a prospective purchaser, agent, or lessee is expected to verify all information to their satisfaction. We make no guarantee, warranty, or representations herein. Licensed Real Estate Broker.

AUTOMOTIVE SHOP SPACE FOR LEASE

1700 N HARBOR CITY BLVD
Melbourne, FL 32935



JMREALESTATE.COM

Nicole Reed

JM Real Estate, Inc.

Office: 321.242.2882 x 201

Cell: 314.795.4339

Nicole@JMRealEstate.com

Information contained herein has been obtained from others and is considered to be reliable; however, a prospective purchaser, agent, or lessee is expected to verify all information to their satisfaction. We make no guarantee, warranty, or representations herein. Licensed Real Estate Broker.