



HOULIHAN LAWRENCE
COMMERCIAL

510 N BROADWAY

White Plains, NY 10603

Exclusively Represented By:

Jared Stone

Associate Broker

973 204 0107

jstone@houlihanlawrence.com

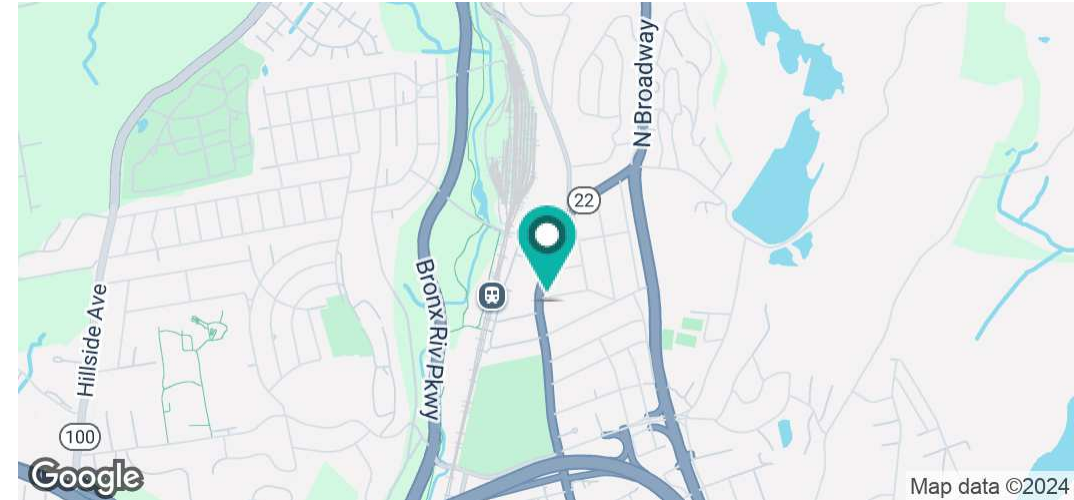
FOR SALE

510 N BROADWAY

White Plains, NY 10603

FOR SALE

Executive Summary



OFFERING SUMMARY

Price	\$1,100,000
Price / GSF	\$293.18
GSF	3,752 SF
# of Floors	3
Site Size	20,473 SF
Parking Spaces	16
Year Built	1924

PROPERTY OVERVIEW

Houlihan Lawrence Commercial is pleased to exclusively present for sale 510 N Broadway in White Plains, NY. This distinguished and well maintained 3,752 SF professional office building presents an ideal prospect for an owner/user in its existing form. Boasting a strategic location in the thriving suburban White Plains area, and zoned RM-1.5, the property offers versatile potential for residential, religious, non-profit, or education uses. Additionally, it is conveniently located near the Metro North North White Plains train station and Bee Line bus service, providing excellent public transportation options. With easy access to major highways including I-287 and I-684, this property is perfectly positioned to maximize connectivity and accessibility for tenants and visitors alike. The property also features 16 parking spaces, further enhancing its appeal for a wide range of uses.

Exclusively Represented By:

Jared Stone

Associate Broker
973 204 0107

jstone@houlihanlawrence.com

Houlihan Lawrence

800 Westchester Ave, Ste. N-517, Rye Brook, NY 10573



HOULIHAN LAWRENCE

COMMERCIAL

We obtained the information above from sources we believe to be reliable. However, we have not verified its accuracy and make no guarantee, warranty or representation about it. It is submitted subject to the possibility of errors, omissions, change of price, rental or other conditions, prior sale, lease or financing, or withdrawal without notice. We include projections, opinions, assumptions or estimates for example only, and they may not represent current or future performance of the property. You and your tax and legal advisors should conduct your own investigation of the property and transaction.

510 N BROADWAY

White Plains, NY 10603

FOR SALE

Additional Photos



Exclusively Represented By:

Jared Stone

Associate Broker

973 204 0107

jstone@houlihanlawrence.com

Houlihan Lawrence

800 Westchester Ave, Ste. N-517, Rye Brook, NY 10573



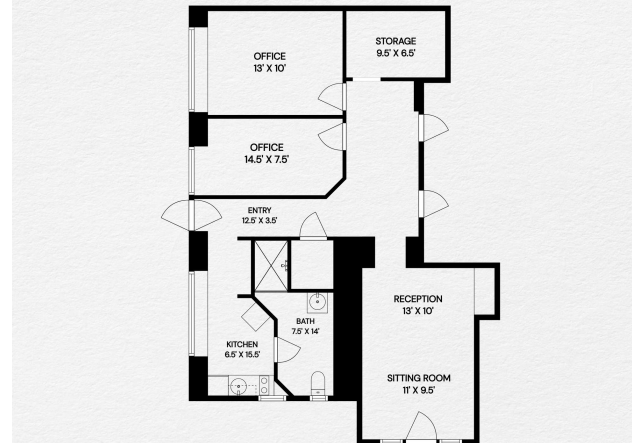
HOULIHAN LAWRENCE

COMMERCIAL

We obtained the information above from sources we believe to be reliable. However, we have not verified its accuracy and make no guarantee, warranty or representation about it. It is submitted subject to the possibility of errors, omissions, change of price, rental or other conditions, prior sale, lease or financing, or withdrawal without notice. We include projections, opinions, assumptions or estimates for example only, and they may not represent current or future performance of the property. You and your tax and legal advisors should conduct your own investigation of the property and transaction.

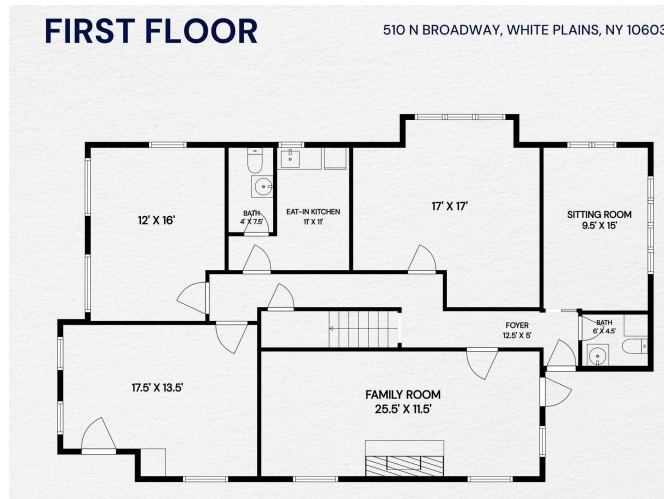
LOWER LEVEL

510 N BROADWAY, WHITE PLAINS, NY 10603



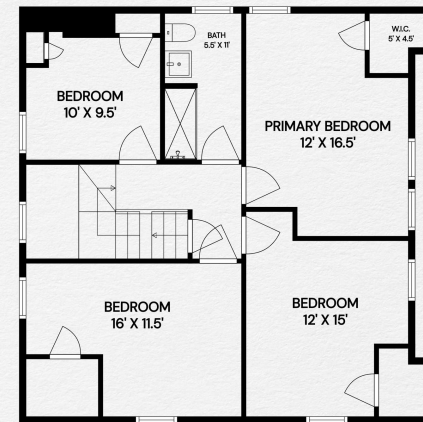
FIRST FLOOR

510 N BROADWAY, WHITE PLAINS, NY 10603



SECOND FLOOR

510 N BROADWAY, WHITE PLAINS, NY 10603



Exclusively Represented By:

Jared Stone

Associate Broker

973.204.0107

jjstone@houlihanlawrence.com

Houlihan Lawrence

800 Westchester Ave, Ste. N-517, Rye Brook, NY 10573



HOULIHAN LAWRENCE

COMMERCIAL

510 N BROADWAY

White Plains, NY 10603

FOR SALE

Additional Photos



Exclusively Represented By:

Jared Stone

Associate Broker

973 204 0107

jstone@houlihanlawrence.com

Houlihan Lawrence

800 Westchester Ave, Ste. N-517, Rye Brook, NY 10573



HOULIHAN LAWRENCE

COMMERCIAL

We obtained the information above from sources we believe to be reliable. However, we have not verified its accuracy and make no guarantee, warranty or representation about it. It is submitted subject to the possibility of errors, omissions, change of price, rental or other conditions, prior sale, lease or financing, or withdrawal without notice. We include projections, opinions, assumptions or estimates for example only, and they may not represent current or future performance of the property. You and your tax and legal advisors should conduct your own investigation of the property and transaction.

510 N BROADWAY

White Plains, NY 10603

FOR SALE

Additional Photos



Exclusively Represented By:

Jared Stone

Associate Broker

973 204 0107

jstone@houlihanlawrence.com

Houlihan Lawrence

800 Westchester Ave, Ste. N-517, Rye Brook, NY 10573



HOULIHAN LAWRENCE

COMMERCIAL

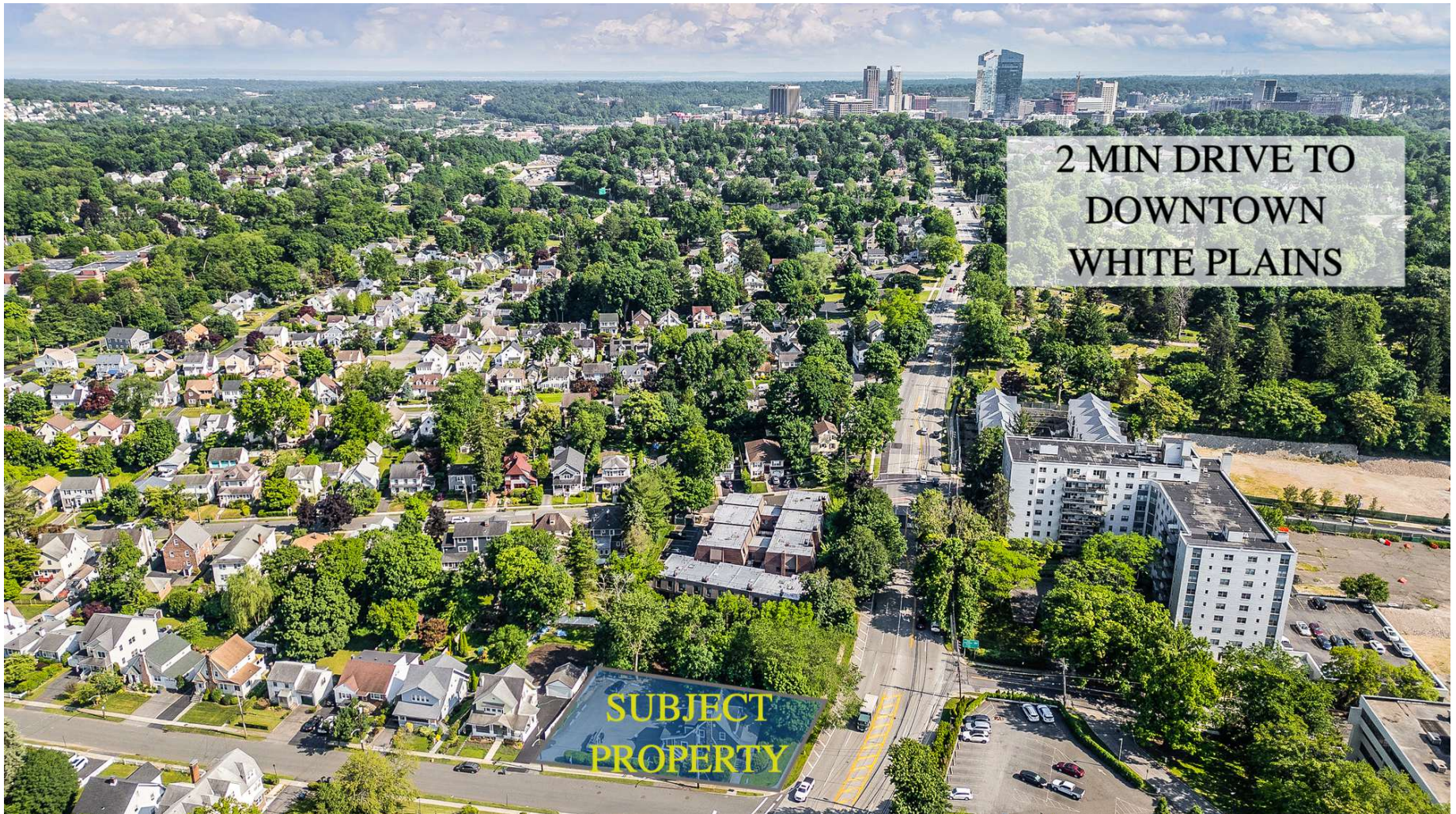
We obtained the information above from sources we believe to be reliable. However, we have not verified its accuracy and make no guarantee, warranty or representation about it. It is submitted subject to the possibility of errors, omissions, change of price, rental or other conditions, prior sale, lease or financing, or withdrawal without notice. We include projections, opinions, assumptions or estimates for example only, and they may not represent current or future performance of the property. You and your tax and legal advisors should conduct your own investigation of the property and transaction.

510 N BROADWAY

White Plains, NY 10603

FOR SALE

Additional Photos



Exclusively Represented By:

Jared Stone

Associate Broker

973 204 0107

jstone@houlihanlawrence.com

Houlihan Lawrence

800 Westchester Ave, Ste. N-517, Rye Brook, NY 10573



HOULIHAN LAWRENCE

COMMERCIAL

We obtained the information above from sources we believe to be reliable. However, we have not verified its accuracy and make no guarantee, warranty or representation about it. It is submitted subject to the possibility of errors, omissions, change of price, rental or other conditions, prior sale, lease or financing, or withdrawal without notice. We include projections, opinions, assumptions or estimates for example only, and they may not represent current or future performance of the property. You and your tax and legal advisors should conduct your own investigation of the property and transaction.

510 N BROADWAY

White Plains, NY 10603

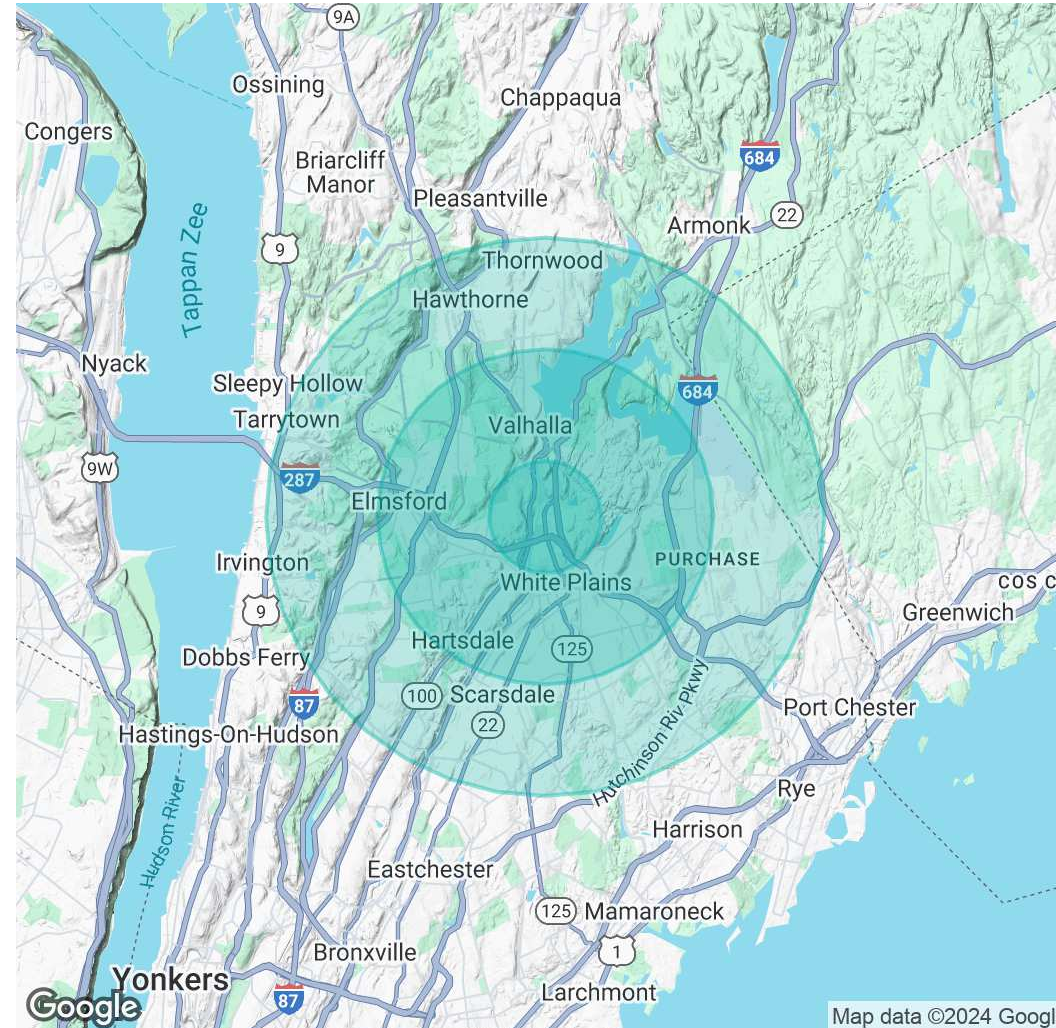
FOR SALE

Demographics Map & Report

POPULATION	1 MILE	3 MILES	5 MILES
Total Population	15,702	100,032	195,771
Average Age	42	43	42
Average Age (Male)	41	41	41
Average Age (Female)	44	44	44

HOUSEHOLDS & INCOME	1 MILE	3 MILES	5 MILES
Total Households	6,045	39,070	71,543
# of Persons per HH	2.6	2.6	2.7
Average HH Income	\$169,057	\$173,494	\$208,820
Average House Value	\$614,693	\$729,643	\$892,393

Demographics data derived from AlphaMap



Exclusively Represented By:

Jared Stone

Associate Broker
973 204 0107

jstone@houlihanlawrence.com

Houlihan Lawrence

800 Westchester Ave, Ste. N-517, Rye Brook, NY 10573



HOULIHAN LAWRENCE

COMMERCIAL

We obtained the information above from sources we believe to be reliable. However, we have not verified its accuracy and make no guarantee, warranty or representation about it. It is submitted subject to the possibility of errors, omissions, change of price, rental or other conditions, prior sale, lease or financing, or withdrawal without notice. We include projections, opinions, assumptions or estimates for example only, and they may not represent current or future performance of the property. You and your tax and legal advisors should conduct your own investigation of the property and transaction.