

## Industrious 4500 East West

SUITES | OFFICES | ACCESS | VIRTUAL

**4500 East-West Hwy, 2nd Floor**  
**Bethesda, MD 20814**

Located just 700 feet from the Bethesda Metro station and steps away from major bus lines and bike paths, 4500 East West offers prime accessibility, no matter your mode of transportation. The building is two blocks from the upcoming, new Purple Line transit stop, serving downtown Bethesda.

### 24K

Rentable Sqft

### 14

Conference Rooms

### 42

Offices

### 7

Suites

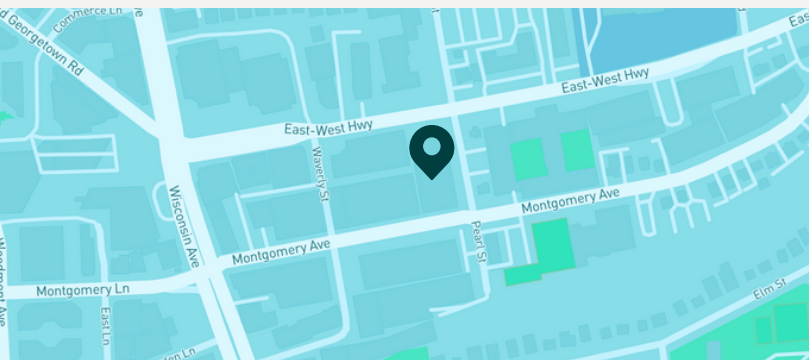


### INCLUDED SERVICES

- |                          |                             |
|--------------------------|-----------------------------|
| Dedicated On-Site Staff  | Wellness Room               |
| Daily Breakfast & Snacks | Unlimited Color Printing    |
| Craft Coffee & Tea       | Fast, Secure Wi-Fi          |
| Mail and Packaging       | Office Supplies             |
| Community Events         | Professional-Grade Cleaning |
| 24/7 Access              | Weekly Happy Hours          |

### BUILDING DETAILS

- |                   |                      |
|-------------------|----------------------|
| Outdoor Space     | Bike Storage         |
| Renovated Lobby   | Concierge Services   |
| Dining Options    | 24/7 Security        |
| Retail Options    | Service Animals Only |
| Fitness Center    |                      |
| Conference Center |                      |



### TRANSIT

- |                                |           |
|--------------------------------|-----------|
| Bethesda Metro Station         | 700 ft    |
| J2 Bus                         | 0.2 miles |
| 34 Bus                         | 0.3 miles |
| Parking (See back for details) | On-site   |

## LEGEND

- Access Office
- Small Office
- Medium Office
- Large Office
- XLarge Office
- Executive
- Office Suite

## SHARED MEETING ROOMS

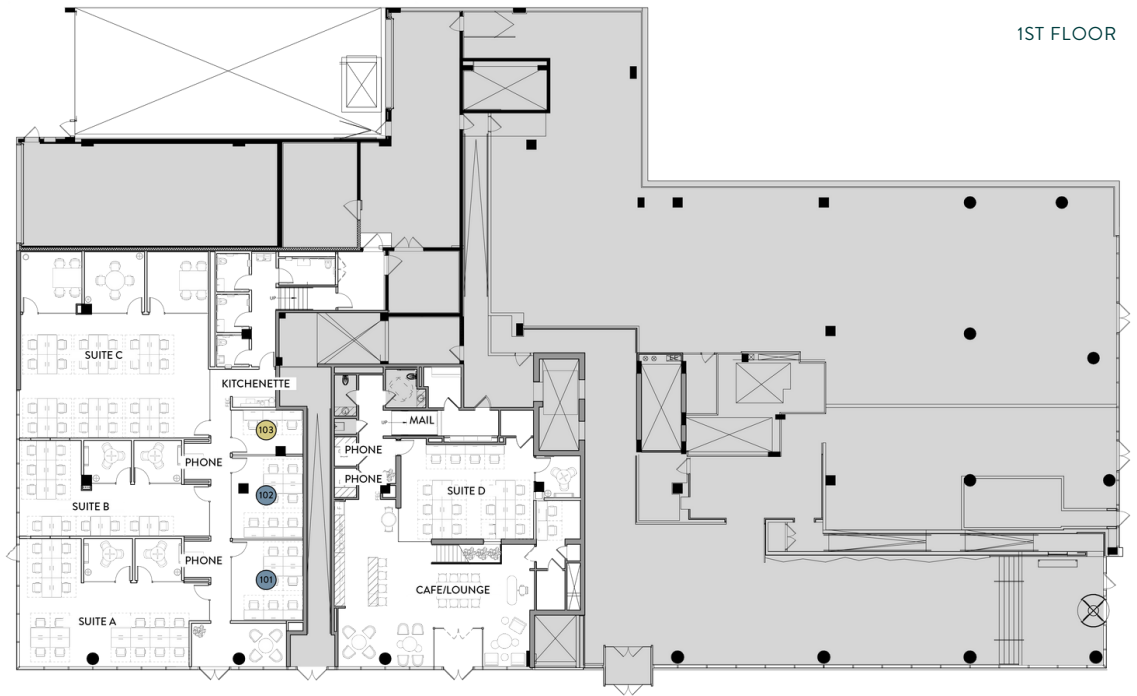
Phone Booths	11
Conference Rooms	3

## SUITE SPECS

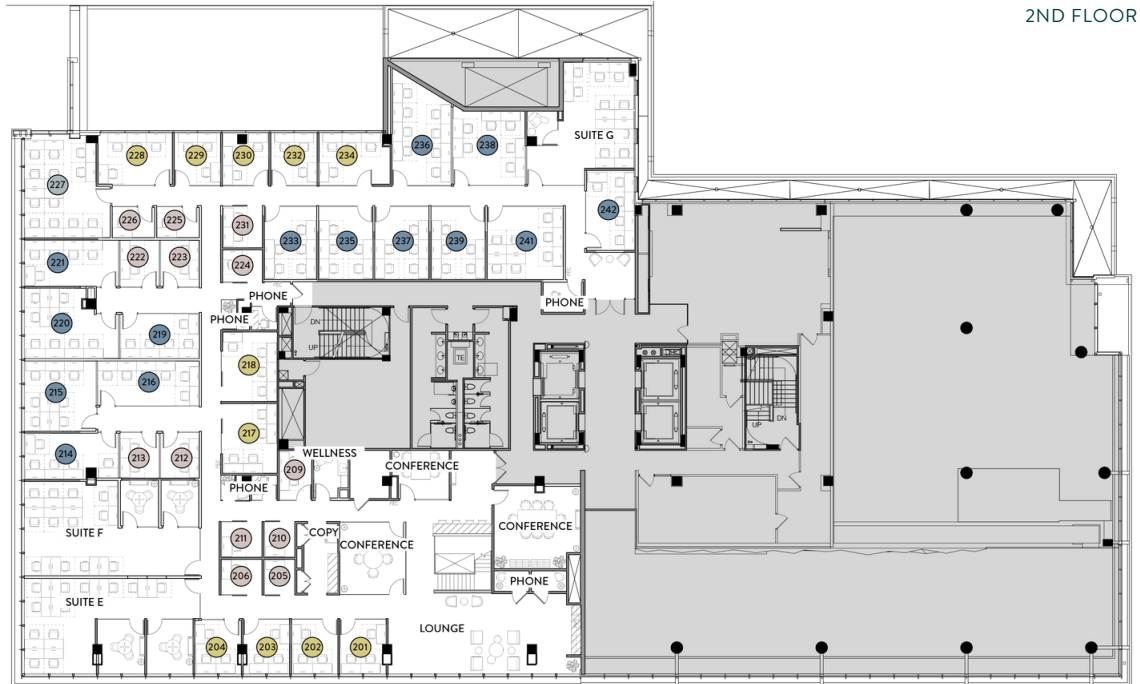
Suite	LSF	Workstations*
A	941	24
B	726	18
C	1480	36
D	691	19
E	708	18
F	732	18
G	453	13

\*Max capacity. Assumes 48"x24" desk.

1ST FLOOR



2ND FLOOR



## PARKING

90 Unreserved - Free  
10 Reserved - \$50/month