

334-336 New York Ave | Huntington, NY 11743  
\$2,000,000



📍 125 Newtown Rd, Suite 300  
Plainview, NY 11803  
☎ (516) 864.8000  
🌐 [www.SilberProperties.com](http://www.SilberProperties.com)

# Building Info

GLA:	2,934 Sq. Ft.
Retail Store:	2,000 Sq. Ft.
Apartment:	1 bedroom, 1 Bath 650 Sq. Ft.
Lot Size:	0.03 Acres
Year Built:	1943
Zoning:	C6
Taxes:	\$32,712
Price:	\$2,000,000



## INVESTMENT HIGHLIGHTS

- Mixed use building located in the heart of Huntington.
- The Jewelry store has an upstairs office space of approximately 400 sq ft and includes a bathroom kitchenette additional storage space and more
- Upside potential as you can build an additional apartment
- The property is positioned less than 1 block from The Paramount Theatre



Information Shown Is Reported To Be From Reliable Sources. No Representation Is Made To The Accuracy Thereof And Is Submitted Subject To Change In Price, Omissions, Errors, Prior Sale Or Withdrawal Without Notice

125 Newtown Rd, Suite 300  
 Plainview, NY 11803  
 (516) 864.8000  
[www.SilberProperties.com](http://www.SilberProperties.com)

MATTRESS FIRM

25A

MAIN ST - 20,919 VPD

Bank of America



NEW YORK AVE - 16,562 VPD



WELLS FARGO

NEW ST

110

110

Information shown is reported to be from reliable sources. No representation is made to the accuracy thereof and is submitted subject to change in price, omissions, errors, prior sale or withdrawal without notice.



125 Newtown Rd, Suite 300  
Plainview, NY 11803  
(516) 864.8000  
www.SilberProperties.com

# NEIGHBORHOOD AERIAL

\$2,000,000



Information Provided Reported to Be From Reliable Sources. No Representation is Made to The Accuracy, Completeness and is Limited Subject to Change in Price, Conditions, Errors, Prior Sale & Withdrawal Without Notice.

📍 125 Newtown Rd, Suite 300  
Plainview, NY 11803  
☎ (516) 864.8000  
🌐 [www.SilberProperties.com](http://www.SilberProperties.com)

# DEMOGRAPHICS

\$2,000,000

POPULATION:	1 MILE	3 MILE	5 MILE
2020 POPULATION	11,196	68,075	137,912
2025 POPULATION	10,696	64,428	132,654
2030 POPULATION PROJECTION	10,572	63,540	131,358
ANNUAL GROWTH 2020-2025	-0.90%	-1.10%	-0.80%
ANNUAL GROWTH 2025-2030	-0.20%	-0.30%	-0.20%

WHITE	8,660	40,523	88,923
BLACK	331	3,604	6,611
AMERICAN INDIAN/ALASKAN NATIVE	14	166	245
ASIAN	354	2,647	9,956
HAWAIIAN & PACIFIC ISLANDER	3	13	17
TWO OR MORE RACES	1,334	17,474	26,902
HISPANIC ORIGIN	1,079	17,215	25,698

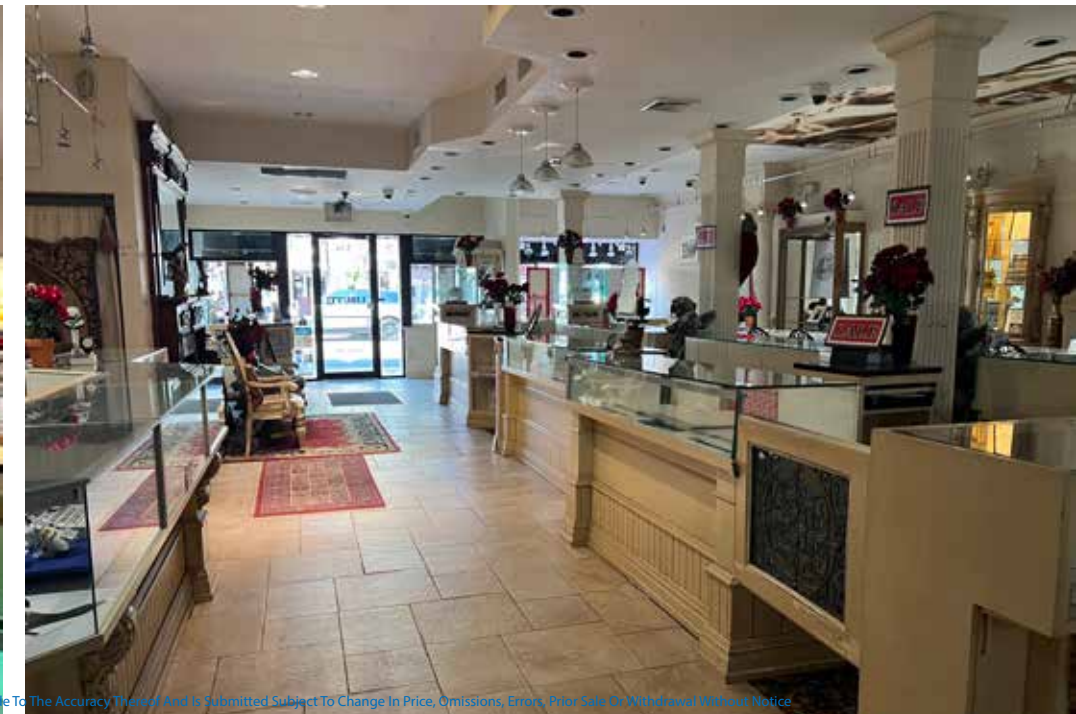
2020 HOUSEHOLDS	4,857	23,213	47,122
2025 HOUSEHOLDS	4,558	21,778	44,779
2030 HOUSEHOLD PROJECTION	4,489	21,443	44,233
ANNUAL GROWTH 2020-2025	-0.40%	-0.20%	-0.10%
ANNUAL GROWTH 2025-2030	-0.30%	-0.30%	-0.20%
OWNER OCCUPIED HOUSEHOLDS	3,201	16,761	36,392
RENTER OCCUPIED HOUSEHOLDS	1,288	4,682	7,841
AVG HOUSEHOLD INCOME	\$177,307	\$174,246	\$182,049
MEDIAN HOUSEHOLD INCOME	\$155,046	\$152,326	\$162,811

Information Shown Is Reported To Be From Reliable Sources. No Representation Is Made To The Accuracy Thereof And Is Submitted Subject To Change In Price, Omissions, Errors, Prior Sale Or Withdrawal Without Notice



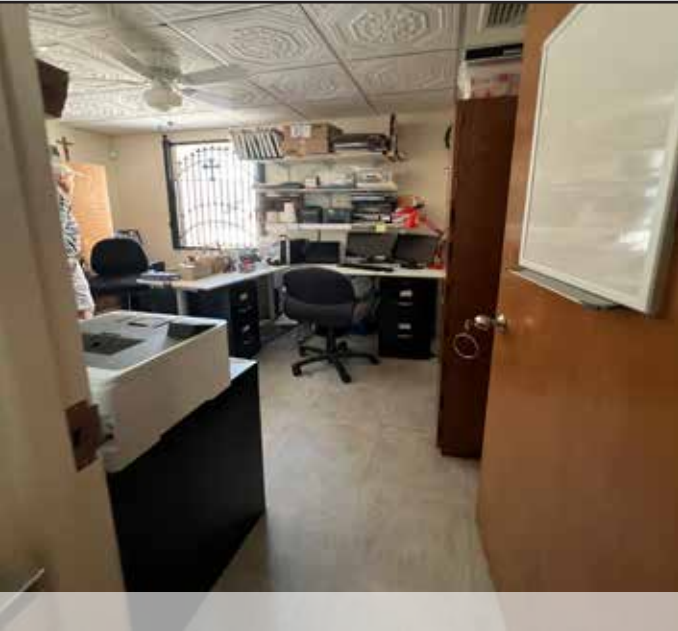
📍 125 Newtown Rd, Suite 300  
Plainview, NY 11803  
📞 (516) 864.8000  
🌐 [www.SilberProperties.com](http://www.SilberProperties.com)





Information Shown Is Reported To Be From Reliable Sources. No Representation Is Made To The Accuracy Thereof And Is Submitted Subject To Change In Price, Omissions, Errors, Prior Sale Or Withdrawal Without Notice

📍 125 Newtown Rd, Suite 300  
Plainview, NY 11803  
📞 (516) 864.8000  
🌐 www.SilberProperties.com



Jewelry Store Mezzanine

Apartment



Information Shown Is Reported To Be From Reliable Sources, No Representation Is Made To The Accuracy Thereof And Is Submitted Subject To Change In Price, Omissions, Errors, Prior Sale Or Withdrawal Without Notice



125 Newtown Rd, Suite 300  
Plainview, NY 11803  
(516) 864.8000  
www.SilberProperties.com



The Town of Huntington is one of ten towns in Suffolk County, New York, United States. Founded in 1653, it is located on the north shore of Long Island in northwestern Suffolk County, with Long Island Sound to its north and Nassau County adjacent to the west. Huntington is part of the New York metropolitan area. As of the United States 2010 Census, the town population was 203,264.

Huntington is the only township in the United States to ban self-service gas stations at the town level. Along with New Jersey, they are the only two places in the country where full-service gas stations are compulsory. In 1653, three men from Oyster Bay, Richard Holbrook, Robert Williams and Daniel Whitehead, purchased a parcel of land from the Matinecock tribe. This parcel has since come to be known as the "First Purchase" and included land bordered by Cold Spring Harbor on the west, Northport Harbor on the east, what is now known as Old Country Road to the south and Long Island Sound to the north. The three men immediately turned the land over to the settlers who had already been living there.

George Bradford Brainerd. Street, Huntington, Long Island, May 1907. Collodion silver glass wet plate negative. Brooklyn Museum.

George Bradford Brainerd. Street, Huntington, Long Island, ca. 1872–1887. Collodion silver glass wet plate negative. Brooklyn Museum.

From that initial settlement, Huntington grew over subsequent years to include all of the land presently comprising the modern Towns of Huntington and Babylon. The southern part of the town was formally separated to create Babylon in 1872.

Information Shown Is Reported To Be From Reliable Sources. No Representation Is Made To The Accuracy Thereof And Is Submitted Subject To Change In Price, Omissions, Errors, Prior Sale Or Withdrawal Without Notice.



📍 125 Newtown Rd, Suite 300  
Plainview, NY 11803  
📞 (516) 864.8000  
| [www.SilberProperties.com](http://www.SilberProperties.com)

334-336 New York Ave | Huntington, NY 11743  
\$2,000,000

FOR MORE INFORMATION



125 Newtown Rd, Suite 300  
Plainview, NY 11803  
Main | (516) 864.8000  
[www.SilberProperties.com](http://www.SilberProperties.com)