

129 W 20TH ST

PRIME CHELSEA • RETAIL AVAILABLE



PREMIER EQUITIES

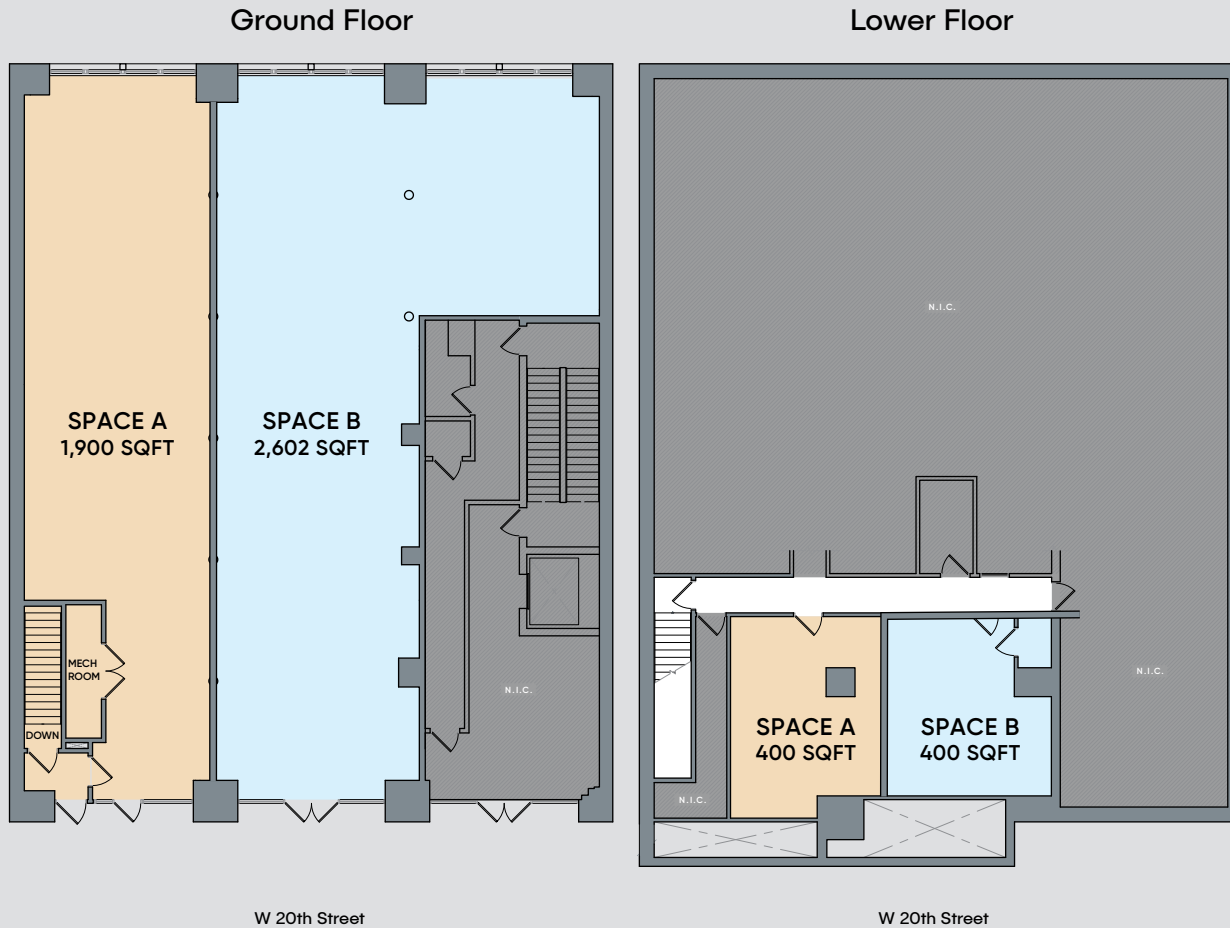
DAVID JACOBI

P 212 421 3634

M 917 992 9215

david@premierequities.com

Retail Property Specs



129 W 20TH ST

PRIME CHELSEA • RETAIL AVAILABLE

LOCATION

North Block between 6th and 7th Avenue

SPACE A

Ground Floor:..1,900 SF

Lower Level:..... 400 SF

SPACE B

Ground Floor:.... 2,602 SF

Lower Level:..... 400 SF

POSSESSION

Immediate

FRONTAGE

47 FT on W 20th Street

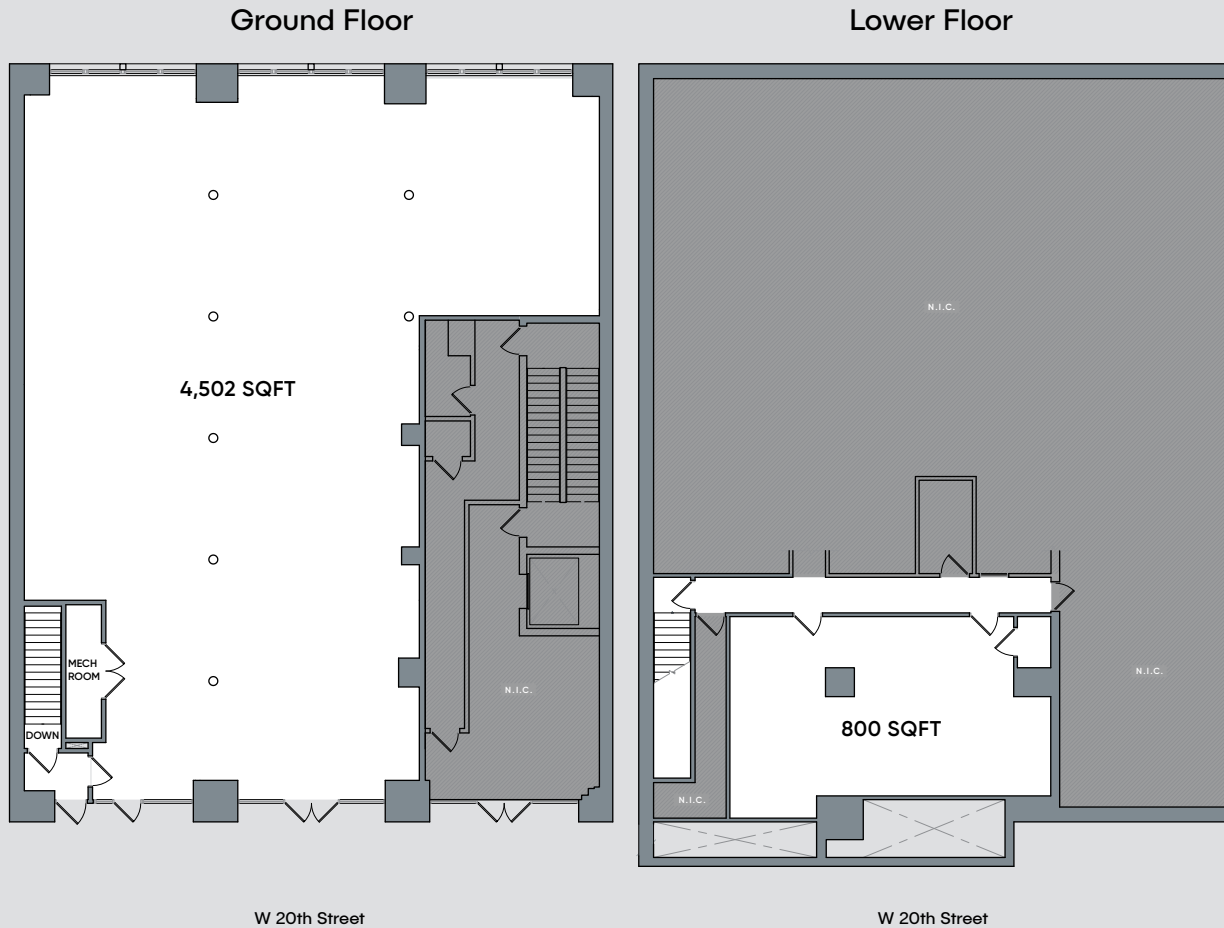
CEILING HEIGHT

Ground Floor: 13 feet

Lower Level: 11 feet

- Will be delivered in white box condition with new HVAC Unit
- Tremendous Frontage with 2 separate entrances. Space is divisible
- Steps away from a brand new park built by NYC 'Chelsea Green'
- Space zoned for school use

Retail Property Specs



129 W 20TH ST

PRIME CHELSEA • RETAIL AVAILABLE

LOCATION

North Block between 6th and 7th Avenue

SPACE

Ground Floor: 4,502 SF

Lower Level: 800 SF

POSSESSION

Immediate

FRONTAGE

47 FT on W 20th Street

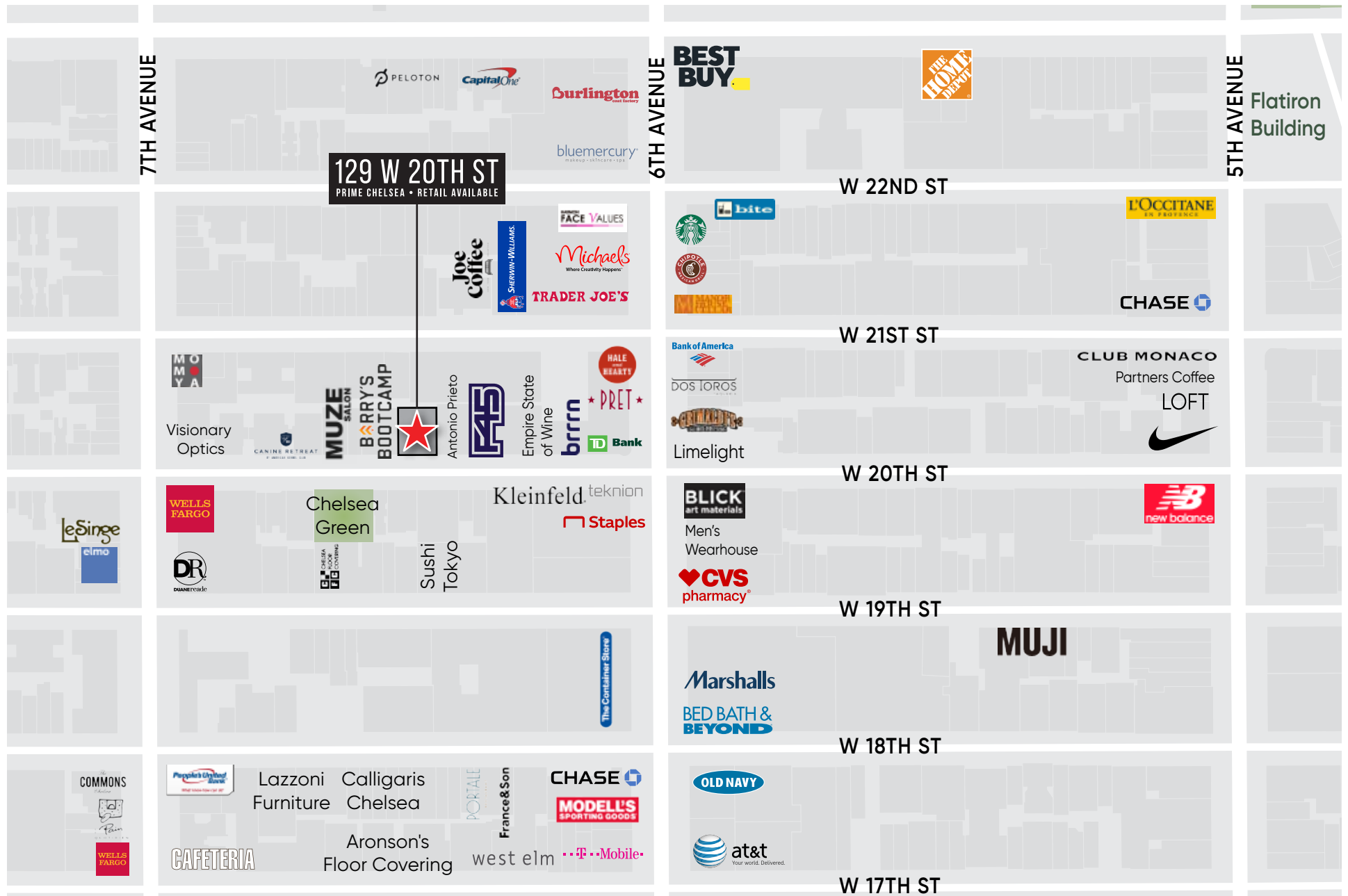
CEILING HEIGHT

Ground Floor: 13 feet

Lower Level: 11 feet

- Will be delivered in white box condition with new HVAC Unit
- Tremendous Frontage with 2 separate entrances. Space is divisible
- Steps away from a brand new park built by NYC 'Chelsea Green'
- Space zoned for school use

Neighborhood Retailers



Chelsea Green, opened in 2019, was the first new park built in Chelsea in 40 years. The park features an engaging play area with shaded seating, along with a lawn area made from synthetic turf. In keeping with the artistic feel of the neighborhood, an area of the park is home to performances and displays of public art.

129 W 20TH ST
PRIME CHELSEA • RETAIL AVAILABLE



FOR MORE INFORMATION CONTACT:

DAVID JACOBI

P 212 421 3634

M 917 992 9215

david@premierequities.com



PREMIER EQUITIES

1151 Broadway, Suite 2S

New York, NY 10001