



# DTSP Bar/Restaurant

330 1<sup>st</sup> Ave S St. Petersburg, FL 33701

💰 Lease Rate: **Contact For Pricing**

📏 Unit Size: **3,924 SF**

✅ Available: **Now**



**Jay Billings**

*Commercial Specialist*

(636) 219-9156 ☎

[jay@cprteam.com](mailto:jay@cprteam.com) ✉

**Harrison Gault**

*Sale Associate*

(727) 677-8070 ☎

[harrison@cprteam.com](mailto:harrison@cprteam.com) ✉



0.925

0.40

0.30

1.00

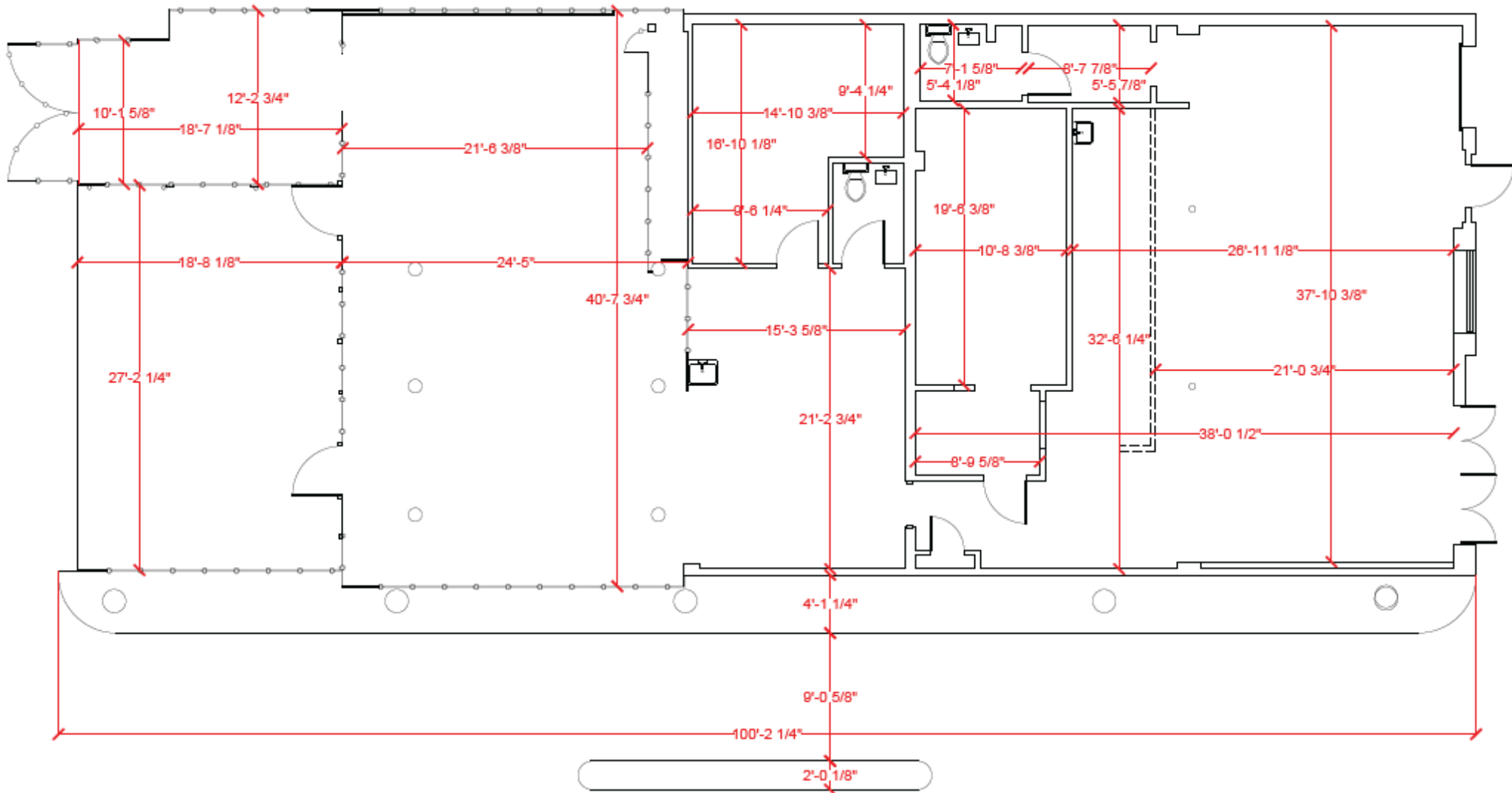
0.50



**330 1<sup>st</sup> Ave S St. Petersburg, FL 33701**

**Positioned just off 1st Avenue in the heart of Downtown St. Petersburg,** this fully built-out restaurant and bar space offers a rare opportunity to establish a presence in one of Florida's most active and fast-growing urban markets. **Surrounded by a dense mix of luxury residential developments, including the nearby 400 Central Residences, and major waterfront attractions such as the St. Pete Pier,** the property benefits from consistent foot traffic driven by both local residents and tourism. The immediate area continues to see significant growth, with thousands of new residential units being delivered nearby, further increasing demand for high-quality dining and nightlife concepts.

# Floorplan



# Highlights



**3,924 SF Of Indoor & Outdoor Restaurant/Bar Space**



**Layout Supports Sports Bar, Cocktail Lounge, Full-Service Restaurant, Cafe and Hybrid Nightlife Concept**



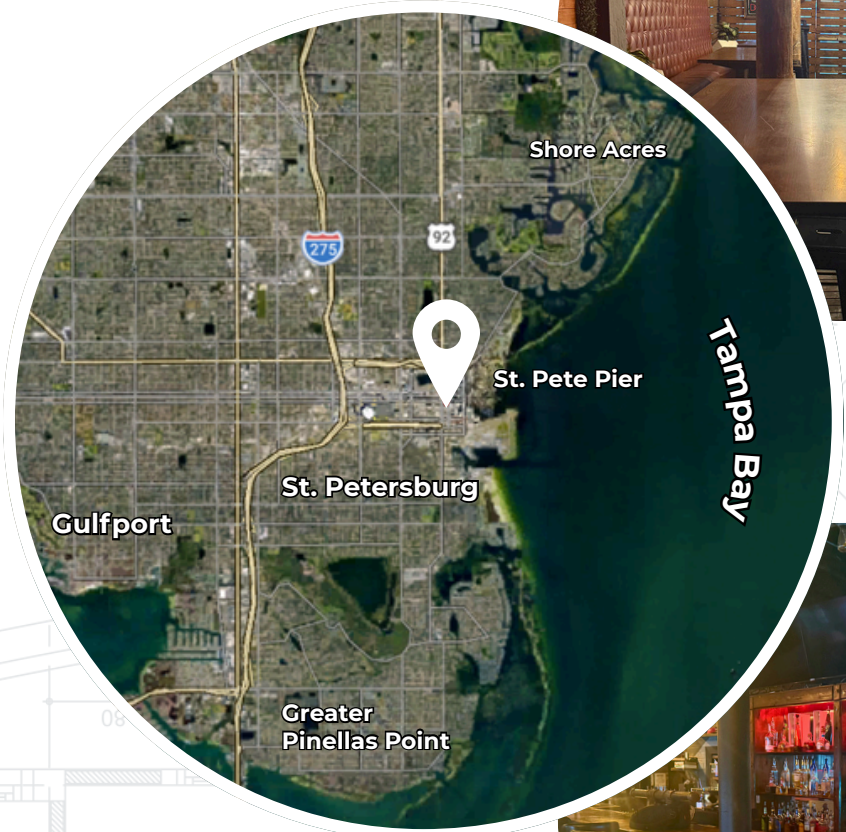
**Large Covered Patio With Retractable Roof**



**Downtown Residential Units: 9;400  
Additional Units Under Construction: 8,050**



**Walking Distance To Beach Drive and St Pete Pier**



*Information herein is not warranted and subject to change without notice. We assume no liabilities for errors and omissions.*

# Listing Team



**Jay Billings**

*Commercial Specialist*

☎ (636) 219-9156

✉ [jay@cprteam.com](mailto:jay@cprteam.com)



**Harrison Gault**

*Sale Associate*

☎ (727) 677-8070

✉ [harrison@cprteam.com](mailto:harrison@cprteam.com)

☎ 727-822-4715

🌐 [www.cprteam.com](http://www.cprteam.com)

🔗 [CommercialPartnersRealty](https://www.commercialpartnersrealty.com)