

# 661 E. ALTAMONTE DRIVE - SUITE 231

Altamonte Medical Plaza | Altamonte Springs, FL 32701

3,467 SF MEDICAL OFFICE CONDO FOR SALE



**Amy Calandrino, CCIM, SIOR**  
Director  
+1 407 492 0433  
[amy.calandrino@cushwake.com](mailto:amy.calandrino@cushwake.com)



©2025 Cushman & Wakefield. All rights reserved. The information contained in this communication is strictly confidential. This information has been obtained from sources believed to be reliable but has not been verified. NO WARRANTY OR REPRESENTATION, EXPRESS OR IMPLIED, IS MADE AS TO THE CONDITION OF THE PROPERTY (OR PROPERTIES) REFERENCED HEREIN OR AS TO THE ACCURACY OR COMPLETENESS OF THE INFORMATION CONTAINED HEREIN, AND SAME IS SUBMITTED SUBJECT TO ERRORS, OMISSIONS, CHANGE OF PRICE, RENTAL OR OTHER CONDITIONS, WITHDRAWAL WITHOUT NOTICE, AND TO ANY SPECIAL LISTING CONDITIONS IMPOSED BY THE PROPERTY OWNER(S). ANY PROJECTIONS, OPINIONS OR ESTIMATES ARE SUBJECT TO UNCERTAINTY AND DO NOT SIGNIFY CURRENT OR FUTURE PROPERTY PERFORMANCE.

**CUSHMANWAKEFIELD.COM**



# 661 E. ALTAMONTE DRIVE - SUITE 231

Altamonte Medical Plaza | Altamonte Springs, FL 32701

## PROPERTY DESCRIPTION

## Medical Office Condo For Sale

This 3,467 SF medical office is located within the AdventHealth Altamonte Springs campus, offering a prime opportunity for healthcare professionals seeking a high-visibility, convenient location. The suite is fully built-out and move-in ready, featuring a versatile layout with specialized medical infrastructure suitable for a variety of healthcare practices.

The floorplan includes nine private offices and nine clinic/exam rooms, along with procedure spaces, nurse stations, restrooms, and a welcoming waiting area. Ample storage and administrative space support efficient daily operations, while the design ensures smooth patient flow and a professional environment for both staff and visitors.

Directly adjacent to AdventHealth, this medical office provides seamless access to the hospital's state-of-the-art facilities, making it ideal for medical practitioners who need to collaborate closely with hospital staff or wish to benefit from increased patient referrals. The office is filled with natural light, creating a professional and welcoming atmosphere.

OFFERING SUMMARY		DEMOGRAPHICS	0.3 MILES	0.5 MILES	1 MILE
SALE PRICE	\$1,250,000	TOTAL HOUSEHOLDS	374	1,367	6,214
BUILDING SIZE	3,467 SF	TOTAL POPULATION	728	2,624	12,528
		AVERAGE HH INCOME	\$82,450	\$85,568	\$85,251



# 661 E. ALTAMONTE DRIVE - SUITE 231

Altamonte Medical Plaza | Altamonte Springs, FL 32701

## FLOOR PLAN

Medical Office Condo For Sale





# 661 E. ALTAMONTE DRIVE - SUITE 231

Altamonte Medical Plaza | Altamonte Springs, FL 32701

LOCATION MAP

Medical Office Condo For Sale



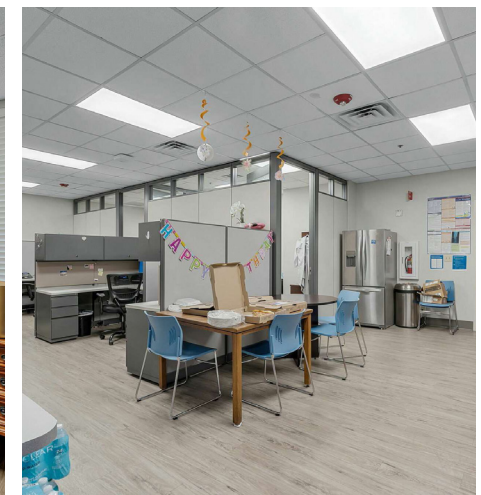
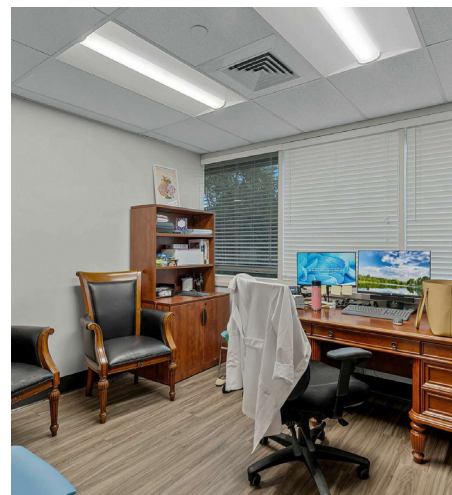
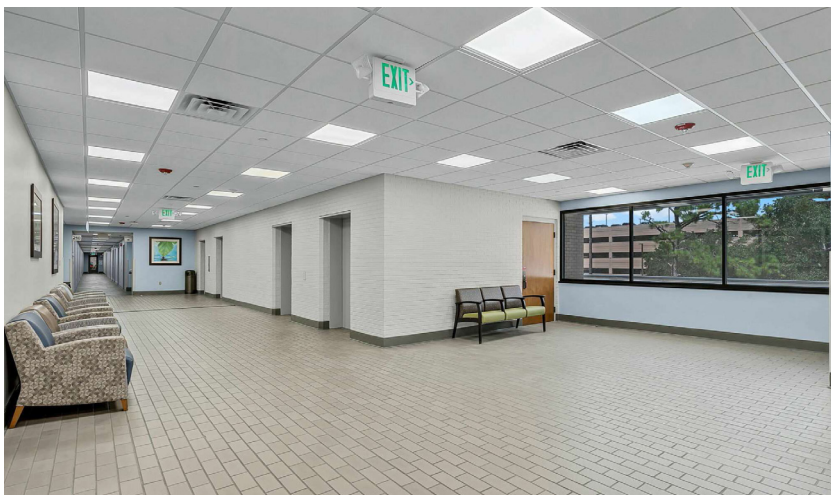
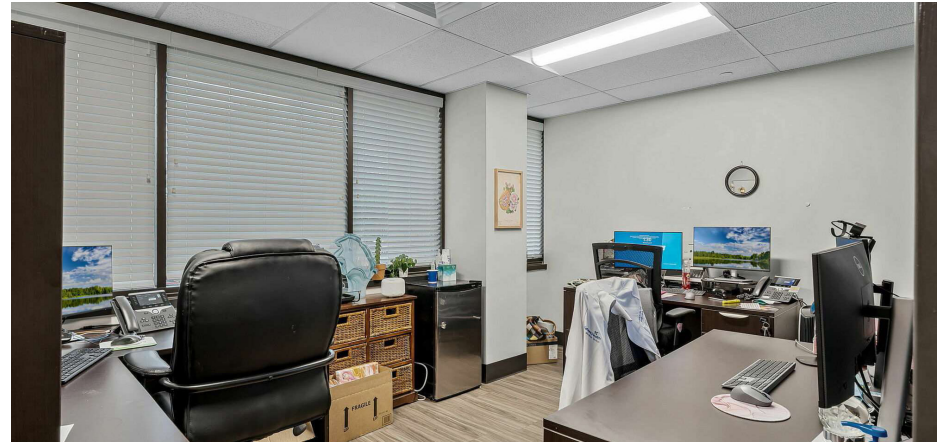


# 661 E. ALTAMONTE DRIVE - SUITE 231

Altamonte Medical Plaza | Altamonte Springs, FL 32701

## PHOTOS

Medical Office Condo For Sale

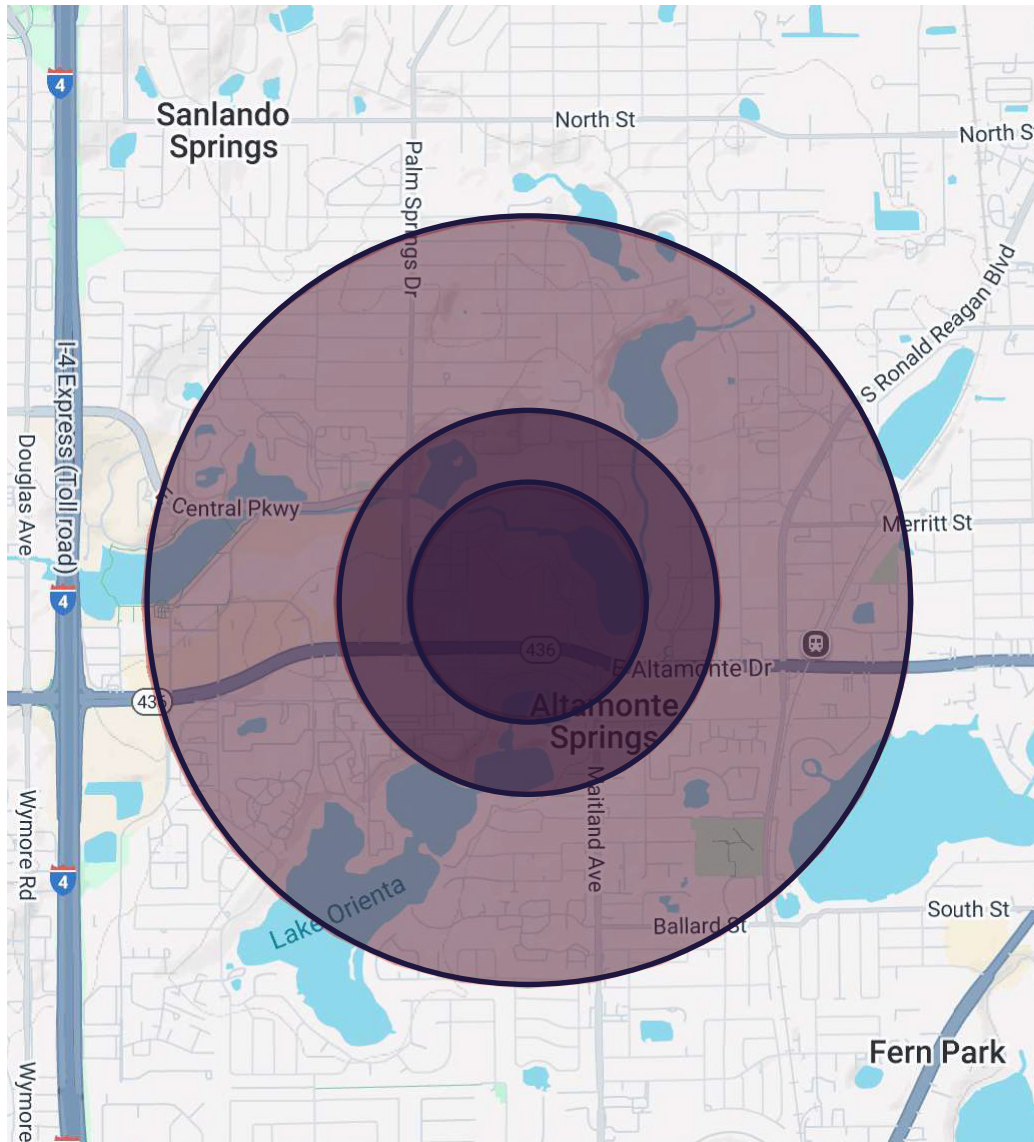


# 661 E. ALTAMONTE DRIVE - SUITE 231

Altamonte Medical Plaza | Altamonte Springs, FL 32701

## RADIUS MAP

Medical Office Condo For Sale



POPULATION	0.3 MILES	0.5 MILES	1 MILE
TOTAL POPULATION	728	2,624	12,528
AVERAGE AGE	48	47	45
AVERAGE AGE (MALE)	45	44	42
AVERAGE AGE (FEMALE)	50	49	47

POPULATION	0.3 MILES	0.5 MILES	1 MILE
TOTAL HOUSEHOLDS	374	1,367	6,214
# OF PERSONS PER HH	1.9	1.9	2
AVERAGE HH INCOME	\$82,450	\$85,568	\$85,251
AVERAGE HOUSE VALUE	\$296,227	\$314,065	\$326,672

# 661 E. ALTAMONTE DRIVE - SUITE 231

Altamonte Springs, FL 32701

3,467 SF MEDICAL OFFICE CONDO FOR SALE

**Amy Calandrino, CCIM, SIOR** / Director / +1 407 492 0433 / [amy.calandrino@cushwake.com](mailto:amy.calandrino@cushwake.com)

**CUSHMANWAKEFIELD.COM**



©2025 Cushman & Wakefield. All rights reserved. The information contained in this communication is strictly confidential. This information has been obtained from sources believed to be reliable but has not been verified. NO WARRANTY OR REPRESENTATION, EXPRESS OR IMPLIED, IS MADE AS TO THE CONDITION OF THE PROPERTY (OR PROPERTIES) REFERENCED HEREIN OR AS TO THE ACCURACY OR COMPLETENESS OF THE INFORMATION CONTAINED HEREIN, AND SAME IS SUBMITTED SUBJECT TO ERRORS, OMISSIONS, CHANGE OF PRICE, RENTAL OR OTHER CONDITIONS, WITHDRAWAL WITHOUT NOTICE, AND TO ANY SPECIAL LISTING CONDITIONS IMPOSED BY THE PROPERTY OWNER(S). ANY PROJECTIONS, OPINIONS OR ESTIMATES ARE SUBJECT TO UNCERTAINTY AND DO NOT SIGNIFY CURRENT OR FUTURE PROPERTY PERFORMANCE.