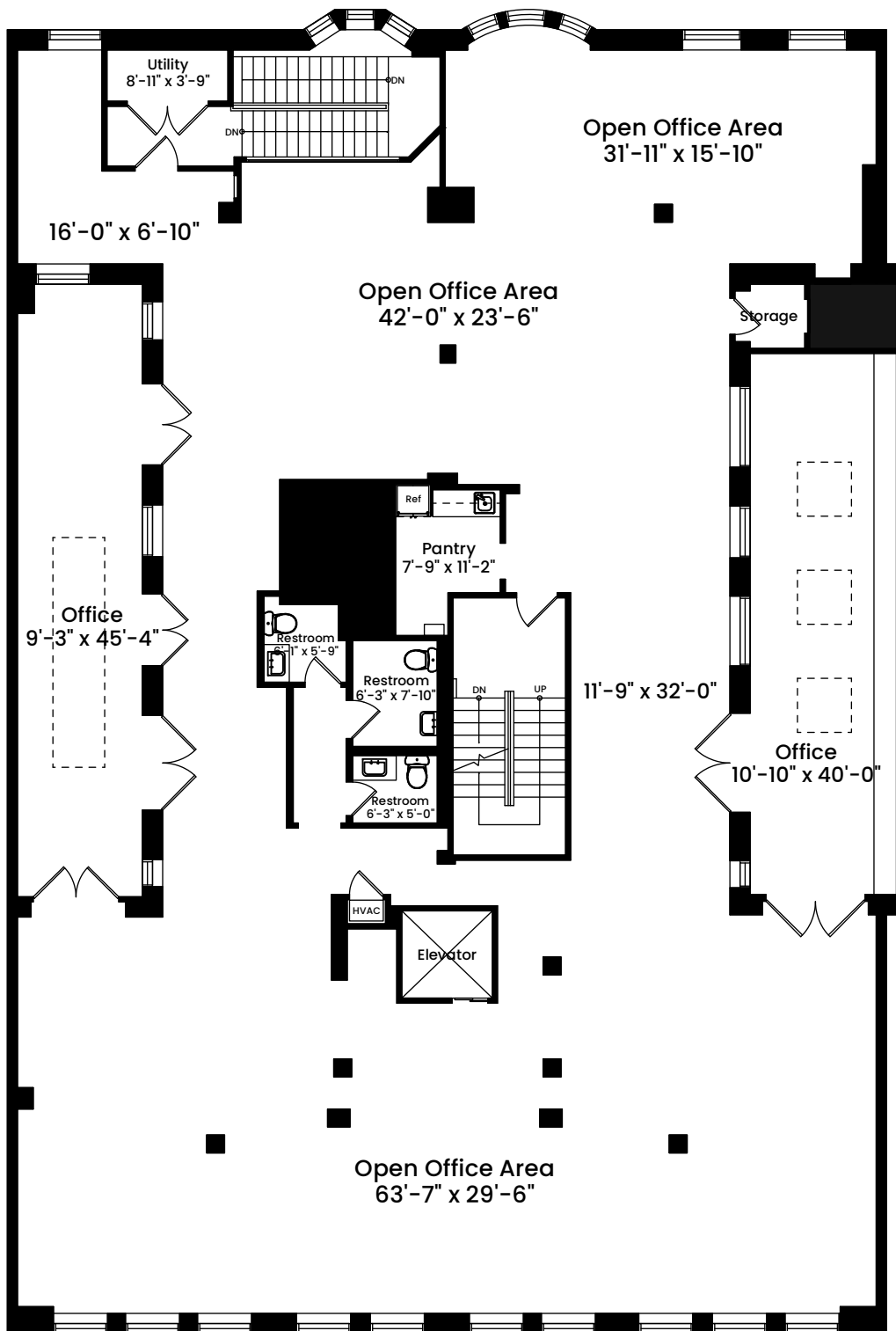


755 Boylston Street | Boston, MA 02116

SECOND FLOOR
CEILING HEIGHT 9'-8"



AREA CALCULATIONS

Total Gross Unit Area 5,813 SF

Architecturally drafted in April 2024 by:
National Floor Plans (800) 328-0217
Associate Member | American Institute of Architects
Contact www.nationalfloorplans.com for .dwg AutoCAD files
or square footage questions about this property.



1 1 2 4 8
Graphic Scale

Dimensions are not guaranteed and are provided for informational purposes only.
Individual room dimensions are not used to calculate overall square footage.
National Floor Plans follows ANSI guidelines for calculating square footage.