

OFFERING SUMMARY

LOT SIZE:	5.69 Acres
ZONING:	C1
MARKET:	Atlanta
SUBMARKET:	East Point
APN:	14 0091 LL0598, 0091 LL0564,

PROPERTY OVERVIEW

Located in the heart of Atlanta, 2200 Reynolds Drive presents a prime opportunity for land development. Zoned C1 and comprising of two parcels, this property offers excellent highway visibility, making it an ideal location for a variety of commercial or residential ventures. With its strategic location and versatile zoning, this property is well-suited for businesses seeking an advantageous position within the Atlanta market.

Property is located within a Community Development Impact Area (CDIA) via City of Atlanta - see additional information under documents tab.

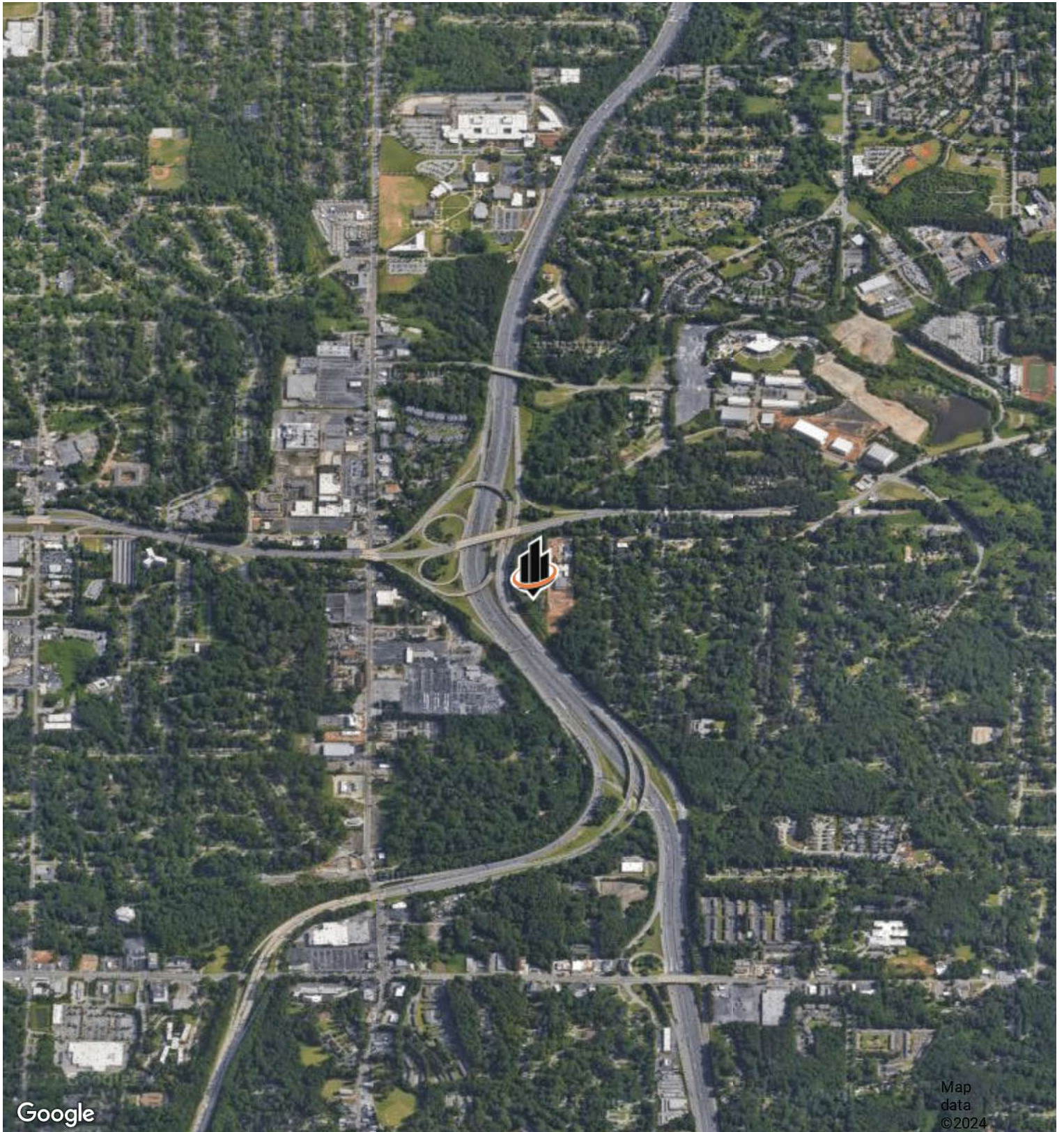
PROPERTY HIGHLIGHTS

- Zoned C1
- City of Atlanta
- Visibility to I-75/I-85
- Sewer On-Site
- Public Street Access

JAKE CREVISTON

O: 770.992.5112
j.creviston@svn.com
GA #365989

RETAILER MAP



JAKE CREVISTON

O: 770.992.5112
j.creviston@svn.com
GA #365989