

9672 S 700 E #203, Sandy, UT 84070



**FOR
SALE
OR LEASE**

OFFERED AT
\$250,000

SECOND FLOOR OFFICE CONDO

1,024 square feet, this beautiful second floor office condo has new carpet & paint! It's unique two entrances allow for employees or clients to have a quiet retreat to the outside, if needed. There are 3 spacious private offices & a larger bull pin area that would be great for a conference table or additional work spaces. A private bathroom is located inside the unit, with a common area restroom located on the main floor. There are 4 deeded parking spaces but the complex is always under parked, leaving extra spots for your business' busy times. The common areas are attractive & well maintained.

PROPERTY SPECS

- 1,024 Square Feet
- \$14 psf NNN
- 2 Private Entrances
- 3 Large Offices
- 1 Private Bathroom
- 1 Main Floor Restroom
- 4 Deeded Parking Spaces
- Extra Parking Available
- New Carpet & Paint



CONTACT US:

ALICIA POLEVOI DAVIS

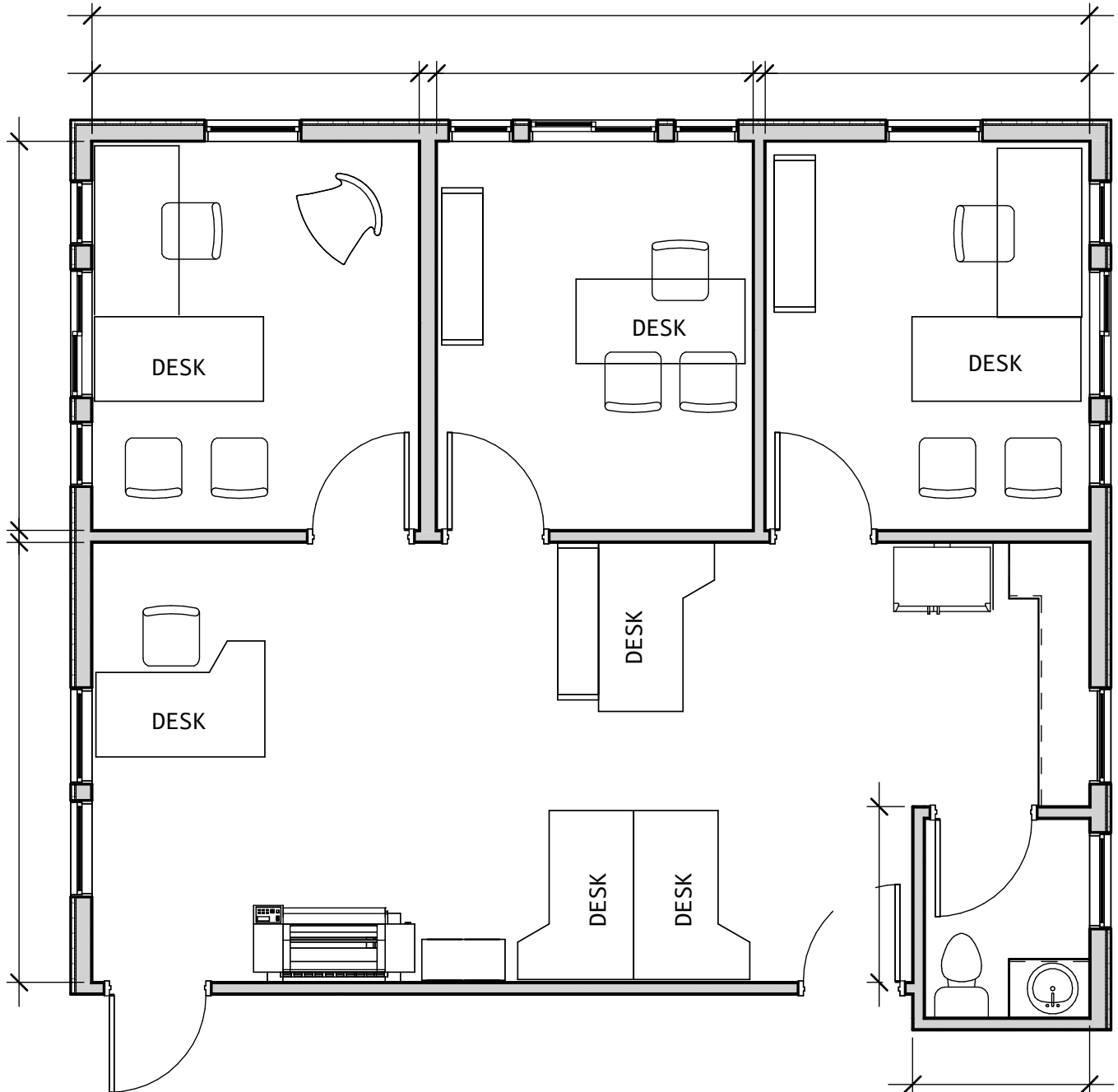
Alicia@TraverseAdvisors.com | 801-631-2306

HANNAH MCCRORY

Hannah@TraverseAdvisors.com |
801-600-6887

PROPERTY LAYOUT

9672 S 700 E #203, Sandy, UT 84070



SUITE 203



CONTACT US:

ALICIA POLEVOI DAVIS

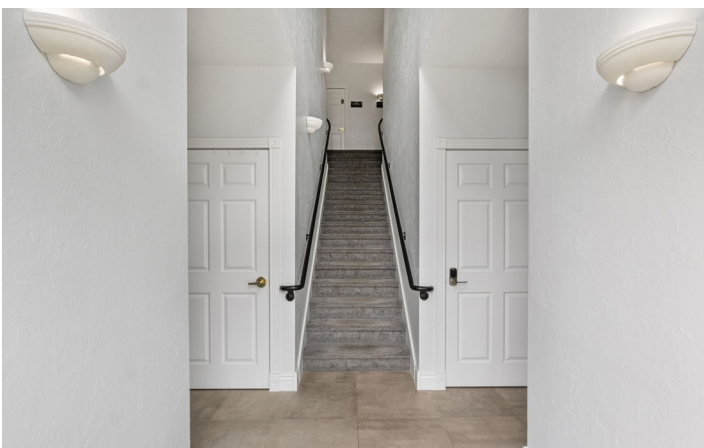
Alicia@TraverseAdvisors.com | 801-631-2306

HANNAH MCCRORY

Hannah@TraverseAdvisors.com |
801-600-6887

PROPERTY IMAGES

9672 S 700 E #203, Sandy, UT 84070



CONTACT US:

ALICIA POLEVOI DAVIS

Alicia@TraverseAdvisors.com | 801-631-2306

HANNAH MCCRORY

Hannah@TraverseAdvisors.com |
801-600-6887

DEMOGRAPHICS

9672 S 700 E #203, Sandy, UT 84070



ATTRIBUTES (3.0 MI)

123,440

POPULATION

43,455

HOUSEHOLDS

36.9

MEDIAN AGE

INCOME (3.0 MI)

\$89,951

MEDIAN HOUSEHOLD INCOME

61,985

DAYTIME EMPLOYEES



CONTACT US:

ALICIA POLEVOI DAVIS

Alicia@TraverseAdvisors.com | 801-631-2306

HANNAH MCCRORY

Hannah@TraverseAdvisors.com |
801-600-6887