



# LONDONTOWN BUSINESS CENTER

1332 LONDONTOWN BLVD | ELDERSBURG, MARYLAND 21784

FOR  
LEASE



**MACKENZIE**

COMMERCIAL REAL ESTATE SERVICES, LLC



# PROPERTY OVERVIEW

## HIGHLIGHTS:

- Newly renovated lobby, bathrooms, and common areas; extensive glass line
- Close to major routes with great visibility; near various amenities and restaurants
- Plenty of parking
- Attractive rental rates
- Executive Office Space - Suite 115:
  - Starting at \$400/Mo
  - Executive-style office offering short-term options
  - Rental includes private office and access to shared conference room, break room, and reception/waiting area
  - All utilities and internet included

AVAILABLE:

SUITE 108 E & F: 1,000 SF ±  
SUITE 114: 850 SF ±  
SUITE 200: 1,500-8,341 SF ±  
SUITE 115: 100-400 SF ±

ZONING:

I-1 (LIGHT INDUSTRIAL DISTRICT)

RENTAL RATE:

\$24.50/SF, FS



GOOGLE STREET VIEW



# SITE PLAN

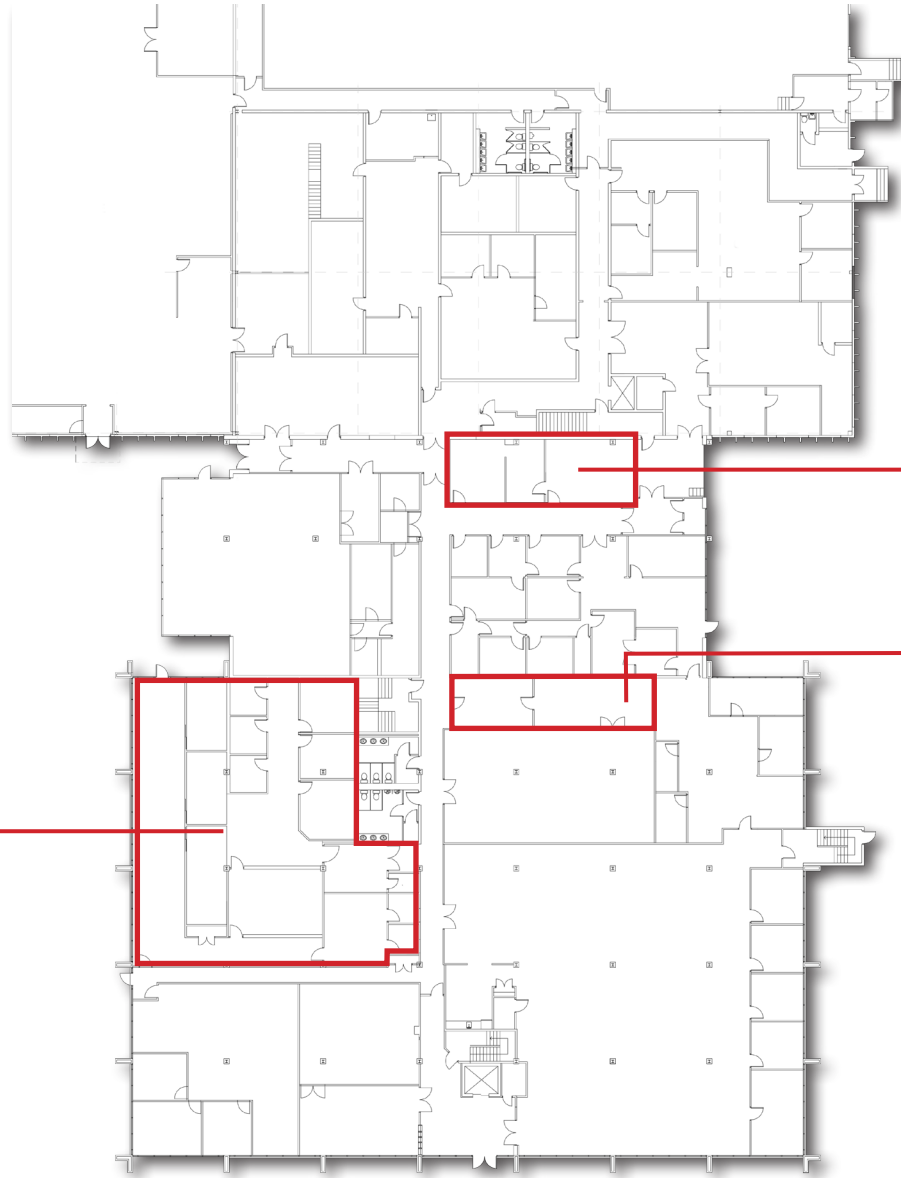




# FLOOR PLAN - 1ST FLOOR

 - AVAILABLE

Suite 115: 100 - 400 sf  
Executive Offices

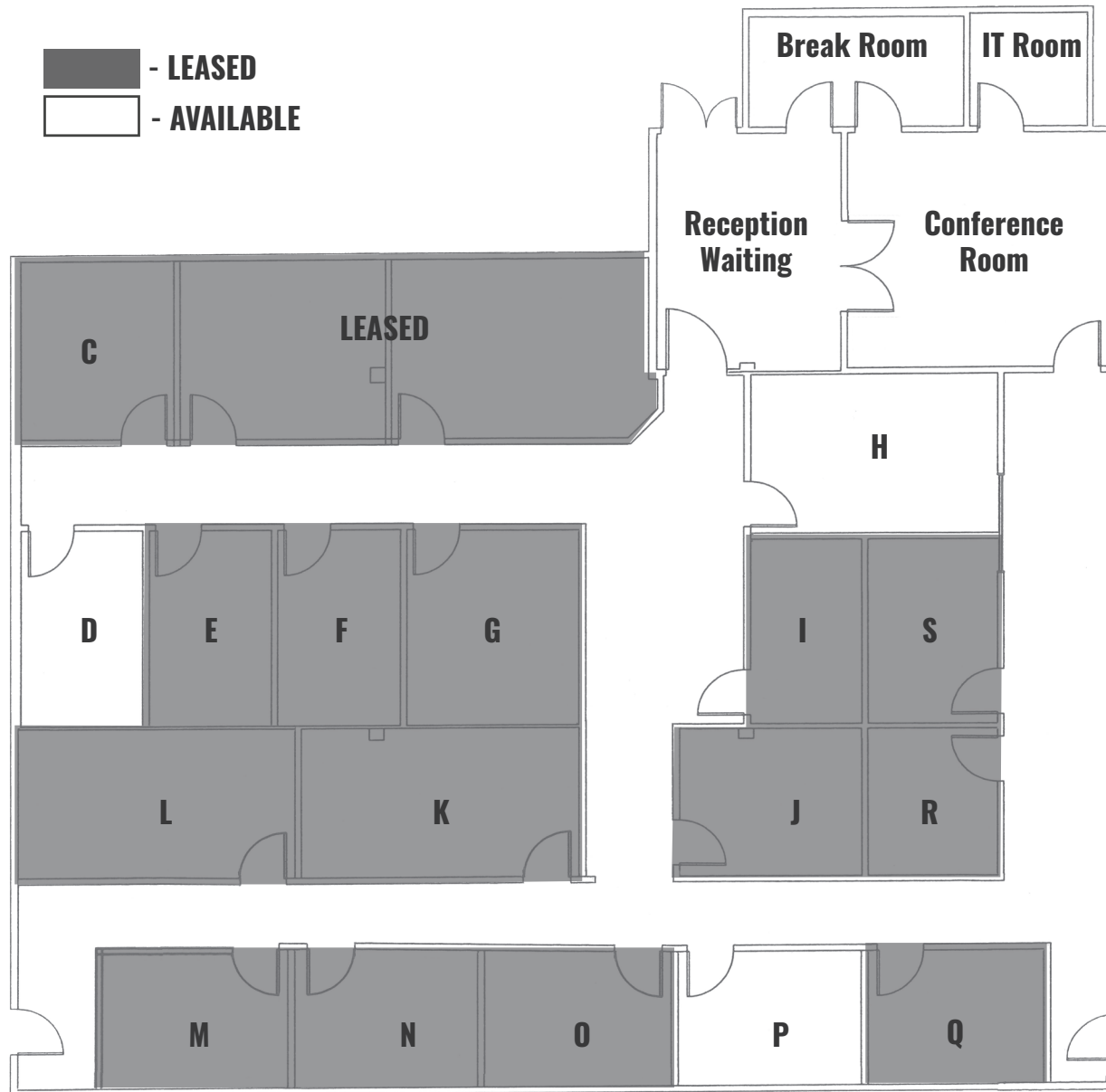


○ Suite 108 E&F: 1,000 sf

○ Suite 114: 850 sf



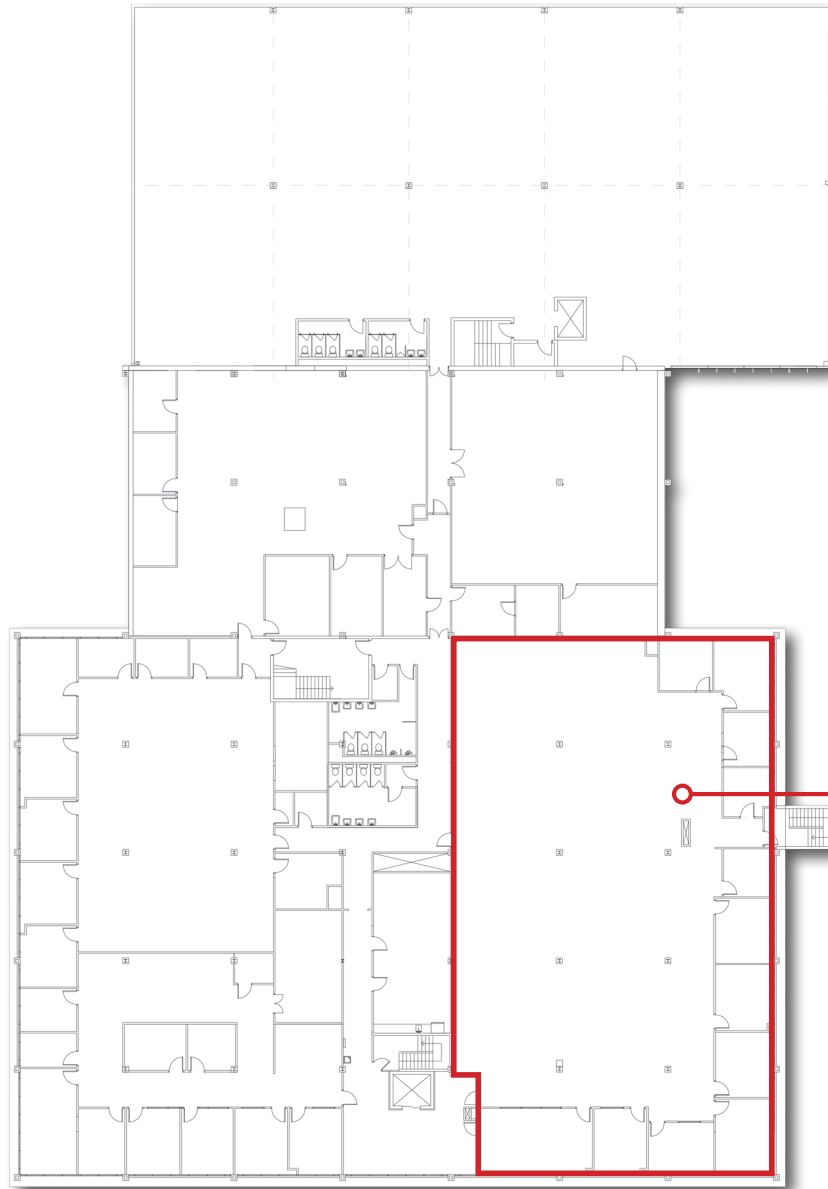
# FLOOR PLAN - EXECUTIVE OFFICE SPACES





# FLOOR PLAN - 2ND FLOOR

 - AVAILABLE



Suite 200: 1,500 sf - 8,341 sf

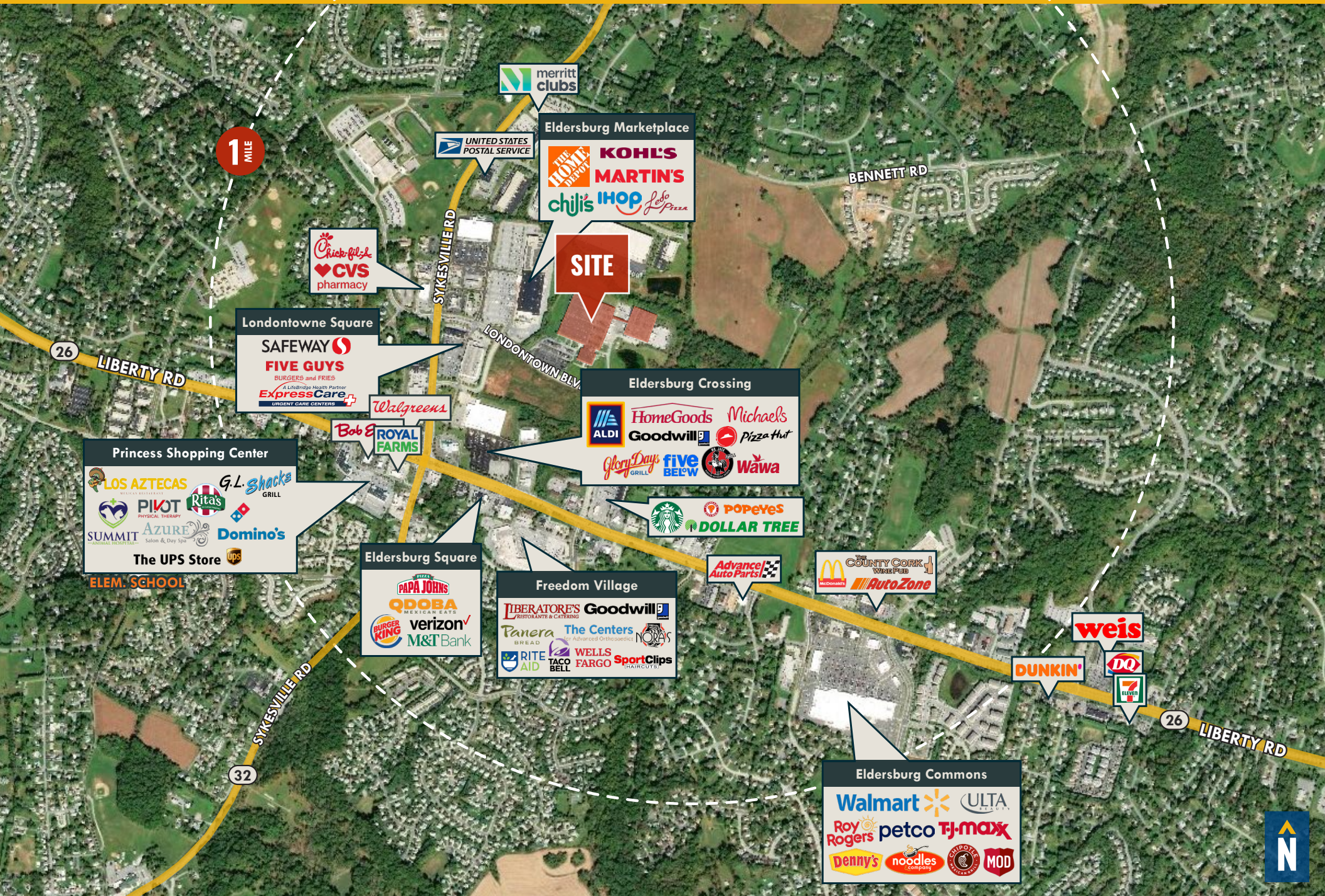


# 2ND FLOOR



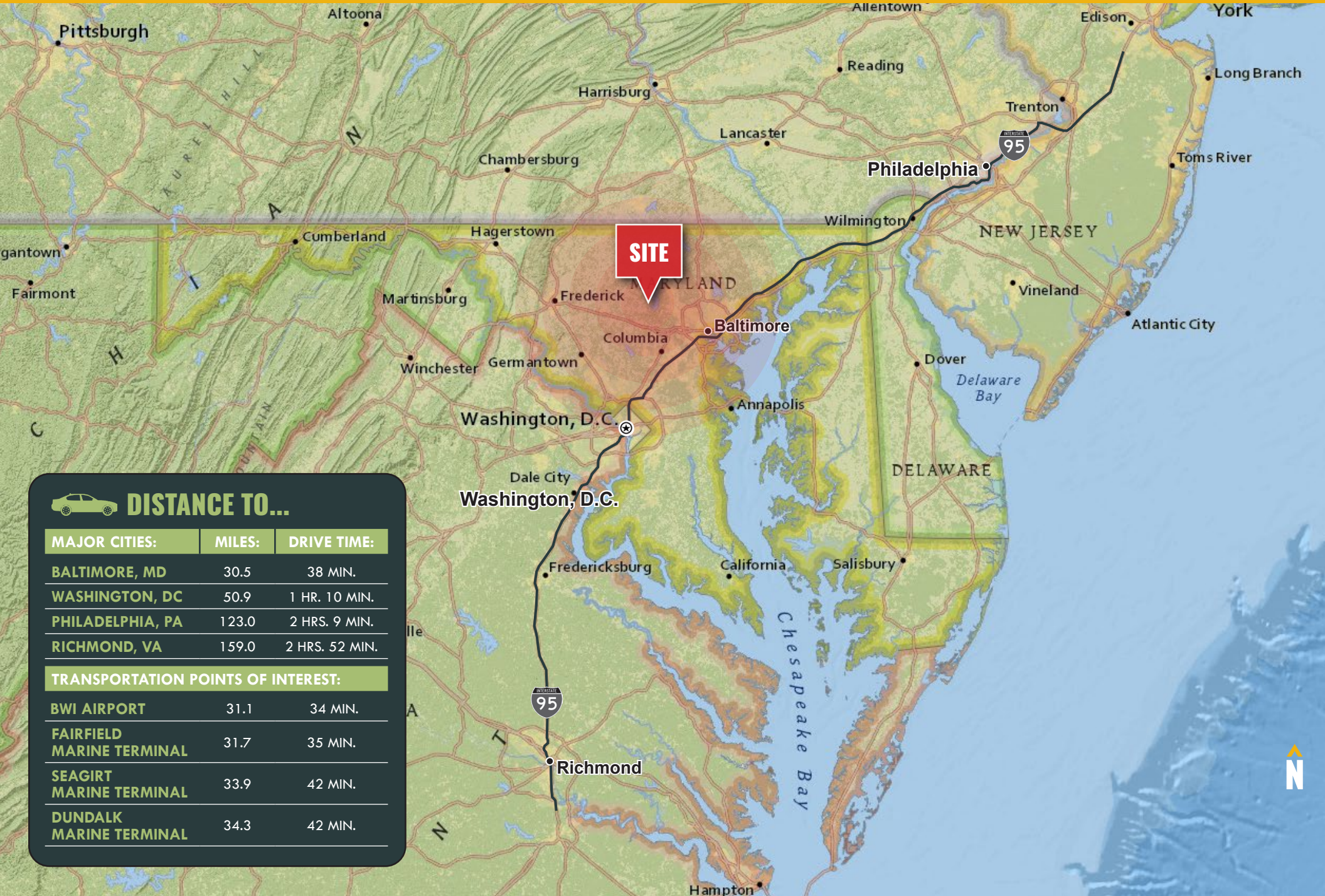


# ELDERSBURG TRADE AREA





# LOCATION





# FOR MORE INFO **CONTACT:**



**DENNIS BOYLE, SIOR**

*SENIOR VICE PRESIDENT*

**443.798.9339**

**DBOYLE@mackenziecommercial.com**



VISIT **PROPERTY PAGE** FOR MORE INFORMATION.



**MACKENZIE**

COMMERCIAL REAL ESTATE SERVICES, LLC

**410-872-0400**

**10175 Little Patuxent Parkway, Suite 902  
Columbia, MD 21044**

OFFICES IN: ANNAPOLIS, MD BALTIMORE, MD BEL AIR, MD **COLUMBIA, MD** LUTHERVILLE, MD CHARLOTTESVILLE, VA

**[www.MACKENZIECOMMERCIAL.com](http://www.MACKENZIECOMMERCIAL.com)**

No warranty or representation, expressed or implied, is made as to the accuracy of the information contained herein, and same is submitted subject to errors, omissions, change of price, rental or other conditions, withdrawal without notice, and to any specific listing conditions imposed by our principals.