



# FOR SUBLEASE – 10,558 SF

**1311 Walnut Street  
Stoneboro, PA 16153**

## Property Highlights

- 10,558 SF Available Immediately
- Constructed in 2022: all new HVAC, plumbing, lighting installed.
- Corner of State Route 845 & Mercer Street, with ingress/egress from either street, pylon sign located at corner
- Shared lot adjacent to small center with Keystone Rehab, EJ's Pizza, and Clapper Insurance
- Across from Lakeview Middle and High School Complex with adjacent Baseball and Football Fields



*For information, please contact:*

**Martin Perry, CCIM**  
Senior Managing Director  
t 412-310-2315  
Martin.perry@nmrk.com

**Jessica Spazok**  
Managing Director  
t 412-498-0398  
Jessica.spazok@nmrk.com

210 Sixth Avenue, Suite 600  
Pittsburgh, PA 15222  
412-281-0100

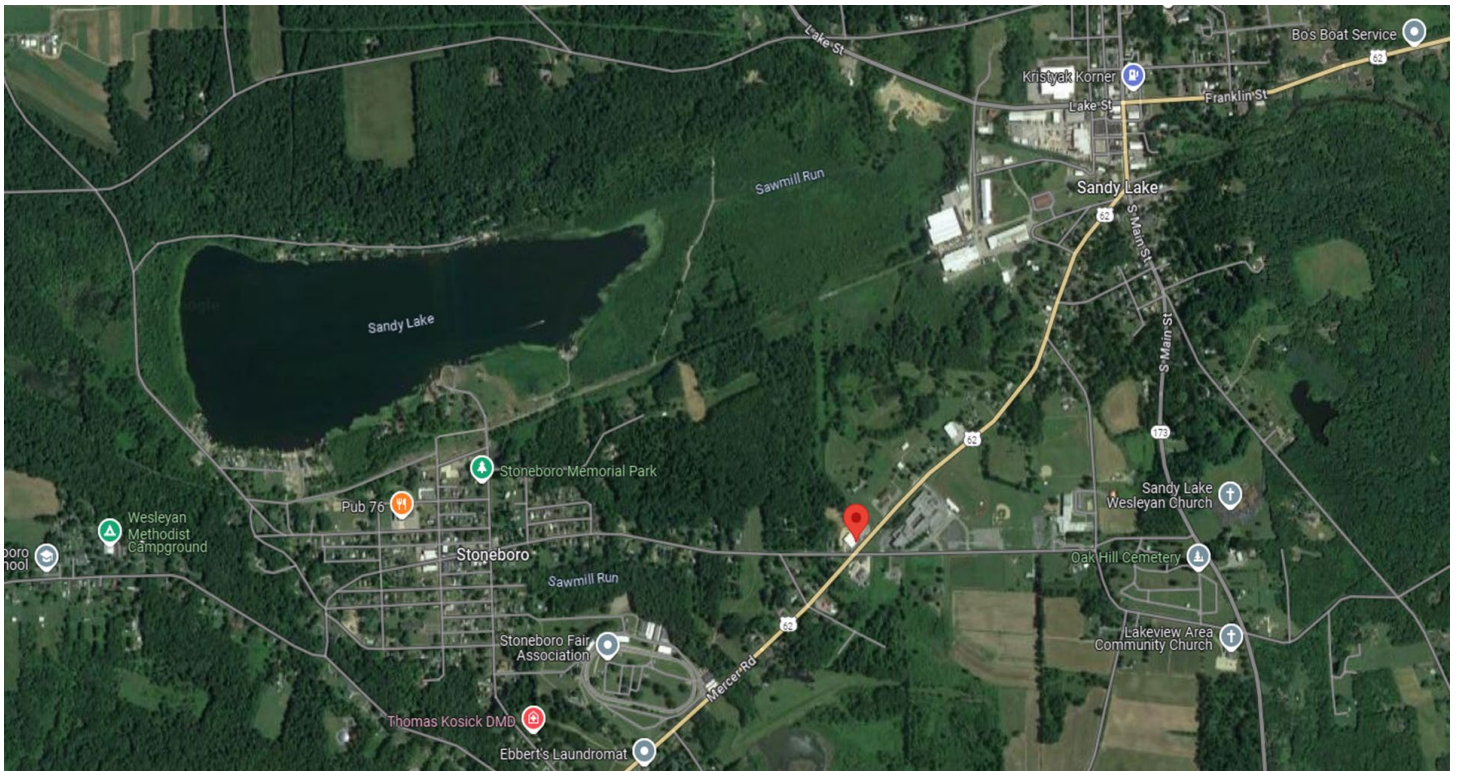
[nmrk.com](http://nmrk.com)

**NEWMARK**

Licensed in Pennsylvania as Newmark Real Estate

The information contained herein has been obtained from sources deemed reliable but has not been verified and no guarantee, warranty or representation, either express or implied, is made with respect to such information. Terms of sale or lease and availability are subject to change or withdrawal without notice.

1311 Walnut Street Stoneboro, PA 16153



Demographics	3 Mile	5 Miles	10 Miles
Population	2,561	4,226	15,510
Households	1,095	1,775	6,437
Average HH Income	\$56,399	\$59,166	\$64,242

CONTACT

**Martin Perry, CCIM**  
Senior Managing Director  
t 412-310-2315  
Martin.perry@nmrk.com

**Jessica Spazok**  
Managing Director  
t 412-498-0398  
Jessica.spazok@nmrk.com

