

Class A office in Westchase Houston



1500
CITY WEST



 TRANSWESTERN®

 BioUrja

AT A GLANCE


1500
CITY WEST

191,281 RSF Class A Office

10 Stories

4/1,000 Garage Parking



building highlights

- | **New Modern Tenant Lounge** with grab & go market, coffee bar and focus room
- | Renovated Lobby
- | On-site Management & Security
- | Convenient On-Site Cafe
- | Local Ownership
- | Prominent Westchase Location
- | Competitive Rental Rates



NEW TENANT LOUNGE

completed in 2025



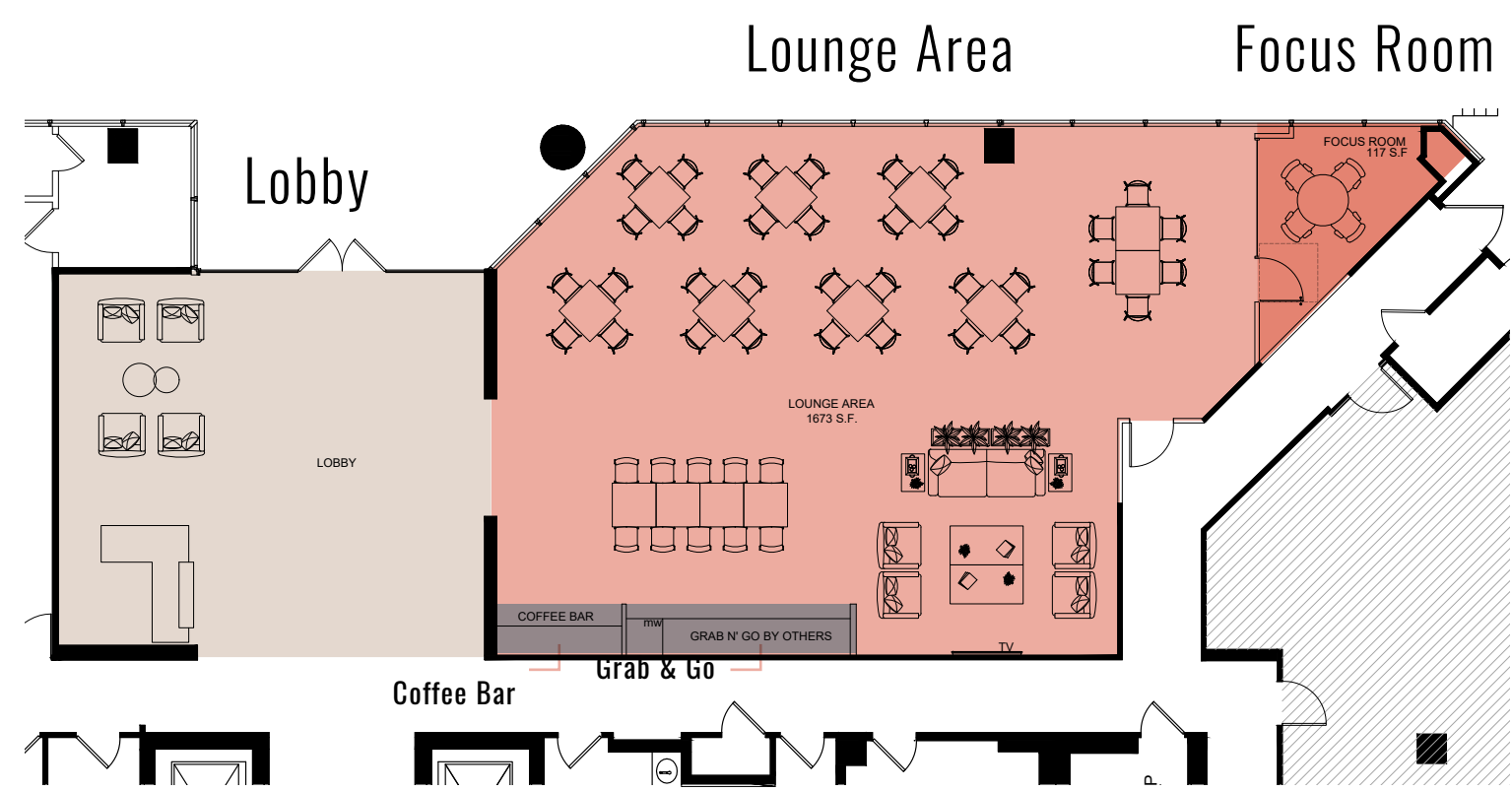
coffee bar



grab & go



focus area



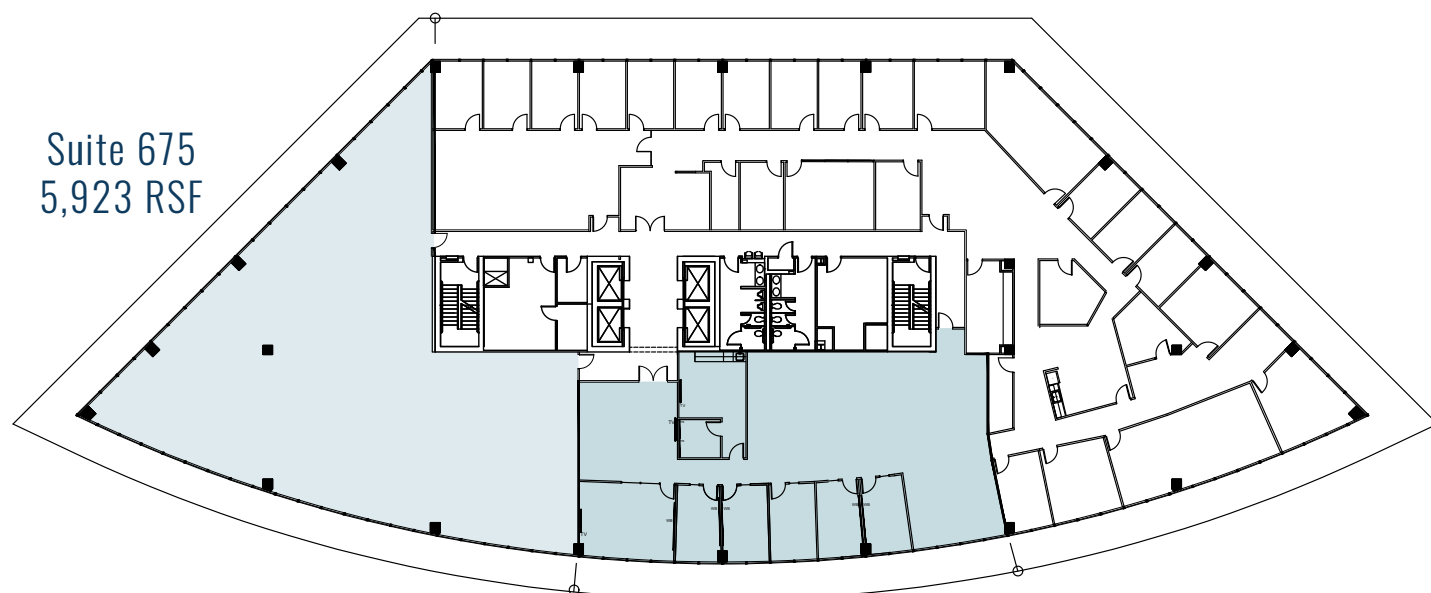
AVAILABILITIES

customizable floor plans

VIEW ONLINE LISTING

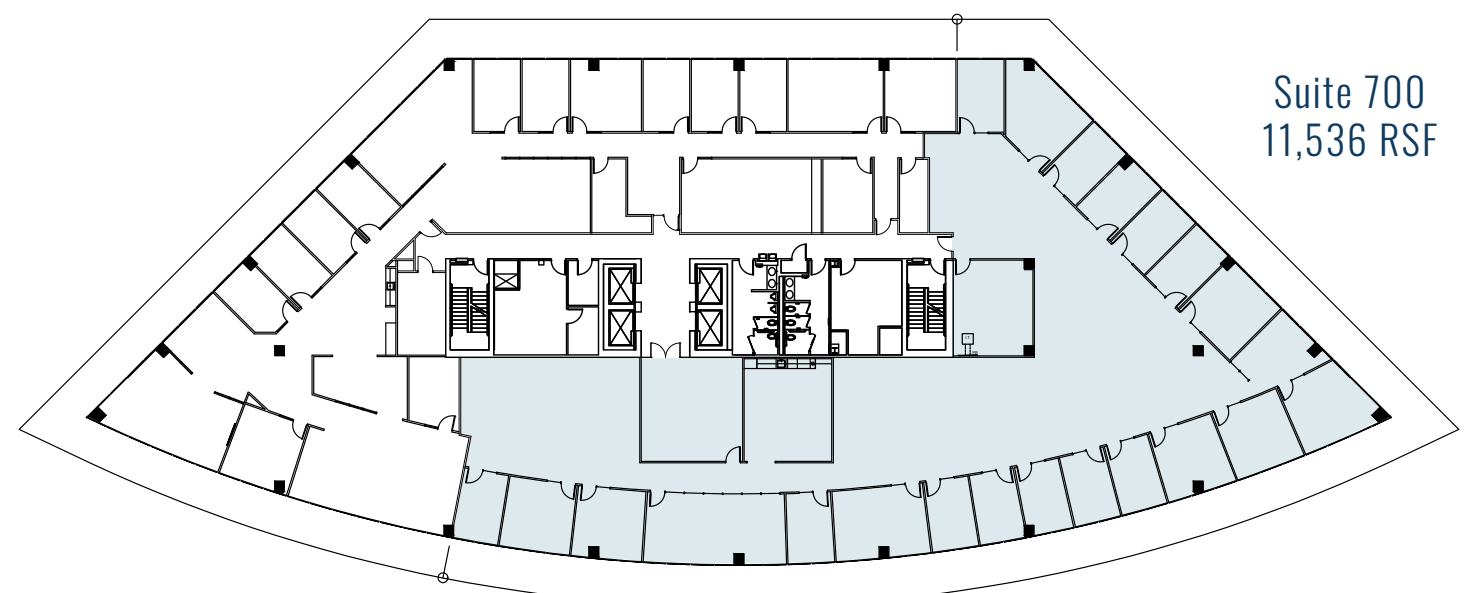


Suite 675
5,923 RSF



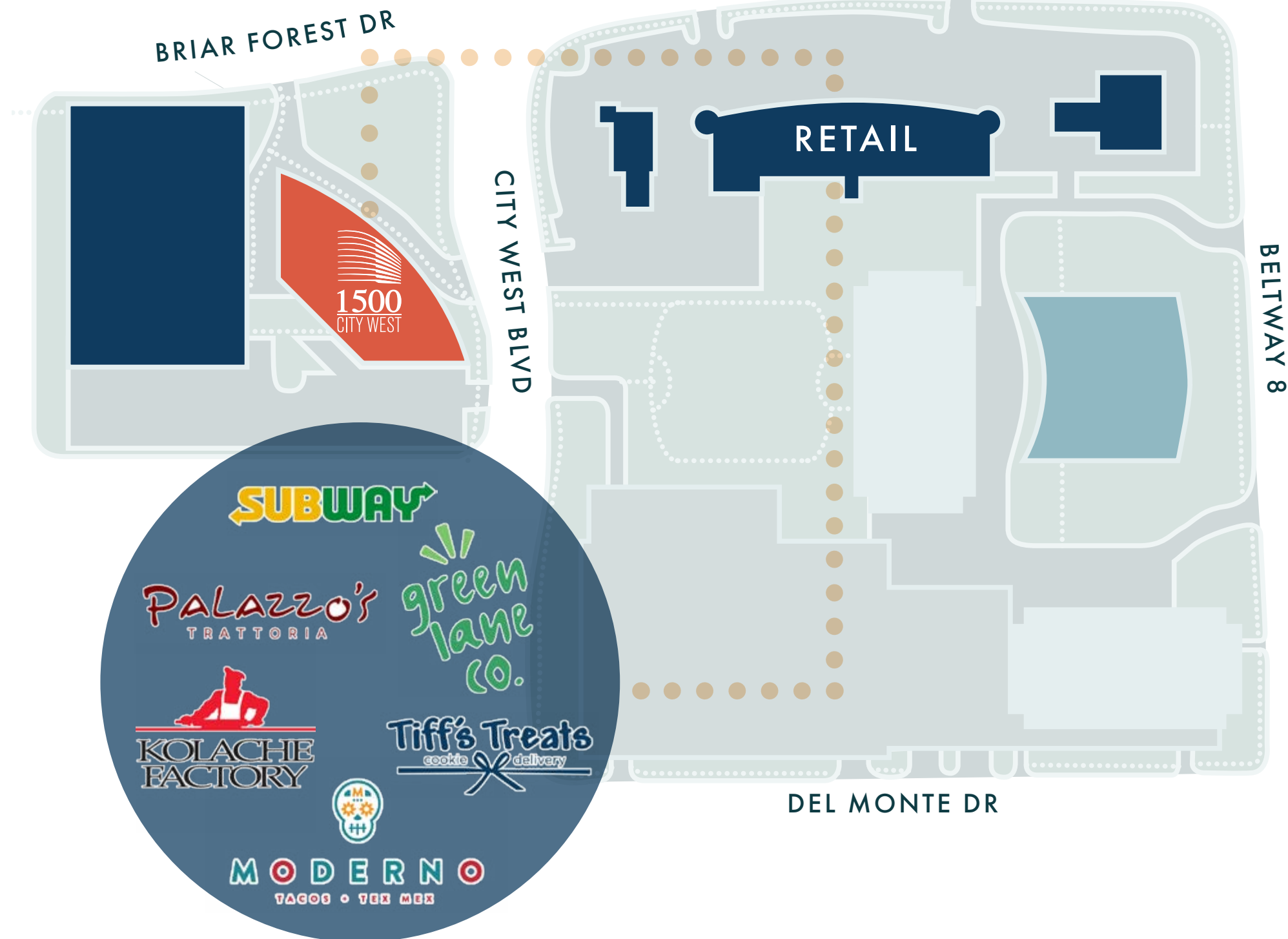
Suite 600
4,303 RSF

Suite 700
11,536 RSF



WALKABLE EATERIES

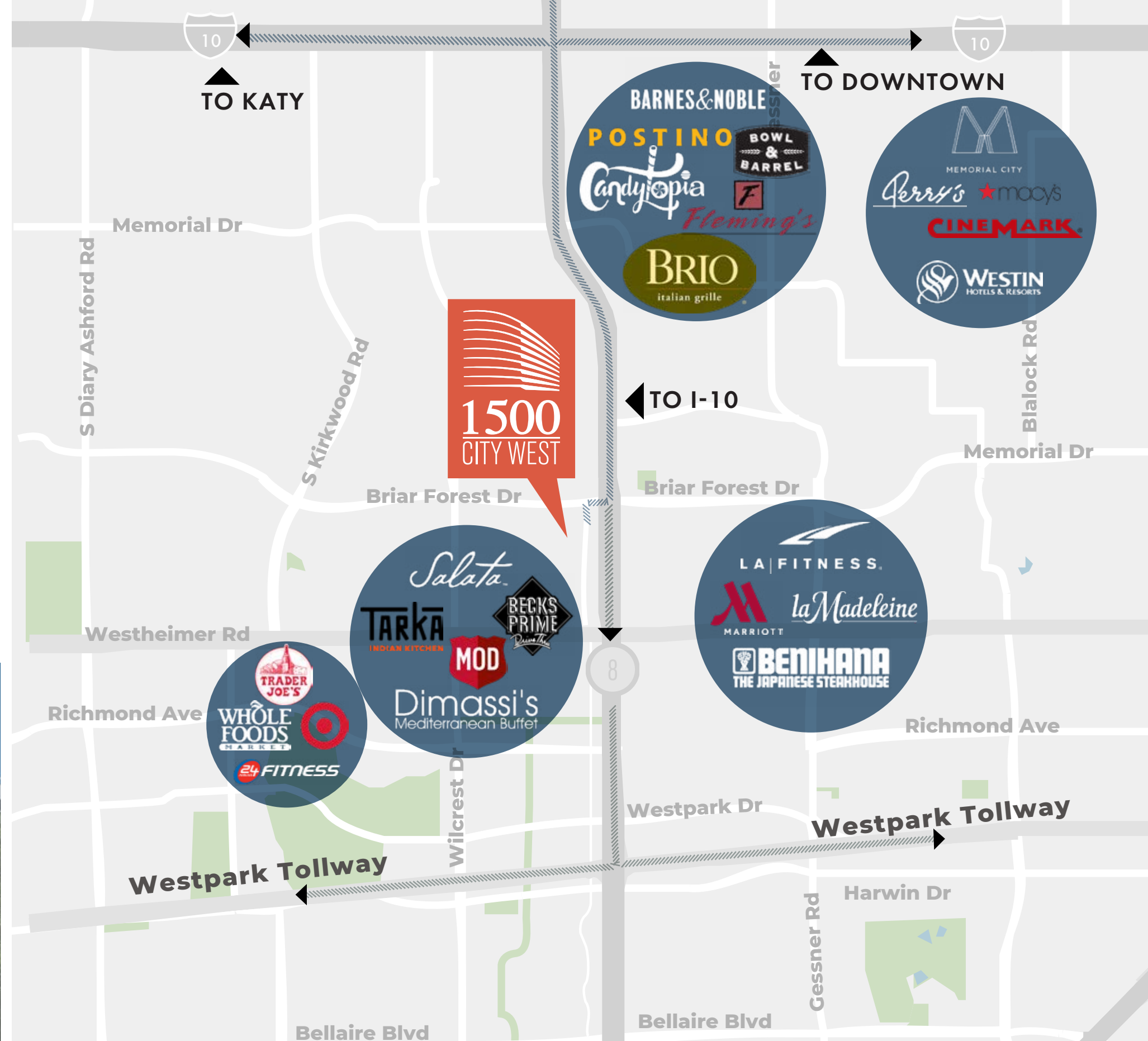
just steps away from your desk



PRIME LOCATION

mere minutes away

Discover Westchase — from A+ dining and retail to fitness clubs and spas, everything you need is only minutes away.



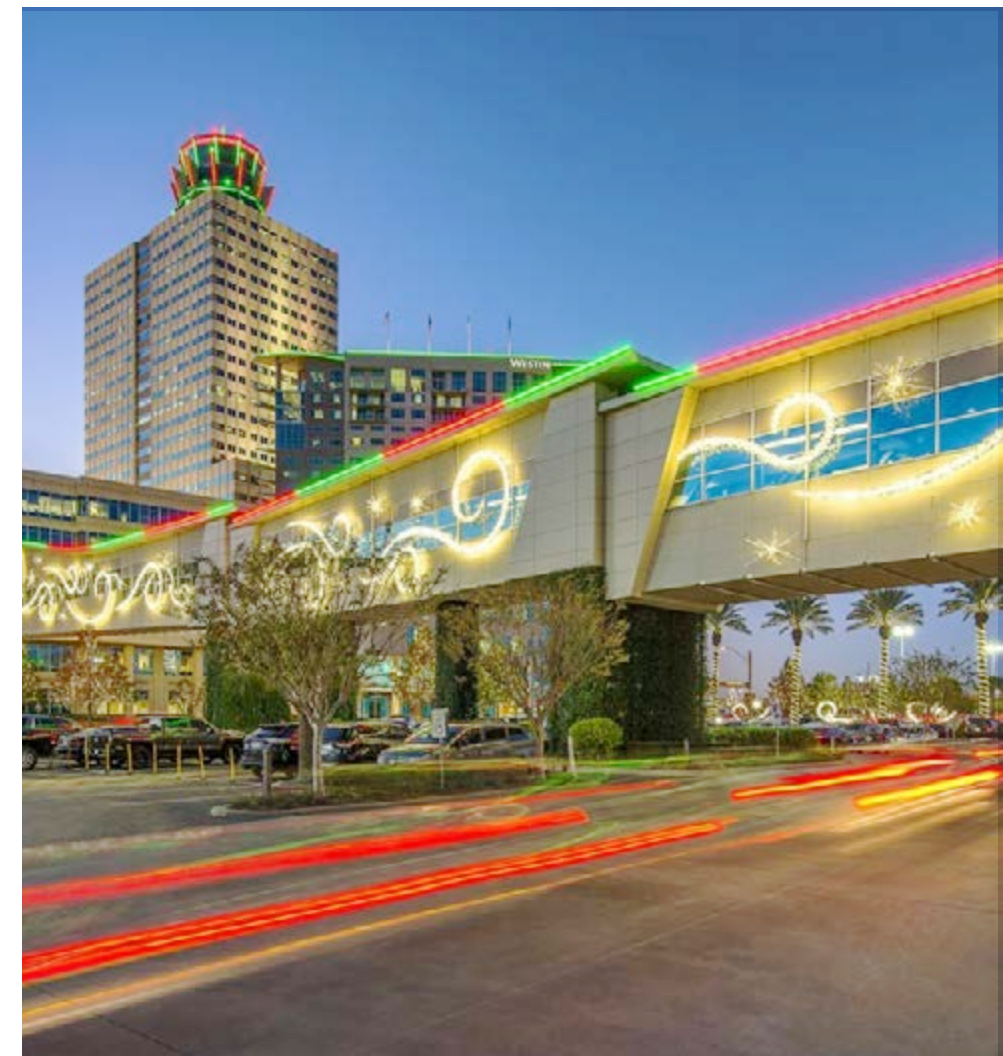
BUILDING SIGNAGE OPPORTUNITIES AVAILABLE
VISIBLE FROM BELTWAY 8

MEMORIAL CITY <12 MINS CITYCENTRE <10 MINS

life in the city



MEMORIAL CITY MALL
DINING
SHOPPING
HOTELS
EVENTS
LIVE MUSIC
ART
WELLNESS
BEAUTY
BOWLING
INDOOR SKYDIVING
CANDYTOPIA



FOR LEASING INQUIRIES

LOUANN PEREIRA

713.272.1267

louann.pereira@transwestern.com

KELLI GAULT

713.270.3349

kelli.gault@transwestern.com

DOUG LITTLE

713.272.1284

doug.little@transwestern.com

