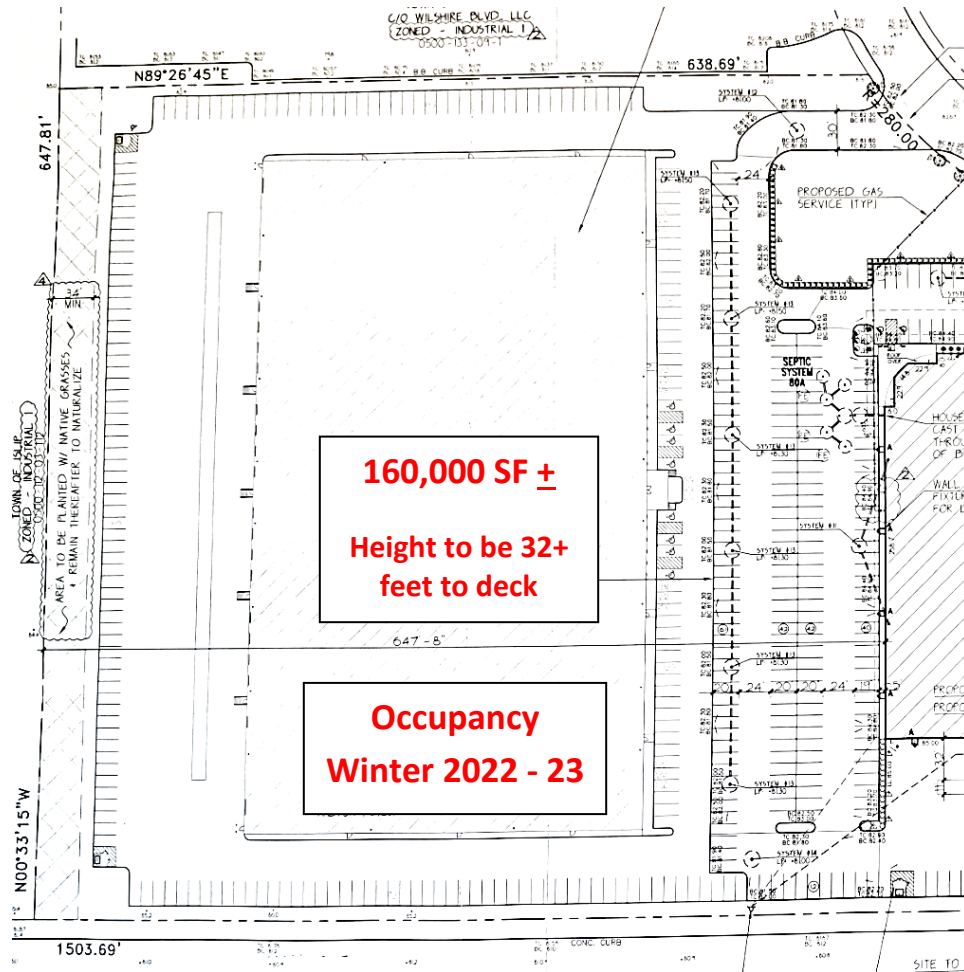


# 90 Wilshire Boulevard Edgewood NY



## Construction To Begin Soon!

Located in the 400 Acre Heartland Business Center  
on Wilshire Boulevard off Rodeo Drive

Near all major roads - Long Island Expressway,  
Southern & Northern State Parkway, Sagtikos Parkway & Sunrise Highway

Near the Deer Park LIRR Station for an  
easy 60 min. ride into NYC

Heartland Golf Park – Driving Range, Mini Golf & 3 Par Course

**HEARTLAND  
BUSINESS CENTER**  
"BUILDING FOR INDUSTRY THE BETTER WAY"

**Nick Pizzardi**

Director of Leasing

631 242-6300 office

516 480-4701 cell

631 242-2820 fax

[NPizzardi@hrtld.com](mailto:NPizzardi@hrtld.com)