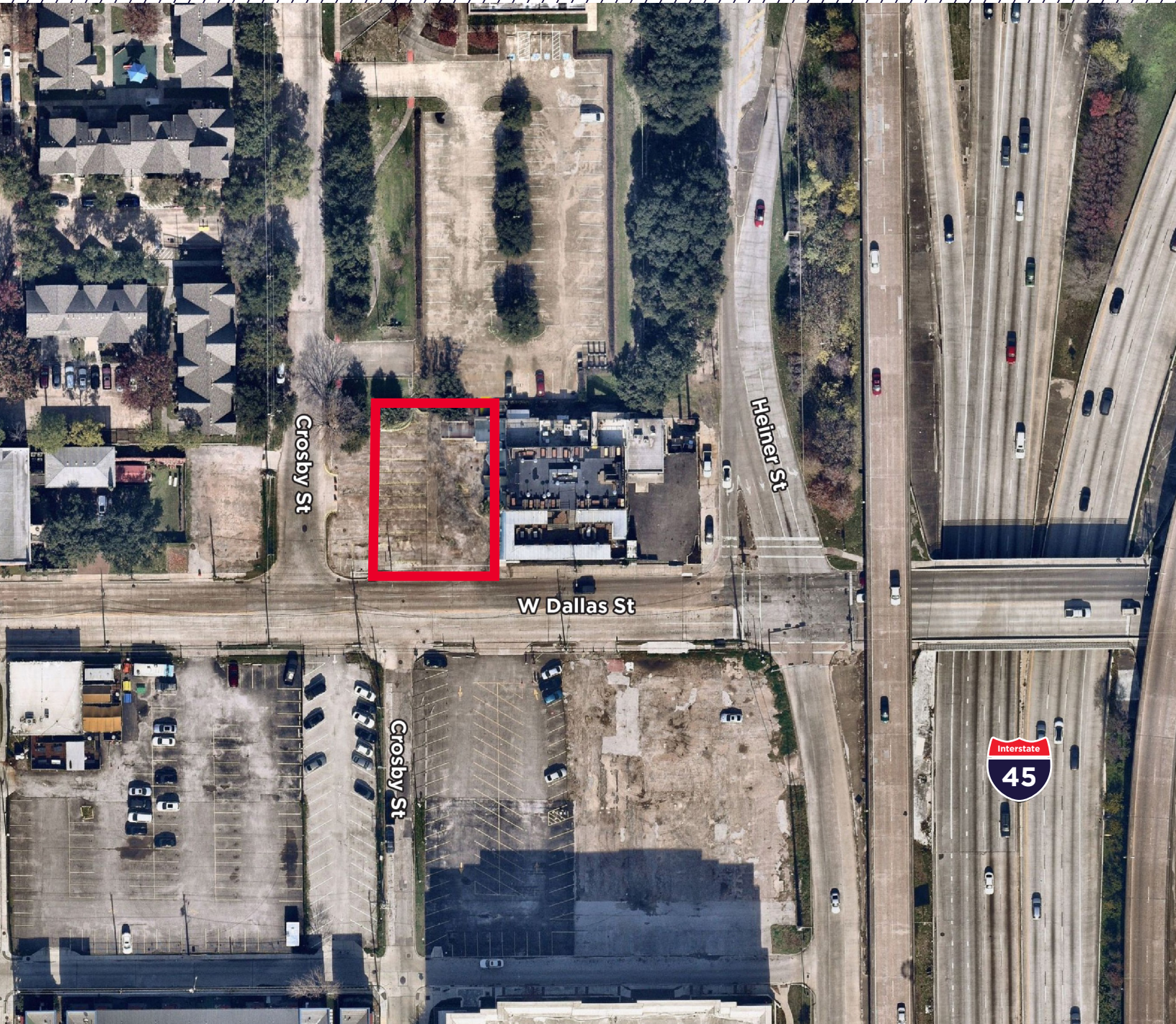


±8,000 SF AVAILABLE

700 W. DALLAS STREET HOUSTON, TX 77019



KRISTEN MCDADE
Managing Director
+1 713 331 1796
kristen.mcdade@cushwake.com

MATTHEW DAVIS
Senior Director
+1 713 331 1798
matthew.davis@cushwake.com

MELISSA ELIZONDO
Brokerage Specialist
+1 346 396 4008
melissa.elizondo@cushwake.com

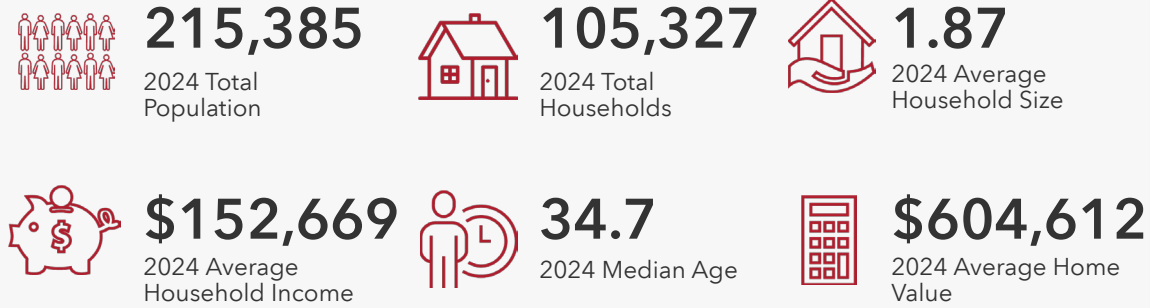


1330 Post Oak Boulevard, Suite 2700 Houston, TX
www.cushmanwakefield.com

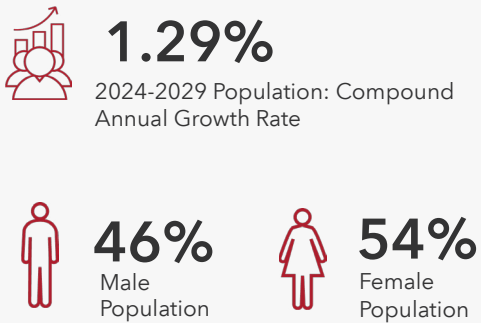
DEMOGRAPHICS

700 W. Dallas Street, Houston, TX 77019
3 miles

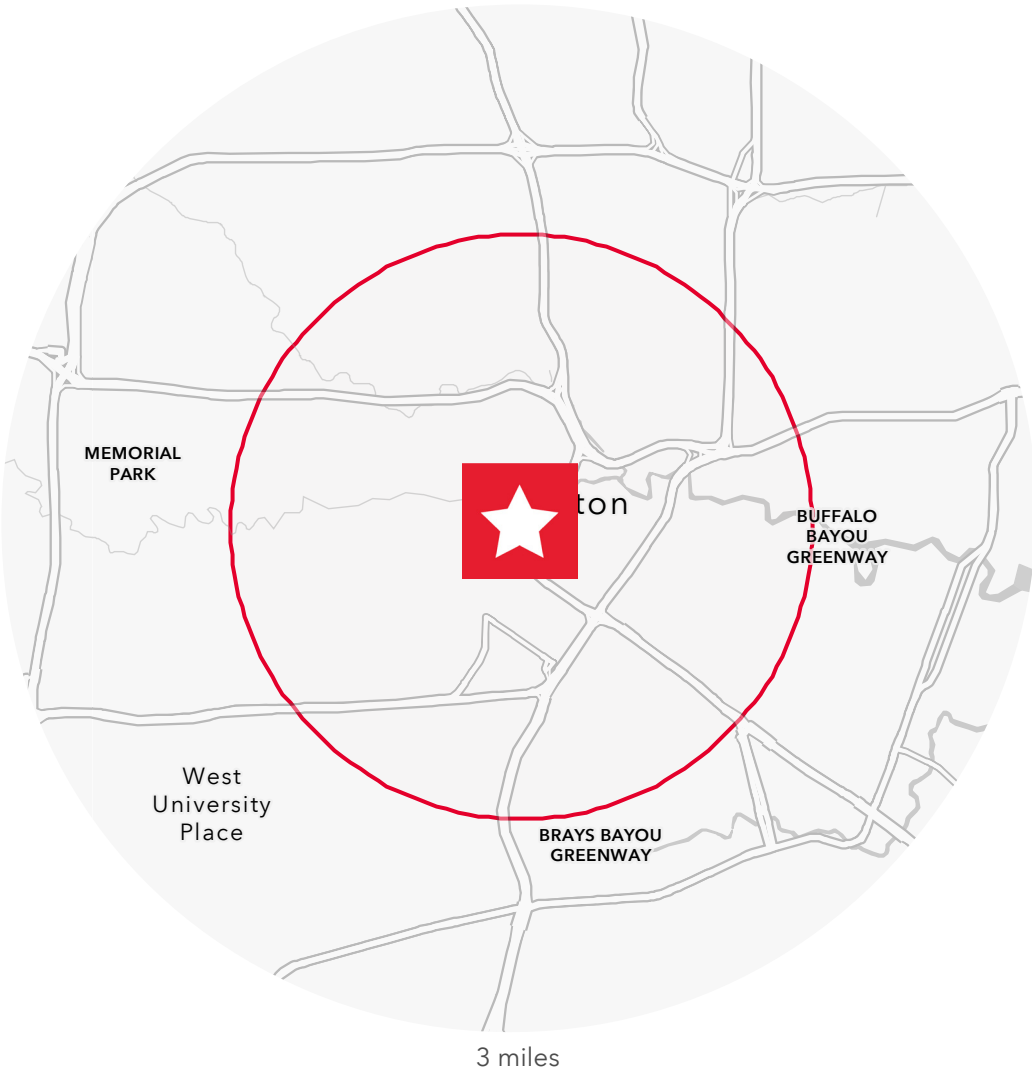
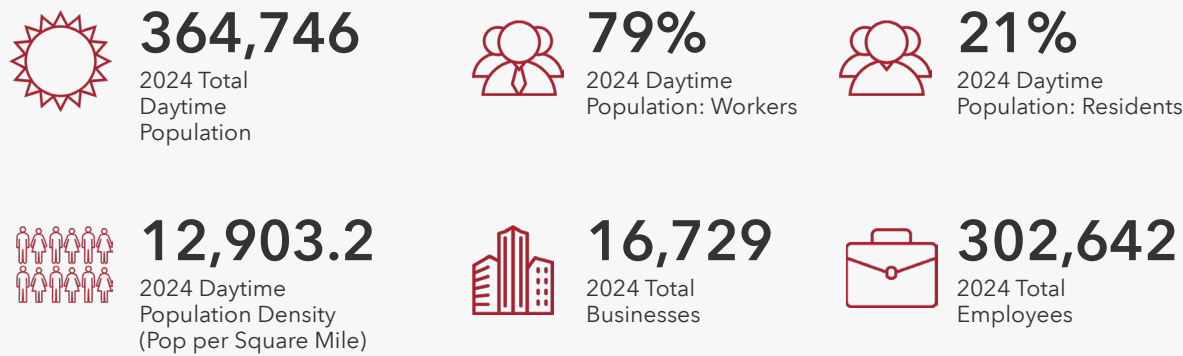
HOUSEHOLDS



POPULATION



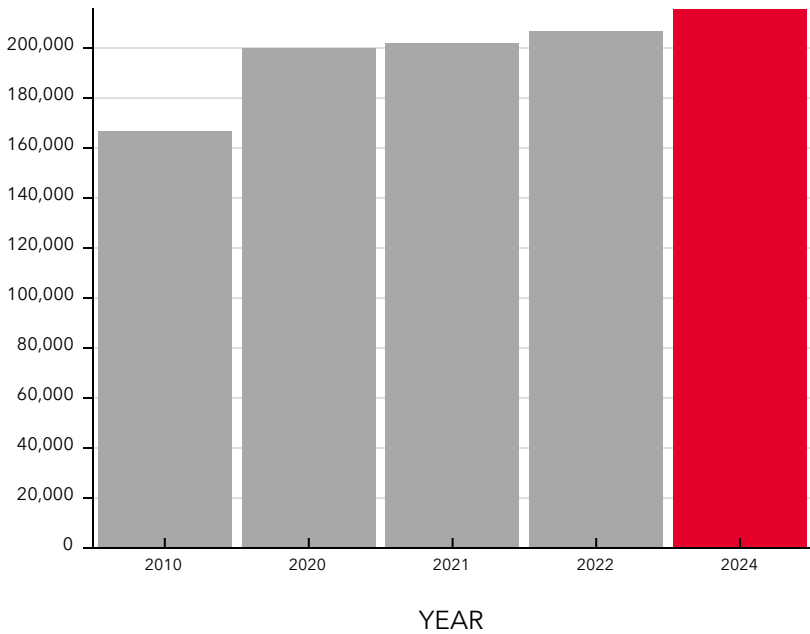
EMPLOYMENT



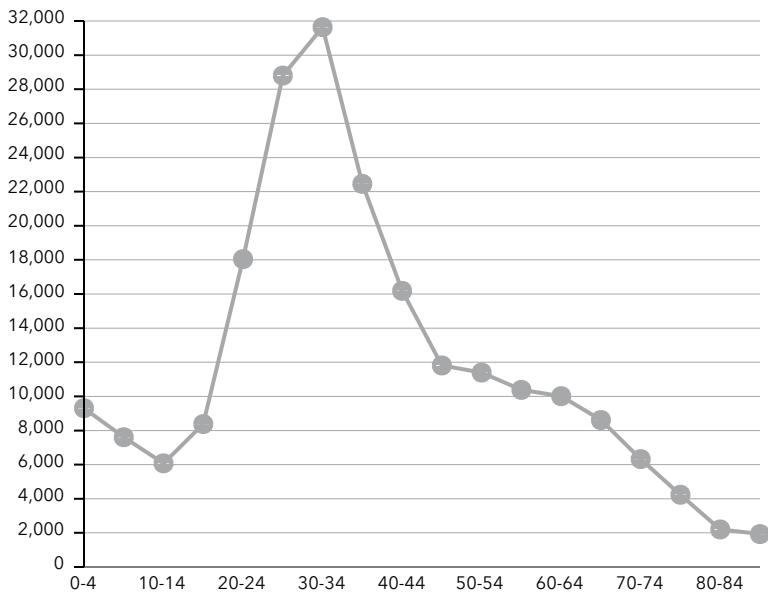
EDUCATIONAL ATTAINMENT



POPULATION TIME SERIES 2010-2024

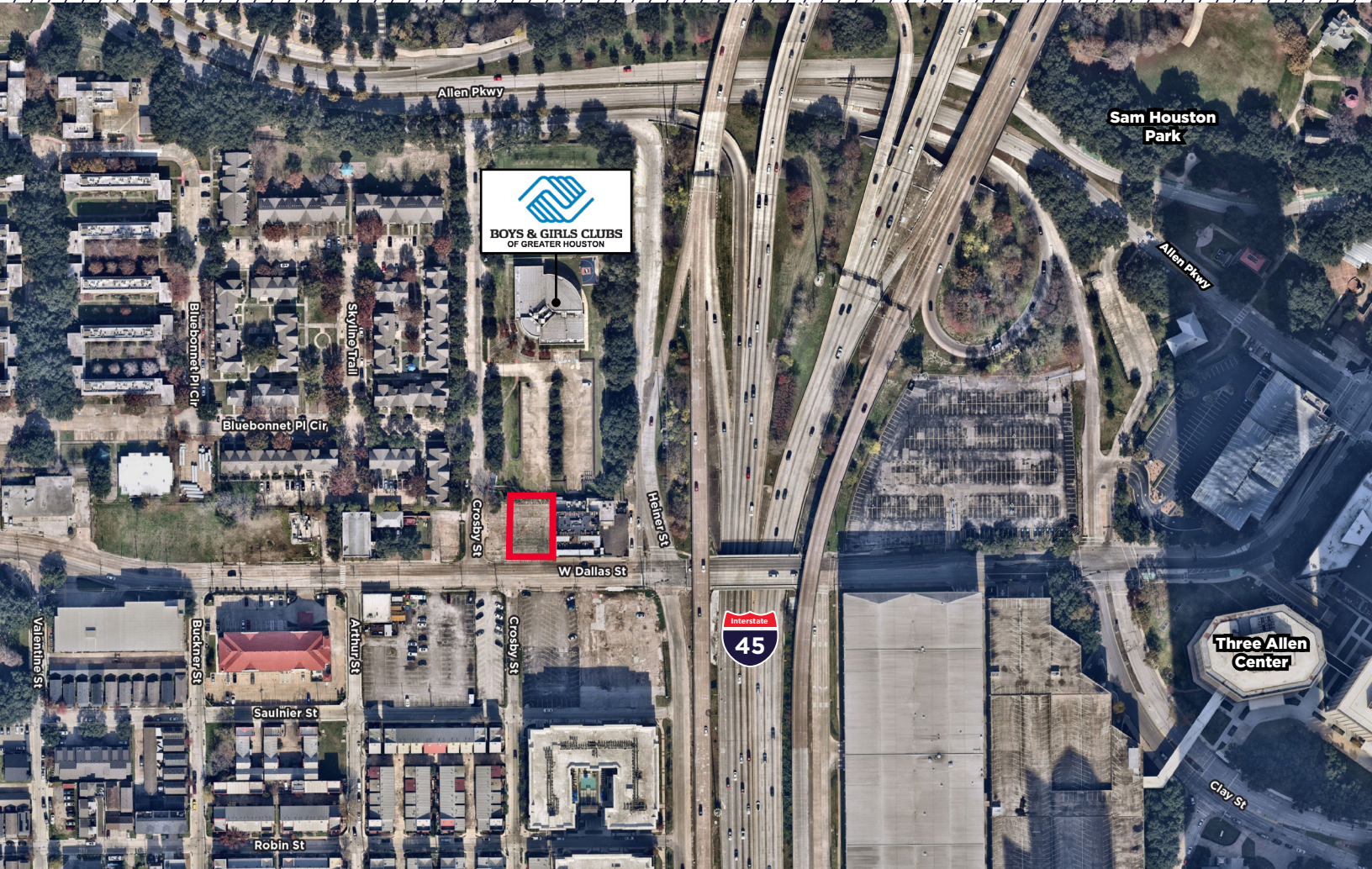


POPULATION BY AGE GROUP



±8,000 SF AVAILABLE

700 W. DALLAS STREET HOUSTON, TX 77019



PROPERTY HIGHLIGHTS

- ±70' of frontage along W. Dallas
- Currently used as a parking lot
- Excellent visibility and access to I-45 and Allen Parkway
- Close proximity to Houston's central business district

KRISTEN MCDADE

Managing Director
+1 713 331 1798
kristen.mcdade@cushwake.com

MATTHEW DAVIS

Senior Director
+1 713 331 1798
matthew.davis@cushwake.com

MELISSA ELIZONDO

Brokerage Specialist
+1 346 396 4008
melissa.elizondo@cushwake.com



1330 Post Oak Boulevard, Suite 2700 Houston, TX
www.cushmanwakefield.com

©2024 Cushman & Wakefield. All rights reserved. The information contained in this communication is strictly confidential. This information has been obtained from sources believed to be reliable but has not been verified. NO WARRANTY OR REPRESENTATION, EXPRESS OR IMPLIED, IS MADE AS TO THE CONDITION OF THE PROPERTY (OR PROPERTIES) REFERENCED HEREIN OR AS TO THE ACCURACY OR COMPLETENESS OF THE INFORMATION CONTAINED HEREIN, AND SAME IS SUBMITTED SUBJECT TO ERRORS, OMISSIONS, CHANGE OF PRICE, RENTAL OR OTHER CONDITIONS, WITHDRAWAL WITHOUT NOTICE, AND TO ANY SPECIAL LISTING CONDITIONS IMPOSED BY THE PROPERTY OWNER(S). ANY PROJECTIONS, OPINIONS OR ESTIMATES ARE SUBJECT TO UNCERTAINTY AND DO NOT SIGNIFY CURRENT OR FUTURE PROPERTY PERFORMANCE.