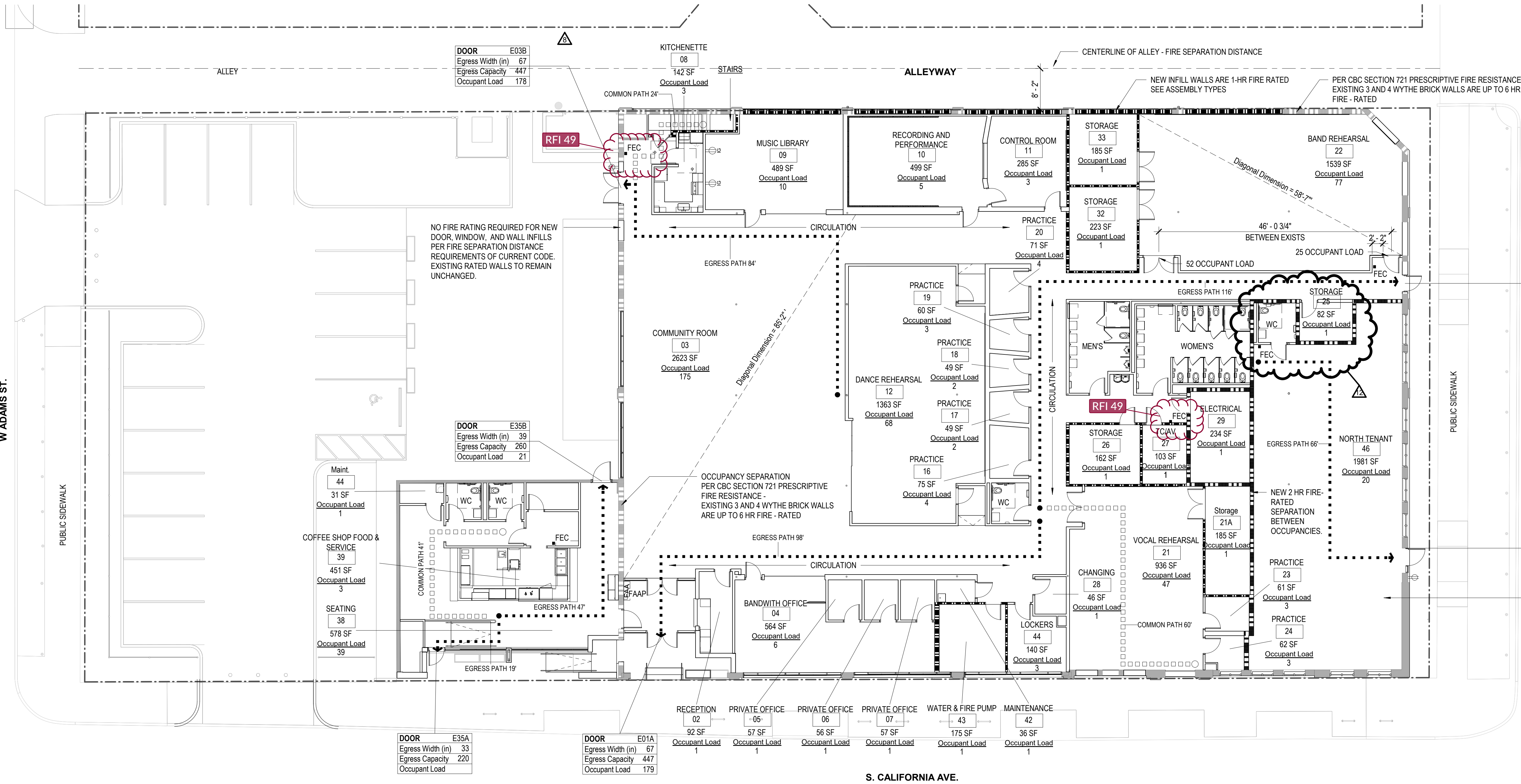


LIFE SAFETY PLAN
3/32" = 1'-0"



LIFE SAFETY PLAN BASEMENT
3/32" = 1'-0"

OCCUPANCY BY SPACE - BANDWITH						
Name	Number	Area	Use of Space (Chicago 2019)	OLF-CBC2019	OCCUPANT	Comments
KITCHENETTE	08	142 SF	Accessory storage areas, mechanical equipment rooms	300	1	BandWith
TC/AV	27	103 SF	Accessory storage areas, mechanical equipment rooms	300	1	BandWith
ELECTRICAL	29	234 SF	Accessory storage areas, mechanical equipment rooms	300	1	BandWith
STORAGE	26	162 SF	Accessory storage areas, mechanical equipment rooms	300	1	BandWith
PRACTICE	24	62 SF	Accessory storage areas, mechanical equipment rooms	300	1	BandWith
MAINTENANCE	42	36 SF	Accessory storage areas, mechanical equipment rooms	300	1	BandWith
STORAGE	32	223 SF	Accessory storage areas, mechanical equipment rooms	300	1	BandWith
STORAGE	33	185 SF	Accessory storage areas, mechanical equipment rooms	300	1	BandWith
EXISTING BASEMENT	55	474 SF	Accessory storage areas, mechanical equipment rooms	300	2	BandWith
STORAGE	25	82 SF	Accessory storage areas, mechanical equipment rooms	300	1	BandWith
COMMON ROOM	05	2623 SF	Assembly without fixed seats: Unconcentrated (tables and chairs)	15	175	BandWith
RECORDING AND PERFORMANCE	10	499 SF	Business areas	100	5	BandWith
PRIVATE OFFICE	07	57 SF	Business areas	100	1	BandWith
BANDWITH OFFICE	04	564 SF	Business areas	100	6	BandWith
PRIVATE OFFICE	06	56 SF	Business areas	100	1	BandWith
PRIVATE OFFICE	05	57 SF	Business areas	100	1	BandWith
RECEPTION	02	92 SF	Business areas	100	1	BandWith
CONTROL ROOM	11	285 SF	Business areas	100	3	BandWith
PRACTICE	20	71 SF	Educational: Classroom	20	4	BandWith
PRACTICE	19	60 SF	Educational: Classroom	20	3	BandWith
PRACTICE	18	49 SF	Educational: Classroom	20	3	BandWith
PRACTICE	17	49 SF	Educational: Classroom	20	3	BandWith
PRACTICE	16	75 SF	Educational: Classroom	20	4	BandWith
VOCAL REHEARSAL	21	936 SF	Educational: Classroom	20	47	BandWith
Storage	21A	185 SF	Educational: Classroom	20	10	BandWith
PRACTICE	23	61 SF	Educational: Classroom	20	4	BandWith
BAND REHEARSAL	22	1539 SF	Educational: Classroom	20	77	BandWith
DANCE REHEARSAL	12	1363 SF	Exercise Rooms: Open Floor	20	69	BandWith
MUSIC LIBRARY	09	489 SF	Library: Reading Rooms	50	10	BandWith
CHANGING	28	46 SF	Locker Rooms	50	1	BandWith
LOCKERS	44	140 SF	Locker Rooms	50	3	BandWith
WATER & FIRE PUMP	43	175 SF	Locker Rooms	50	4	BandWith
11358 SF					447	

OCCUPANCY BY SPACE - TENANT 1 - COFFEE SHOP						
Name	Number	Area	Use of Space (Chicago 2019)	OLF-CBC2019	OCCUPANT	Comments
Maint.	44	31 SF	Accessory storage areas, mechanical equipment rooms	300	1	Coffee Shop
STORAGE	25	82 SF	Accessory storage areas, mechanical equipment rooms	300	1	
SEATING	38	578 SF	Assembly without fixed seats: Unconcentrated (tables and chairs)	15	39	Coffee Shop
COFFEE SHOP FOOD & SERVICE	39	451 SF	Kitchens, Commercial	200	3	Coffee Shop
1143 SF					44	

OCCUPANCY BY SPACE - TENANT 2 - BUSINESS OFFICE						
Name	Number	Area	Use of Space (Chicago 2019)	OLF-CBC2019	OCCUPANT	Comments
STORAGE	25	82 SF	Accessory storage areas, mechanical equipment rooms	300	1	
NORTH TENANT	46	1981 SF	Business areas	100	20	North Business Tenant
2063 SF					21	

CODE / LIFESAFETY DATA

LEGEND

- FEC
FE
DOOR
Egress Width (in)
Egress Capacity
Occupant Load
4 HOUR FIRE RATING
3 HOUR FIRE RATING
2 HOUR FIRE RATING
1 HOUR FIRE RATING
EGRESS PATH
COMMON PATH
DEAD END PATH

CONSTRUCTION TYPE / USE GROUP / FIRE PROTECTION

CONSTRUCTION TYPE(S):

TYPE III-B FULLY SPRINKLERED, MASONRY NONCOMBUSTIBLE EXTERIOR WALLS.
UNPROTECTED COMBUSTIBLE ROOF STRUCTURE

USE GROUP(S):

A-3 ASSEMBLY
A-2 ASSEMBLY
B BUSINESS

FIRE PROTECTION SYSTEM(S):

AUTOMATIC SPRINKLERS: FULLY SPRINKLERED
FIRE HOSE CABINETS: NOT REQUIRED
FIRE EXTINGUISHERS: EVERY 75'-0"
FIRE ALARM: MIN. PER CODE

FIRE RESISTANCE RATINGS II-B

EXIT ENCLOSURES:

HORIZONTAL EXIT: NOT APPLICABLE
STAIR ENCLOSURES: 1 HOUR 3 STORIES OR LESS:

EXIT PASSAGEWAY

CORRIDORS: 0 HOURS

BUILDING & STRUCTURE ELEMENTS

COLUMNS: 0 HOURS
LOAD BEARING: 2 HOURS
EXTERIOR WALLS: 0 HOURS
FLOOR CONSTRUCTION: 0 HOURS
ROOF CONSTRUCTION: 0 HOURS
SHAFTS: 1 HOUR
ELEVATOR ENCLOSURES: NOT APPLICABLE

BUILDING HEIGHT

ALLOWABLE HEIGHT: 1 STORY / 45'

ACTUAL HEIGHT:

1 STORY / 25' (EXISTING)

PLAN AREA DATA

ALLOWABLE AREA: S.F. AREA:
TABULAR AREA - (TABLE 506.2) 20,000
FRONTAGE INCREASE (506.3) = 49% 9,983
SPRINKLER INCREASE (506.3) = 200% N/A
ALLOWABLE AREA - PER FLOOR 29,983
ACTUAL AREA - PER FLOOR 19,198
ALLOWABLE AREA - TOTAL BUILDING 29,983

EXIT CAPACITY

FIRE AREA: SINGLE
FLOOR LEVEL: ENTIRE BUILDING

ZONE / FLOOR	OCC LOAD	EXIT TYPE & CAPACITY	WIDTH REQUIRED	WIDTH PROVIDED
FIRST FLOOR BANDWITH	446	STAIRS @ 0.20' / OCC	NA	NA
FIRST FLOOR BANDWITH	43	DOORS @ 0.15' / OCC	89"	167"
FIRST FLOOR COFFEE SHOP	21	STAIRS @ 0.20' / OCC	NA	NA
FIRST FLOOR COFFEE SHOP	21	DOORS @ 0.15' / OCC	6.45"	72"
FIRST FLOOR NORTH TENANT	21	STAIRS @ 0.20' / OCC	NA	NA
FIRST FLOOR NORTH TENANT	21	DOORS @ 0.15' / OCC	4.2"	37"

TRAVEL DISTANCES

MAX. EGRESS TRAVEL DISTANCE: (W/ AUTOMATIC SPRINKLER PROTECTION)	GROUP 'B' = 300' GROUP 'A' = 250'
COMMON PATH OF TRAVEL:	GROUP 'B' = 115' GROUP 'A' = 75'
DEAD END CORRIDORS:	GROUP 'B' = 50' GROUP 'A' = 20'

PLUMBING FIXTURE COUNT

SEE SHEET G0.101

Lamar Johnson
Collaborative

35 EAST WALKER DRIVE, SUITE 1800
CHICAGO, IL 60611
PH 312.658.0747

BandWith Chicago
Community Performing Arts Center
148 S. California Ave. Chicago IL

ISSUE FOR GMP

DRAWING ISSUE

DESCRIPTION	DATE
DESIGN DEVELOPMENT	06/07/2023
ISSUE FOR PERMIT	09/15/2023
PERMIT REVISIONS	02/29/2024
ISSUE FOR GMP	03/25/2024
PERMIT REVISIONS	07/25/2024
ISSUE FOR CONSTRUCTION	10/03/2024
BULLETIN 03	03/25/2025

BUILDING MAP

DRAWING TITLE
LIFE SAFETY PLANS

DRAWING NO.

G0.102

Job # 005987

F2 LIGHT FIXTURE CENTERED
IN STRUCTURAL BAY, TYP.

LIGHT FIXTURE MOUNTED TO FACE OF
SLOPING ROOF DECK.
COORDINATE PLACEMENT OF
FIXTURES AND CONDUIT WITH
ARCHITECT PRIOR TO INSTALLING

NOTE: F2 LIGHT FIXTURES TO
CONTINUE THEIR LAYOUT
ABOVE DANCE STUDIO CEILING

2 REFLECTED CEILING PLAN ABOVE DANCE STUDIO
1/8" = 1'-0"



1 OVERALL REFLECTED CEILING PLAN - LEVEL 01
1/8" = 1'-0"

RCP NOTES / LEGEND

RCP SYMBOL LEGEND

LIGHT FIXTURE TYPES

- 2x4 RECESSED FLAT PANEL
- 2x2 RECESSED FLAT PANEL
- SURFACE MOUNTED CIRCULAR FIXTURE
- RECESSED SQUARE DOWNLIGHT
- RECESSED LINEAR FIXTURE
- LINEAR PENDANT FIXTURE
- RECESSED WALL WASH
- CYLINDER PENDANT FIXTURE

CEILING TYPES

- GYPSUM BOARD
- 24" X 24" ACOUSTICAL CEILING TILE
- 24" X 48" ACOUSTICAL CEILING TILE

DIFFUSER TYPES

- SQUARE SUPPLY DIFFUSER
- SQUARE RETURN DIFFUSER
- EXHAUST

KEYED NOTES

NO.	DESCRIPTION
206	NEW SKYLIGHT ABOVE
209	AP-2 CEILING MOUNTED ACOUSTIC PANEL. EACH PANEL SIZE IS APPROXIMATELY 169"L X 56"W (TOTAL SQUARE FOOTAGE TO BE AT A MINIMUM OF 1100 SF). ACOUSTICAL PANELS TO BE SURFACE MOUNTED ALONG ANGLED CEILING BETWEEN EXISTING BEAMS & SIT BELOW BOTTOM EDGE OF SKYLIGHT. PROVIDE CENTER SEAM LINES WITHIN PANELS, AS NECESSARY. REFER TO FINISH LEGEND FOR MORE INFORMATION.
210	LIGHTING FIXTURES TO BE MOUNTED CENTERED IN ACT PANEL
211	AL-1 ASSEMBLY CONTINUES OVER THE TOP OF PRACTICE ROOMS 16-20.

GENERAL NOTES

- REFER TO [A2.200](#) FOR FINISH LEGEND
- CONTRACTOR TO REVIEW SPRINKLER PIPING LAYOUT WITH ARCHITECT PRIOR TO INSTALLATION IN ALL AREAS OPEN TO STRUCTURE.
- ALL A.C.T. CEILINGS TO BE ACT-1 U.N.O.
- ALL GYP.BD. CEILINGS TO BE PAINTED PT-1 U.N.O.
- ALL LIGHT FIXTURES / EXIT SIGN DEVICES ARE SHOWN FOR REFERENCE ONLY. SEE ELECTRICAL DRAWINGS FOR EXACT QUANTITY, LOCATION AND TYPE.
- ALL MECHANICAL GRILLES, DIFFUSERS, ETC. ARE SHOWN FOR REFERENCE ONLY. SEE MECHANICAL DRAWINGS FOR EXACT QUANTITY, LOCATION, AND TYPE.
- ALL SPRINKLER HEADS AND FIRE PROTECTION DEVICES ARE SHOWN FOR REFERENCE ONLY. SEE MECHANICAL DRAWINGS FOR EXACT QUANTITY, LOCATION, AND TYPE.
- CENTER ACOUSTICAL TILE GRID IN ROOM, AS INDICATED ON RCP, U.N.O.
- CENTER LIGHT FIXTURES IN ACOUSTICAL TILE AS INDICATED ON RCP, U.N.O.
- ALL WALLS EXTEND TO STRUCTURE U.N.O.
- REFER TO SHEET [A4.402](#) FOR TYPICAL FIRE RATED PARTITION TOP OF WALL AND PENETRATION CONDITIONS.
- PLEASE REFER TO MECHANICAL DRAWINGS FOR DUCT PENETRATIONS AT FIRE RATED PARTITIONS.

BUILDING MAP

DRAWING TITLE
OVERALL REFLECTED CEILING PLAN

DRAWING NO.
A2.201

Job #
005987

Lamar Johnson Collaborative

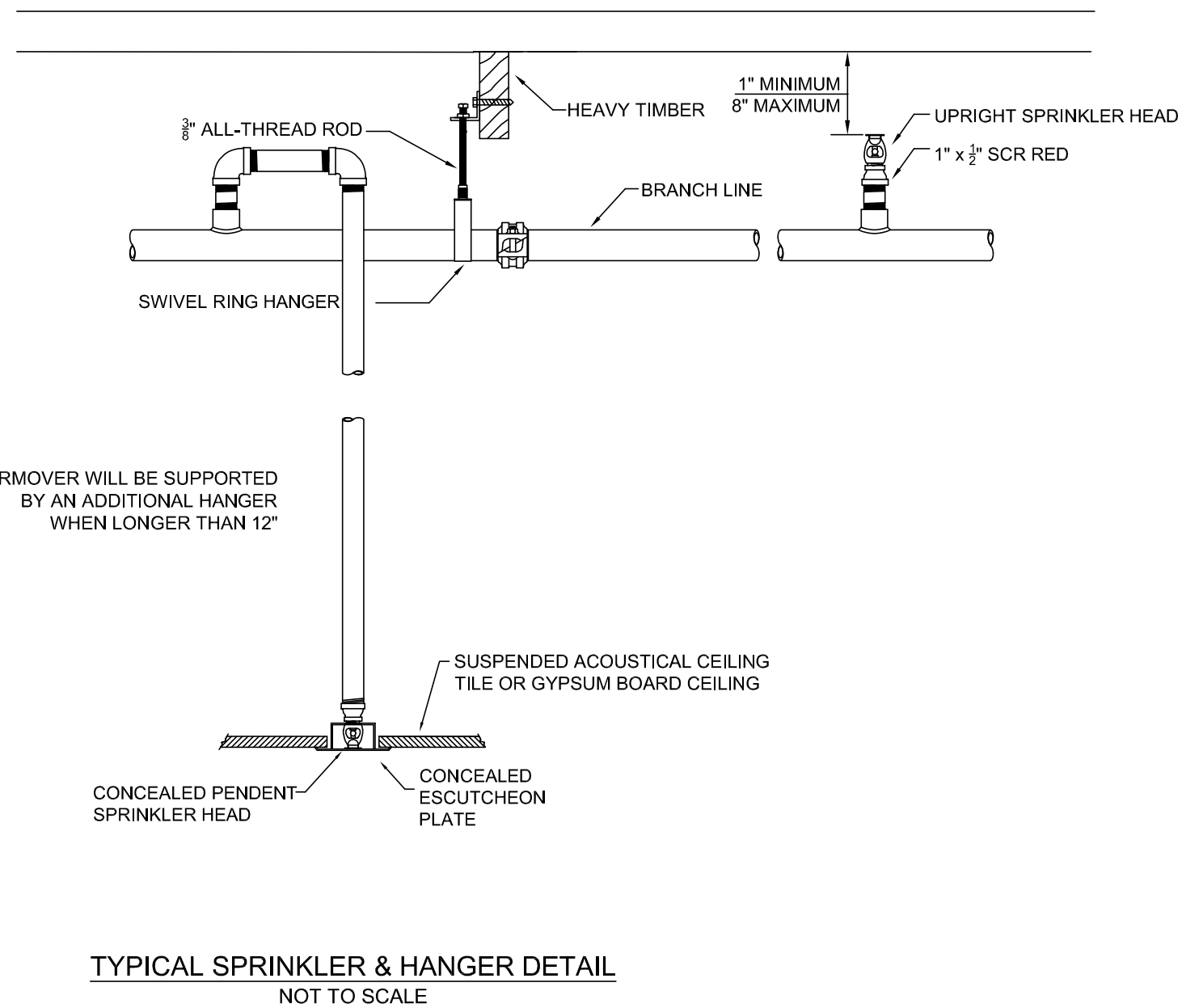
35 EAST WACKER DRIVE, SUITE 1800
CHICAGO, IL 60601
PH 312.658.0747

BandWith Chicago

Community Performing Arts Center
148 S. California Ave. Chicago IL

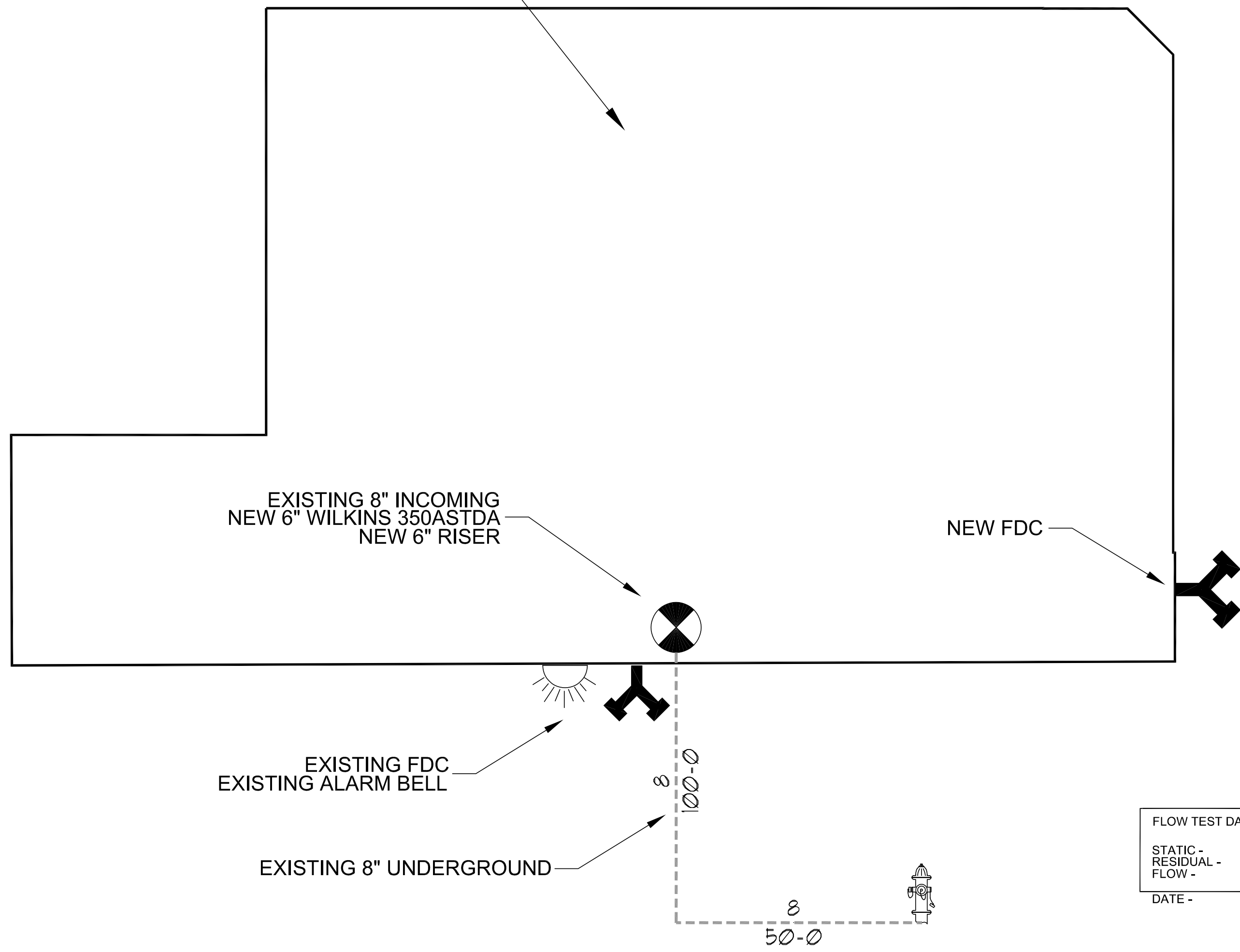
ISSUE FOR GMP

DESCRIPTION	DATE
SCHEMATIC DESIGN	05/01/2023
DESIGN DEVELOPMENT	06/07/2023
ISSUE FOR PERMIT	09/15/2023
PERMIT REVISIONS	02/29/2024
ISSUE FOR GMP	03/26/2024
PERMIT REVISIONS	07/25/2024
ADDENDUM 01	08/14/2024
ISSUE FOR CONSTRUCTION	10/03/2024
SUBMITTAL 265600	11/21/2024
BULLETIN 01	01/22/2025
BULLETIN 02	02/18/2025
BULLETIN 03	03/25/2025



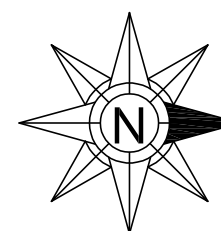
WEST ADAMS STREET

AREA OF WORK



WEST WILCOX STREET

SOUTH CALIFORNIA AVENUE



OVERALL SITE PLAN
SCALE: 1/16" = 1'-0"

SCOPE OF WORK:

- ENTIRE BUILDING:
- DEMO EXISTING 8" SINGLE CHECK BACKFLOW, LINE PIPING, AND ASSOCIATED SPRINKLER HEADS
 - INSTALL NEW FIRE SPRINKLER SYSTEM PER NFPA 13
 - INSTALL NEW 6" WILKINS 350ASTDA BACKFLOW AT EXISTING 8" INCOMING AND EXISTING 4" DOMESTIC WATER SERVICE (BY OTHERS)
 - FURNISH NEW SPRINKLER HEADS TO ACCOMMODATE NEW TENANT LAYOUT PER NFPA 13

ALL DESIGN AND INSTALLATION SHALL COMPLY WITH THE **CITY OF CHICAGO** AND **NFPA #13, 2016 EDITION**.

BUILDING INFORMATION:

CONSTRUCTION TYPE: IV
BUILDING HEIGHT: 23'-10" (1 FLOOR)
EXISTING DOMESTIC:

DESIGN CRITERIA:

GOVERNING CODE: CHICAGO CITY CODE
OCCUPANCY CLASSIFICATION: BUSINESS B
SPRINKLER SPACING: LIGHT HAZARD 225 SQ. FT. - ORDINARY HAZARD 130 SQ. FT.

MATERIALS:

ALL MATERIAL SHALL BE LISTED BY UNDERWRITERS LABORATORIES AND APPROVED FOR FIRE PROTECTION USE. SEE MATERIAL SUBMITTAL FOR ADDITIONAL DETAILS AND LISTING INFORMATION.

HANGERS:

ALL HANGERS PROVIDED IN ACCORDANCE WITH NFPA #13

SYSTEM ACCEPTANCE TESTING:

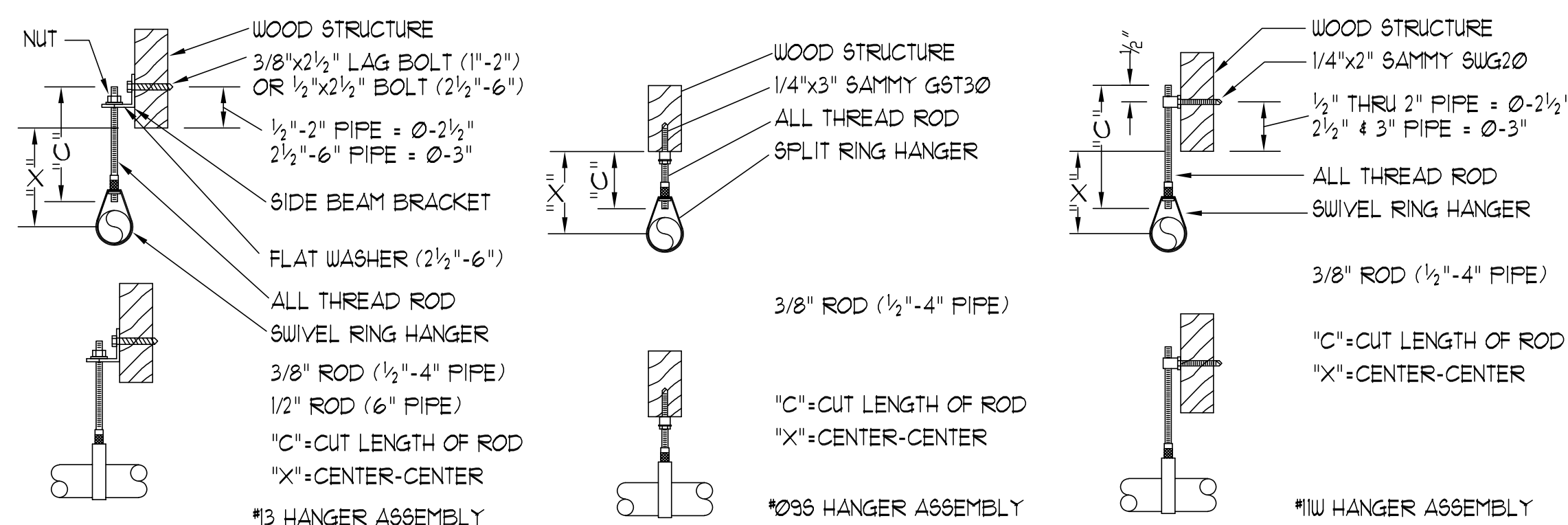
ALL PIPING SHALL BE HYDROSTATICALLY TESTED AT 200 PSI OR 50 PSI IN EXCESS OF OPERATING PRESSURE AND SHALL MAINTAIN THAT PRESSURE FOR 2 HOURS.

ALL PIPING TO BE TESTED IN ACCORDANCE WITH THE REQUIREMENTS OF NFPA #13 AND THE CITY OF CHICAGO.

CHICAGO FIRE PROTECTION SHALL SUPPLY A CONTRACTORS MATERIAL TEST CERTIFICATE.

MISCELLANEOUS:

ALL ELECTRICAL WIRING TO BE DONE BY OTHERS.
PAINTING OF PIPE AND/OR BAGGING SPRINKLERS FOR PAINTING TO BE DONE BY OTHERS



TYPICAL HANGER DETAILS

CERTIFICATION NO.
105537

ERIC L. TATUM SR.
NICET LEVEL III
WATER-BASED SYSTEMS LAYOUT

APPROVAL STAMP

LJC
SUBMITTAL REVIEW FORM
PROJECT: Bandwith Chicago
SUBMITTAL NO.: 0000001
DATE RECEIVED: 11/10/24
REVIEWED BY: [Signature]
DATE RETURNED: 11/10/24

1. In the area of the coffee shop, please run the lines parallel to, and up in between the joists to maximize overhead clearance in this area, per emails dated 11/15/24.
2. Please see notes regarding wall conflicts on following page

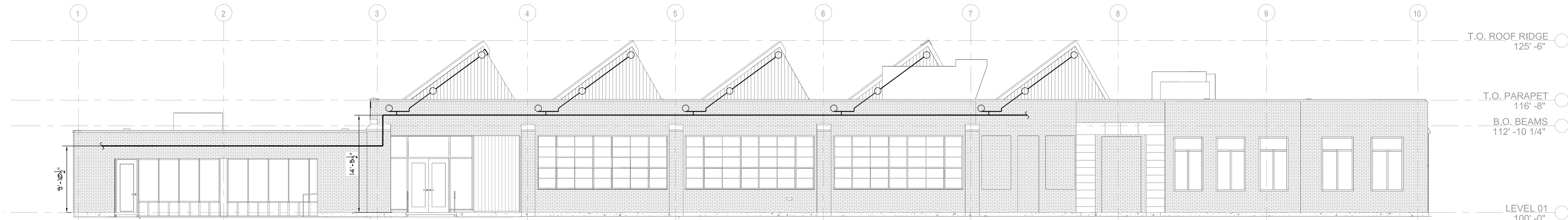


Chicago Fire Protection

10355 S Kedzie Avenue
Chicago, Illinois 60655
Phone (773) 366-3477
Fax (773) 366-3333

STATE LICENSE NO. FSC03448

SPRINKLER ESCUTCHEON DATA											
SPRINKLER LEGEND											
SPRINKLER	TEMP	TEMP	TEMP	TEMP	TEMP	TEMP	TEMP	TEMP	TEMP	TEMP	TEMP
1	2	3	4	5	6	7	8	9	10	11	12
248	1/2"	1/2"	5.6	5.6	5.6	5.6	5.6	5.6	5.6	5.6	5.6
199	1/2"	1/2"	5.6	5.6	5.6	5.6	5.6	5.6	5.6	5.6	5.6
199	1/2"	1/2"	5.6	5.6	5.6	5.6	5.6	5.6	5.6	5.6	5.6
199	1/2"	1/2"	5.6	5.6	5.6	5.6	5.6	5.6	5.6	5.6	5.6
199	1/2"	1/2"	5.6	5.6	5.6	5.6	5.6	5.6	5.6	5.6	5.6
199	1/2"	1/2"	5.6	5.6	5.6	5.6	5.6	5.6	5.6	5.6	5.6
199	1/2"	1/2"	5.6	5.6	5.6	5.6	5.6	5.6	5.6	5.6	5.6
199	1/2"	1/2"	5.6	5.6	5.6	5.6	5.6	5.6	5.6	5.6	5.6
199	1/2"	1/2"	5.6	5.6	5.6	5.6	5.6	5.6	5.6	5.6	5.6
199	1/2"	1/2"	5.6	5.6	5.6	5.6	5.6	5.6	5.6	5.6	5.6
199	1/2"	1/2"	5.6	5.6	5.6	5.6	5.6	5.6	5.6	5.6	5.6
199	1/2"	1/2"	5.6	5.6	5.6	5.6	5.6	5.6	5.6	5.6	5.6
199	1/2"	1/2"	5.6	5.6	5.6	5.6	5.6	5.6	5.6	5.6	5.6
199	1/2"	1/2"	5.6	5.6	5.6	5.6	5.6	5.6	5.6	5.6	5.6
199	1/2"	1/2"	5.6	5.6	5.6	5.6	5.6	5.6	5.6	5.6	5.6
199	1/2"	1/2"	5.6	5.6	5.6	5.6	5.6	5.6	5.6	5.6	5.6
199	1/2"	1/2"	5.6	5.6	5.6	5.6	5.6	5.6	5.6	5.6	5.6
199	1/2"	1/2"	5.6	5.6	5.6	5.6	5.6	5.6	5.6	5.6	5.6
199	1/2"	1/2"	5.6	5.6	5.6	5.6	5.6	5.6	5.6	5.6	5.6
199	1/2"	1/2"	5.6	5.6	5.6	5.6	5.6	5.6	5.6	5.6	5.6
199	1/2"	1/2"	5.6	5.6	5.6	5.6	5.6	5.6	5.6	5.6	5.6
199	1/2"	1/2"	5.6	5.6	5.6	5.6	5.6	5.6	5.6	5.6	5.6
199	1/2"	1/2"	5.6	5.6	5.6	5.6	5.6	5.6	5.6	5.6	5.6
199	1/2"	1/2"	5.6	5.6	5.6	5.6	5.6	5.6	5.6	5.6	5.6
199	1/2"	1/2"	5.6	5.6	5.6	5.6	5.6	5.6	5.6	5.6	5.6
199	1/2"	1/2"	5.6	5.6	5.6	5.6	5.6	5.6	5.6	5.6	5.6
199	1/2"	1/2"	5.6	5.6	5.6	5.6	5.6	5.6	5.6	5.6	5.6
199	1/2"	1/2"	5.6	5.6	5.6	5.6	5.6	5.6	5.6	5.6	5.6
199	1/2"	1/2"	5.6	5.6	5.6	5.6	5.6	5.6	5.6	5.6	5.6
199	1/2"	1/2"	5.6	5.6	5.6	5.6	5.6	5.6	5.6	5.6	5.6
199	1/2"	1/2"	5.6	5.6	5.6	5.6	5.6	5.6	5.6	5.6	5.6
199	1/2"	1/2"	5.6	5.6	5.6	5.6	5.6	5.6	5.6	5.6	5.6
199	1/2"	1/2"	5.6	5.6	5.6	5.6	5.6	5.6	5.6	5.6	5.6
199	1/2"	1/2"	5.6	5.6	5.6	5.6	5.6	5.6	5.6	5.6	5.6
199	1/2"	1/2"	5.6	5.6	5.6	5.6	5.6	5.6	5.6	5.6	5.6
199	1/2"	1/2"	5.6	5.6	5.6	5.6	5.6	5.6	5.6	5.6	5.6
199	1/2"	1/2"	5.6	5.6	5.6	5.6	5.6	5.6	5.6	5.6	5.6
199	1/2"	1/2"	5.6	5.6	5.6	5.6	5.6	5.6	5.6	5.6	5.6
199	1/2"	1/2"	5.6	5.6	5.6	5.6	5.6	5.6	5.6	5.6	5.6
199	1/2"	1/2"	5.6	5.6	5.6	5.6	5.6	5.6	5.6	5.6	5.6
199	1/2"	1/2"	5.6	5.6	5.6	5.6	5.6	5.6	5.6	5.6	5.6
199	1/2"	1/2"	5.6	5.6	5.6	5.6	5.6	5.6	5.6	5.6	5.6
199	1/2"	1/2"	5.6	5.6	5.6	5.6	5.6	5.6	5.6	5.6	5.6
199	1/2"	1/2"	5.6	5.6	5.6	5.6	5.6	5.6	5.6	5.6	5.6
199	1/2"	1/2"	5.6	5.6	5.6	5.6	5.6	5.6	5.6	5.6	5.6
199	1/2"	1/2"	5.6	5.6	5.6	5.6	5.6	5.6	5.6	5.6	5.6
199	1/2"	1/2"	5.6	5.6	5.6	5.6	5.6	5.6	5.6	5.6	5.6
199	1/2"	1/2"	5.6	5.6	5.6	5.6	5.6	5.6	5.6	5.6	5.6
199	1/2"	1/2"	5.6	5.6	5.6	5.6	5.6	5.6	5.6	5.6	5.6
199	1/2"	1/2"	5.6	5.6	5.6	5.6	5.6	5.6	5.6	5.6	5.6
199	1/2"	1/2"	5.6	5.6	5.6	5.6	5.6	5.6	5.6	5.6	5.6
199	1/2"	1/2"	5.6	5.6	5.6	5.6	5.6	5.6	5.6	5.6	5.6
199	1/2"	1/2"	5.6	5.6	5.6	5.6	5.6	5.6	5.6	5.6	5.6
199	1/2"	1/2"	5.6	5.6	5.6	5.6	5.6	5.6	5.6	5.6	5.6
199	1/2"	1/2"	5.6	5.6	5.6	5.6	5.6	5.6	5.6	5.6	5.6
199	1/2"	1/2"	5.6	5.6	5.6	5.6	5.6	5.6	5.6	5.6	5.6
199	1/2"	1/2"	5.6	5.6	5.6	5.6	5.6	5.6	5.6	5.6	5.6
199	1/2"	1/2"	5.6	5.6	5.6	5.6	5.6	5.6	5.6	5.6	5.6
199	1/2"	1/2"	5.6	5.6	5.6	5.6	5.6	5.6	5.6	5.6	5.6
199	1/2"	1/2"	5.6	5.6	5.6	5.6	5.6	5.6	5.6	5.6	5.6
199	1/2"	1/2"	5.6	5.6	5.6	5.6	5.6	5.6	5.6	5.6	5.6
199	1/2"	1/2"	5.6	5.6	5.6	5.6	5.6	5.6	5.6	5.6	5.6
199	1/2"	1/2"	5.6	5.6	5.6	5.6	5.6	5.6	5.6	5.6	5.6
199	1/2"	1/2"	5.6	5.6	5.6	5.6	5.6	5.6	5.6	5.6	5.6
199	1/2"	1/2"	5.6	5.6	5.6	5.6	5.6	5.6	5.6	5.6	5.6
199	1/2"	1/2"	5.6	5.6	5.6	5.6	5.6	5.6	5.6	5.6	5.6
199	1/2"	1/2"	5.6	5.6	5.6	5.6	5.6	5.6	5.6	5.6	5.6
199	1/2"	1/2"	5.6	5.6	5.6	5.6	5.6	5.6	5.6	5.6	5.6
199	1/2"	1/2"	5.6	5.6	5.6	5.6	5.6	5.6	5.6	5.6	5.6
199	1/2"	1/2"	5.6	5.6	5.6	5.6	5.6	5.6	5.6	5.6	5.6
199	1/2"	1/2"	5.6	5.6	5.6	5.6	5.6	5.6	5.6	5.6	5.6
199	1/2"	1/2"	5.6	5.6	5.6	5.6	5.6	5.6	5.6	5.6	5.6
199	1/2"	1/2"	5.6	5.6	5.6	5.6	5.6	5.6	5.6	5.6	5.6
199	1/2"	1/2"	5.6	5.6	5.6	5.6	5.6	5.6	5.6	5.6	5.6
199	1/2"	1/2"	5.6	5.6	5.6	5.6	5.6	5.6	5.6	5.6	5.6
199	1/2"	1/2"	5.6	5.6	5.6	5.6	5.6	5.6	5.6	5.6	5.6
199	1/2"	1/2"	5.6	5.6	5.6	5.6	5.6	5.6	5.6	5.6	5.6
199	1/2"	1/2"	5.6	5.6	5.6	5.6	5.6	5.6	5.6	5.6	5.6
199	1/2"	1/2"	5.6	5.6	5.6	5.6	5.6	5.6	5.6	5.6	5.6
199	1/2"	1/2"	5.6	5.6	5.6	5.6	5.6	5.6	5.6	5.6	5.6
199	1/2"	1/2"	5.6	5.6	5.6	5.6	5.6	5.6	5.6	5.6	5.6
199	1/2"	1/2"	5.6	5.6	5.6	5.6	5.6	5.6	5.6	5.6	5.6
199	1/2"	1/2"	5.6	5.6	5.6	5.6	5.6	5.6	5.6	5.6	5.6
199	1/2"	1/2"	5.6	5.6	5.6	5.6	5.6	5.6	5.6	5.6	5.6
199	1/2"	1/2"	5.6	5.6	5.6	5.6	5.6	5.6	5.6	5.6	5.6
199	1/2"	1/2"	5.6	5.6	5.6	5.6	5.6	5.6	5.6	5.6	5.6
199	1/2"	1/2"	5.6	5.6	5.6	5.6	5.6	5.6</			



EAST SECTION VIEW
SCALE: 1/8" = 1'-0"

ALL CALCULATIONS HAVE 5 PSI
BUILT IN SAFETY FACTOR PER
CHICAGO MUNICIPAL CODE

FLOW TEST DATA USED FOR
HYDRAULIC CALCULATIONS:

STATIC -	35 PSI
RESIDUAL -	25 PSI
FLOW -	2620 GPM

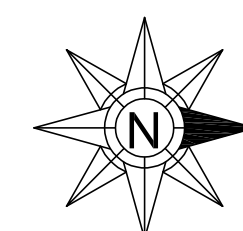
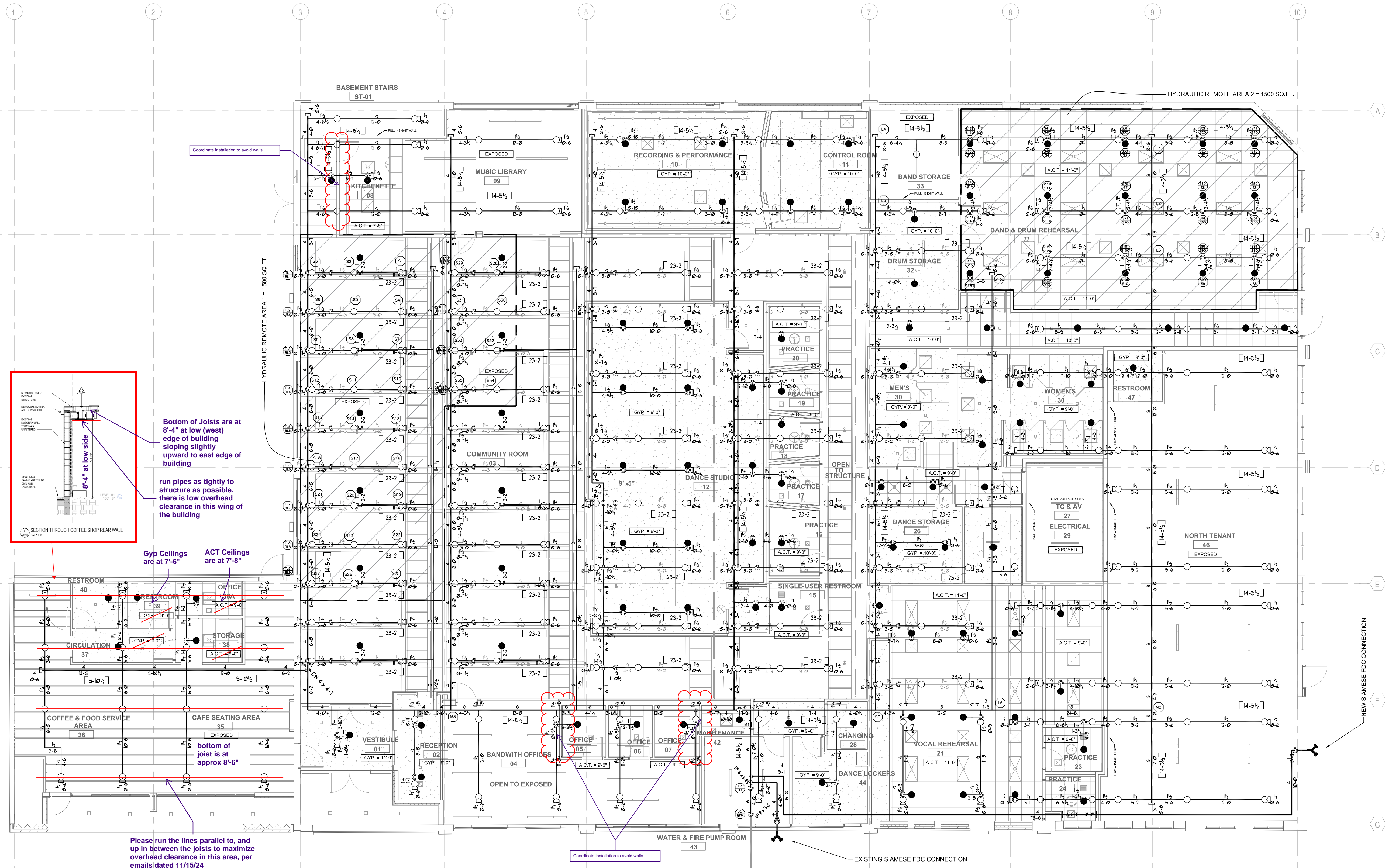
DATE - 8/3/2023

SAFETY MARGIN = 4.0 PSI

HYDRAULIC DATA PLACARD	
AS SHOWN ON PRINT NO: FP-2	DATE: 11/5/2024
JOB NAME: BANDWITH	
ADDRESS: 148 S. CALIFORNIA AVENUE, CHICAGO, IL	
CONTRACT NO: 24-1178	SYSTEM #/AREA: 1
IS DESIGNED FOR 35 SPRINKLERS TO DISCHARGE AT A DENSITY OF 0.15 GPM OVER A MAX FLOOR AREA OF 1500 SQ. FT. WHEN SUPPLIED WITH WATER AT A RATE OF 875.6 GPM AT A PRESSURE OF 29.9 PSI AT: BASE OF RISER	
SPKR SIN: VK3001	K-FACTOR: 5.6
ORIFICE: 1/2"	ELEVATION AT HIGHEST OUTLET: 24'-3"
INSIDE HOSE ALLOWANCE: N/A	OUTSIDE HOSE: 250
MAX STORAGE HEIGHT: N/A	
OCCUPANCY CLASS: ORDINARY HAZARD GROUP I / ASSEMBLY	

SAFETY MARGIN = 6.0 PSI

HYDRAULIC DATA PLACARD	
AS SHOWN ON PRINT NO: FP-2	DATE: 8/30/2024
JOB NAME: BANDWITH	
ADDRESS: 148 S. CALIFORNIA AVENUE, CHICAGO, IL	
CONTRACT NO: 24-1178	SYSTEM #/AREA: 2
IS DESIGNED FOR 15 SPRINKLERS TO DISCHARGE AT A DENSITY OF 0.12 GPM OVER A MAX FLOOR AREA OF 1500 SQ. FT. WHEN SUPPLIED WITH WATER AT A RATE OF 403.0 GPM AT A PRESSURE OF 33.7 PSI AT: BASE OF RISER	
SPKR SIN: VK4621	K-FACTOR: 5.6
ORIFICE: 1/2"	ELEVATION AT HIGHEST OUTLET: 14'-8"
INSIDE HOSE ALLOWANCE: N/A	OUTSIDE HOSE: 100
MAX STORAGE HEIGHT: N/A	
OCCUPANCY CLASS: ASSEMBLY	



OVERALL FIRE PROTECTION PLAN
SCALE: 1/8" = 1'-0"

CERTIFICATION NO.
105537

ERIC L. TATUM SR.
NICET LEVEL III
WATER-BASED SYSTEMS LAYOUT

APPROVAL STAMP

LJ31	
REVIEW	
PROJECT: Bandwith Chicago	PROJECT NO: 009897
DATE RECEIVED: 11/15/24	DATE REVIEWED: 11/15/24
DATE RETURNED: 11/15/24	DATE RETURNED: 11/15/24
REMARKS: 1. In the area of the coffee shop, please run the lines parallel to, and up in between the joists to maximize overhead clearance in this area, per emails dated 11/15/24.	
REMARKS: 2. Please see notes regarding wall conflicts on following page	



Chicago Fire Protection
10355 S Kedzie Avenue
Chicago, Illinois 60655
Phone (773) 366-3477
Fax (773) 366-3333
STATE LICENSE NO. FSC0348

SPRINKLER LEGEND		SPRINKLER EJECTION DATA	
SPRINKLER	TYPE	SPRINKLER	TYPE
1	150°	1	150°
2	150°	2	150°
3	150°	3	150°
4	150°	4	150°
5	150°	5	150°
6	150°	6	150°
7	150°	7	150°
8	150°	8	150°
9	150°	9	150°
10	150°	10	150°
11	150°	11	150°
12	150°	12	150°
13	150°	13	150°
14	150°	14	150°
15	150°	15	150°
16	150°	16	150°
17	150°	17	150°
18	150°	18	150°
19	150°	19	150°
20	150°	20	150°
21	150°	21	150°
22	150°	22	150°
23	150°	23	150°
24	150°	24	150°
25	150°	25	150°
26	150°	26	150°
27	150°	27	150°
28	150°	28	150°
29	150°	29	150°
30	150°	30	150°
31	150°	31	150°
32	150°	32	150°
33	150°	33	150°
34	150°	34	150°
35	150°	35	150°
36	150°	36	150°
37	150°	37	150°
38	150°	38	150°
39	150°	39	150°
40	150°	40	150°
41	150°	41	150°
42	150°	42	150°
43	150°	43	150°
44	150°	44	150°
45	150°	45	150°
46	150°	46	150°
47	150°	47	150°
48	150°	48	150°
49	150°	49	150°
50	150°	50	150°
51	150°	51	150°
52	150°	52	150°
53	150°	53	150°
54	150°	54	150°
55	150°	55	150°
56	150°	56	150°
57	150°	57	150°
58	150°	58	150°
59	150°	59	150°
60	150°	60	150°
61	150°	61	150°
62	150°	62	150°
63	150°	63	150°
64	150°	64	150°
65	150°	65	150°
66	150°	66	150°
67	150°	67	150°
68	150°	68	150°
69	150°	69	150°
70	150°	70	150°
71	150°	71	150°
72	150°	72	150°
73	150°	73	150°
74	150°	74	150°
75	150°	75	150°
76	150°	76	150°
77	150°	77	150°
78	150°	78	150°
79	150°	79	150°
80	150°	80	150°
81	150°	81	150°
82	150°	82	150°
83	150°	83	150°
84	150°	84	150°
85	150°	85	150°
86	150°	86	150°
87	150°	87	150°
88	150°	88	150°
89	150°	89	150°
90	150°	90	150°
91	150°	91	150°
92	150°	92	150°
93	150°	93	150°
94	150°	94	150°
95	150°	95	150°
96	150°	96	150°
97	150°	97	150°
98	150°	98	150°
99	150°	99	150°
100	150°	100	150°

BANDWITH
148 S. California Avenue
Chicago, Illinois 60612

CONTRACT
WITH:

ARCHITECT REVIEW COMMENTS
CHICAGO FIRE REVIEW LETTER
REVISION
FIRE PROTECTION

DRAWN BY: DW
CHECKED BY: ET

SCALE: AS NOTED
DATE: 08/1/2024

PROJECT NO: 357
SHEET NO: 357

APPROVAL AGENCIES
CHICAGO FPB

JOB NO: CFP24-1178

SHEET NO.

FP-2 of 2