



HINMAN
DEVELOPMENT ♦ MANAGEMENT ♦ LEASING

OFFICE SPACE FOR LEASE

1001 28TH STREET

1001 28TH STREET SW | WYOMING, MI 49509

188,604 SF

GRAND RAPIDS OFFICE | 616.957.3711 | 2851 CHARLEVOIX DR SE, SUITE 208, GRAND RAPIDS, MI 49546



1001 28TH STREET

Wyoming

East Grand Rapids

OFFICE SPACE FOR LEASE

1001 28TH STREET

1001 28TH STREET SW | WYOMING, MI 49509

1001 28TH STREET IS A 2-STORY, 188,604 SF FLEX OFFICE BUILDING LOCATED ALONG BUSTLING 28TH STREET SW. THIS HIGH PROFILE BUILDING OFFERS LARGE OPEN FLOORPLATES AND AN AMPLE AMOUNT OF PARKING. 1001 28TH STREET'S REGIONAL LOCATION OFFERS EASY ACCESS TO US-131, I-196 & DOWNTOWN GRAND RAPIDS. THIS SCALE AND REGIONAL LOCATION OF THIS BUILDING IS UNMATCHED IN THE REGION.



SUBURBAN
OFFICE SETTING,
PROFESSIONALLY
MANAGED



PYLON SIGNAGE
OPPORTUNITIES
AVAILABLE



CONVENIENT &
FREE EMPLOYEE /
VISITOR PARKING



REGIONAL
LOCATION WITH
EASY ACCESS TO US-
131, I-196 & M-6



LESS THAN 10
MINUTE DRIVE
TO DOWNTOWN
GRAND RAPIDS



THE RAPID BUS
STOP LOCATED
IN FRONT OF
BUILDING



MULTIPLE RETAIL &
DINING OPTIONS
WITHIN AREA



24 HOUR CARD
ACCESS & VIDEO
SECURITY



LOADING DOCK
WITH FREIGHT
ELEVATOR

LEASING //

HINMANCOMPANY.COM



KIRK DRIESENKA
REGIONAL DIRECTOR OF LEASING
616.301.2731
KIRKD@HINMANCOMPANY.COM



ANMAR ATCHU
VP OF MARKETING & LEASING
269.488.3642
ANMARA@HINMANCOMPANY.COM

OFFICE SPACE FOR LEASE

1001 28TH STREET

1001 28TH STREET SW | WYOMING, MI 49509

PARKING AREA [614 SPACES]



LEASING //

[HINMANCOMPANY.COM](https://www.hinmancompany.com)



KIRK DRIESENKA
REGIONAL DIRECTOR OF LEASING
616.301.2731
KIRKD@HINMANCOMPANY.COM



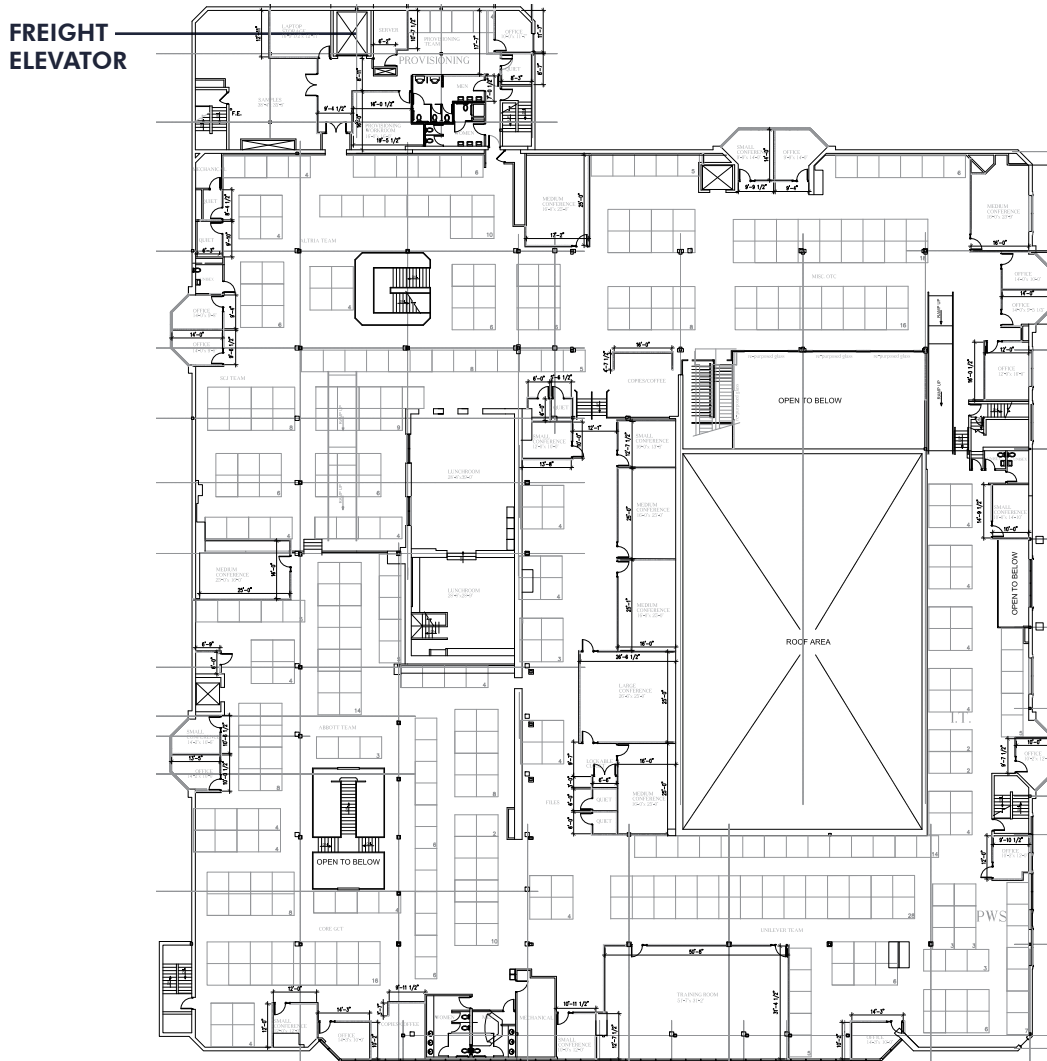
ANMAR ATCHU
VP OF MARKETING & LEASING
269.488.3642
ANMARA@HINMANCOMPANY.COM

OFFICE SPACE FOR LEASE

1001 28TH STREET

1001 28TH STREET SW | WYOMING, MI 49509

2ND FLOOR | 63,263 SF



LEASING //

HINMANCOMPANY.COM



KIRK DRISENGA
REGIONAL DIRECTOR OF LEASING
616.301.2731
KIRKD@HINMANCOMPANY.COM



ANMAR ATCHU
VP OF MARKETING & LEASING
269.488.3642
ANMARA@HINMANCOMPANY.COM

OFFICE SPACE FOR LEASE

1001 28TH STREET

1001 28TH STREET SW | WYOMING, MI 49509

2ND FLOOR | 63,263 SF



LEASING // HINMANCOMPANY.COM



KIRK DRISENGA
REGIONAL DIRECTOR OF LEASING
616.301.2731
KIRKD@HINMANCOMPANY.COM



ANMAR ATCHU
VP OF MARKETING & LEASING
269.488.3642
ANMARA@HINMANCOMPANY.COM

OFFICE SPACE FOR LEASE

1001 28TH STREET

1001 28TH STREET SW | WYOMING, MI 49509

2ND FLOOR | 63,263 SF



LEASING //

HINMANCOMPANY.COM



KIRK DRISENGA
REGIONAL DIRECTOR OF LEASING
616.301.2731
KIRKD@HINMANCOMPANY.COM



ANMAR ATCHU
VP OF MARKETING & LEASING
269.488.3642
ANMARA@HINMANCOMPANY.COM

OFFICE SPACE FOR LEASE

1001 28TH STREET

1001 28TH STREET SW | WYOMING, MI 49509

2ND FLOOR | 63,263 SF



LEASING //

HINMANCOMPANY.COM



KIRK DRIESENKA
REGIONAL DIRECTOR OF LEASING
616.301.2731
KIRKD@HINMANCOMPANY.COM



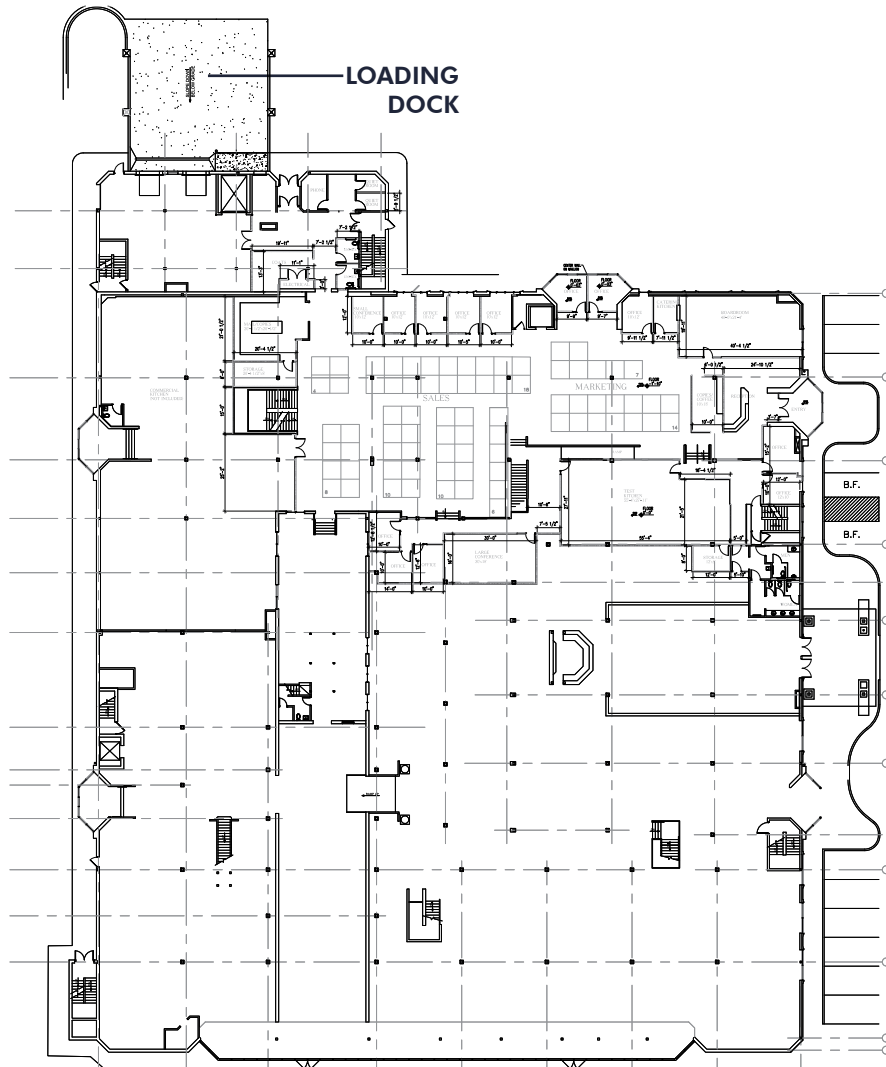
ANMAR ATCHU
VP OF MARKETING & LEASING
269.488.3642
ANMARA@HINMANCOMPANY.COM

OFFICE SPACE FOR LEASE

1001 28TH STREET

1001 28TH STREET SW | WYOMING, MI 49509

1ST FLOOR | 63,774 SF



LEASING //

HINMANCOMPANY.COM



KIRK DRISENGA
REGIONAL DIRECTOR OF LEASING
616.301.2731
KIRKD@HINMANCOMPANY.COM



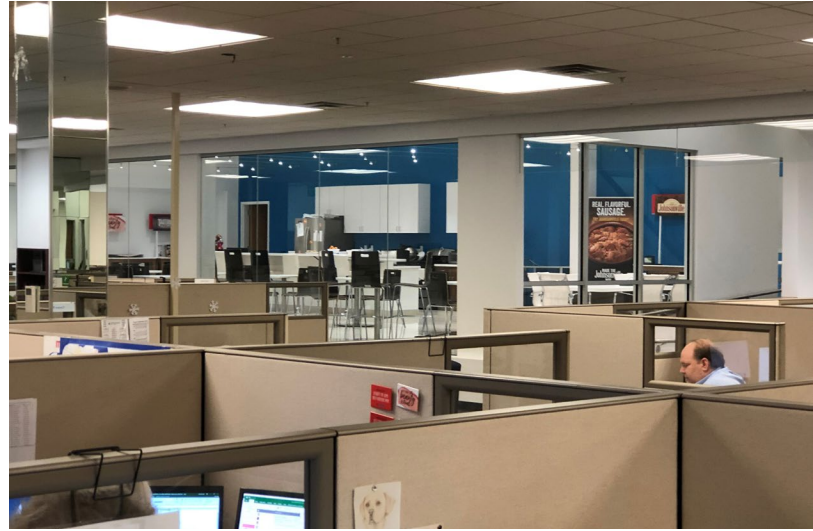
ANMAR ATCHU
VP OF MARKETING & LEASING
269.488.3642
ANMARA@HINMANCOMPANY.COM

OFFICE SPACE FOR LEASE

1001 28TH STREET

1001 28TH STREET SW | WYOMING, MI 49509

1ST FLOOR | 63,774 SF



LEASING // HINMANCOMPANY.COM



KIRK DRISENGA
REGIONAL DIRECTOR OF LEASING
616.301.2731
KIRKD@HINMANCOMPANY.COM



ANMAR ATCHU
VP OF MARKETING & LEASING
269.488.3642
ANMARA@HINMANCOMPANY.COM

OFFICE SPACE FOR LEASE

1001 28TH STREET

1001 28TH STREET SW | WYOMING, MI 49509

1ST FLOOR | 63,774 SF



LEASING //

HINMANCOMPANY.COM



KIRK DRISENGA
REGIONAL DIRECTOR OF LEASING
616.301.2731
KIRKD@HINMANCOMPANY.COM



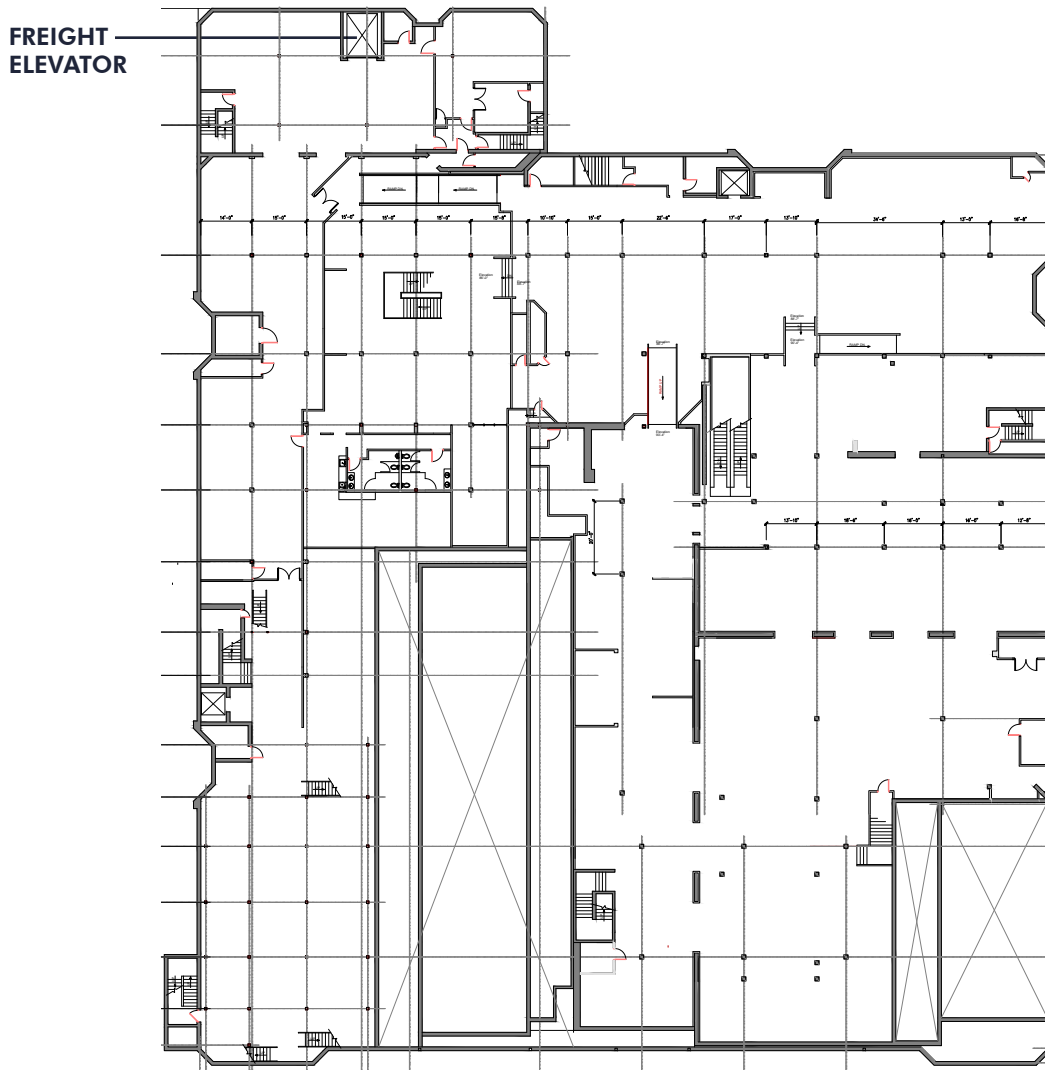
ANMAR ATCHU
VP OF MARKETING & LEASING
269.488.3642
ANMARA@HINMANCOMPANY.COM

OFFICE SPACE FOR LEASE

1001 28TH STREET

1001 28TH STREET SW | WYOMING, MI 49509

LOWER LEVEL | 61,568 SF



LEASING //

HINMANCOMPANY.COM



KIRK DRIESENKA
REGIONAL DIRECTOR OF LEASING
616.301.2731
KIRKD@HINMANCOMPANY.COM



ANMAR ATCHU
VP OF MARKETING & LEASING
269.488.3642
ANMARA@HINMANCOMPANY.COM

OFFICE SPACE FOR LEASE

1001 28TH STREET

1001 28TH STREET SW | WYOMING, MI 49509

LOWER LEVEL | 61,568 SF



LEASING //

HINMANCOMPANY.COM



KIRK DRISENGA
REGIONAL DIRECTOR OF LEASING
616.301.2731
KIRKD@HINMANCOMPANY.COM

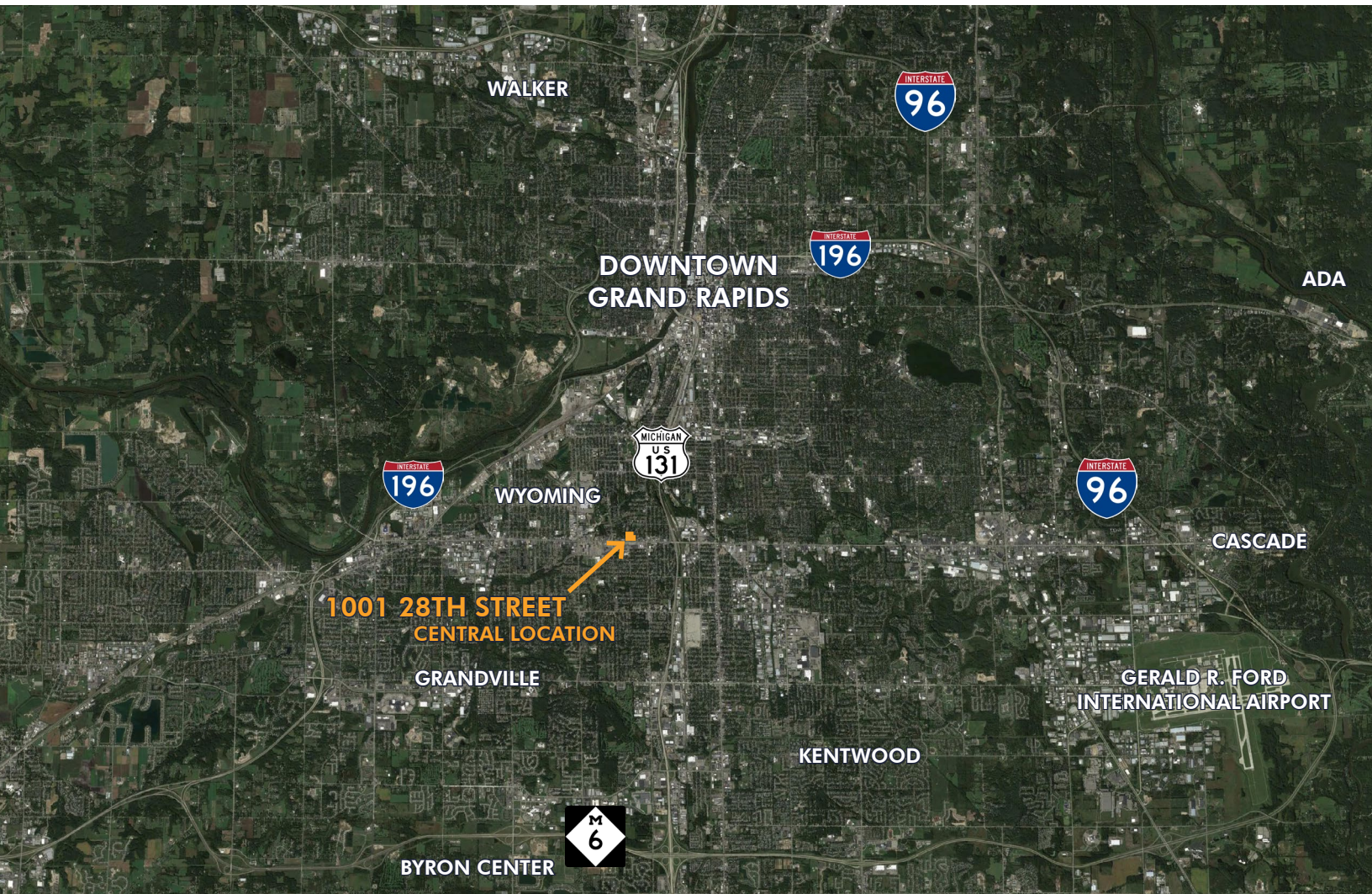


ANMAR ATCHU
VP OF MARKETING & LEASING
269.488.3642
ANMARA@HINMANCOMPANY.COM

LOCATION

1001 28TH STREET

1001 28TH STREET SW | WYOMING, MI 49509



LEASING //

[HINMANCOMPANY.COM](https://hinmancompany.com)



KIRK DRISENGA
REGIONAL DIRECTOR OF LEASING
616.301.2731
KIRKD@HINMANCOMPANY.COM



ANMAR ATCHU
VP OF MARKETING & LEASING
269.488.3642
ANMARA@HINMANCOMPANY.COM

GRAND RAPIDS MARKET OVERVIEW

1001 28TH STREET

1001 28TH STREET SW | WYOMING, MI 49509

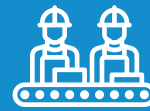
GRAND RAPIDS IS HOME TO ONE OF THE FASTEST GROWING ECONOMIES IN THE UNITED STATES.



REGIONAL
POPULATION OF
1,650,746



MORE THAN 130
INTERNATIONAL
COMPANIES



\$100 BILLION
GROSS REGIONAL
PRODUCT



20 COLLEGES AND
UNIVERSITIES



UNEMPLOYMENT
RATE OF 3.2%



COST OF LIVING
IS 5.3% LOWER
THAN NATIONAL
AVERAGE



HIGHWAY SYSTEM
OFFERS MULTI-
REGIONAL
ACCESSIBILITY



AVERAGE 19
MINUTE TRAVEL
TIME FOR MOST
COMMUTERS



100+ DAILY
FLIGHTS TO 30
MAJOR MARKETS
VIA GRR AIRPORT

RECOGNITIONS

- GRAND RAPIDS IS "ONE OF THE BEST PLACES TO LIVE IN AMERICA" BY **U.S. NEWS & WORLD REPORT**
- THE GRAND RAPIDS - KENTWOOD MSA #1 BEST MANUFACTURING HUBS BY **BUSINESS FACILITIES**
- GRAND RAPIDS IS "ONE OF THE CITIES WITH THE HOTTEST JOB MARKETS" BY **WALL STREET JOURNAL**
- GRAND RAPIDS IS THE NUMBER ONE BEST PLACES TO RAISE A FAMILY IN THE U.S. BY **ROCKET HOMES**
- GRAND RAPIDS IS "ONE OF THE BEST US CITIES FOR NEW COLLEGE GRADS" BY **CHECKR**

LEASING //

[HINMANCOMPANY.COM](https://www.hinmancompany.com)



KIRK DRISENGA
REGIONAL DIRECTOR OF LEASING
616.301.2731
KIRKD@HINMANCOMPANY.COM



ANMAR ATCHU
VP OF MARKETING & LEASING
269.488.3642
ANMARA@HINMANCOMPANY.COM