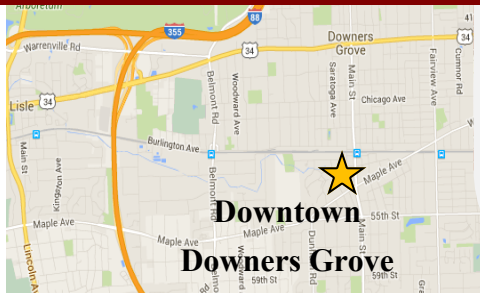


3,954 SF Professional Office Suite For Lease

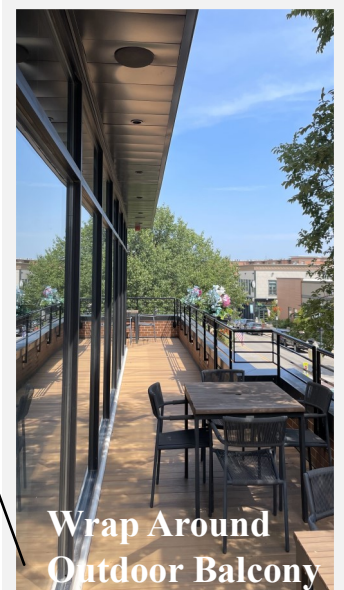
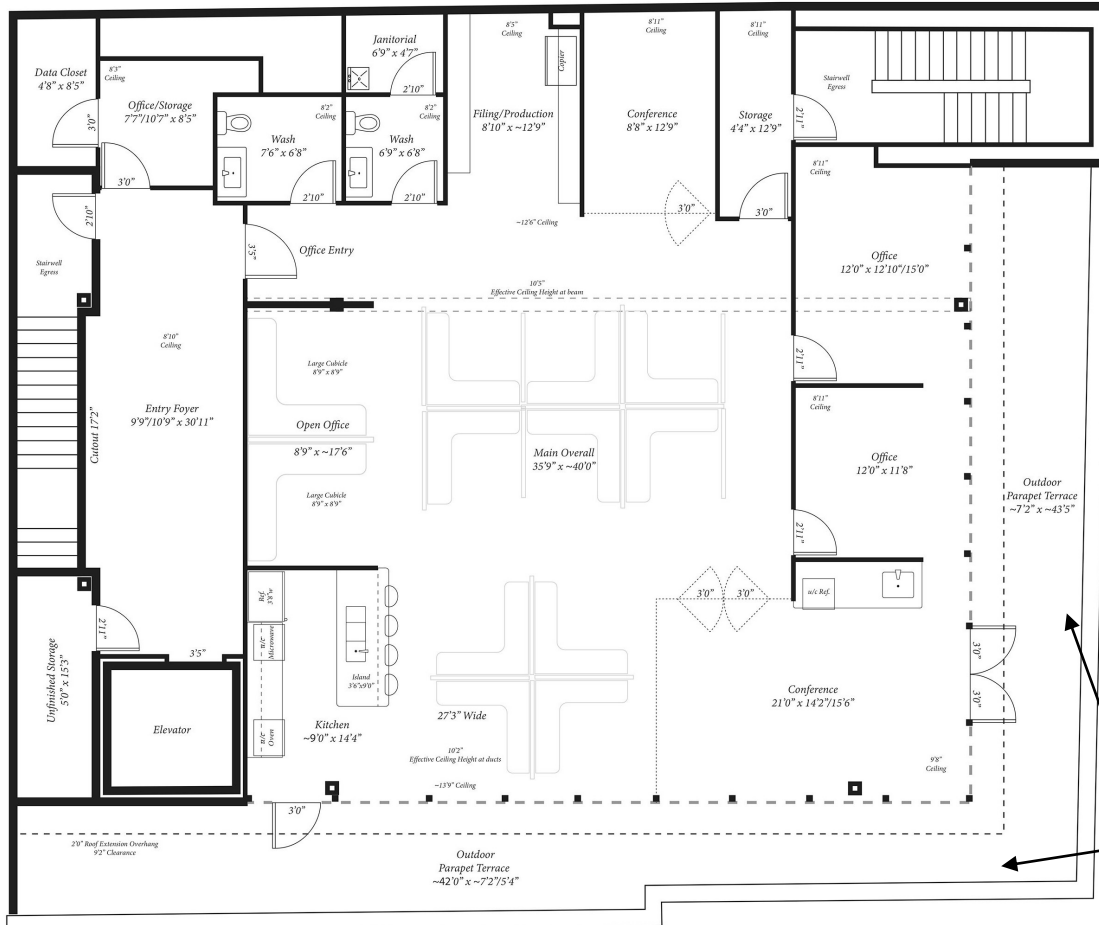


High End Custom Office Suite in DTDG

- ◆ **2nd Floor Suite** with floor to ceiling glass private offices & corner conference room leading to an extended outdoor balcony overlooking downtown Downers Grove.
- ◆ High exposed ceilings, custom open kitchen, built-in furniture systems, 1st and 2nd floor reception lobby entrances with elevator access.
- ◆ 9 On site parking space. One block to municipal parking garage, Metra Train Station, Starbucks, restaurants & shops in Heart of the downtown business district.



3,954 SF Professional Office Building For Lease



**Wrap Around
Outdoor Balcony**



Reception Entrance



Corner Conference Suite

3,954 SF Professional Office Suite For Lease

Downtown Downers Grove

