

# 617 EASTLAKE

617 EASTLAKE AVE E, SEATTLE, WA 98109



BLUME COMPANY  
REAL ESTATE

FOR LEASE



## OFFICE SPACE AVAILABLE

[LEASING@BLUMECOMPANY.COM](mailto:LEASING@BLUMECOMPANY.COM)

SUITE 110	6,604 SQ FT
SUITE 200	18,024 SQ FT (DIVISIBLE)
SUITE 320	3,473 SQ FT
SUITE 330	3,216 SQ FT
SUITE 410	6,797 SQ FT
SUITE 500	14,327 SQ FT

PRIME LOCATION OVERLOOKING LAKE UNION, NEXT TO FRED HUTCH CANCER CENTER. STEPS FROM BRIGHT HORIZONS CHILDCARE (SLU), THE UPS STORE, REI, NOODLE/BAR, CAFFE TORINO, FLAIR TACO TAQUERIA, I LOVE SUSHI, KATI VEGAN THAI, CAFE HAGEN, EL GRITO, BENTOFUL, LASSI & SPICE, DUKE'S SEAFOOD, BLEUWICHES, BAR HARBOR, AND VITALITY BOWLS.

- ✓ SWEEPING LAKE UNION VIEWS
- ✓ BIKE STORAGE
- ✓ SHOWER FACILITIES
- ✓ AMPLE ONSITE PARKING
- ✓ CLOSE PROXIMITY TO MULTIPLE I-5 ON RAMPS



SUITE 200

CLIENT:

617  
EASTLAKE

DRAWING TITLE:

617  
EASTLAKE

PROJECT #

DATE:

DESIGNED BY:

DRAWN BY:

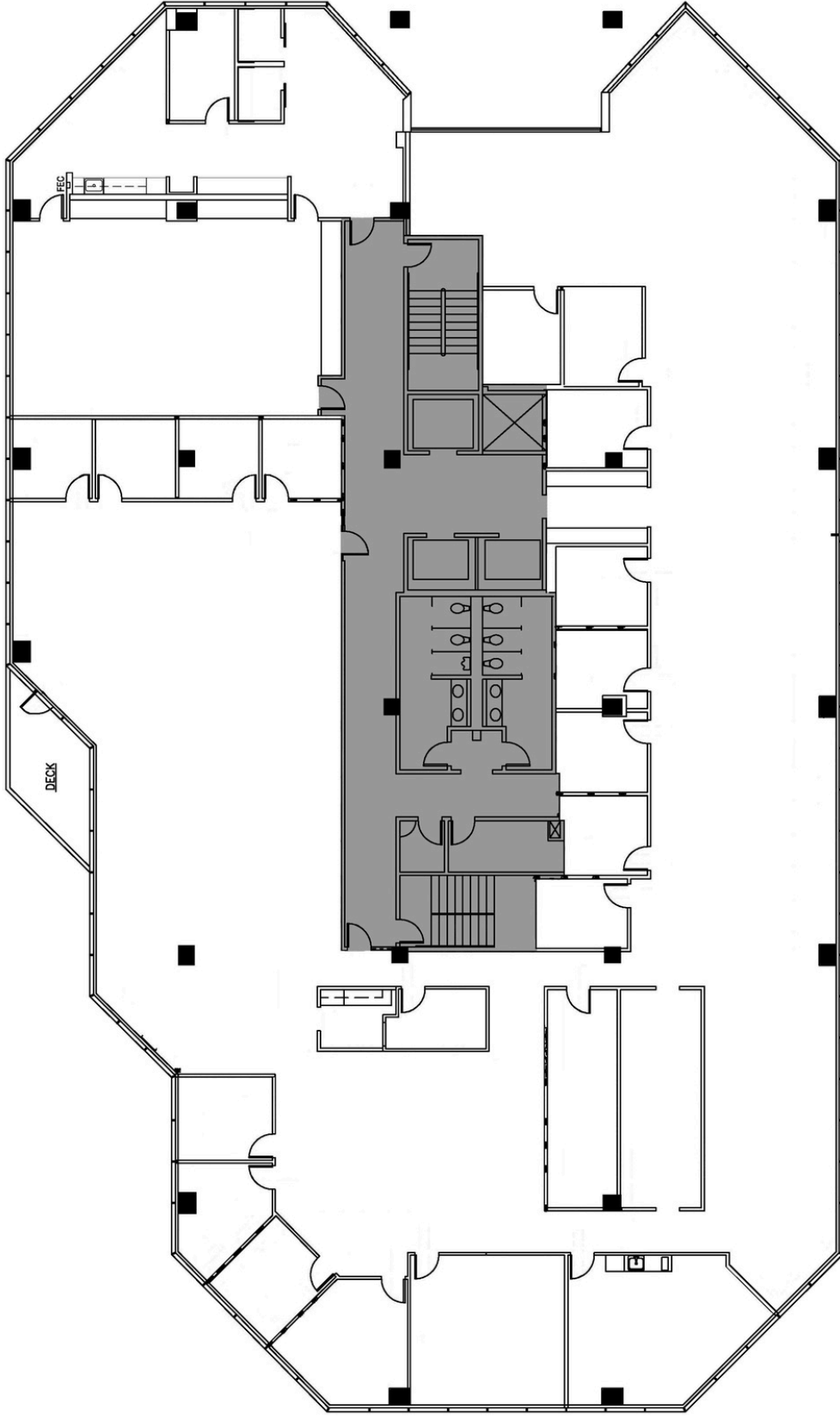
CHECKED BY:

SCALE: NTS

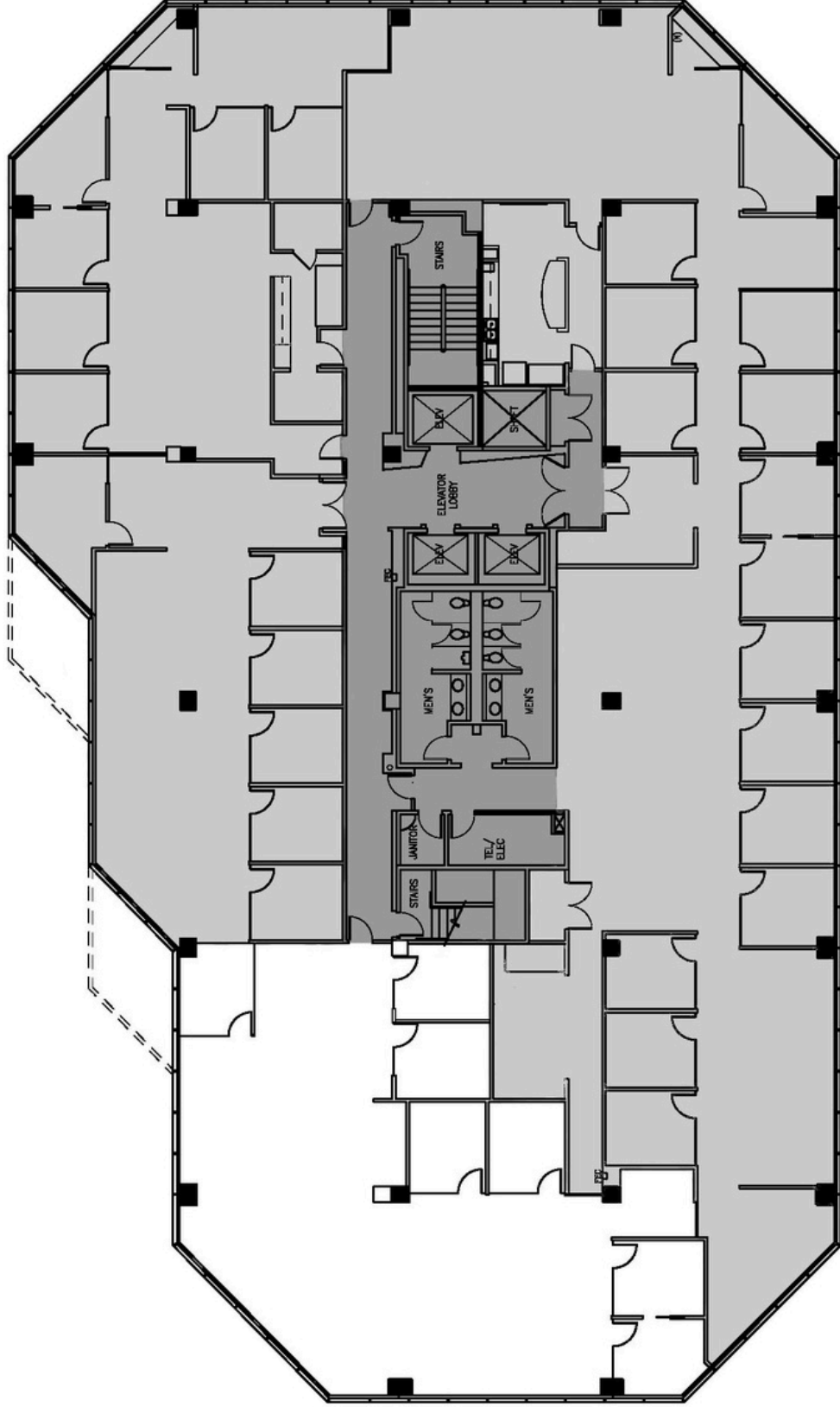
DRAWING:

REVISIONS:

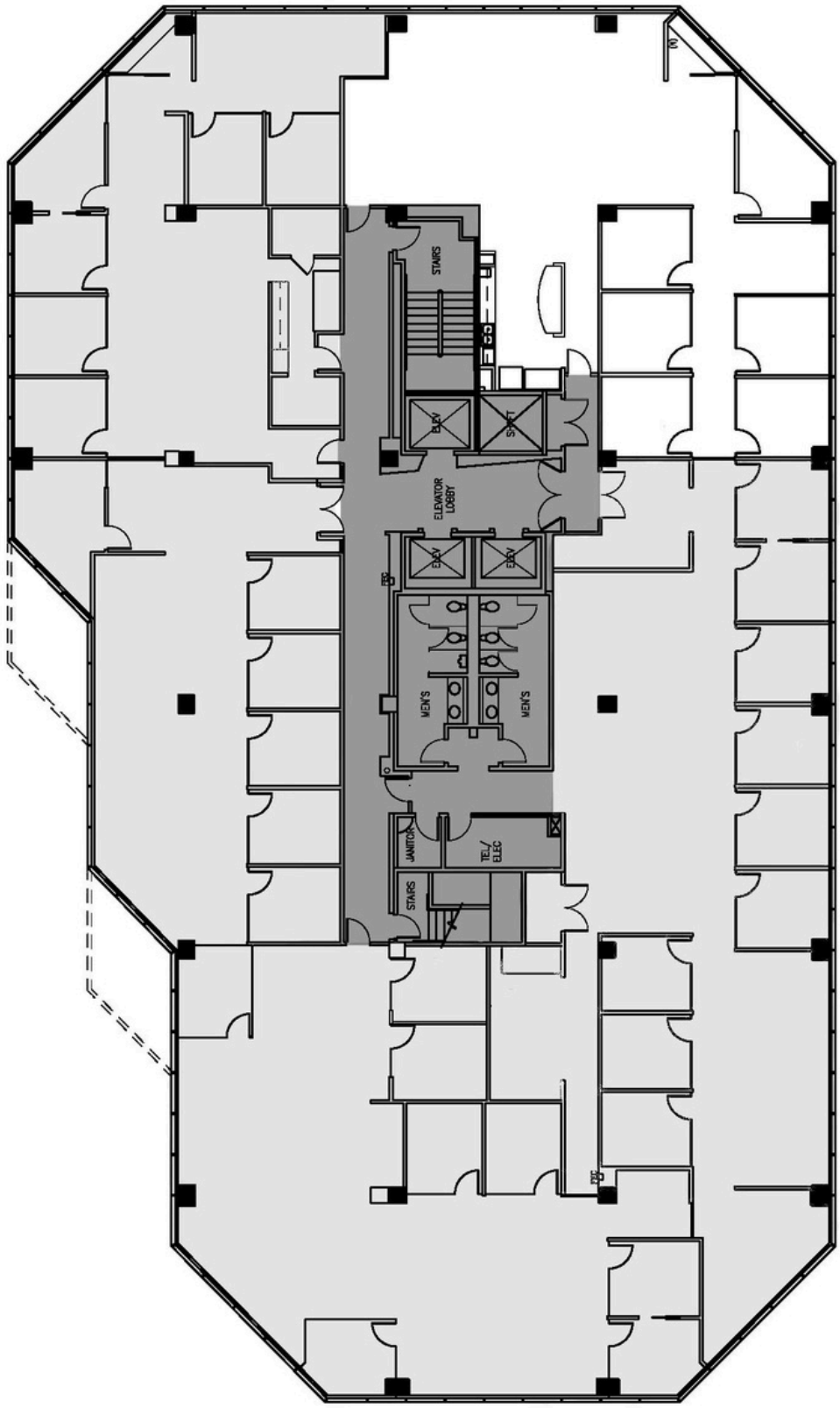
SHEET #:



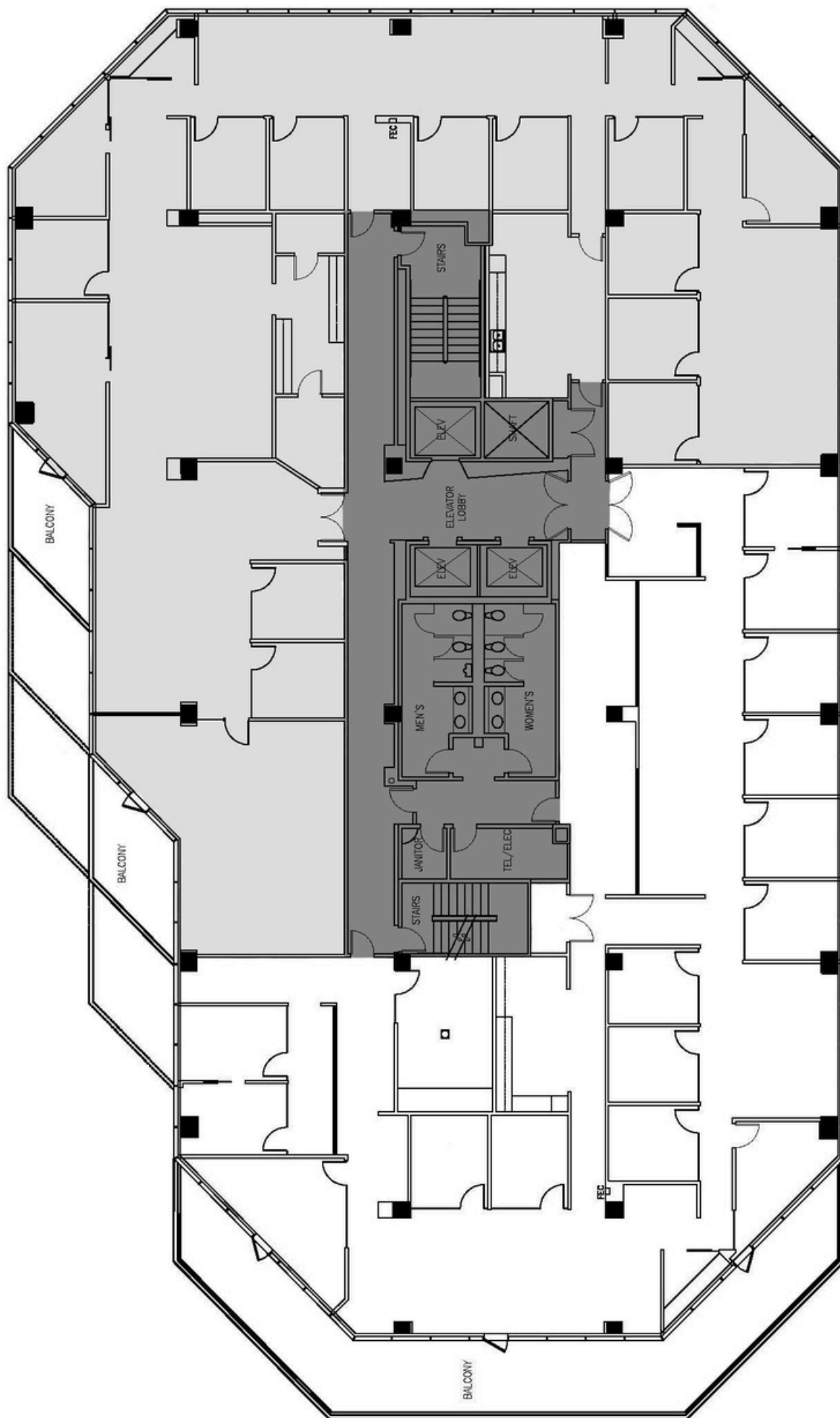
SUITE 320



SUITE 330



SUITE 410



Tenant:  
617 EASTLAKE AVE E. SUITE 500  
SEATTLE, WA 98109

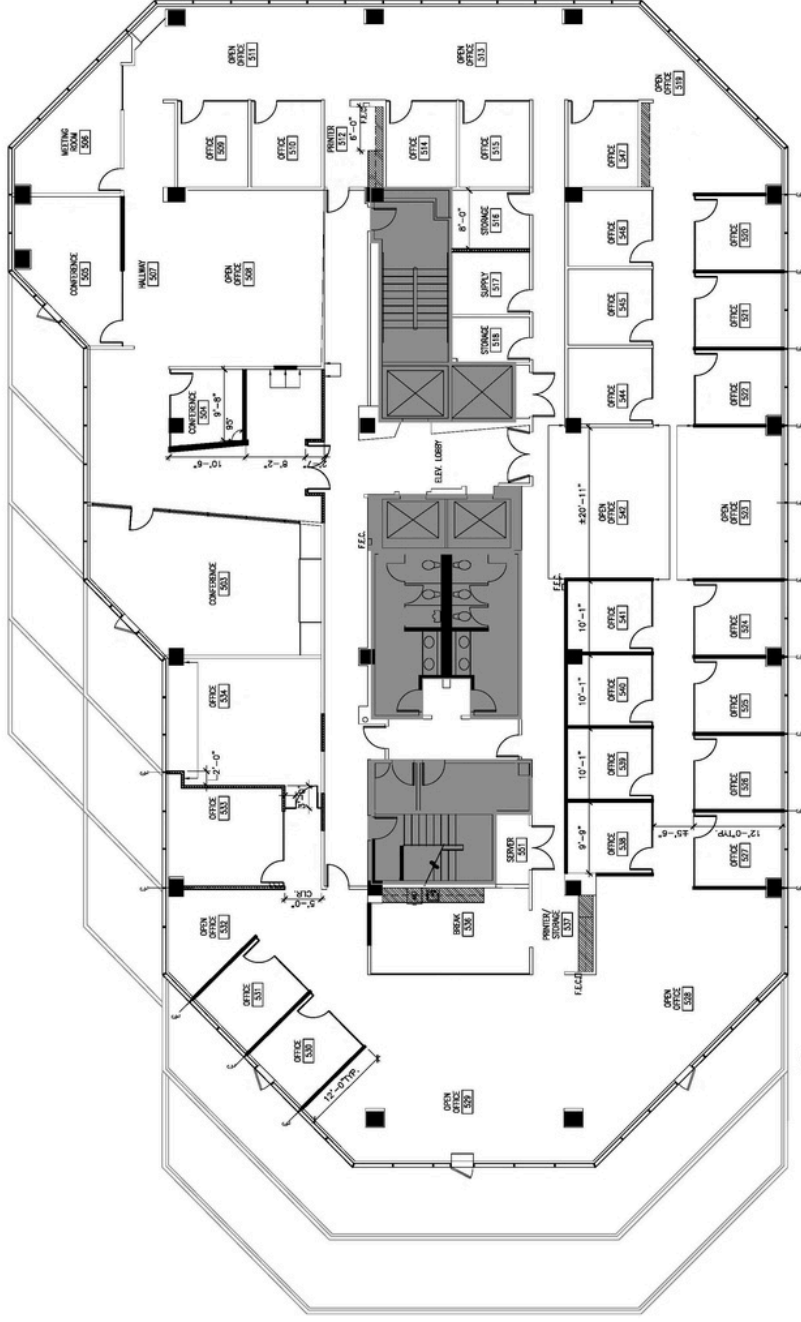
**SUITE 500**

A Tenant Improvement for:  
**BLUME COMPANY**  
617 EASTLAKE AVE E. SUITE 500  
SEATTLE, WA 98109



business design interiors architecture  
A1 Architecture & Interiors, LLC  
1000 1st Avenue, Suite 2000, Seattle, WA 98101

Professional seal



**(A) CONSTRUCTION PLAN**  
1/8" = 1'-0"  
0 8' 16' 24'

SYMBOL LEGEND	
	EXISTING CONSTRUCTION TO REMAIN
	NEW INSULATED INTERIOR PARTITION CONSTRUCTION, PER DETAIL A/A1.1
	NEW FULL HEIGHT INSULATED PARTITION TO STRUCTURE, PER DETAIL A/A1.1
	NEW 1-HR RATED PARTITION CONSTRUCTION TO UNDERLIE OF STRUCTURE, PER DETAIL A/A1.1
	FULL HEIGHT CURTAIN WALL
	NEW GLAZING / GLASS PANELS
	FIRE RATED GLASS PANELS
	FRAMING SUPPORTING FIRE SUPPRESSED CABINET

GENERAL CONSTRUCTION NOTES	

KEYED SHEET NOTES	

No.	Issue Description	Date

Drawn By: \_\_\_\_\_  
Project Manager

Checked By: \_\_\_\_\_  
Project No. \_\_\_\_\_

**CONSTRUCTION PLAN**

Original sheets in 24" x 36" size, unless otherwise noted.  
**A.2A.1**