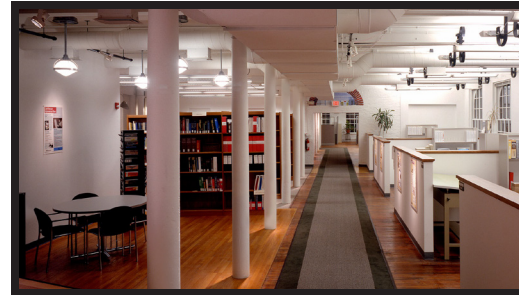
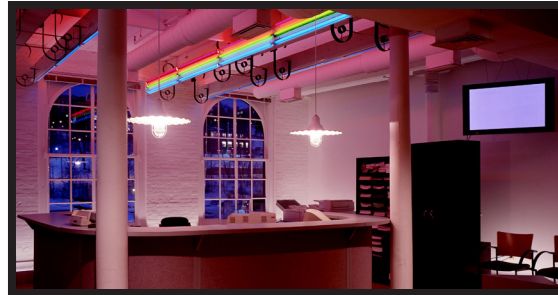


THE LANDMARK  
**Gurley**  
BUILDING  
514 FULTON AVE | TROY



**FOR LEASE** 514 Fulton Street | Troy, NY Suite 300 - 12,676± RSF SUBDIVIDABLE



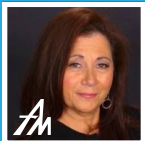
## ABOUT SUITE 300

Welcome to the National Historic Landmark, known as the Gurley Building in Historic Downtown Troy with 12,676± RSF. Boasting an open floor plan loft space with 15+ rooms, a conference room, high exposed ceilings and gracefully arched grand windows, overlooking RPI and a private interior atrium courtyard. This space is designed to appeal to creative thinkers!

**Contact us to schedule an appointment today!**

## NOTABLE FEATURES

- Walking distance to restaurants, retail shops, and local amenities.
- Minutes to RPI and Russell Sage.
- Immediate ample parking.
- Easy access to Albany, Saratoga, and Vermont.
- Competitive rates and negotiable lease terms.



**Joan Purtell**, NYS Corporate RE Broker  
518.400.5251  
jpurtell@AlbanyManagement.com

**ALBANY**  
MANAGEMENT

View all of our Capital Region Properties at [AlbanyManagement.com](http://AlbanyManagement.com)