

14201 HARPER AVENUE
DETROIT, MICHIGAN

RETAIL FOR SALE
4,617 Square Feet Available



**SIGNATURE
ASSOCIATES**
KNOW SIGNATURE | KNOW RESULTS



PROPERTY FEATURES

- 4,617 square feet available
- Turn-key liquor store
- License included with sale
- Sale Price: \$680,000 (\$147.28/sq. ft.)



For more information, please contact:

JOE STACK
(248) 359 0615
jstack@signatureassociates.com

CHRIS MONSOUR
(248) 948 0107
cmonsour@signatureassociates.com

SIGNATURE ASSOCIATES
One Towne Square, Suite 1200
Southfield, MI 48076
www.signatureassociates.com

14201 Harper Avenue – Detroit, Michigan

Retail For Sale

4,617
Square Feet
AVAILABLE

Interior Photos



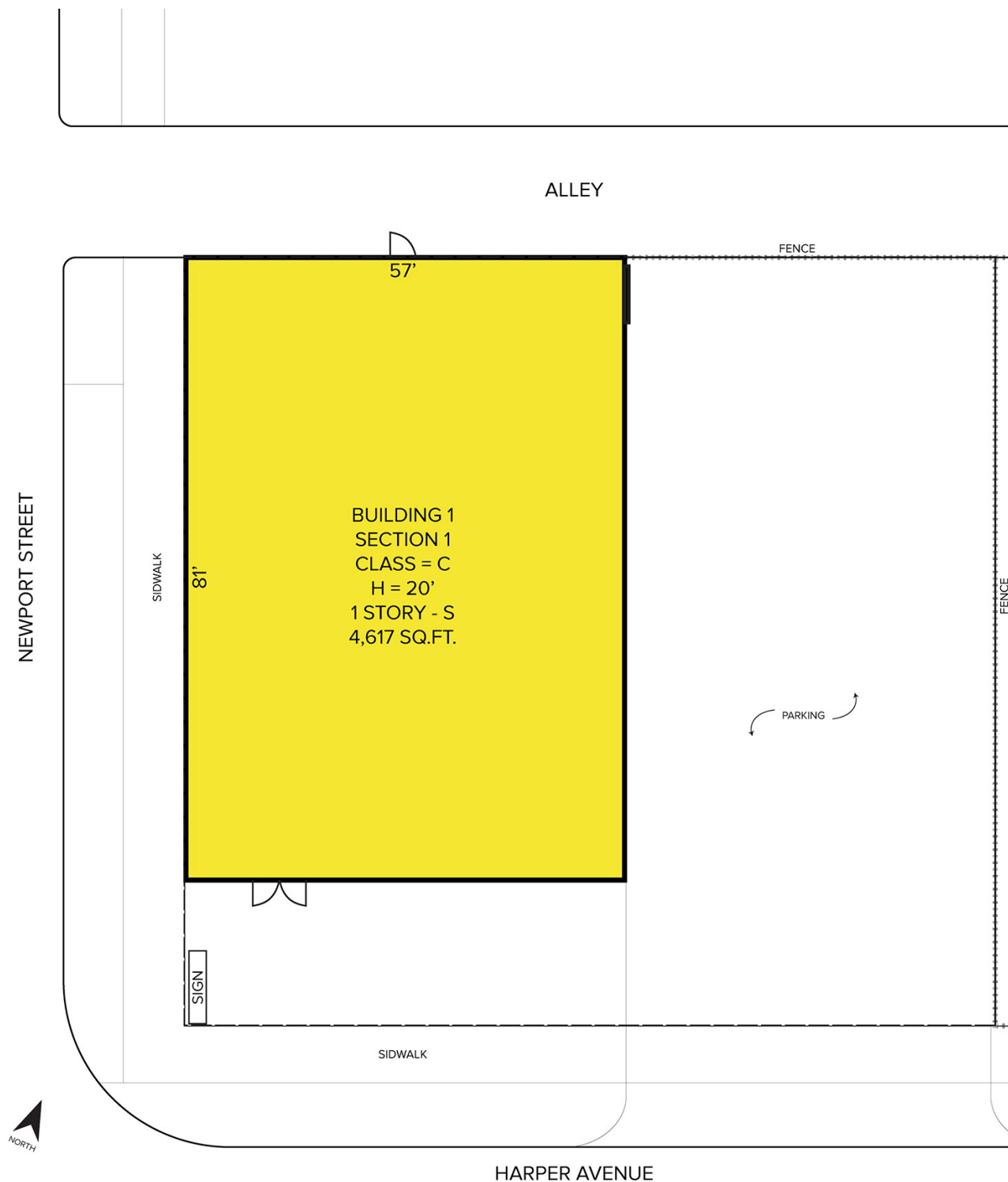
For more information, please contact:

JOE STACK
(248) 359 0615
jstack@signatureassociates.com

CHRIS MONSOUR
(248) 948 0107
cmonsour@signatureassociates.com

SIGNATURE ASSOCIATES
One Towne Square, Suite 1200
Southfield, MI 48076
www.signatureassociates.com

Site Plan



For more information, please contact:

JOE STACK
(248) 359 0615
jstack@signatureassociates.com

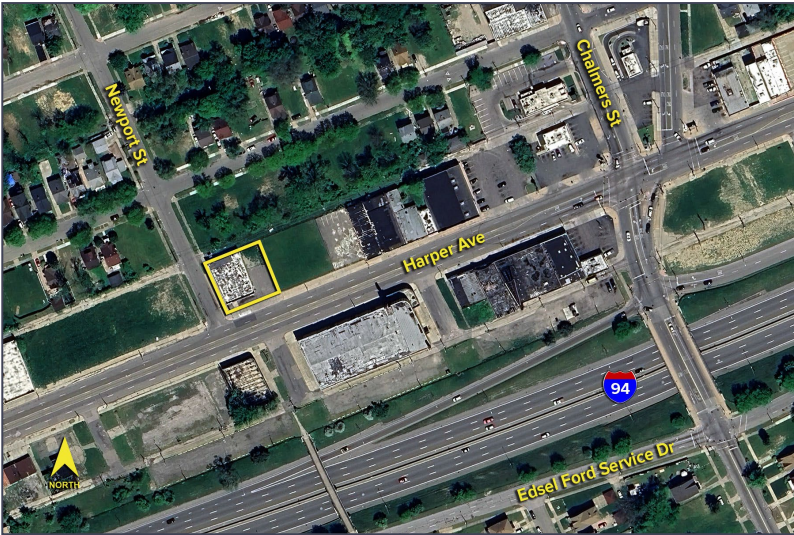
CHRIS MONSOUR
(248) 948 0107
cmonsour@signatureassociates.com

SIGNATURE ASSOCIATES
One Towne Square, Suite 1200
Southfield, MI 48076
www.signatureassociates.com

14201 Harper Avenue – Detroit, Michigan

Retail For Sale

4,617
Square Feet
AVAILABLE

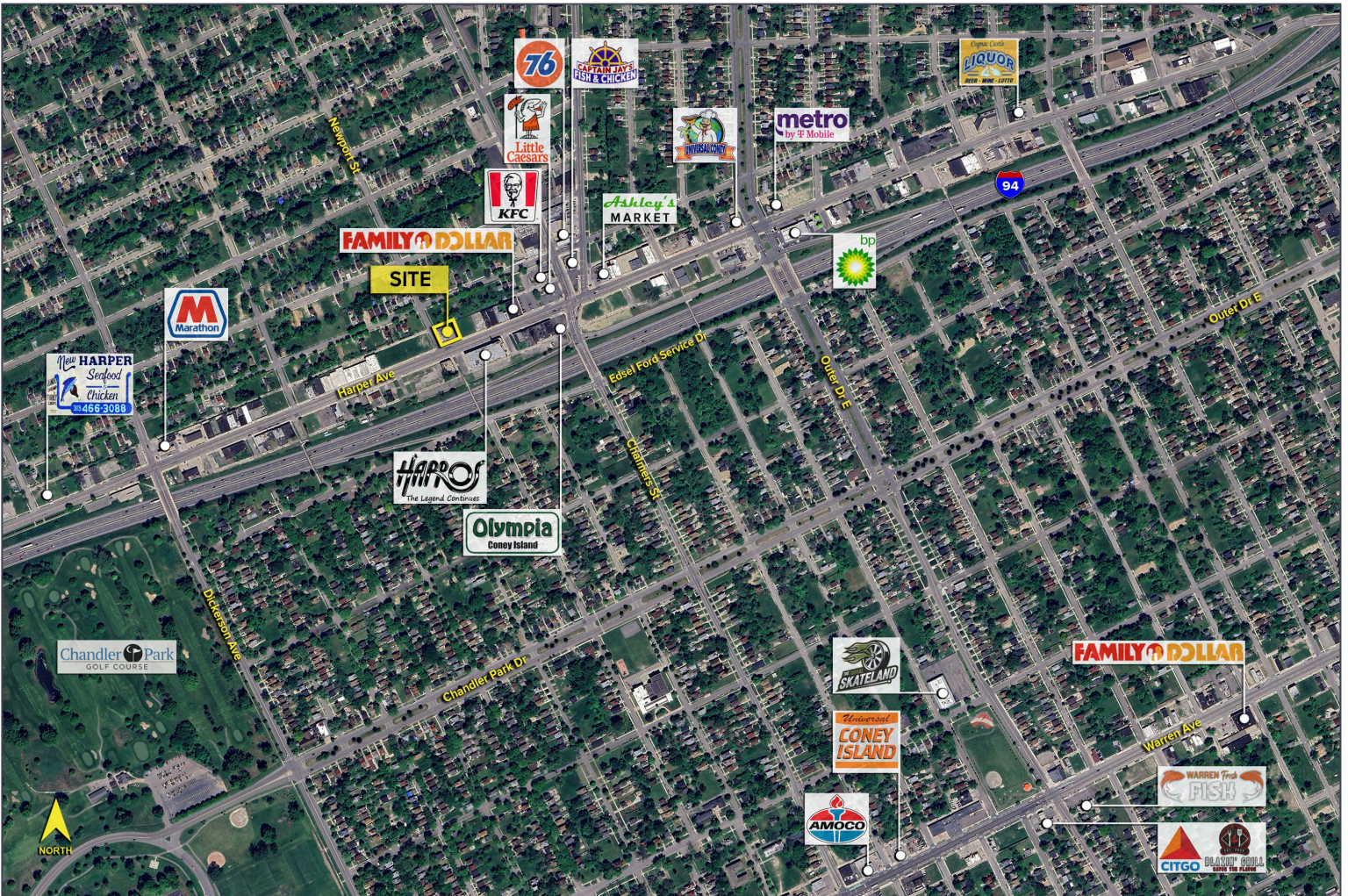


DEMOGRAPHICS

	POPULATION	MED. HH INCOME
1 MILE	16,359	\$38,442
3 MILE	133,951	\$54,414
5 MILE	309,133	\$62,014

TRAFFIC COUNTS (TWO-WAY)

4,490	Harper Ave. SW of Chalmers St.
4,476	Harper Ave. NE of Chalmers St.
5,392	Chalmers St. & Harper Ave.
119,315	I-94 & Chalmers St.



For more information, please contact:

JOE STACK
(248) 359 0615
jstack@signatureassociates.com

CHRIS MONSOUR
(248) 948 0107
cmonsour@signatureassociates.com

SIGNATURE ASSOCIATES
One Towne Square, Suite 1200
Southfield, MI 48076
www.signatureassociates.com