

# FOR LEASE-13825 "P" STREET 13825 "P" STREET, OMAHA, NE 68137

OFFICE/RETAIL | 1,100 - 2,228 SF | \$12.00 SF/YR (NNN)



 **LEE &  
ASSOCIATES**  
COMMERCIAL REAL ESTATE SERVICES

**PRESENTED BY:**  
**Benjamin Pearson**  
402.740.6791  
bpearson@lee-associates.com

**Omaha:** 12020 Shamrock Plaza, Suite 333 | Omaha, NE 68154 | 531.721.2888    **Lincoln:** 200 South 21st Street, Suite A113 | Lincoln, NE 68510 | 531.721.2888



# FOR LEASE

13825 "P" STREET, OMAHA, NE 68137

Office/Retail | 1,100 - 2,228 SF | \$12.00 SF/yr (NNN)



## PROPERTY DESCRIPTION

This office/retail space can be two separate offices or suitable for a single user. It offers users an office build out throughout and ample parking. This property would be a great fit for either office or retail user.

## PROPERTY HIGHLIGHTS

- Located in the heart of Millard
- Many amenities nearby
- Perfect for a variety of users

## LOCATION DESCRIPTION

Located in the heart of downtown Millard with a lot of surrounding amenities.

## OFFERING SUMMARY

<b>Lease Rate:</b>	\$12.00 SF/yr (NNN)
<b>Available SF:</b>	1,100 - 2,228 SF
<b>Lot Size:</b>	0.22 Acres
<b>Building Size:</b>	2,228 SF

## CONTACT

**Benjamin Pearson**

bpearson@lee-associates.com

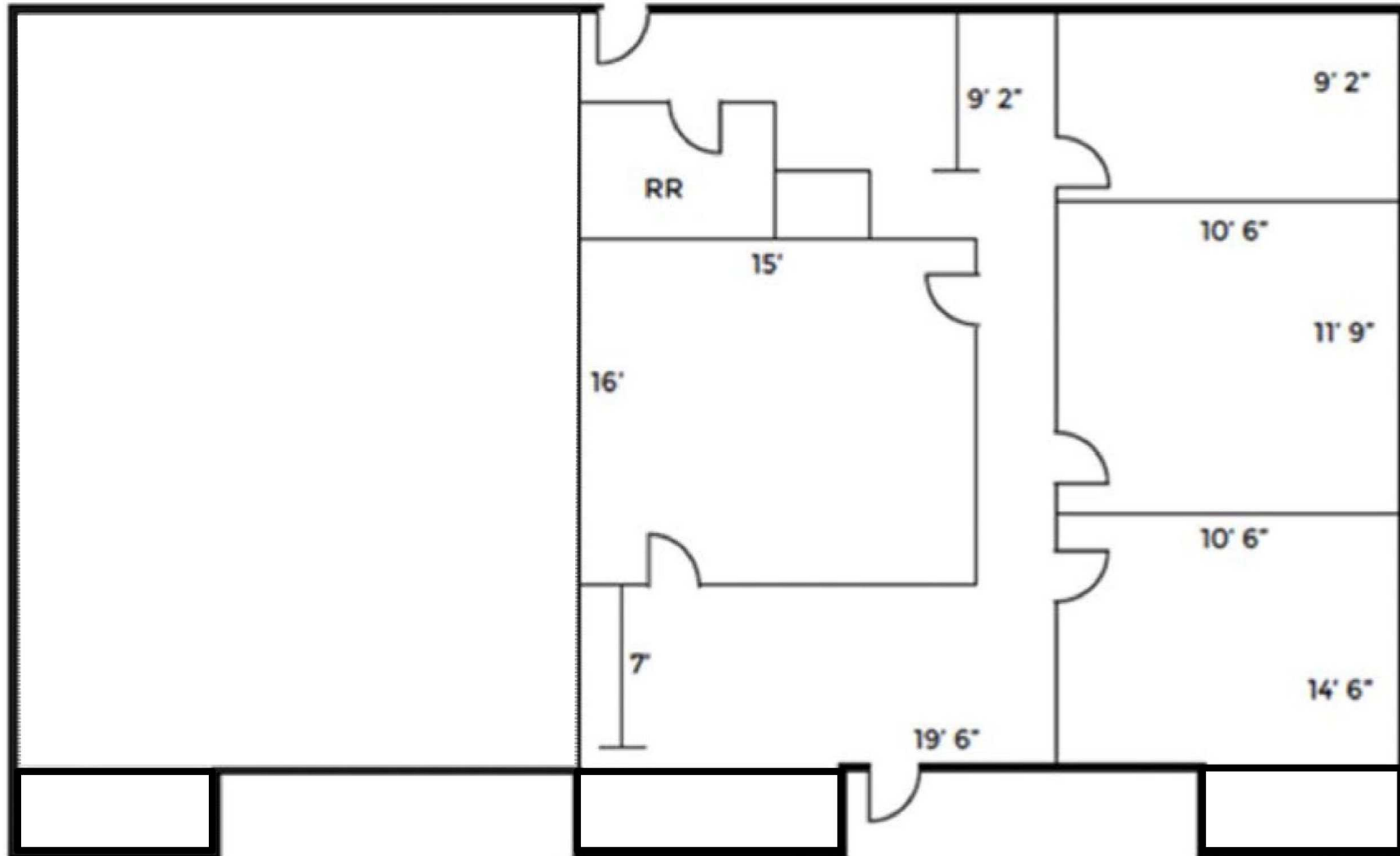
C 402.740.6791

We obtained the information above from sources we believe to be reliable. However, we have not verified its accuracy and make no guarantee, warranty or representation about it. It is submitted subject to the possibility of errors, omissions, change of price, rental or other conditions, prior sale, lease or financing, or withdrawal without notice. We include projections, opinions, assumptions or estimates for example only, and they may not represent current or future performance of the property. You and your tax and legal advisors should conduct your own investigation of the property and transaction.

# FOR LEASE

13825 "P" STREET, OMAHA, NE 68137

Office/Retail | 1,100 - 2,228 SF | \$12.00 SF/yr (NNN)



## CONTACT

**Benjamin Pearson**

bpearson@lee-associates.com

C 402.740.6791

We obtained the information above from sources we believe to be reliable. However, we have not verified its accuracy and make no guarantee, warranty or representation about it. It is submitted subject to the possibility of errors, omissions, change of price, rental or other conditions, prior sale, lease or financing, or withdrawal without notice. We include projections, opinions, assumptions or estimates for example only, and they may not represent current or future performance of the property. You and your tax and legal advisors should conduct your own investigation of the property and transaction.

# FOR LEASE

13825 "P" STREET, OMAHA, NE 68137

Office/Retail | 1,100 - 2,228 SF | \$12.00 SF/yr (NNN)

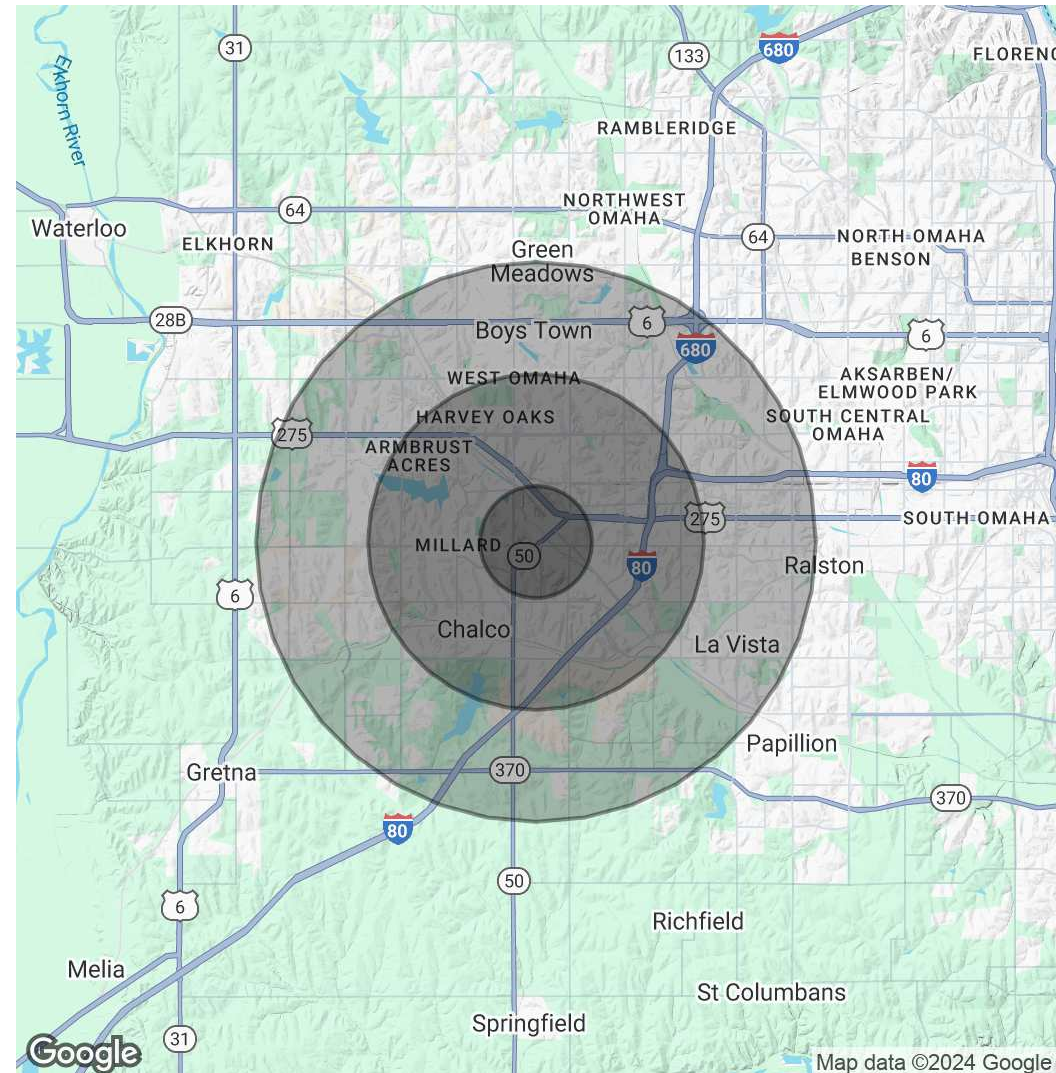


COMMERCIAL REAL ESTATE SERVICES

POPULATION	1 MILE	3 MILES	5 MILES
Total Population	10,422	83,970	190,660
Average Age	35.9	36.4	36.4
Average Age (Male)	35.3	34.8	35.0
Average Age (Female)	36.5	37.6	37.7

HOUSEHOLDS & INCOME	1 MILE	3 MILES	5 MILES
Total Households	4,104	32,929	73,363
# of Persons per HH	2.5	2.6	2.6
Average HH Income	\$66,170	\$78,577	\$90,845
Average House Value	\$159,912	\$167,284	\$197,383

\* Demographic data derived from 2020 ACS - US Census



## CONTACT

**Benjamin Pearson**

bpearson@lee-associates.com

C 402.740.6791

We obtained the information above from sources we believe to be reliable. However, we have not verified its accuracy and make no guarantee, warranty or representation about it. It is submitted subject to the possibility of errors, omissions, change of price, rental or other conditions, prior sale, lease or financing, or withdrawal without notice. We include projections, opinions, assumptions or estimates for example only, and they may not represent current or future performance of the property. You and your tax and legal advisors should conduct your own investigation of the property and transaction.

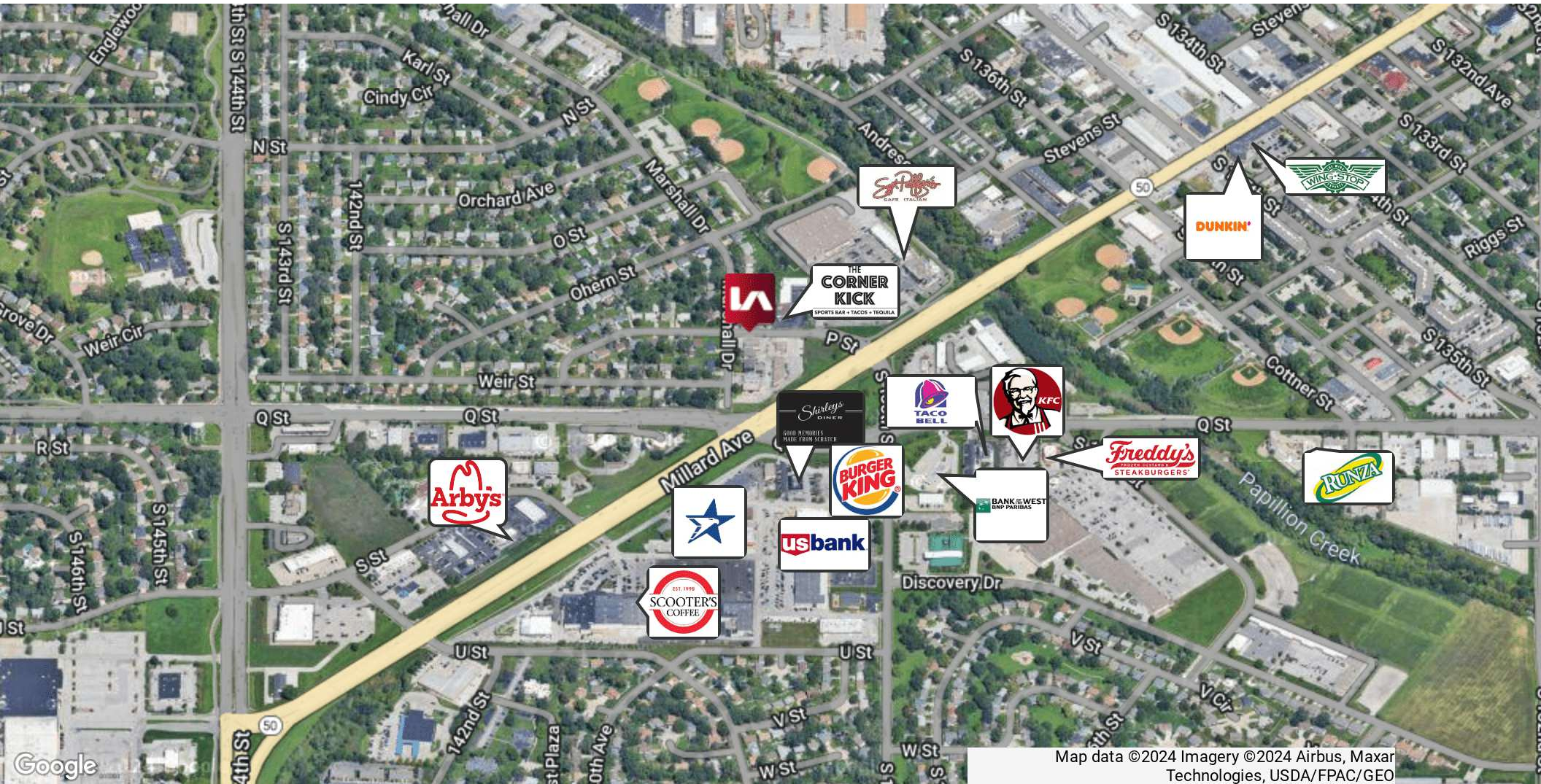
**FOR LEASE**

**13825 "P" STREET, OMAHA, NE 68137**

**Office/Retail | 1,100 - 2,228 SF | \$12.00 SF/yr (NNN)**



COMMERCIAL REAL ESTATE SERVICES



Map data ©2024 Imagery ©2024 Airbus, Maxar Technologies, USDA/FPAC/GEO

**CONTACT**

**Benjamin Pearson**

bpearson@lee-associates.com

C 402.740.6791

We obtained the information above from sources we believe to be reliable. However, we have not verified its accuracy and make no guarantee, warranty or representation about it. It is submitted subject to the possibility of errors, omissions, change of price, rental or other conditions, prior sale, lease or financing, or withdrawal without notice. We include projections, opinions, assumptions or estimates for example only, and they may not represent current or future performance of the property. You and your tax and legal advisors should conduct your own investigation of the property and transaction.

**Omaha:** 12020 Shamrock Plaza, Suite 333 | Omaha, NE 68154 | 531.721.2888

**Lincoln:** 200 South 21st Street, Suite A113 | Lincoln, NE 68510 | 531.721.2888



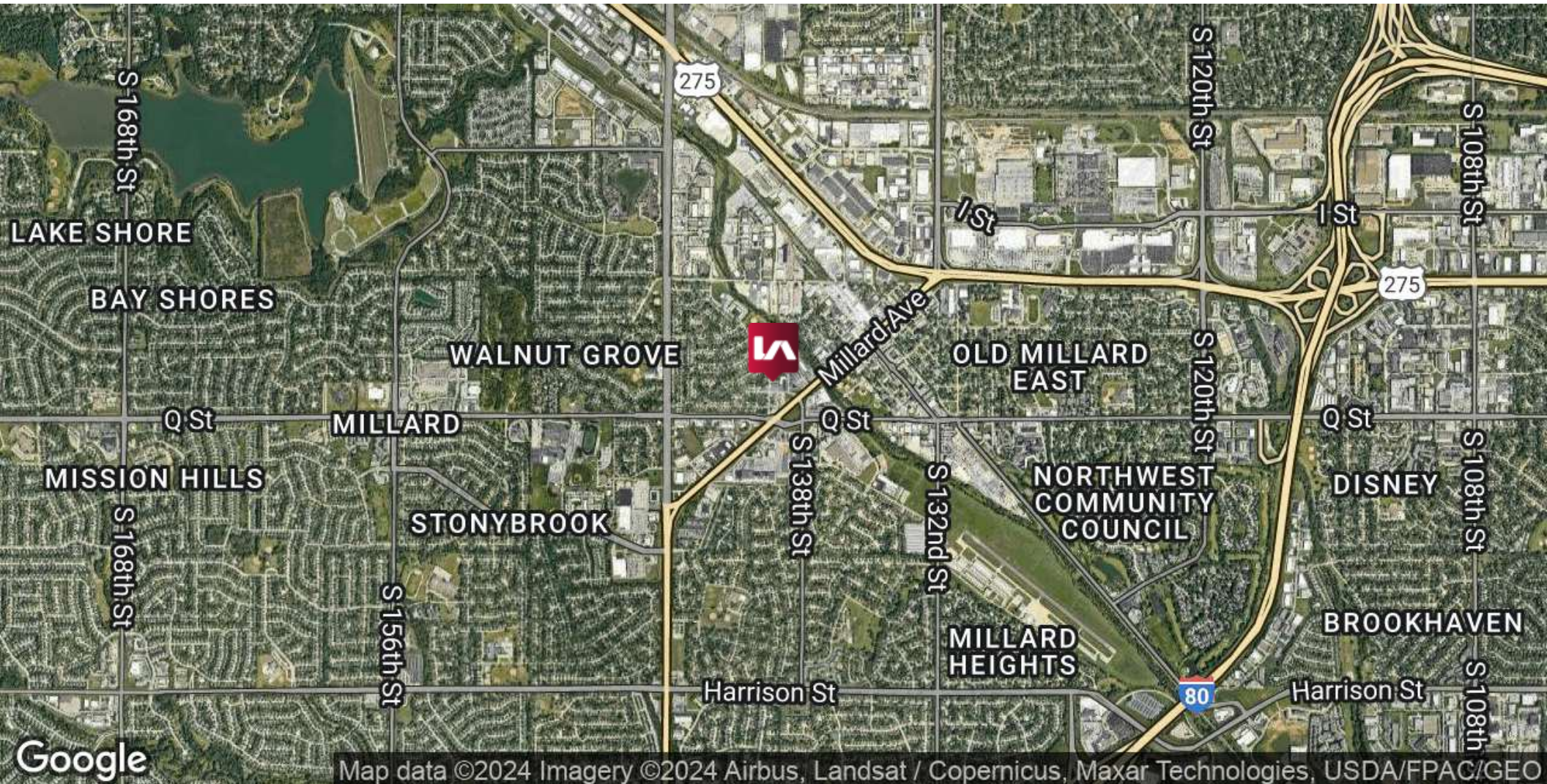
**FOR LEASE**

13825 "P" STREET, OMAHA, NE 68137

Office/Retail | 1,100 - 2,228 SF | \$12.00 SF/yr (NNN)



COMMERCIAL REAL ESTATE SERVICES



**CONTACT**

**Benjamin Pearson**

bpearson@lee-associates.com

C 402.740.6791

We obtained the information above from sources we believe to be reliable. However, we have not verified its accuracy and make no guarantee, warranty or representation about it. It is submitted subject to the possibility of errors, omissions, change of price, rental or other conditions, prior sale, lease or financing, or withdrawal without notice. We include projections, opinions, assumptions or estimates for example only, and they may not represent current or future performance of the property. You and your tax and legal advisors should conduct your own investigation of the property and transaction.

**Omaha:** 12020 Shamrock Plaza, Suite 333 | Omaha, NE 68154 | 531.721.2888

**Lincoln:** 200 South 21st Street, Suite A113 | Lincoln, NE 68510 | 531.721.2888

