

2,160 SF OF NEWLY CONSTRUCTED SPEC OFFICE



# SELWYN WATERFORD



**STREAM**

240,000 SF AVAILABLE / 2 BUILDING CLASS A INDUSTRIAL PARK  
656 RED RIVER ROAD | ROCK HILL, SC

# SELWYN WATERFORD

Selwyn Waterford is a two-building, 240,000 square foot industrial development located in Rock Hill's prestigious Waterford Business Park. Recently delivered by local developer, Selwyn Property Group.

This development provides state-of-the-art industrial spaces at an unbeatable value. These rear-load buildings offer optimal efficiency in a park-like setting—surrounded by respected R&D, technology, and distribution companies. Conveniently situated 5 minutes from I-77, the property's location ensures strong access to Charlotte, Fort Mill, Rock Hill, Waxhaw, and Columbia. Elevate your business's operations with a cost-effective, top-tier facility.





# BUILDING ONE

656 RED RIVER RD

Building Size:	127,525 SF
Column Spacing:	50' x 54'5"
Speed Bay:	60'
Truck Court Depth:	220' to 235'
Building Depth:	260'
Building Length:	490'
Parking Ratio:	1:1,000 SF
Docks:	14 (9'x10') / (12 knock-outs)

Drive-Ins:	2 (12'x14')
Clear Height:	32'
Loading:	Rear Load
Office:	BTS
Lighting:	LED
Electricity:	2,400 Amps
Sprinkler System:	ESFR

# BUILDING TWO

656 RED RIVER RD

Building Size:	112,443 SF
Column Spacing:	50' x 54'
Speed Bay:	60'
Truck Court Depth:	220' to 235'
Building Depth:	260'
Building Length:	432'
Parking Ratio:	1:1,000 SF
Docks:	12 (9'x10') / (10 knock-outs)

Drive-Ins:	2 (12'x14')
Clear Height:	32'
Loading:	Rear Load
Office:	BTS
Lighting:	LED
Electricity:	2,400 Amps
Sprinkler System:	ESFR



BUILDING ONE

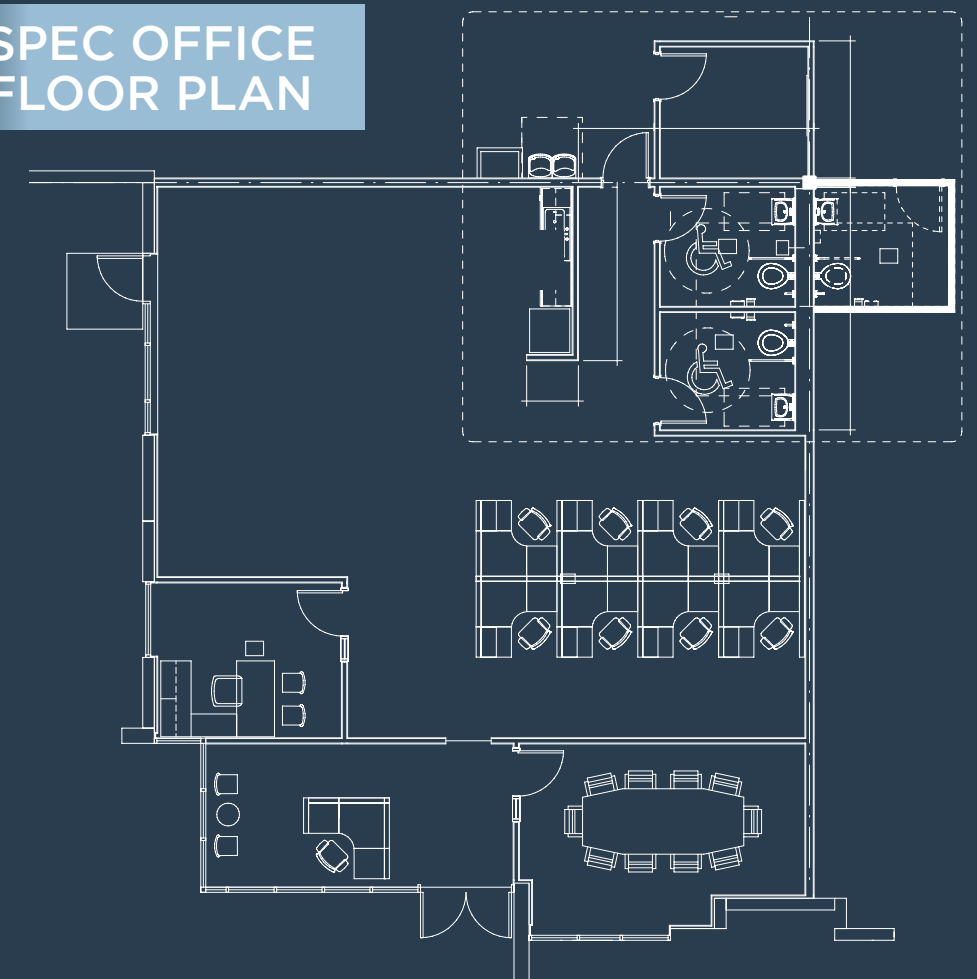
BUILDING TWO



**2,160 SF**  
OF NEWLY  
CONSTRUCTED  
SPEC OFFICE



**SPEC OFFICE  
FLOOR PLAN**





# KEY DISTANCES

## STRATEGIC ACCESS

I-77	2.2 Miles
Downtown Fort Mill	5.8 Miles
I-485	21 Miles
Charlotte Douglas International Airport	25 Miles
Uptown Charlotte	25 Miles





**FOR LEASING INFORMATION,  
PLEASE CONTACT:**

**BRADLEY DUNN**

bradley.dunn@streamrealty.com  
704.777.7003

**JASON SCHNITTGER**

jschnittger@streamrealty.com  
980.819.4277

**STREAM**

