



FOR LEASE

Diamondhead Center

Retail/Office Space Available

807 Williamson Rd | Mooresville, NC

- Located in front of Watermark Shopping Center, anchored by Food Lion
- 1/4 mile from I-77, near Lake Norman Regional Hospital and Lowe's HQ
- One exit north of The Point and Langtree on Lake Norman
- High traffic, strong demographics, excellent visibility, and significant daytime employee population
- Contact broker for lease rates

**FOR MORE INFORMATION,
PLEASE CONTACT:**

 704-532-0028

 jimf@bvbproperties.com

BVBELK
PROPERTIES
REAL ESTATE ACQUISITION / SALES / LEASING

204-C West Woodlawn Rd,
Charlotte, NC 28217

P: 704-532-0028

F: 704-532-4301

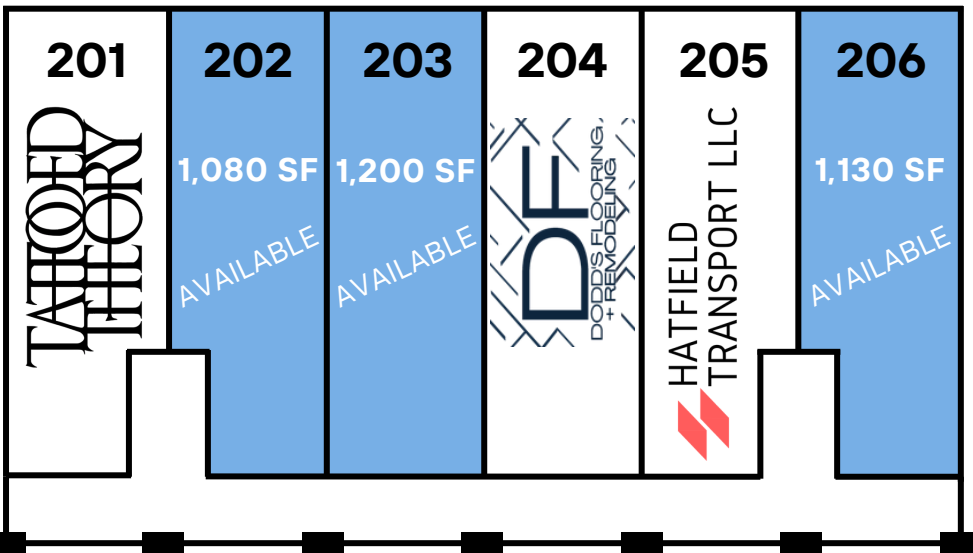
bvbproperties.com

Diamondhead

807 Williamson Rd | Mooresville, NC



Lower Floor Plan



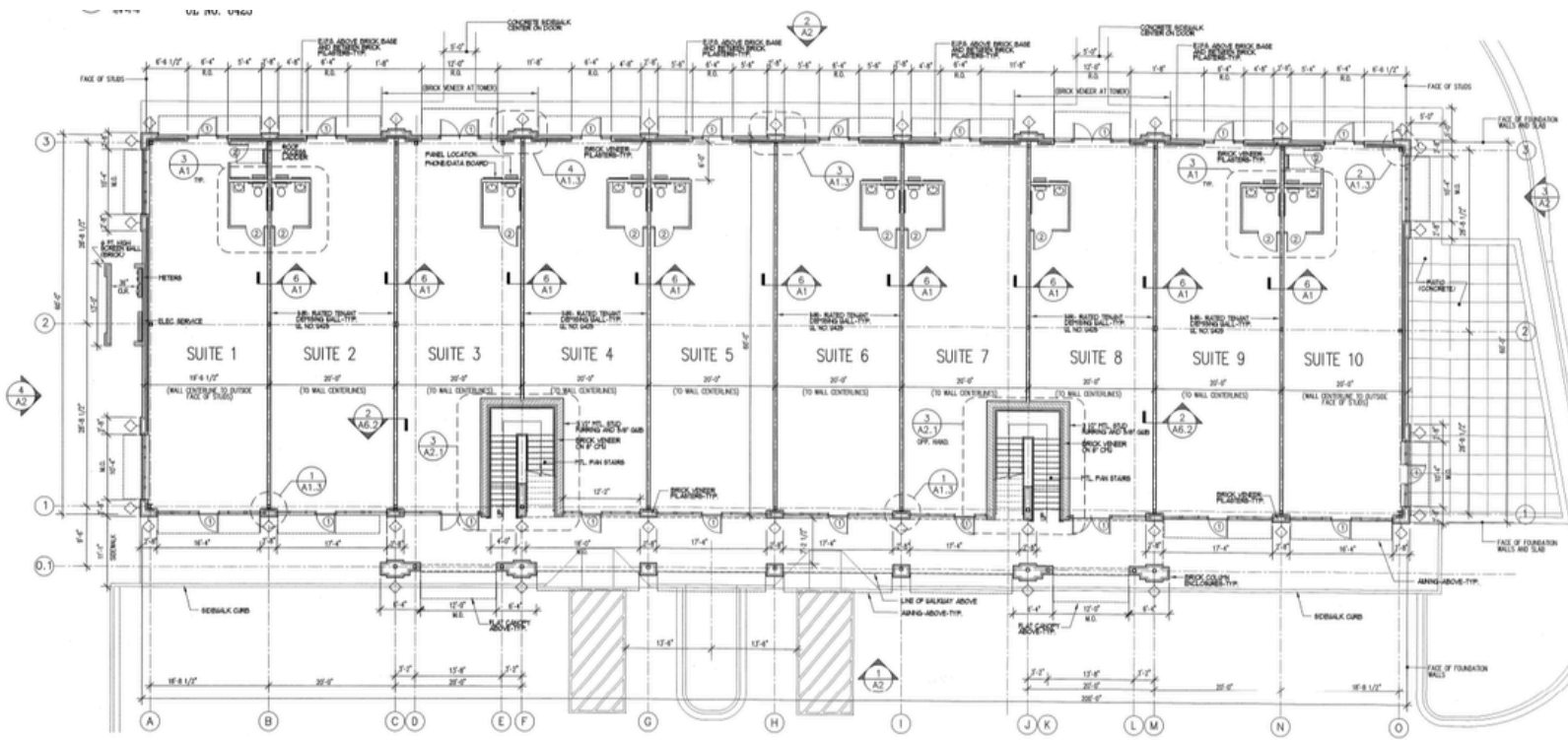
Upper Floor Plan

AVAILABILITY

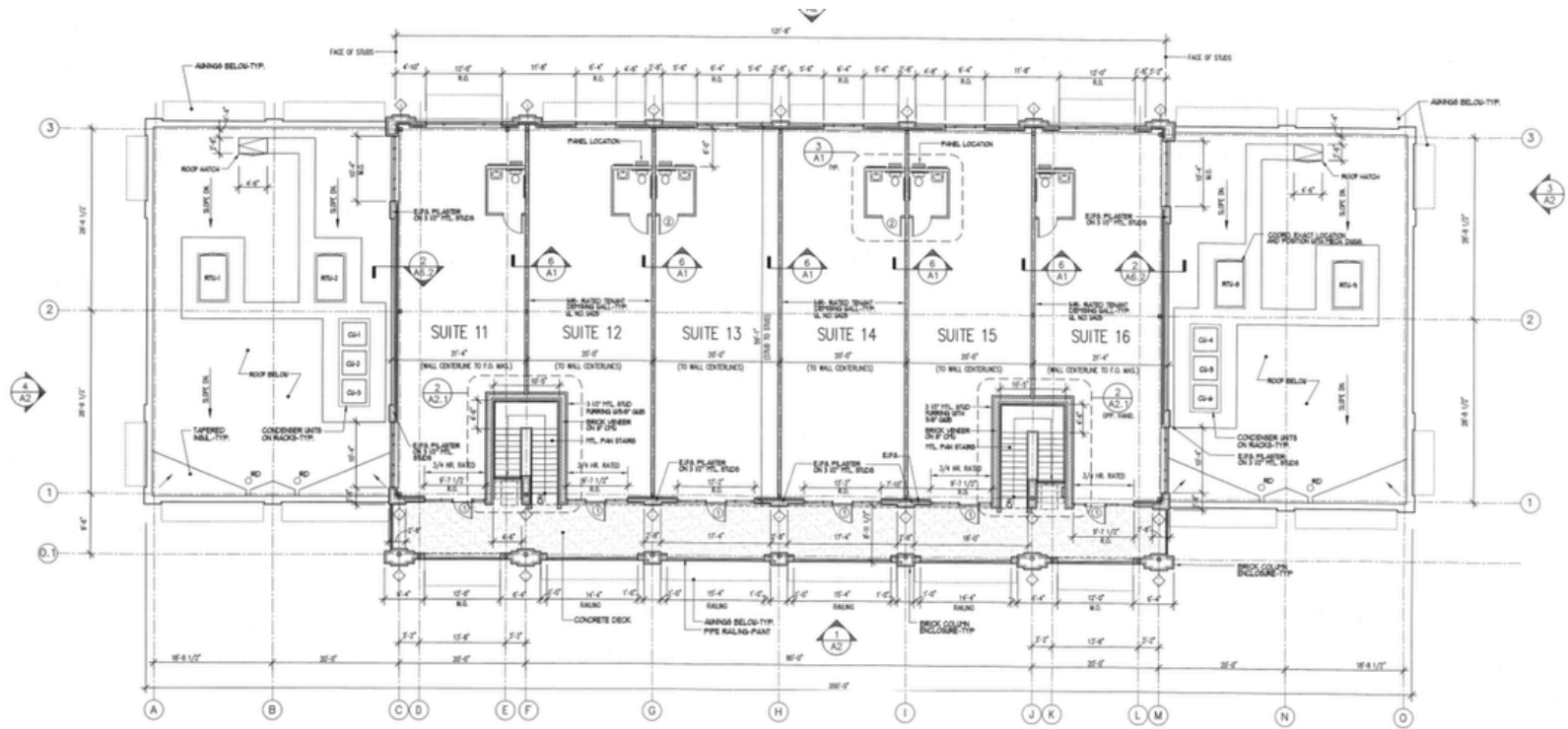
Unit	Size (SF)
101	1,200
106	1,200
107	1,080
202	1,080
203	1,200
206	1,130

Diamondhead

807 Williamson Rd | Mooresville, NC








1
A1
GROUND FLOOR PLAN
LW = 1'-0"



1
A1.3
UPPER FLOOR PLAN
LW = 1'-0"

Demographics

	1 Mile	3 Miles	5 Miles
 Population	5,036	35,908	93,100
 Median Age	42.0	40.6	40.5
 Daytime Population	6,687	44,309	98,191
 Avg. HH Income	\$130,021	\$122,945	\$139,217
 Households	2,250	15,188	36,923

Traffic Count Map

