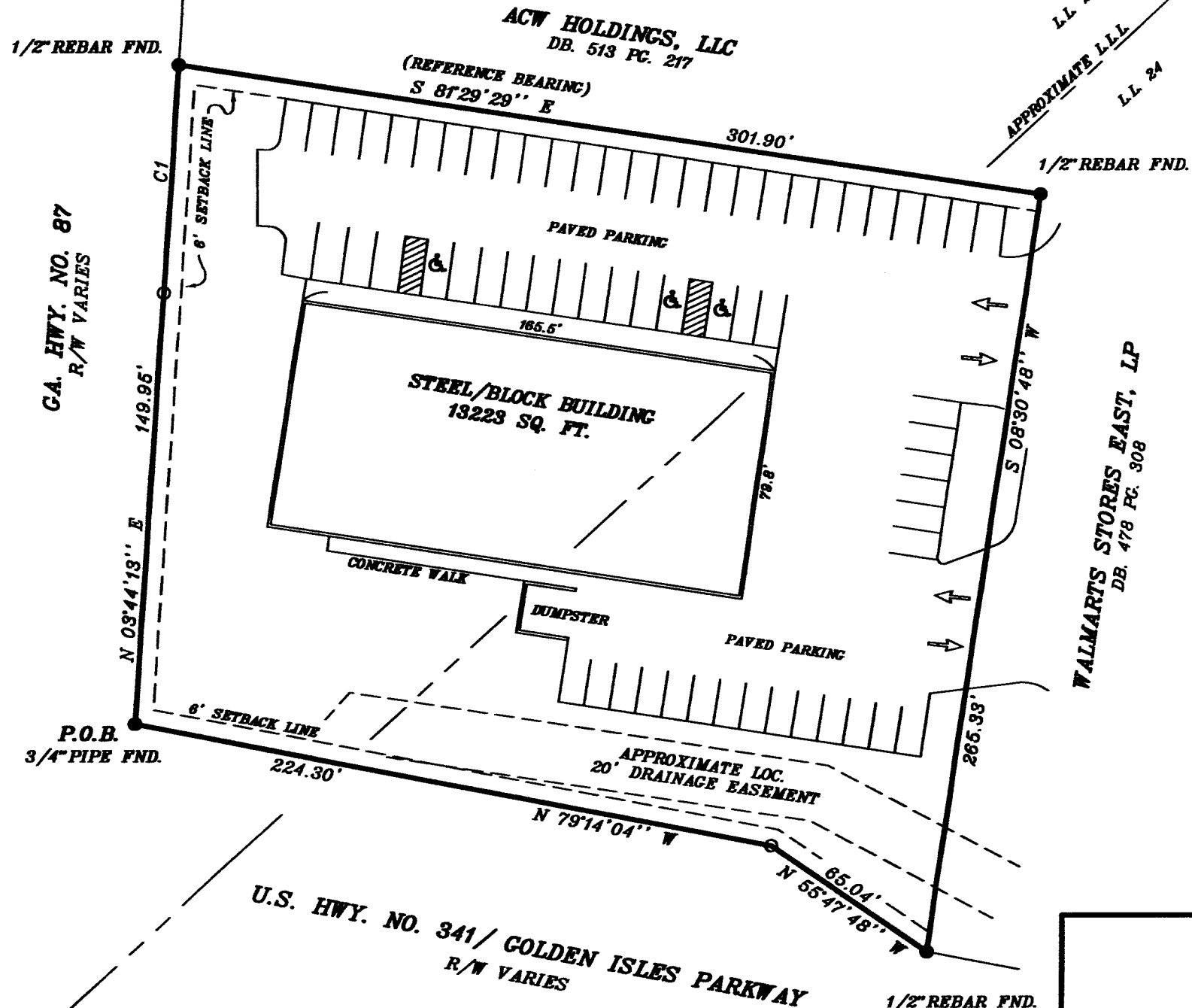
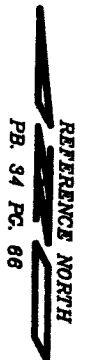


NUMBER	ARC	R =	Ch
C1	N 03°40'34" E	79.15	3769.72 79.15



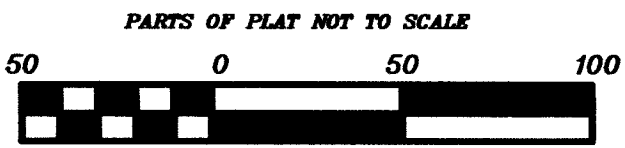
1.58 Acres

- NOTES:
- BUILDING MEASUREMENTS ARE TO EXTERIOR.
 - 64 TOTAL PARKING SPACES
 - 3 HANDICAP PARKING SPACES

THE PROPERTY HEREON LIES COMPLETELY WITHIN A JURISDICTION WHICH DOES NOT REVIEW OR APPROVE ANY PLATS OR THIS TYPE OF PLAT PRIOR TO RECORDING. RECORDATION OF THIS PLAT DOES NOT IMPLY APPROVAL OF ANY LOCAL JURISDICTION, AVAILABILITY OF PERMITS, COMPLIANCE WITH LOCAL REGULATIONS, OR REQUIREMENTS, OR SUITABILITY FOR ANY USE OR PURPOSE OF THE LAND.

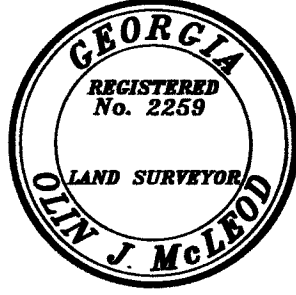
FUTHERMORE, THE UNDERSIGNED LAND SURVEYOR CERTIFIES THAT THIS PLAT COMPLIES WITH THE MINIMUM TECHNICAL STANDARDS FOR PROPERTY SURVEYS IN GEORGIA AS SET FORTH IN THE RULES AND REGULATIONS OF THE GEORGIA BOARD OF REGISTRATION FOR PROFESSIONAL ENGINEERS AND LAND SURVEYORS AND AS SET FORTH IN O.C.G.A. SECTION 15-6-67.

SIGNATURE



LEGEND

- P.O.B. = POINT OF BEGINNING
- R/W = RIGHT OF WAY
- *** = WOOD FENCE



THIS PROPERTY MAY BE SUBJECT TO EASEMENTS, RESTRICTIONS, OR OTHER RIGHTS NOT DISCOVERED OR DEPICTED ON THIS PLAT OF SURVEY.

THE FIELD DATA UPON WHICH THIS PLAT IS BASED, HAS A CLOSURE PRECISION OF ONE FOOT IN 27000 FEET AND AN ANGLE ERROR OF 03" PER ANGLE POINT, AND WAS ADJUSTED USING THE COMPASS RULE METHOD.

THE LINEAR AND ANGULAR MEASUREMENTS OBTAINED USING A NIKON TOTAL STATION.

THIS PLAT HAS A CLOSURE OF 1 FOOT IN 289,000 FEET.

Georgia Land Services

P.O. BOX 402, HAWKINSVILLE GA. 31036
478-230-8586

SURVEY FOR ON LINE, INC. MAY 08, 2019	LOCATED IN LAND LOTS 23, 24 15th DISTRICT CITY OF EASTMAN DODGE COUNTY GEORGIA SCALE: 1 IN. = 50ft. FILE NO. 050319
--	---