

1250 MISSOURI STREET, #102

SAN FRANCISCO, CA

FOR LEASE

COMMERCIAL LOFT

PLEASE CONTACT:

MARK GEDYMIN
415-343-7289
MARK@BEACON-CRE.COM
LIC #: 01397159



BEACON
COMMERCIAL ADVISORS

OPPORTUNITY OVERVIEW

PROPERTY PROFILE

ADDRESS	1250 Missouri Street #102, San Francisco, CA 94107
PREMISES	+/- 1,000 RSF
FLOOR	First
YEAR BUILT	2009
PARKING	1 reserved in garage
ZONING	PDR-2 (Production, Distribution, & Repair) (No residential use)
SUBMARKET	Potrero Hill

Asking: \$2,950.00 PER MONTH, IG

The premises features:

- **Open plan main level bullpen**
- **One (1) conference room in upstairs loft**
- **High ceilings (approximately 15.26')**
- **Updated kitchenette**
- **One (1) above-standard in-suite restroom**
- **Built-in wood-clad cubicles**

The building features:

- **Onsite parking garage, sprinklers, & building elevator**
- **Near Potrero Hill amenities, freeways, Muni 19 Line, & Caltrain 22nd St. station**



PHOTO GALLERY

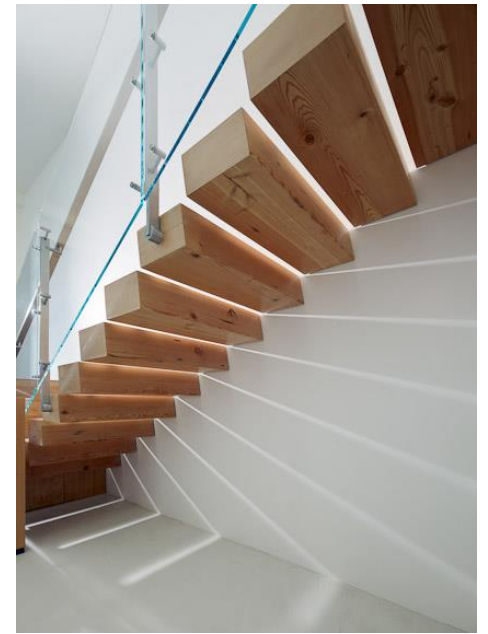


PHOTO GALLERY

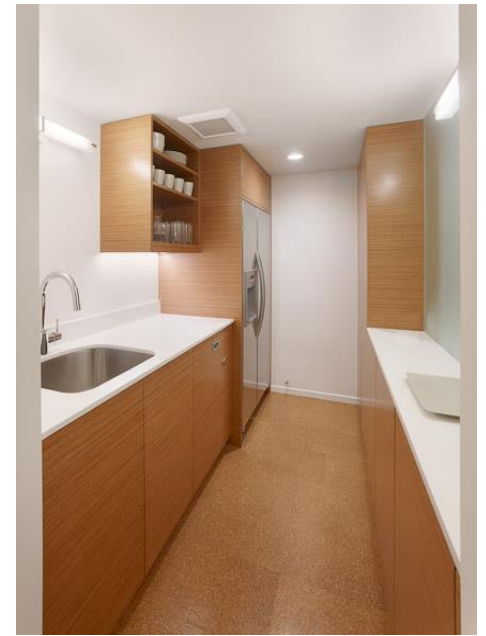
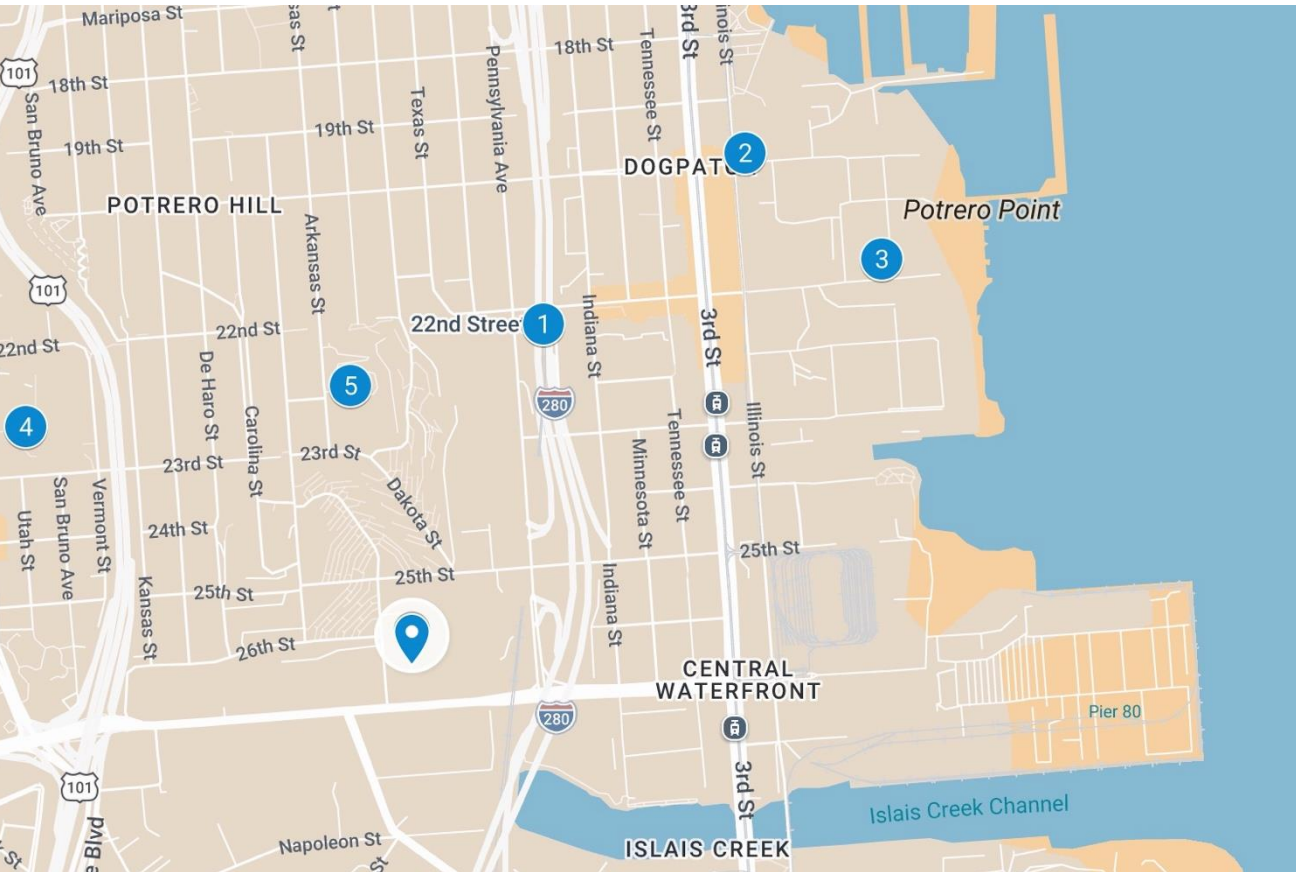


PHOTO GALLERY



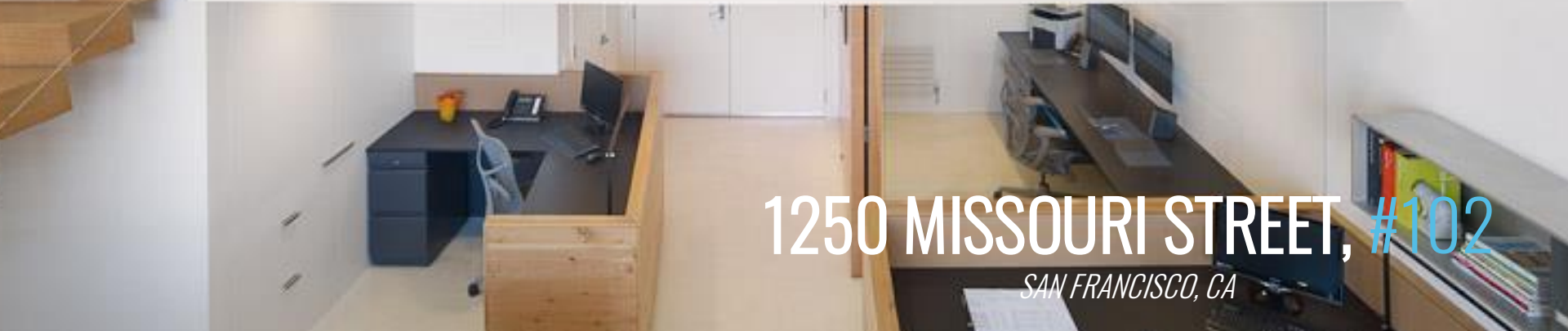
LOCATION OVERVIEW



- 1 22nd Street
- 2 The Palm Court at RH San Fr...
- 3 Standard Deviant Brewing Pi...
- 4 Zuckerberg San Francisco G...
- 5 Potrero Hill Recreation Center



MARK GEDYMIN
415-343-7289
MARK@BEACON-CRE.COM
LIC #: 01397159



1250 MISSOURI STREET, #102
SAN FRANCISCO, CA

The information contained in this document has been obtained from sources deemed reliable; however, no warranty or representation, expressed or implied, is made as to the accuracy of the information. Any projections, opinions, assumptions, or estimates used are for example only and do not represent the current or future performance of the property. The BEACON Commercial Advisors logo is property of BEACON Commercial Advisors. All other marks or logos displayed within this document are the property of their respective owners, and the use of such marks or logos does not imply any affiliation with or endorsement of BEACON Commercial Advisors.