

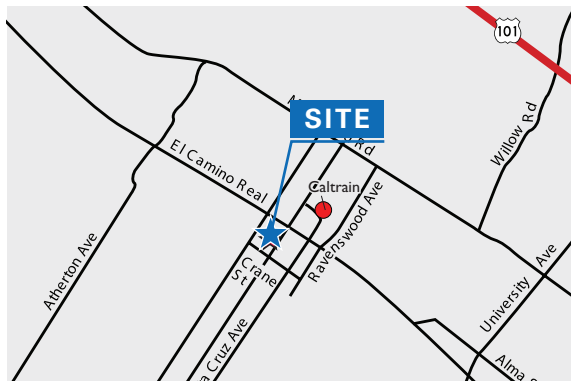


Downtown Menlo Park Office Space

**1143 CRANE STREET
MENLO PARK, CA**

Office Suites:

Suite 203: ±1,297 RSF Available



Property Highlights

Available Now

Short Term/Flexible Term

Located in the Heart of Downtown Menlo Park

High Identity

Walk to Amenities

Elevator Served- Second Floor Suite

Adjacent to City Parking Lot(s)

NEW PRICE: \$4.85 Full Service

For information, please contact:

Cherie Wittry

Senior Managing Director

t 650-688-8523

cherie.wittry@nmrk.com

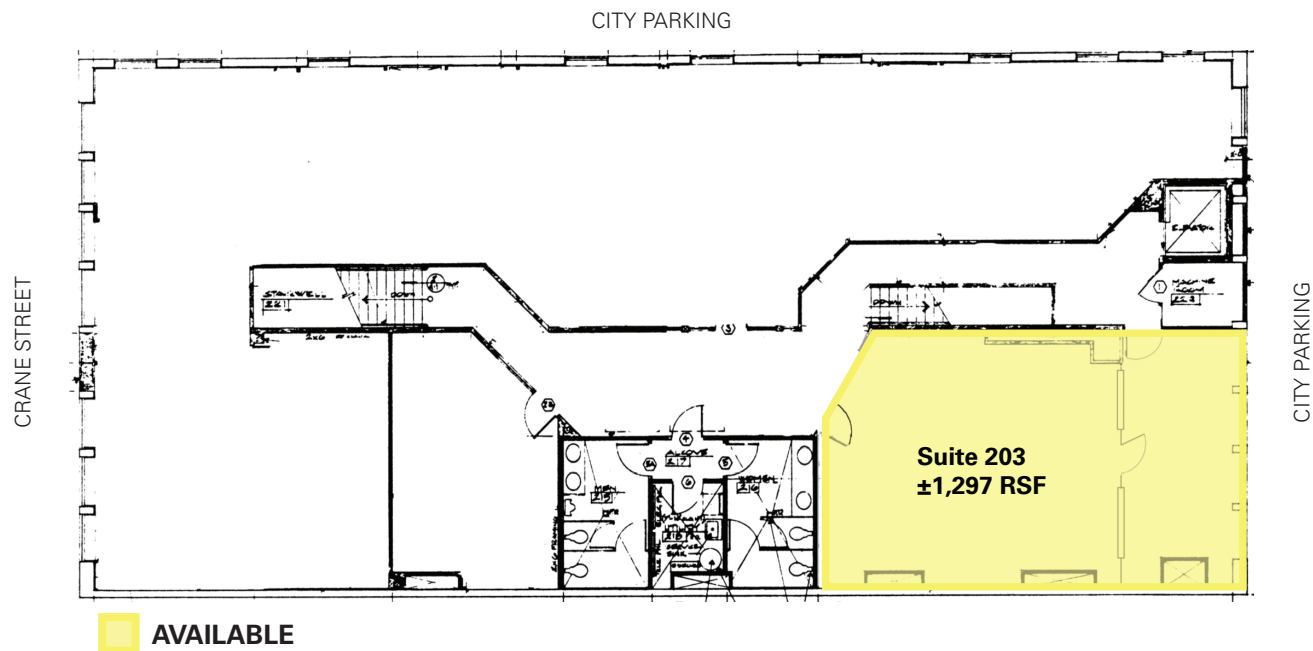
CA RE License #00863251

nmrk.com

NEWMARK

The distributor of this communication is performing acts for which a real estate license is required. The information contained herein has been obtained from sources deemed reliable but has not been verified and no guarantee, warranty or representation, either express or implied, is made with respect to such information. Terms of sale or lease and availability are subject to change or withdrawal without notice. 21-0392.10/25

1143 CRANE STREET
MENLO PARK, CA



For information, please contact:

Cherie Wittry

Senior Managing Director

t 650-688-8523

cherie.wittry@nrmk.com

CA RE License #00863251

nrmk.com

NEWMARK